

Appendix D

Information from Final Public Meeting

Northland Power

Welcomes You to the Final Public Meeting

*for the Abitibi Solar Project,
Empire Solar Project, and
Martin's Meadows Solar Project and
associated 115 kV Transmission Line*

Tuesday, August 21, 2012

7:30 pm - 9:30 pm

Tim Horton's Events Centre, 7 Tim Horton Drive
Cochrane, ON

Purpose of this Public Meeting

A public meeting to communicate project details and to solicit stakeholder input is an important aspect of the Renewable Energy Approval (REA) process and project planning.

This public meeting provides an opportunity to:

- Ask questions about the proposed Projects and the REA Project Documents
- Obtain more information about Northland Power
- Gain a greater understanding of the REA process
- Provide any further issues or concerns regarding the proposed Projects

How can I provide comments or concerns?

A number of methods are available for providing comments or concerns. You can:

- Fill out a comment form provided at this public meeting. This form can also be used to register your name and mailing address so you are included on the Projects mailing list.
- Discuss your comments or concerns with one of the representatives of Northland Power or Hatch present at this public meeting.
- Contact the Environmental Coordinator for the Project via the following information:

Sean Male, MSc
Environmental Coordinator
Hatch Ltd.

Address: 4342 Queen Street, Suite 500
Niagara Falls, Ontario, L2E 7J7

Phone: 905-374-0701 Ext 5280

Fax: 905-374-1157

Email: smale@hatch.ca

For more information please visit:

www.northlandpower.ca

Northland Power

Northland Power develops and operates clean and green power generation facilities, mainly in the provinces of Ontario and Quebec, with Saskatchewan being added to that list shortly. Our facilities produce about 870 MW of electricity. Northland Power has been in business since 1987 and has been publicly traded since 1997.

Sustainability is a core value at Northland Power. All of our development efforts and operational practices focus on providing long term benefits to our customers, investors, employees, communities and partners.

For Northland Power, sustainability has many dimensions:

Environmental: Northland Power was founded on the belief that clean and green energy sources are vital to the future of our planet. Our construction and operational practices are engineered to meet the highest environmental standards, even in jurisdictions where lower standards are legislated.

Community: Northland Power takes an active interest in its host communities to ensure they remain vibrant, healthy places to live.

Operational: Northland Power maintains and reinvests in their operating assets to achieve maximum efficiency and economic life.

Health and Safety: Ensuring that our staff has the knowledge, tools and time to work safely is Northland's first priority. Our culture of safety, respect and independence helps to ensure we attract and retain the people that we need to perform.

Financial: Northland Power consistently chooses long term success over short term gain. Northland Power only pursues projects that meet strict return thresholds and have creditworthy customers. As a result, we have paid stable monthly dividends since 1997.

HATCH™

Northland Power has retained Hatch Ltd. to undertake the Renewable Energy Approval (REA) process, subject to the provisions of the Environmental Protection Act Part V.0.1 and Ontario Regulation 359/09. Hatch is an Ontario-based consulting, engineering and management company with operations worldwide and a reputation for excellence acquired over 80 years of continuous service to its clients. Hatch will undertake the REA process from its Niagara Falls, Ontario office.

Solar Technology

A solar photovoltaic (PV) module (or panel, as they are often called) transforms the sun's energy into electrical energy. Silicon, a semi-conductor, is the material that transforms a ray of sunshine into electricity. The silicon is located within a grid (commonly made of metal) that conducts electricity. When the sunlight hits the silicon, electrons flow from the silicon into the grid, thereby producing electricity. The silicon and metallic grid are located beneath a layer of glass to provide weather protection. The glass has a special coating applied to maximize the capture of sunlight by the panel, thereby reducing glare.

Advantages of Solar Energy

Solar power has a multitude of advantages compared to most other power generation technologies.

- First and foremost, the fuel is free. As the cost of many fossil fuels is expected to increase in the future, having solar energy on the grid at a set price will give greater stability to future energy prices.
- Another key benefit is the absence of any green house gas emissions and other pollutants. This ensures that the local community will not have to live with poor air quality or noxious odours.
- Solar PV systems are comprised of safe, common materials that will not affect the lands on which they are located, allowing for easy remediation upon decommissioning.
- Most solar PV systems have no moving parts, unlike almost all other power generation technologies. Having no moving parts reduces the environmental impact, maintenance costs, and noise levels of this type of power generation.
- There is a natural supply/demand match that is inherent to solar power, as the sun rises and sets in parallel with society's general daily electricity demand pattern. This helps mitigate the need for the development of other technologies that traditionally meet peak electricity demand.



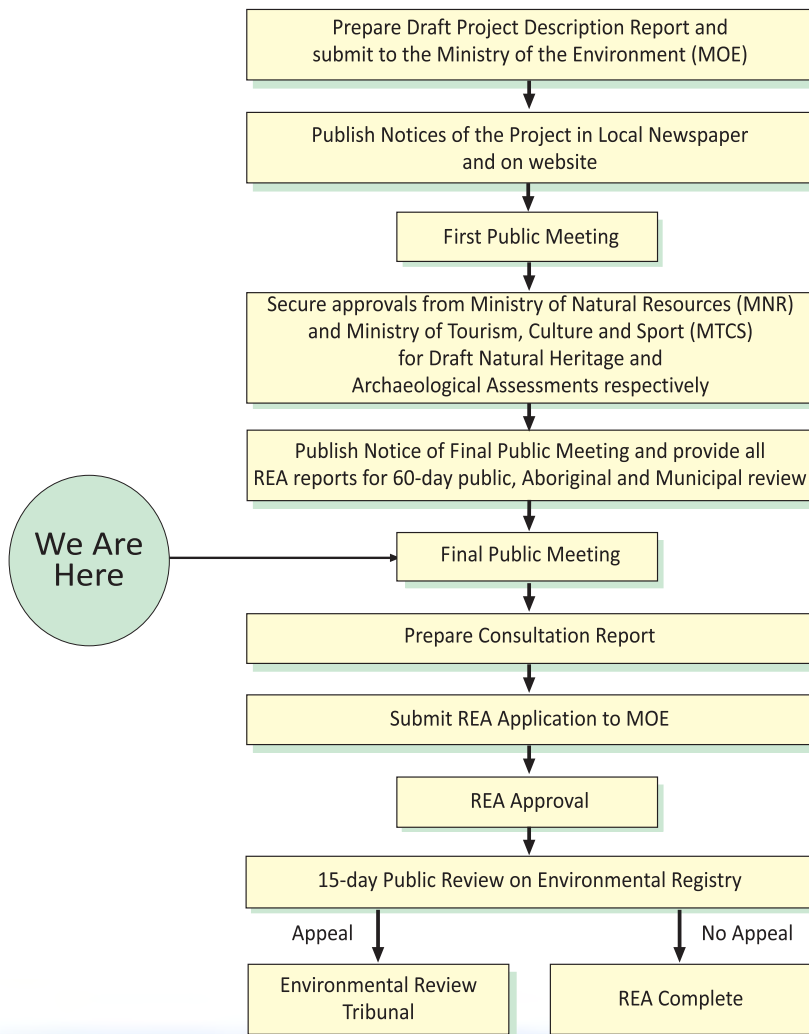
Ontario's Feed-in-Tariff (FIT) program was launched by the Ontario Power Authority on October 1, 2009 to encourage the development of renewable energy resources and to stimulate growth in green technology and renewable power industries.

The Ontario Power Authority awarded 184 FIT contracts to renewable power developers in Ontario on April 8, 2010. Northland Power was awarded a total of 13 contracts for proposed solar ground-mount developments throughout the province. These projects are currently proceeding through the REA process.

Renewable Energy Approval Process

The proposed Projects are subject to the Renewable Energy Approval (REA) process, and the provisions of Part V.0.1 of the Environmental Protection Act and Ontario Regulation 359/09. The REA process entails consideration of environmental aspects, including natural heritage features and water bodies, as well as heritage and archaeological resources. In addition, the REA process includes public, government agency and First Nation consultation.

The main components of the REA process are shown in the flow diagram.



Abitibi, Empire, Martin's Meadows Solar Projects

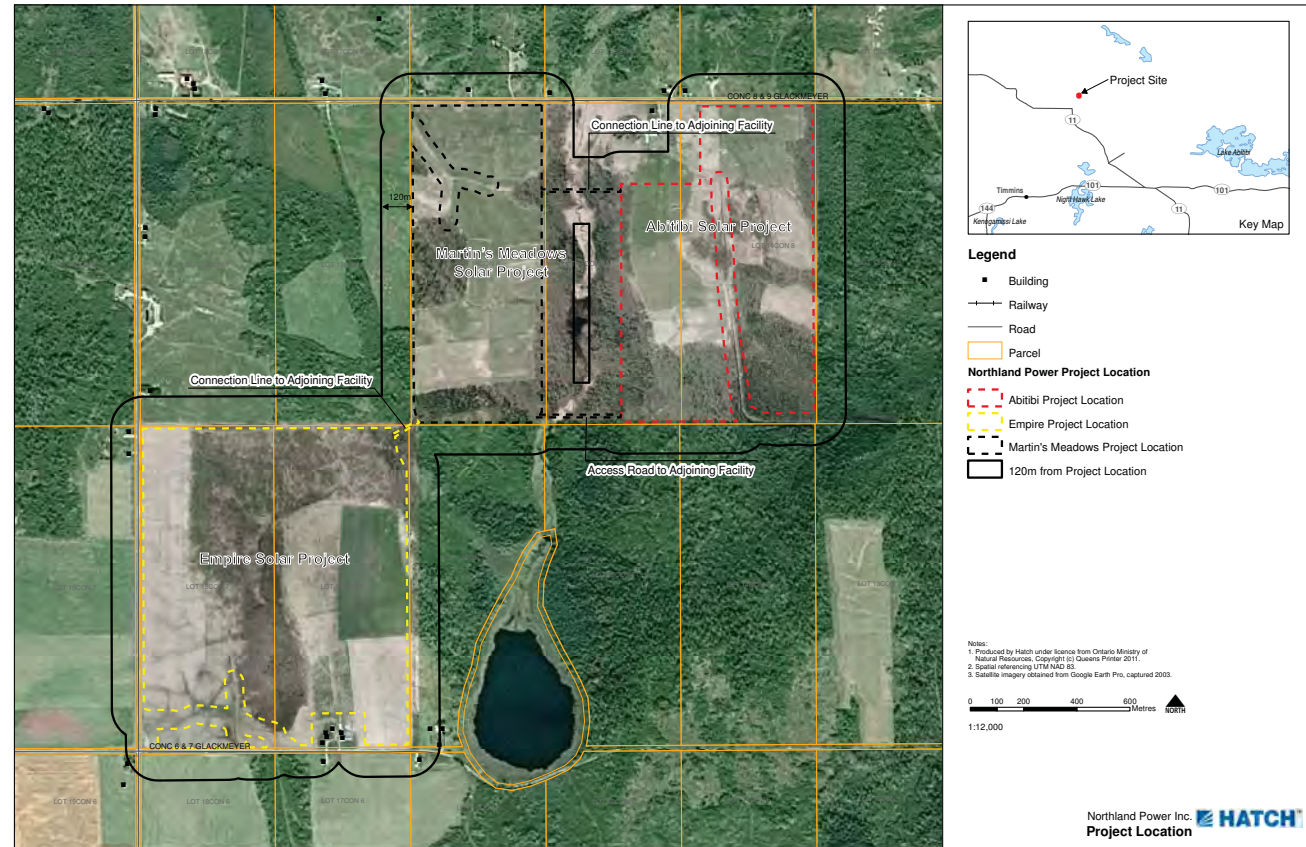
Project Location

Abitibi Solar Project and Martin's Meadows Solar Project are both located south of Concession 8 and 9 Glackmeyer. Empire Solar Project is located north of Concession 6 and 7 Glackmeyer. The proposed Projects, if approved, will be constructed on privately owned lands.

Project Description

The proposed Abitibi, Empire, Martin's Meadows Solar Projects are considered to be Class 3 solar facilities, as defined under the Environmental Protection Act (Act) Part V.0.1 and Ontario Regulation 359/09. Class 3 solar facilities are defined as having a name plate capacity of 10 kilowatts (kW) or greater and the solar panels are mounted on the ground. Specifically, these proposed Projects have nameplate capacities of 10 MW (ac).

The proposed Projects will use crystalline technology photovoltaic (PV) panels installed on ground-mounted rack structures made of steel and aluminum. The project will consist of approximately 50,000 panels and will be designed to optimize energy production.



Project Schedule – Abitibi, Empire, Martin's Meadows Solar Projects

FIT Application – November 2009
Submission of Project Description to MOE – March 2011
FIT Contract Award – April 2010
First Public Meeting – July 2011
Final Public Meeting – August 2012
REA Application Submission – September 2012
REA Received – February 2013
Start of Construction – Early 2013
Commercial Operation Date – Fall 2013

For more information regarding these Projects please visit the Project website at: northlandpower.ca

Construction

Construction of the proposed Project is anticipated to start following the appropriate approvals, in 2013. The construction take approximately 6-9 months and will consist of:

- *Site Preparation*
- *Construction and Installation of the Facility*
- *Testing and Commissioning*
- *Site Restoration*

Each day construction will normally begin at 7:00 am and end at 5:00 pm. If a longer construction day becomes required, the Project will follow local requirements and minimize impacts to the local community.

Site preparation refers to activities such as:

- Surveying/staking, site clearing and grubbing (where required)
- Construction of access roads and drainage systems
- Installation of fencing, and construction of a laydown area

It is anticipated that these activities will require several months to complete

Construction and installation of the facility includes:

- Pouring of the concrete foundations for electrical equipment
- Installation of electrical equipment such as inverters and transformers, interconnection cable trenching
- Installation of PV panel supports and the racking systems
- Placement of PV panels

Testing and commissioning will be performed prior to start-up and connection to the power grid. Solar modules, inverters, collection system, and substation will be checked for system continuity, reliability, and performance standards.

Site restoration following construction the main objective will be to (i) establish ground cover and drainage within the solar panel footprint and (ii) re-instate temporarily disturbed areas to stable conditions. All construction material, equipment, temporary facilities, and waste will be removed from the site. Revegetation will include planting of native plants and hydro-seeding where required.

Operation

Following construction, the operations phase is expected to commence in Fall of 2013. Operations will consist of routine maintenance inspections and general up keep of the Project (e.g., panel cleaning and mowing). Otherwise, no on-site staff will be required.

Visual inspections of the transformers and erosion and sedimentation control measures are to occur monthly. Panel cleaning may or may not be required, depending on weather conditions, and if required, any water used will be brought to the site. No chemicals will be used for cleaning.

Vegetation, including underneath the panels, will be selected to minimize maintenance activities (e.g., mowing) and to provide ground cover to both protect and enhance the soil and to provide wildlife habitat. Presently, a mix of low growing, weed-resistant turf type fescues is proposed. Herbicides will not be used to control vegetation growth during operations.

Site security will consist of fencing and limited lighting near the entrance of the facility. Fencing will consist of a 2 meter high wire fence, with barb wire along the top of the fence.

For more information, please refer to the Project's *Design and Operation Report*



Decommissioning

It is anticipated that the Project will have a useful life of at least 20 years, the length of the existing FIT contract, which can be extended with proper maintenance, component replacement and repowering. Decommissioning will occur at the end of the useful life and consist of:

- *Equipment dismantling and removal*
- *Site restoration*

Equipment dismantling and removal will include the PV modules, electrical equipment, access roads and foundations as well as any other facility equipment. Equipment and material may be salvaged for resale, scrap value or disposal, depending on market conditions.

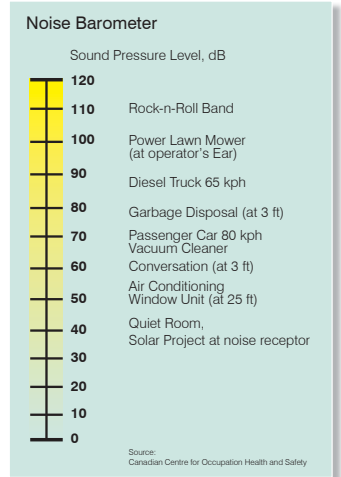
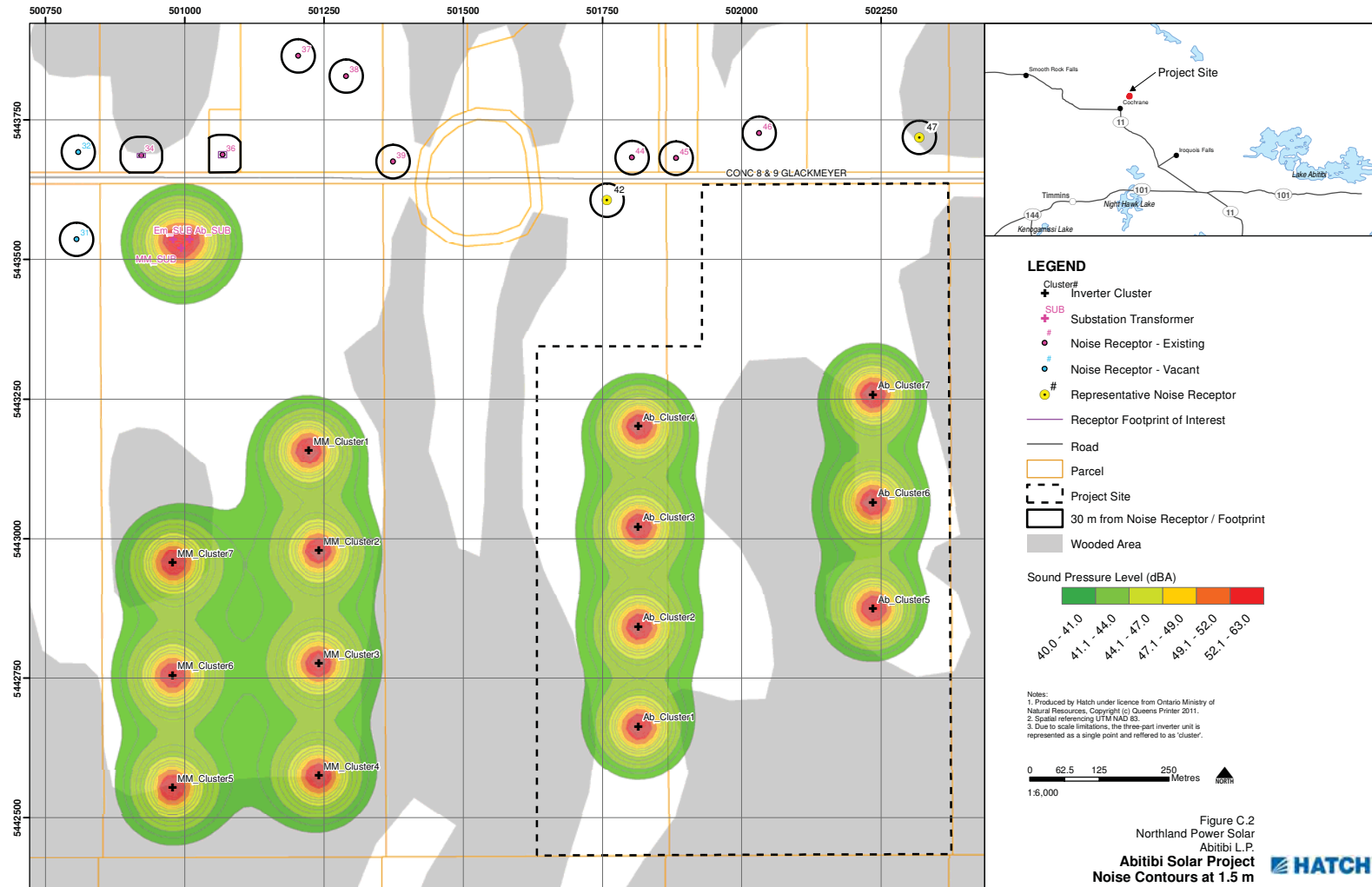
Site restoration will consist of the following, subject to environmental requirements and the wishes of the landowner:

- Any damage to existing tile drainage system, if applicable, will be repaired/restored
- Any excavation and/or trench will be backfilled and graded to existing contours
- Should the subsoil be negatively affected and compromise the future productive use of the land, the following will be implemented: first the topsoil will be removed and stockpiled; then the subsoil may be ripped and tilled prior to grading it; topsoil will then be replaced and revegetated
- Should the soil be negatively affected and compromise the future productive use of the land, nutrients may be added or fertilizers deployed
- Topsoil and compost will be blended where required, spread and replaced to original depth
- Hydroseeding with approved seed mixture and mulching during the appropriate seasonal conditions

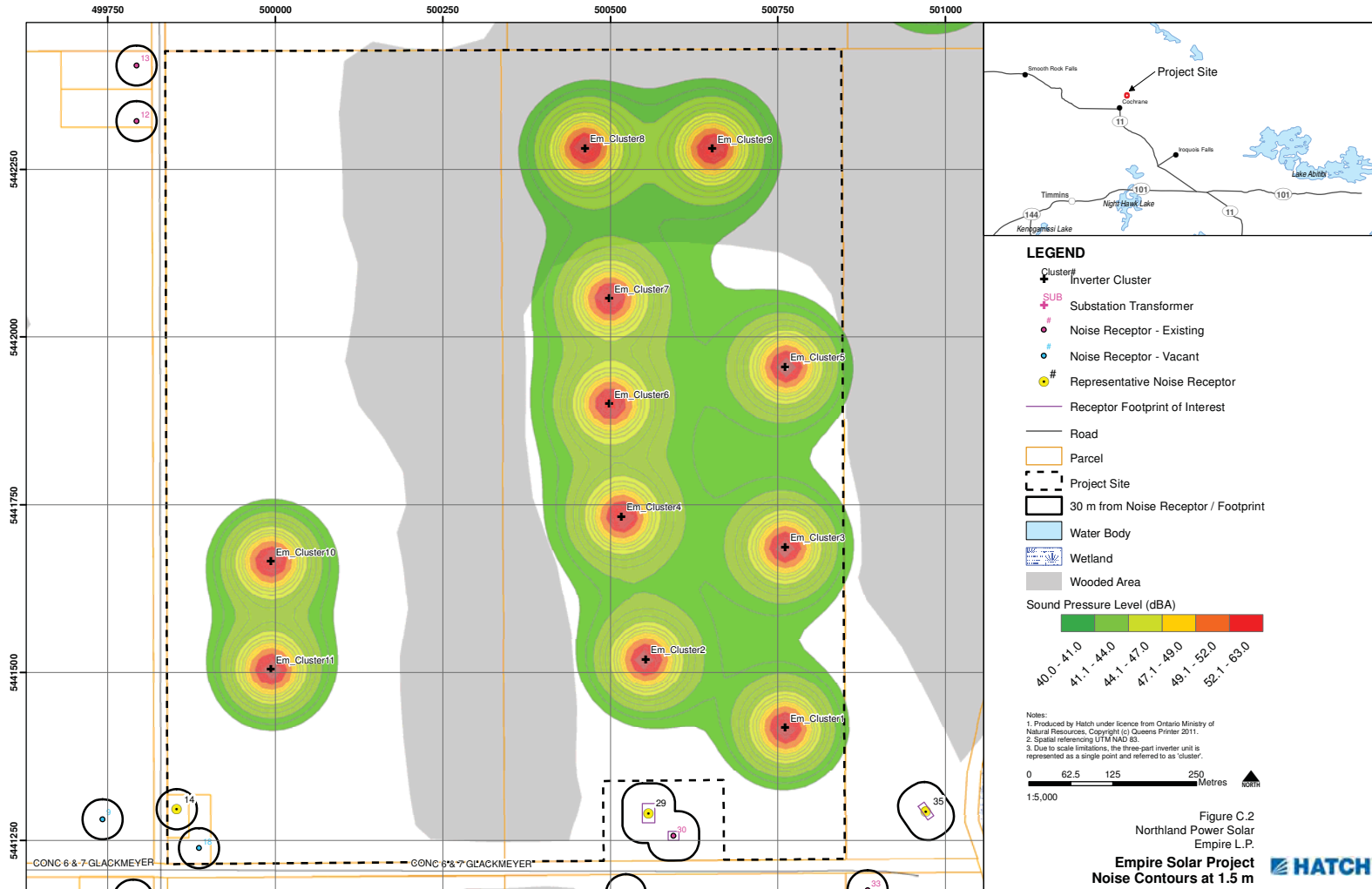
For more information, please refer to the Project's *Decommissioning Plan Report*



Noise - Abitibi Solar Project

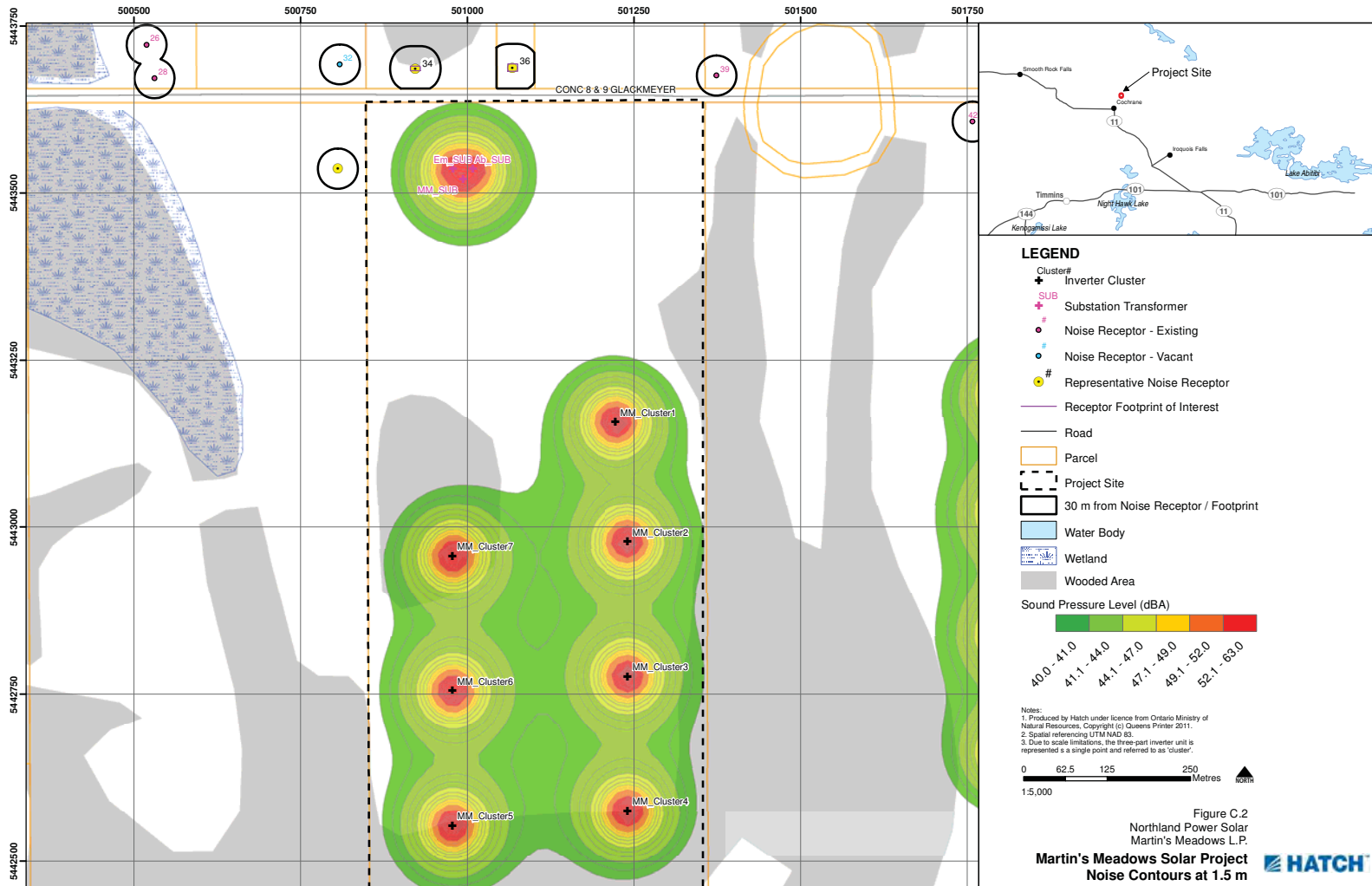


Noise - Empire Solar Project



Path: P:\NORTHLAND\333751\DATABASES\334844\GIS\Empire\Empire_Noise_C2_Contour_1_5m.mxd Date Saved: 8/15/2012 3:22:34 PM

Noise - Martin's Meadows Solar Project



Path: P:\NORTHLAND\333751\DATABASES\334844\GIS\MartinM\MartinM_Noise_C2_Contour_1_5m.mxd Date Saved: 8/15/2012 8:43:12 AM

Abitibi, Empire, Martin's Meadows Solar Projects

Natural Heritage Assessment for Solar Panel Locations

Abitibi Solar Project

- Project location is composed of mainly agricultural fields with occurrences of provincially significant wetlands communities on and within 120 m.
- Significant wildlife habitat for waterfowl nesting habitat and wetlands providing amphibian breeding habitat are located on and within 120 m.
- Significant animal movement corridor is associated with Monroe Creek and its riparian habitat.

Empire Solar Project

- Project location is composed of mainly agricultural fields with occurrences of significant wetlands and woodlands located on and within 120 m.
- Provincially significant wetland complex has been identified on and within 120 m of the Project location, which extends for several hundred metres from the Project location.

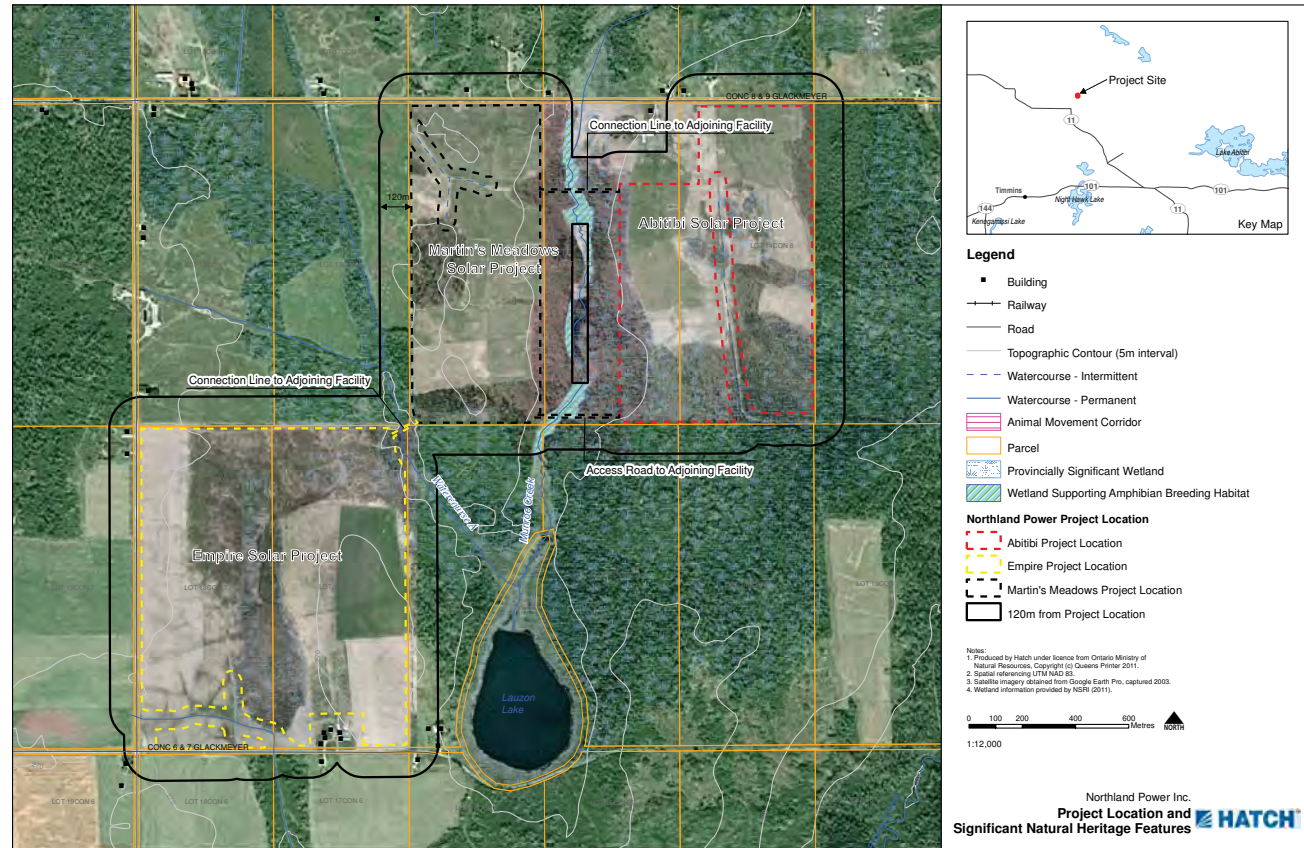
Martin's Meadow's Solar Project

- Project location is composed of mainly agricultural fields with occurrences of provincially significant wetlands and woodlands located on and within 120 m.
- Significant wildlife habitat providing amphibian breeding habitat are located around Monroe Creek.
- Animal movement corridor associated with the creek and riparian habitat.

Mitigation Measures for Natural Heritage Features

- Avoidance of encroachment, and provision of setbacks, from many of the significant features.
- Demarcation of work areas to prevent encroachment beyond designated sites.
- Construction outside of bird breeding season, where possible.
- Visual search following completion of fence for trapped animals.
- Visual monitoring of work areas, equipment and access roads prior to start of each work day to search for wildlife species.

There will be no change to the existing environment outside of the Project location.



Abitibi, Empire, Martin's Meadows Solar Projects

Water Body Assessment for Solar Panel Locations

Abitibi Solar Project

- Munroe Creek is a permanent water body located within 120 m west of the Project that flows through wetland communities (i.e., narrow leaved emergent marsh, tall shrub swamp) and woodlands dominated by trembling aspen, black spruce and balsam fir.
- Watercourse A is both an intermittent (for the initial 100 m) and permanent stream that originates in an agricultural field on the north-central portion of the Project.

Empire Solar Project

- An unnamed water body originates in the open field approximately 30 m west of the Project and flows in an easterly direction.
- A tributary of Monroe Creek originates to the north of the Project location in an agricultural field and drains through a wooded area in the northeast corner of the property, before draining into Lauzon Lake, approximately 350 m east of the Project.

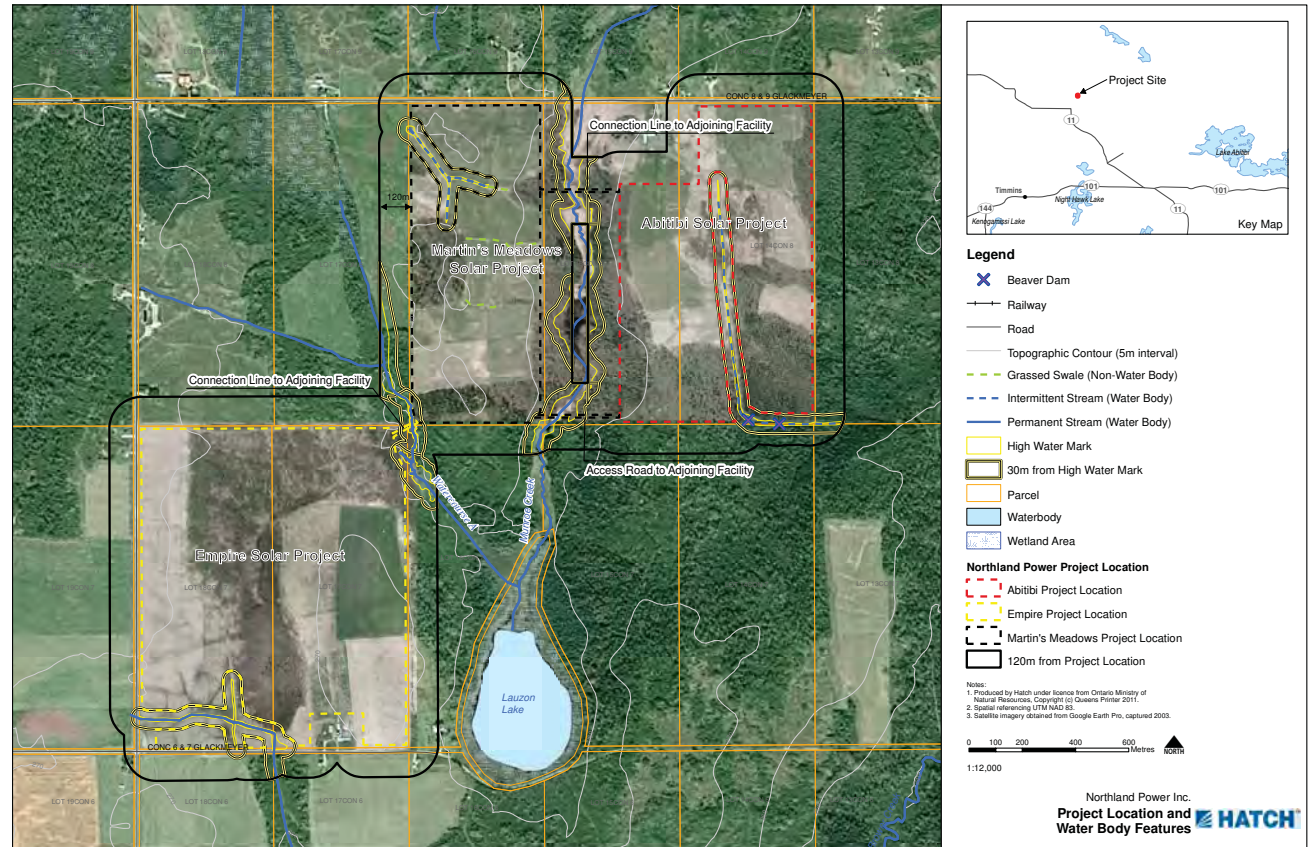
Martin's Meadow's Solar Project

- Munroe Creek is a permanent stream located in a relatively wide, low lying valley, with abundant wetland vegetation, surrounding by wooded areas adjacent to the agricultural fields east of the Project.
- An intermittent tributary of Munroe Creek passes within 30 m of the southwest corner of the Project.

Mitigation Measures for Natural Heritage Features

- Sediment and erosion controls (e.g., silt fencing, site stabilization and construction phasing).
- Stormwater management plans (e.g., site re-vegetation, enhanced vegetated swales).
- Spill prevention and response measures (e.g., handling protocols, secured storage areas, clean up materials on hand).
- Dust control measures (e.g., watering of access roads, tarping of stock piles).

There will be no change to the existing environment outside of the Project location.



115kV Transmission Line

In order to connect the Abitibi, Empire and Martin's Meadows Solar proposed Projects to the existing Hydro One transmission system circuit (C2H), Northland will construct an approximately 22 km 115 kV single-circuit transmission line. The line will run from the three step up transformers located on the Martin's Meadows Project location to the connection point located near the intersection of Highway 688 and Clute Concession 8 & 9 that is located north of Hunta. In addition, there will be an approximately 800 metre section of 115 kV line to connect the Long Lake Solar Project to tie in this project.

Additional information on the transmission line is provided below:

- There will be a small switch station (approximately 75m x 75 m) on either privately owned or Crown (MNR) land at the connection point
- The line will be above ground, except where it crosses the existing Hydro One and H2O transmission lines, where it will be buried underground
- The 115 kV transmission line will be supported through either single or double poles.
- The transmission will be largely contained within municipal road rights-of-way, but some private property will be crossed. Northland may approach some private landowners for small easements for guy wires.
- The transmission line will also cross the Ontario Northland Railway (ONR), an existing Algonquin Power transmission line, and several watercourses including the Frederick House River.

Northland is also permitting the transmission line through parallel process with the Ontario Energy Board (such as "Leave to Construct") and Ministry of Natural Resources (such as land use permits, easements, and work permits under the Public Lands Act; a Forest Resource License will be required for removal of trees from Crown Land, if needed).



Next Steps

- Following the completion of this Final Public Meeting, all comments and concerns will be incorporated into the REA Project Documents and the Project proposals. Then a submission to the Ministry of the Environment will be made to obtain a Renewable Energy Approval.
- Following the acceptance of the REA submission, the Ministry of the Environment will post on the Environmental Registry; (<http://www.ebr.gov.on.ca/ERS-WEB-External/>) a proposal notice for public comment and review. Comments can then be submitted directly to the Ministry of the Environment.
- Lastly, the Ministry of the Environment provides a decision notice of the Projects. If no appeals are received, the Project can move forward with construction, pending any further required approvals.



**Thank you for attending this
Final Public Meeting**

*Your opinion is
important to us*

**Please Fill Out A
Comment Form**

Please Sign In

(PLEASE USE BLOCK LETTERS)

Northland Power – Final Public Meeting

Project: Abitibi, Empire and Martin's Meadows Solar Projects and Associated 115 kV Transmission Line

Date: August 21, 2012

Name	Complete Mailing Address			Phone (Please include area code)
	Street	City	Postal Code	
Jennifer Telford				272-7130
CLAUDE THOMAS				272-5854
DON JACQUES				272-5788
Noah Thomas				272-5854
Joe Hooberwoud				272-5691
CHAD COTE				272-5159
ADRIAN STRUYK				272-5672
MARGARET STRUYK				"
Cathy Shein		Hunts		335-3257
Elaine Shein		^		272-6312
RICHARD KENDRICK		Hunts		272-2989

* Please note that all information provided on this form will become part of the formal record and will be published in Project reports that will be available for public review

Please Sign In

(PLEASE USE BLOCK LETTERS)

Northland Power – Final Public Meeting

Project: Abitibi, Empire and Martin's Meadows Solar Projects and Associated 115 kV Transmission Line

Date: August 21, 2012

Name	Complete Mailing Address			Phone (Please include area code)
	Street	City	Postal Code	
Joanne Mayer		Huntsville	POL 1P0	272-4597
Liz Mayer	lot 8 Lower Deception Lake		P.O. Box 2511 Cochrane	272-4597
Don & Lenore	lot 2 x D ^{Cable} Turp	Huntsville	POL-1P0	705 272 6306
Benoit L. CARRIER	376 Linc-657	Cochrane	POL 1C0	705-272-7305

* Please note that all information provided on this form will become part of the formal record and will be published in Project reports that will be available for public review

Comment Sheet

Final Public Meeting: Tuesday, August 21, 2012 Northland Power – Long Lake Solar Project and 115kV Transmission Line

1. Please indicate whether your interest is pertinent to one or both of the proposed Project(s) by circling one or both of the following:

Long Lake Solar Project

115kV Transmission Line

2. Please describe where you reside in relation to the Project location(s)? _____

I have a cottage on Lower
Deception Lake

3. Please provide any relevant information related to the Project location(s) which, in your opinion, should be considered in assessing the potential effects of the Project(s)?

- Why was the Algonquin Transmission Line not considered even if right of way needed to be extended.

- Why was there a change in location of the transmission line after the first public meeting.

- ~~B~~ We require another public meeting to address all of the concerns surrounding the location of the transmission line → WE Demand a 2nd meeting if explanation

A petition was presented to Rob Miller indicating the displeasure of residents of the location of the transmission line → needs to be addressed

Continued on back →

4. Please provide any comments, questions or concerns related to the Project(s).

→ Our properties are going to be
devalued

→ Other options need to be considered
→ This will affect wildlife,
our way of life & definitely
affect the ecosystem

If you would you like to be included on the Project mailing list, please provide your name and full mailing address below:

Name:

Cathy Shier

Mailing Address (including your postal code):

6 Centennial Court Apt. 202

KAPUSKASING, ONT. P5N 3C9

WE WELCOME YOUR INPUT. PLEASE COMPLETE AND SUBMIT THIS COMMENT SHEET BEFORE LEAVING - THANK YOU

Alternatively, if you prefer to mail/fax your response:

Sean Male, Environmental Coordinator

4342 Queen St, Suite 500, Niagara Falls, Ontario, L2E 7J7

Phone: 905-374-5200 Fax: 905-374-1157

For more information regarding the Projects please refer to northlandpower.ca

*** Please note that all information provided on this form will become part of the formal record and will be published in Project reports that will be available for public review**

Comment Sheet

Final Public Meeting: Tuesday, August 21, 2012

Northland Power –Abitibi, Empire and Martin's Meadows Solar Projects
and associated 115kV Transmission Line

1. Please indicate whether your interest is pertinent to one or both of the proposed Project(s) by circling one or both of the following:

Abitibi

Empire

Martin's Meadows

115kV Transmission Line

2. Please describe where you reside in relation to the Project location(s)?

Lot 8, Poplar Ridge Rd.
Munton

3. Please provide any relevant information related to the Project location(s) which, in your opinion, should be considered in assessing the potential effects of the Project(s)?

Considering that the first location of the transmission line was discussed & subsequently squashed at the first public meeting – this should not be considered the second meeting. A high voltage power line should not be through a cottage lot development area where it would affect many people – consider alternative routes (Algonquin Line or other proposal of going down conc. 6V7.

Continued on back

* See petition presented to Rob Miller *

4. Please provide any comments, questions or concerns related to the Project(s).

- would like concerns - despite
X. Martin's sarcastic comments
about this => ??? conflict of interest
- health concerns of high voltage ^{being at} meetings
both in power lines & power @
substation in Huaya with people
living in close proximity
- concerns that for the profit of
a few, property devaluation for
all others affected.

If you would you like to be included on the Project mailing list, please provide your name and full mailing address below:

Name:

Jeanne Mayer

Mailing Address (including your postal code):

PO Box 2511

Cochrane, ON POLICO

WE WELCOME YOUR INPUT. PLEASE COMPLETE AND SUBMIT THIS COMMENT SHEET BEFORE LEAVING - THANK YOU

Alternatively, if you prefer to mail/fax your response:

Sean Male, Environmental Coordinator

4342 Queen St, Suite 500, Niagara Falls, Ontario, L2E 7J7

Phone: 905-374-5200 Fax: 905-374-1157

For more information regarding the Projects please refer to northlandpower.ca

* Please note that all information provided on this form will become part of the formal record and will be published in Project reports that will be available for public review

Comment Sheet

Final Public Meeting: Tuesday, August 21, 2012

Northland Power –Abitibi, Empire and Martin’s Meadows Solar Projects
and associated 115kV Transmission Line

1. Please indicate whether your interest is pertinent to one or both of the proposed Project(s) by circling one or both of the following:

Abitibi

Empire

Martin’s Meadows

115kV Transmission Line

2. Please describe where you reside in relation to the Project location(s)?

Chute Con 8 Lot 8 South side of
Proposed line (792 Malherbe RD)

3. Please provide any relevant information related to the Project location(s) which, in your opinion, should be considered in assessing the potential effects of the Project(s)?

Would like to see topo survey as it
relates to trans line immediately east of
Fredrick House River. Also how ~~is~~
transmission line going to affect my
Present service from transformer to my
home it is presently overhead?

Continued on back



Comment Sheet

Final Public Meeting: Tuesday, August 21, 2012

Northland Power –Abitibi, Empire and Martin's Meadows Solar Projects
and associated 115kV Transmission Line

1. Please indicate whether your interest is pertinent to one or both of the proposed Project(s) by circling one or both of the following:

Abitibi

Empire

Martin's Meadows

115kV Transmission Line

2. Please describe where you reside in relation to the Project location(s)? _____

Concession 9 Huntla

3. Please provide any relevant information related to the Project location(s) which, in your opinion, should be considered in assessing the potential effects of the Project(s)?

my first notification is not (final)
I demand a second meeting with options
As an land owner under the power
line, I have 3 children that I
do not want standing under the power
line to ~~wait~~ wait for the bus as
well as grow up & under. It is a
proven fact power lines with high
voltage cause cancer - why should
my children be exposed to this

Continued on back



4. Please provide any comments, questions or concerns related to the Project(s).

being misinformed
poor presentation about the project
2nd meeting ~~with~~ was in Cochrane with
no meeting or presentation about the project
- ~~I~~ I was told by a vested land owner
and one of your employees to speak
to my husband (as if I don't have
an opinion).
only given one letter in the mail as a
land owner and we are @ the final meeting

If you would you like to be included on the Project mailing list, please provide your name and full mailing address below:

Name: Amy Kindree

Mailing Address (including your postal code):
Concession 9 Hurta POB 1PO

WE WELCOME YOUR INPUT. PLEASE COMPLETE AND SUBMIT THIS COMMENT SHEET BEFORE LEAVING - THANK YOU

Alternatively, if you prefer to mail/fax your response:
Sean Male, Environmental Coordinator
4342 Queen St, Suite 500, Niagara Falls, Ontario, L2E 7J7
Phone: 905-374-5200 Fax: 905-374-1157

For more information regarding the Projects please refer to northlandpower.ca

*** Please note that all information provided on this form will become part of the formal record and will be published in Project reports that will be available for public review**

Comment Sheet

Final Public Meeting: Tuesday, August 21, 2012

Northland Power –Abitibi, Empire and Martin's Meadows Solar Projects
and associated 115kV Transmission Line

1. Please indicate whether your interest is pertinent to one or both of the proposed Project(s) by circling one or both of the following:

Abitibi

Empire

Martin's Meadows

115kV Transmission Line

2. Please describe where you reside in relation to the Project location(s)? _____

I Lullabelle Lake - where the original transmission line was proposed (in a flight path !!!)

3. Please provide any relevant information related to the Project location(s) which, in your opinion, should be considered in assessing the potential effects of the Project(s)?

→ the site are too far from the existing junction in Hilda... There are many abandoned farmstead, club, general stores in Hilda that would have been better suited to the project. (less transmission required). \$\$\$

⇒ I question the motives of who made this proposal... friend helping friends make a buck.

Continued on back



4. Please provide any comments, questions or concerns related to the Project(s).

⇒ It seems only a couple of people are benefiting from the project, as the detriment of many others. Gackmeyer is the most populated rural area in the vicinity, with the better agricultural lands.

If you would you like to be included on the Project mailing list, please provide your name and full mailing address below:

Name: _____

Mailing Address (including your postal code):

WE WELCOME YOUR INPUT. PLEASE COMPLETE AND SUBMIT THIS COMMENT SHEET BEFORE LEAVING - THANK YOU

Alternatively, if you prefer to mail/fax your response:
Sean Male, Environmental Coordinator
4342 Queen St, Suite 500, Niagara Falls, Ontario, L2E 7J7
Phone: 905-374-5200 Fax: 905-374-1157

For more information regarding the Projects please refer to northlandpower.ca

*** Please note that all information provided on this form will become part of the formal record and will be published in Project reports that will be available for public review**

Please Sign In

(PLEASE USE BLOCK LETTERS)

Northland Power – Final Public Meeting

Project: Long Lake Solar Project and 115 kV Transmission Line

Date: Tuesday August 21, 2012

Name	Complete Mailing Address			Phone (Please include area code)
	Street	City	Postal Code	
HANS KLIVER	L24/25 CON 8/9	CLUTE	POLICO	272-2290
RICHARD KINDREE	123, +24 CON 9	HUNTA	POL 1PO	272-2989
RON FOWLER	#69 CLUTE	HUNTA	POL 1PO	272-6703
ELAINE SHIER	HUNTA ^{Lot CON 5} _{CALPORN}	HUNTA	POL 1PO	272 6317
John K...	Lot 15 Concession 9		POLICO	272 4400
JAMES WRIGHT	lot 26 con 8	HUNTA	POL IPO	272-6309
DAN BILLS	Lot 22	HUNTA	POL IPO	272-6758
Chris Clark				272-3344
Denis Bradette	LOT 25/CON 7	HUNTA		465-3667
Cathy Shier		HUNTA		335-3251
Luc Mayer	lot 8 lower description LAKE			272-4597

* Please note that all information provided on this form will become part of the formal record and will be published in Project reports that will be available for public review

Please Sign In

(PLEASE USE BLOCK LETTERS)

Northland Power – Final Public Meeting

Project: Long Lake Solar Project and 115 kV Transmission Line

Date: Tuesday August 21, 2012

Name	Complete Mailing Address			Phone (Please include area code)
	Street	City	Postal Code	
Philip & Shirley Yanda	404 15th Ave	Cochrane	POL-1C0	(705) 272-2933
Elizabeth Hardin	Doplar Ridge Rd	Hunts	POL IPO	705-272-6531
Devin Landar	Con 8 & 9 ^{Culdes} ^{trap}	Hunts	POL-1P0	705 272 6306
Barbara Lacoursiere	Con. 8+9	Hunts	POL 1C0	705-272-4400
Rajeev Lacoursiere	Con. 8+9	Hunts	POL 1C0	705-272-4400
Chris Clarke				705-272-3344
Joanne Mayer	Lot 8 Con 8+9	Hunts	POL 1C0	705-272-4591
Clifford Blackburn	Lot 27 Con 27	Hunts	POL 1C0	705 272-6324
Allan Van Alstine	Lot 17-18 Con 6+7	Frederickhouse	POL 1K0	705-272-8895
HAZEL VAN ALSTINE	LOT 20 CON 6	^{CLUTE TWP} FREDERICKHOUSES	POL 1K0	705-272-6365
Daniel Desjardins	Lot 21 con 8+9	Hunts	POL 1C0	(705) 272 6076

* Please note that all information provided on this form will become part of the formal record and will be published in Project reports that will be available for public review

Comment Sheet
Final Public Meeting: Tuesday, August 21, 2012
Northland Power – Long Lake Solar Project
and 115kV Transmission Line

1. Please indicate whether your interest is pertinent to one or both of the proposed Project(s) by circling one or both of the following:

Long Lake Solar Project

115kV Transmission Line

2. Please describe where you reside in relation to the Project location(s)? _____

3. Please provide any relevant information related to the Project location(s) which, in your opinion, should be considered in assessing the potential effects of the Project(s)?

We don't want this project to go through

We need another meeting tell us when that will be.

Elaine Shue

Continued on back



Comment Sheet

Final Public Meeting: Tuesday, August 21, 2012 Northland Power – Long Lake Solar Project and 115kV Transmission Line

1. Please indicate whether your interest is pertinent to one or both of the proposed Project(s) by circling one or both of the following:

Long Lake Solar Project

115kV Transmission Line

2. Please describe where you reside in relation to the Project location(s)? I am a
property owner on Lower Deception Lake

3. Please provide any relevant information related to the Project location(s) which, in your opinion, should be considered in assessing the potential effects of the Project(s)?

I disagree with the proposal to bring the
transmission line along Cams 8-9. I urge that
an alternative route (eg paralleling the
Algonguin Power line) be explored and
request that another meeting be held with the
residents of the Huntar / Lower Deception area
to respond to the many good issues raised
at this meeting

Gareth Harden

21 August 2012

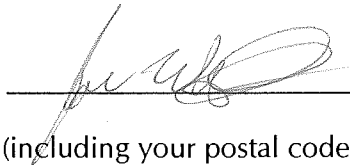
Continued on back



4. Please provide any comments, questions or concerns related to the Project(s).

If you would you like to be included on the Project mailing list, please provide your name and full mailing address below:

Name:

 - SAMUEL URICAT

Mailing Address (including your postal code):

BOX 2, RRDY HOWA out .POLIPO

WE WELCOME YOUR INPUT. PLEASE COMPLETE AND SUBMIT THIS COMMENT SHEET BEFORE LEAVING - THANK YOU

Alternatively, if you prefer to mail/fax your response:
Sean Male, Environmental Coordinator
4342 Queen St, Suite 500, Niagara Falls, Ontario, L2E 7J7
Phone: 905-374-5200 Fax: 905-374-1157

For more information regarding the Projects please refer to northlandpower.ca

*** Please note that all information provided on this form will become part of the formal record and will be published in Project reports that will be available for public review**

4. Please provide any comments, questions or concerns related to the Project(s).

Would like to see another meeting held to be made aware of the results of looking into other option routes.

If you would you like to be included on the Project mailing list, please provide your name and full mailing address below:

Name:

HAZEL VAN ALSTINE

Mailing Address (including your postal code):

Box 2 Site 1
FREDERICKHOUSE DR. POLIKO

WE WELCOME YOUR INPUT. PLEASE COMPLETE AND SUBMIT THIS COMMENT SHEET BEFORE LEAVING - THANK YOU

Alternatively, if you prefer to mail/fax your response:

Sean Male, Environmental Coordinator
4342 Queen St, Suite 500, Niagara Falls, Ontario, L2E 7J7
Phone: 905-374-5200 Fax: 905-374-1157

For more information regarding the Projects please refer to northlandpower.ca

*** Please note that all information provided on this form will become part of the formal record and will be published in Project reports that will be available for public review**

Comment Sheet
Final Public Meeting: Tuesday, August 21, 2012
Northland Power – Long Lake Solar Project
and 115kV Transmission Line

1. Please indicate whether your interest is pertinent to one or both of the proposed Project(s) by circling one or both of the following:

Long Lake Solar Project

115kV Transmission Line

2. Please describe where you reside in relation to the Project location(s)? _____

Plot 15 Lowerdeception Lake

3. Please provide any relevant information related to the Project location(s) which, in your opinion, should be considered in assessing the potential effects of the Project(s)?

What final meeting!!!

This was the first

to my knowledge!

R Brown

Continued on back



Comment Sheet
Final Public Meeting: Tuesday, August 21, 2012
Northland Power – Long Lake Solar Project
and 115kV Transmission Line

1. Please indicate whether your interest is pertinent to one or both of the proposed Project(s) by circling one or both of the following:

Long Lake Solar Project

115kV Transmission Line

2. Please describe where you reside in relation to the Project location(s)? _____

3. Please provide any relevant information related to the Project location(s) which, in your opinion, should be considered in assessing the potential effects of the Project(s)?

DAN RIPPES DRIVEN Lot 22.

Dan Desjardins Lot 21 need one more meeting

Continued on back



Comment Sheet
Final Public Meeting: Tuesday, August 21, 2012
Northland Power – Long Lake Solar Project
and 115kV Transmission Line

1. Please indicate whether your interest is pertinent to one or both of the proposed Project(s) by circling one or both of the following:

Long Lake Solar Project

115kV Transmission Line

2. Please describe where you reside in relation to the Project location(s)? _____

MY FARM IS ON R19 of Elate

3. Please provide any relevant information related to the Project location(s) which, in your opinion, should be considered in assessing the potential effects of the Project(s)?

I would like another meeting to

further explore other options

Northland has not done their

homework.

See letter

Continued on back



Luc Mayer
Cochrane, Ont.
705-272-4597

Comment Sheet

Final Public Meeting: Tuesday, August 21, 2012
Northland Power – Long Lake Solar Project
and 115kV Transmission Line

1. Please indicate whether your interest is pertinent to one or both of the proposed Project(s) by circling one or both of the following:

Long Lake Solar Project

115kV Transmission Line

2. Please describe where you reside in relation to the Project location(s)? _____

lower Deception Lake. Lot 8

3. Please provide any relevant information related to the Project location(s) which, in your opinion, should be considered in assessing the potential effects of the Project(s)?

OK WITH LONG LAKE SOLAR PROJECT.

NO POWER LINE THRU SOUTH END OF LAKE.

~~SENSITIVE~~ SENSITIVE AREA - WETLAND

CREEK OF SHIER LAKE MEETS DECEPTION.

DO NOT WANT TO CHANGE LANDSCAPE (VIEW)

EROSION INTO LAKE

Should follow Algonquin Power Line
less impact TO WILDLIFE ECT.....

This is an area that I Continued on back

have "played", enjoyed, hunted, fished for
almost 40 years. - I want to KEEP IT THE
way IT IS - IT IS MY LIFE STYLE!

4. Please provide any comments, questions or concerns related to the Project(s).

Feel like "railroaded" into
this power line.

Decision is already made

If you would you like to be included on the Project mailing list, please provide your name and full mailing address below:

Name:

Luc Mayer

Mailing Address (including your postal code):

Box 2511
Cochrane, Ont
POL 1C0

WE WELCOME YOUR INPUT. PLEASE COMPLETE AND SUBMIT THIS COMMENT SHEET BEFORE LEAVING - THANK YOU

Alternatively, if you prefer to mail/fax your response:

Sean Male, Environmental Coordinator
4342 Queen St, Suite 500, Niagara Falls, Ontario, L2E 7J7
Phone: 905-374-5200 Fax: 905-374-1157

For more information regarding the Projects please refer to northlandpower.ca

*** Please note that all information provided on this form will become part of the formal record and will be published in Project reports that will be available for public review**

Comment Sheet
Final Public Meeting: Tuesday, August 21, 2012
Northland Power – Long Lake Solar Project
and 115kV Transmission Line

1. Please indicate whether your interest is pertinent to one or both of the proposed Project(s) by circling one or both of the following:

Long Lake Solar Project

115kV Transmission Line

2. Please describe where you reside in relation to the Project location(s)? _____

Lake # 15
Parcels 8 & 9
Merritt

3. Please provide any relevant information related to the Project location(s) which, in your opinion, should be considered in assessing the potential effects of the Project(s)?

The questions asked were
not answered or at best
vaguely.

Another meeting is
demanded!

Barbara Lacourse

Continued on back



Comment Sheet
Final Public Meeting: Tuesday, August 21, 2012
Northland Power – Long Lake Solar Project
and 115kV Transmission Line

1. Please indicate whether your interest is pertinent to one or both of the proposed Project(s) by circling one or both of the following:

Long Lake Solar Project

115kV Transmission Line

2. Please describe where you reside in relation to the Project location(s)? _____

I live in Huntara on Van Alstine Rd. (LOT 25/CON 7)

3. Please provide any relevant information related to the Project location(s) which, in your opinion, should be considered in assessing the potential effects of the Project(s)?

It would be very good if you had another meeting after the Aug. 21st, 2012 meeting to explain the outcome of checking in with Algonguin Power and other issues

Continued on back



4. Please provide any comments, questions or concerns related to the Project(s).

This project was not researched with the land owners of this area in mind. We at this meeting have given other options to this line. So other meetings on these plans should be done.

If you would you like to be included on the Project mailing list, please provide your name and full mailing address below:

Name:

Timothy Pridel

Mailing Address (including your postal code):

WE WELCOME YOUR INPUT. PLEASE COMPLETE AND SUBMIT THIS COMMENT SHEET BEFORE LEAVING - THANK YOU

Alternatively, if you prefer to mail/fax your response:
Sean Male, Environmental Coordinator
4342 Queen St, Suite 500, Niagara Falls, Ontario, L2E 7J7
Phone: 905-374-5200 Fax: 905-374-1157

For more information regarding the Projects please refer to northlandpower.ca

*** Please note that all information provided on this form will become part of the formal record and will be published in Project reports that will be available for public review**

Comment Sheet
Final Public Meeting: Tuesday, August 21, 2012
Northland Power – Long Lake Solar Project
and 115kV Transmission Line

1. Please indicate whether your interest is pertinent to one or both of the proposed Project(s) by circling one or both of the following:

Long Lake Solar Project

115kV Transmission Line

2. Please describe where you reside in relation to the Project location(s)? _____

COTTAGE AT LOWER DECTION LAKE
HOUSE ~~AT~~ ADJACENT TO HUNTA SS.

3. Please provide any relevant information related to the Project location(s) which, in your opinion, should be considered in assessing the potential effects of the Project(s)?

THERE SHOULD AT THE VERY LEAST
BE AN ADDITIONAL MEETING TO
DISCUSS THE ALGONQUIN POWER
LINE OPTION.

Continued on back



Comment Sheet
Final Public Meeting: Tuesday, August 21, 2012
Northland Power – Long Lake Solar Project
and 115kV Transmission Line

1. Please indicate whether your interest is pertinent to one or both of the proposed Project(s) by circling one or both of the following:

Long Lake Solar Project

115kV Transmission Line

2. Please describe where you reside in relation to the Project location(s)? _____

Lot 8 Poplar Ridge Rd.
Hunta.

3. Please provide any relevant information related to the Project location(s) which, in your opinion, should be considered in assessing the potential effects of the Project(s)?

We would like another meeting with regard to the Transmission Line to explore other options - mainly Algonquin Line Sharing. You assured us that our comments would be taken into consideration.

Continued on back



4. Please provide any comments, questions or concerns related to the Project(s).

It appears This meeting was an information session only - our comments and suggestions were effectively brushed off and no answers were provided to our questions - skirting many issues

If you would you like to be included on the Project mailing list, please provide your name and full mailing address below:

Name: Jeanne Mayer
Mailing Address (including your postal code):
Box 2511
Cochran, ON P0L 1C0

WE WELCOME YOUR INPUT. PLEASE COMPLETE AND SUBMIT THIS COMMENT SHEET BEFORE LEAVING - THANK YOU

Alternatively, if you prefer to mail/fax your response:
Sean Male, Environmental Coordinator
4342 Queen St, Suite 500, Niagara Falls, Ontario, L2E 7J7
Phone: 905-374-5200 Fax: 905-374-1157

For more information regarding the Projects please refer to northlandpower.ca

*** Please note that all information provided on this form will become part of the formal record and will be published in Project reports that will be available for public review**

Comment Sheet
Final Public Meeting: Tuesday, August 21, 2012
Northland Power – Long Lake Solar Project
and 115kV Transmission Line

1. Please indicate whether your interest is pertinent to one or both of the proposed Project(s) by circling one or both of the following:

Long Lake Solar Project

115kV Transmission Line

2. Please describe where you reside in relation to the Project location(s)? EAST 1/2 LOT
24 CONCESSION 8 & ALSO OWN LOT 25 CONC 9

3. Please provide any relevant information related to the Project location(s) which, in your opinion, should be considered in assessing the potential effects of the Project(s)?

THIS PROJECT SHOULD DEFINITELY CONSIDER
TWINNING WITH THE EXISTING EASEMENT
NOW UTILIZED BY ALGONQUIN POWER
RATHER THAN RUNNING THE LINE ALONG THE
LOWER END OF LOWER DECEPTION LAKE OR
THE WEST END OF CONC 8 & 9 CLUTE.

Continued on back



August 17, 2012

Mr. Sean Male and meeting attendees:

Regretfully my wife and I cannot attend this meeting due to family matters. We would like through this letter to express our concerns about the proposed transmission line.

We are opposed to a transmission line that follows along the 8+9 side road and the shoreline of Lower Deception Lake.

The concerns are:

- ① Visual - we did not buy a cottage lot on a lake to look at transmission line. It was bought to look at trees, lakes and wildlife.
- ② Devaluation of Property Values - we feel it would be difficult to sell a cottage with a view of a transmission line.
- ③ Herbicide Spraying on Right Away - Spraying around a lake and homes where children and adults live, fish and boat is not environmentally friendly.

Our questions are:

- ① Considering that there are 8760 hours in a year that solar power has an Achilles' heel in that it can only generate power when the sun shines and the transmission line is in view 100% of the time how many generation hours will there be each year?
- ② How high will the poles be?
- ③ How wide is the right away?
- ④ What is the conductor size?
- ⑤ Will there be subsidies provided by the federal and provincial governments for this installation. If so will those subsidies be reflected in the billed generation costs?
- ⑥ Who will be manufacturing the panels and what is the country of origin?
- ⑦ What is the carbon footprint?

In conclusion we offer the following thought; if the transmission line is put in place this

could open up the adjacent concession lots to solar installations up to the Capacity Transmission line.

Could we have a show of hands of those who favor the transmission lines project?

Thank you for your time,

Jeanne Bailor
Thomas Bailor
Lot 3 - Poplar Ridge Road
Lower Deception Lake

We are opposed to a transmission line running along concession 8 & 9 Clute Township and anywhere near Lower Deception Lake.

<u>Therese Mayer</u>	<u>Therese Mayer</u>	<u>705-272-4597</u>	<u>Lot 8</u>	<u>Lower Deception Lake</u>
<u>Cathy Sheer</u>	<u>Cathy Sheer</u>	<u>705-272-2871</u>	<u>Lot 4</u>	<u>Lower Deception Lake</u>
<u>HANS KLUVER</u>	<u>[Signature]</u>	<u>272-2290</u>	<u>LOT E 1/2 24 CONC 8 CLUTE</u>	<u>-</u>
<u>[Signature]</u>	<u>[Signature]</u>	<u>272-2290</u>	<u>LOT LOT 25 CONC 9 CLUTE</u>	<u>-</u>
<u>pur Gage</u>	<u>pur Mayer</u>	<u>272-4597</u>	<u>lot 8</u>	<u>Lower Deception Lake</u>
<u>Elaine Sheer</u>	<u>Elaine Sheer</u>	<u>705-272-6317</u>	<u>Munta</u>	
<u>Rick & Amy</u>	<u>KINDREE (LAND OWNER)</u>		<u>L23, 24</u>	<u>CON #9</u>
<u>John Delean</u>	<u>JOHN DELEAN</u>	<u>705-272-5456</u>	<u>LOT 12</u>	<u>LOWER DECEPTION LAKE</u>
<u>John Barb</u>	<u>John & Barb Lacourciere</u>		<u>LOT 15</u>	<u>"</u>
<u>Gabriel Hardin</u>	<u>ELIZABETH HARDIN</u>		<u>Lot 16</u>	<u>"</u>
<u>Daniel Desjardins</u>	<u>Dan Desjardins</u>		<u>Lot 21</u>	<u>"</u>
<u>Joanne Desjardins</u>	<u>Joanne Desjardins</u>		<u>"</u>	<u>"</u>

We are opposed to a transmission line running along concession 8 & 9 Clute Township and anywhere near Lower Deception Lake.

~~Krista Beadman~~ Krista Beadman
Chris Jo ~~id~~

Kelly Girard Kelly Girard

~~Don Perigo~~
L. Die

Randy Farquhar Randy Farquhar
Eric Morin Eric Morin

Josee Caron Josee Caron

~~Wayne Snier~~ WAYNE SNIER

Tina Shier Tina SHIER

~~DAN DIER~~ DAN DIER

Clyde Blackburn

Cochrane, On.

Cochrane, On.

Cochrane, On

Cochran, On

Cochran On

Cochrane, On.

Kapuskasing

Kapuskasing

HUNTA

Hunta.

Hunta

We are opposed to a transmission line running along concession 8 & 9 Clute Township and anywhere near Lower Deception Lake.

Denis DENIS BRADETTE
JAMES WRIGHT
RON FOWLER

HUNTA ON
HUNTA,
Hunta

Welcome to the Public Meeting for the Long Lake Solar Project and 115-kV Transmission Line



August 21, 2012



Agenda

Presentation – 4:30 pm to 5:00 pm

- Introduction
- Long Lake Solar Project
- Transmission Line
- Next Steps

Question and Answer Period – 5:00 pm to 5:30 pm

Open House – 5:30 pm to 6:30 pm

Northland

Introduction



Purpose of this Public Meeting

- To communicate project details and to solicit stakeholder input
- You Can:
 - Ask Questions
 - Obtain information
 - Gain a greater understanding of the Project and the REA process
 - Express any comments or concern
- Comments or Concerns can be provided:
 - In a comment form
 - Through discussions with the representatives in attendance
 - Or contact the Environmental Coordinator, Sean Male, after the meeting

Northland Power Inc.

Northland Power develops and operates clean and green power generation facilities, mainly in the provinces of Ontario and Quebec. Our facilities produce about 870 MW of electricity. Northland Power has been in business since 1987 and has been publicly traded since 1997.

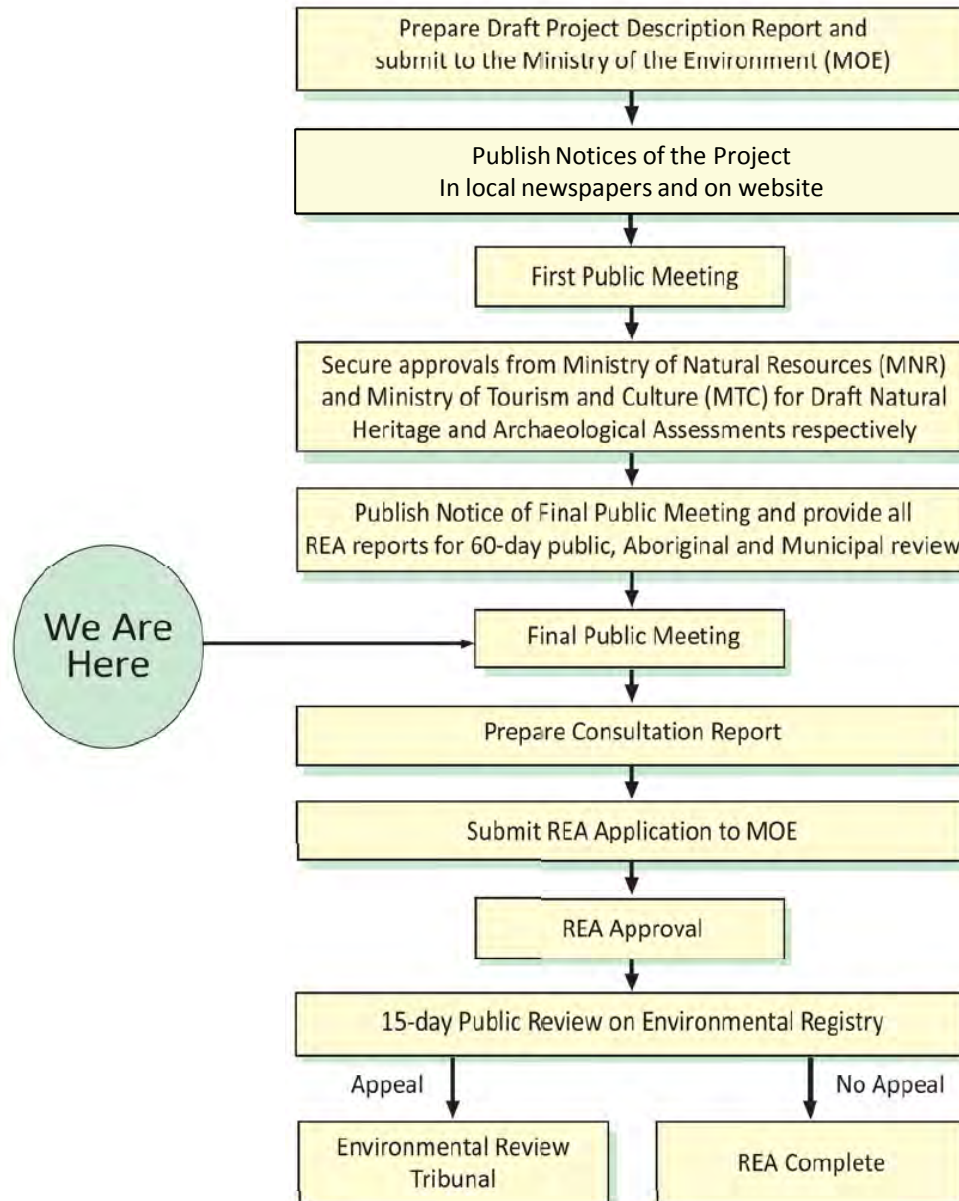
Sustainability is a core value of Northland Power Inc. Sustainability has many dimensions including:

- Environmental
- Community
- Health and Safety
- Financial
- Operational

Benefits of Solar Energy

- Advantages of solar energy include:
 - Fuel is free
 - No pollutants or green house gases
 - Components are safe and non-toxic
 - Low environmental impact due to low maintenance costs
 - Power production matches supply and demand patterns

Renewable Energy Approval (REA) Process



Northland

Long Lake Solar Project

A wide-angle photograph of a solar farm. The foreground is dominated by rows of blue photovoltaic panels, each with a white grid pattern. The panels are tilted at an angle. In the background, more rows of panels stretch towards the horizon under a clear, bright blue sky. The overall scene is clean and modern, representing a large-scale renewable energy project.

Long Lake – Project Location

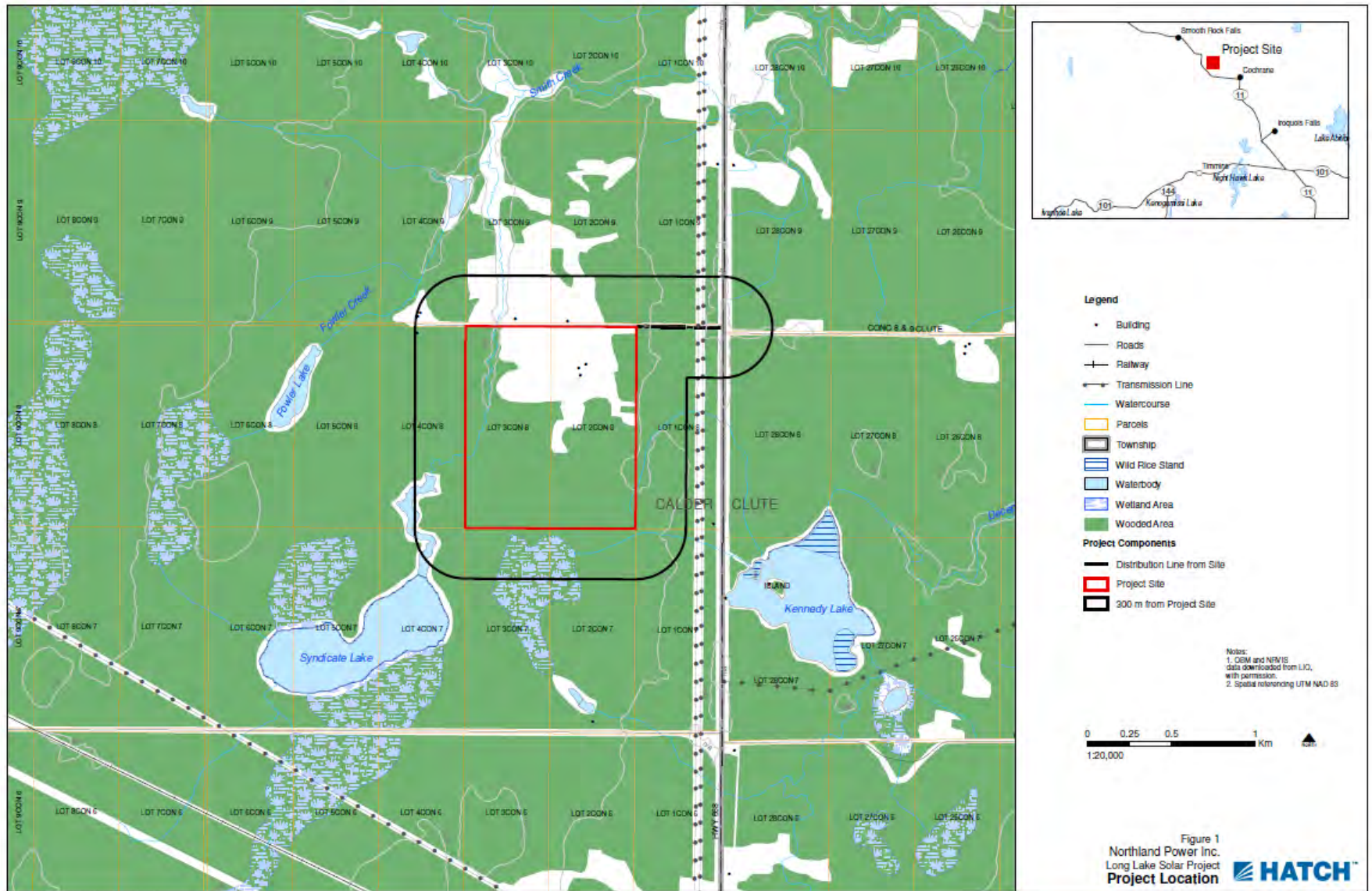
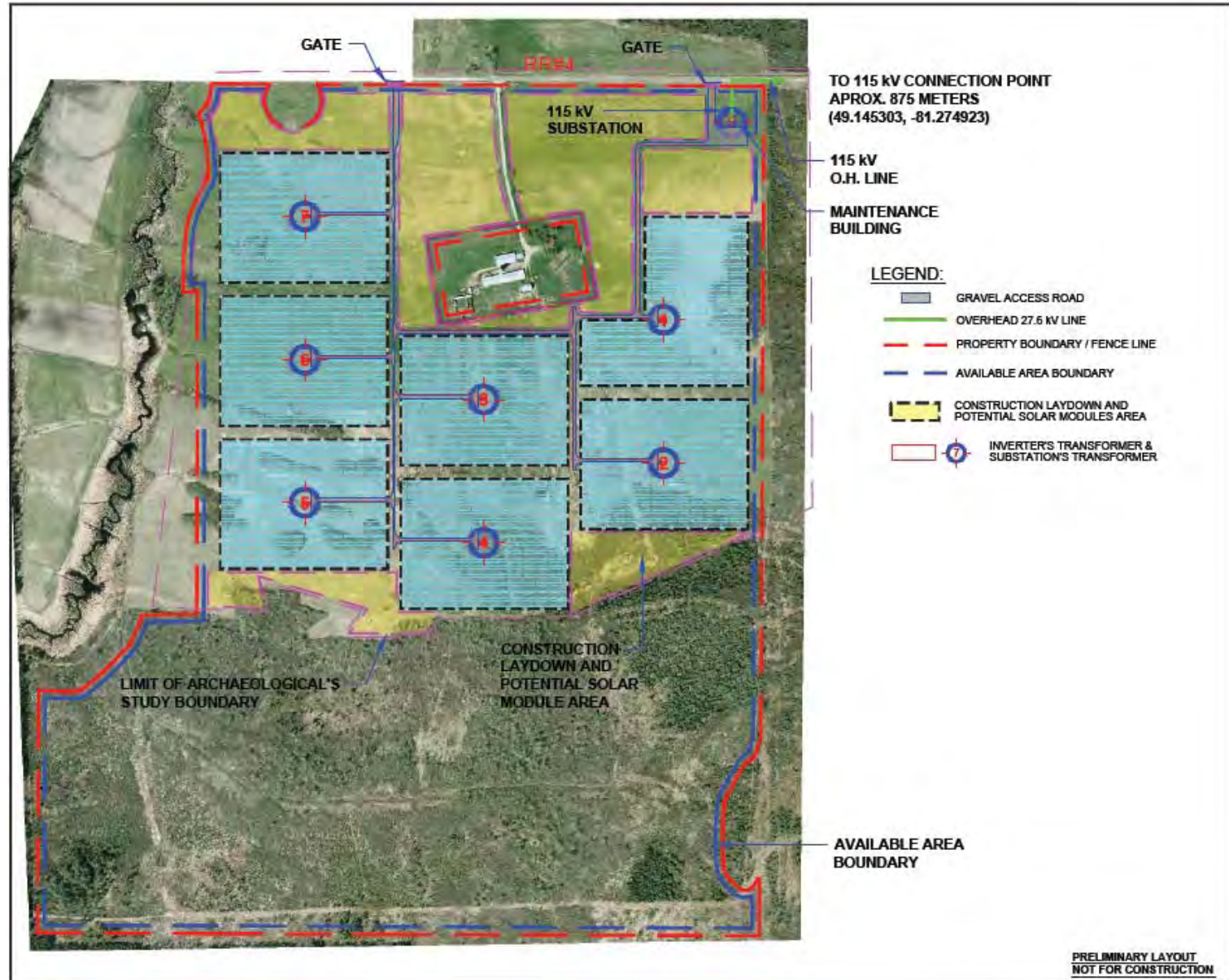


Figure 1
Northland Power Inc.
Long Lake Solar Project
Project Location **HATCH**

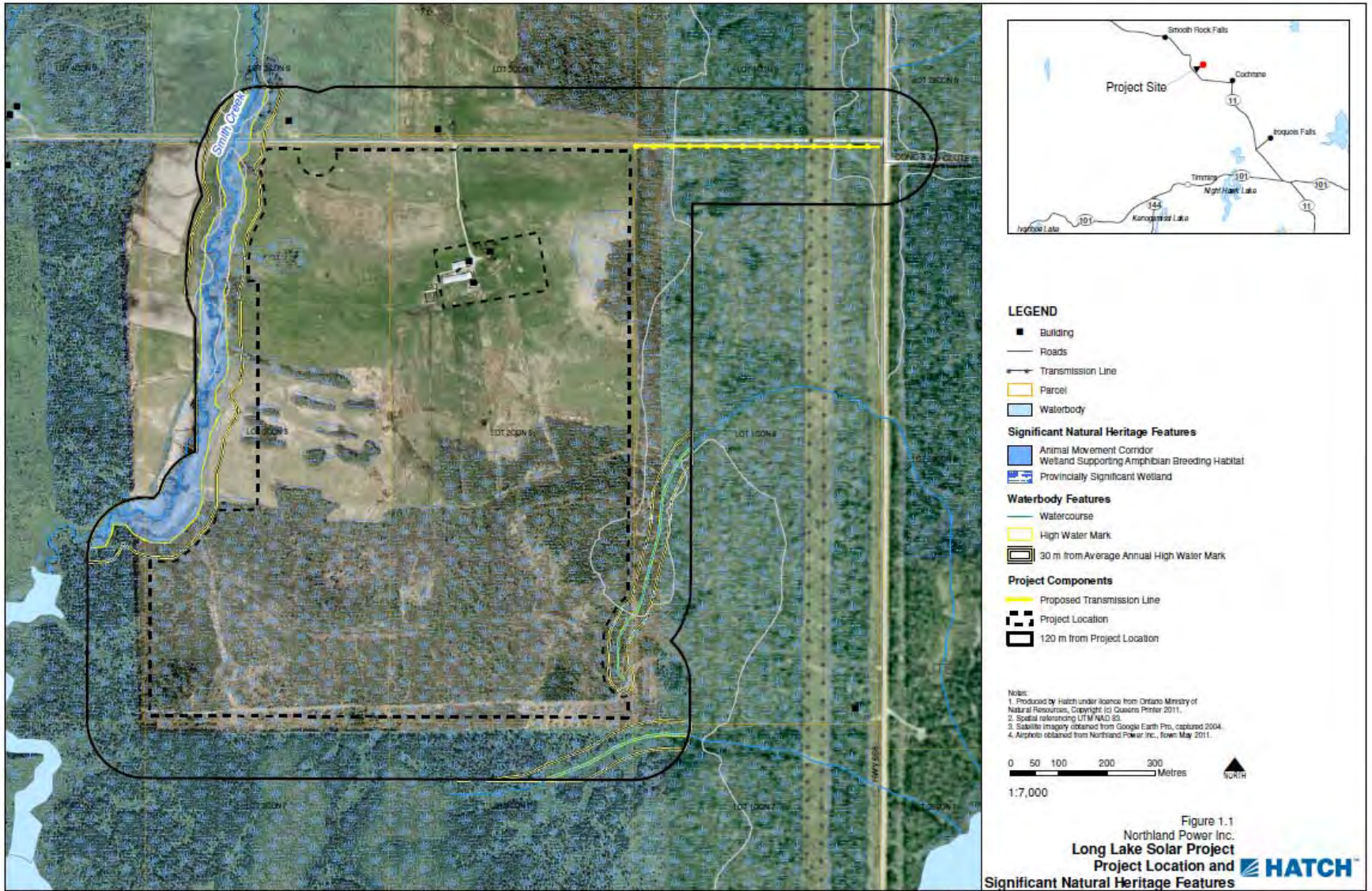
Long Lake – Proposed Project Layout



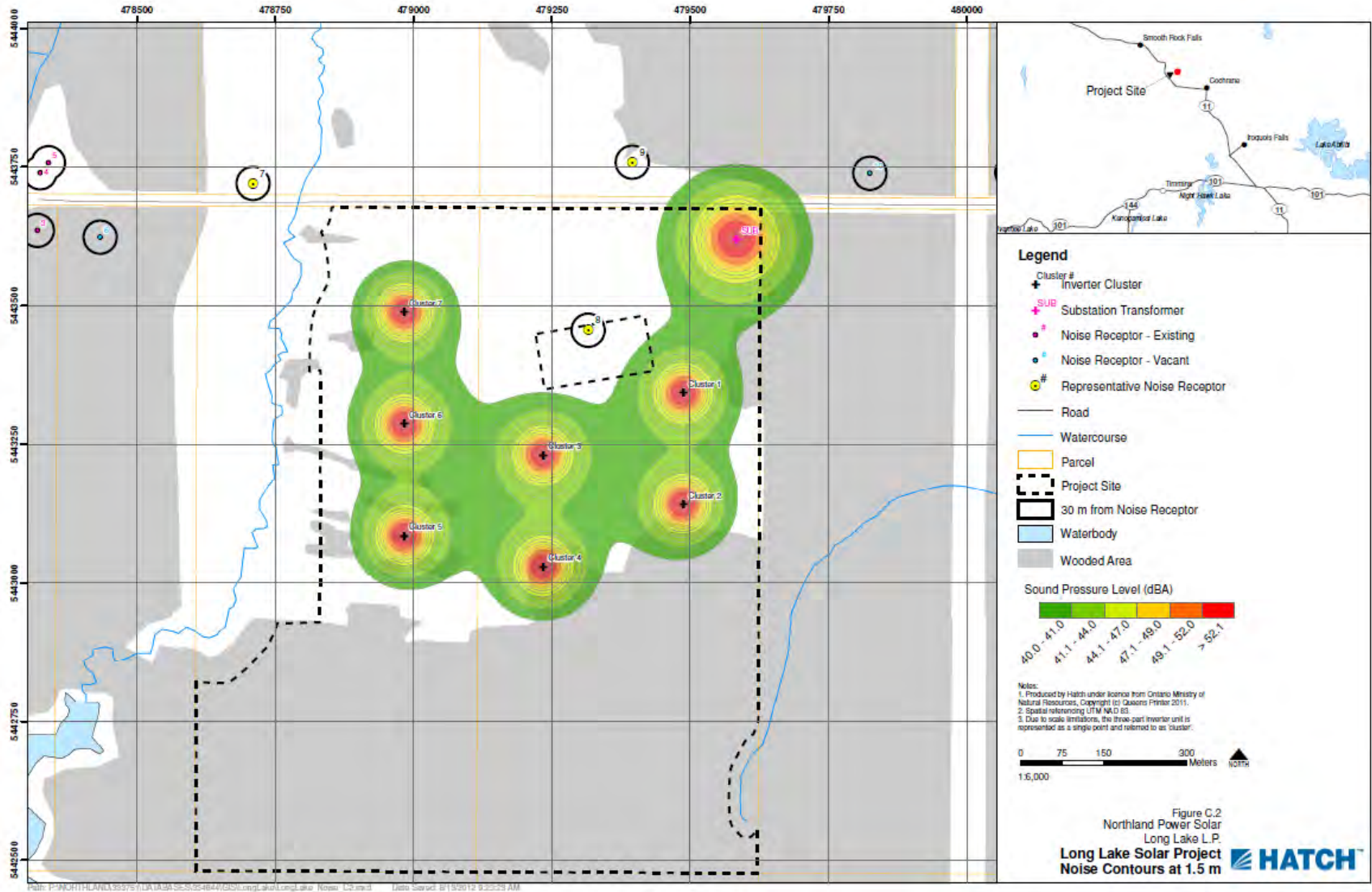
Long Lake - Anticipated Project Schedule

- Submission of Renewable Energy Approval – September 2012
- Renewable Energy Approval Received – February 2013
- Construction Begins – February 2013
- Construction Complete – September 2013

Long Lake – Environmental Features



Long Lake – Noise Assessment

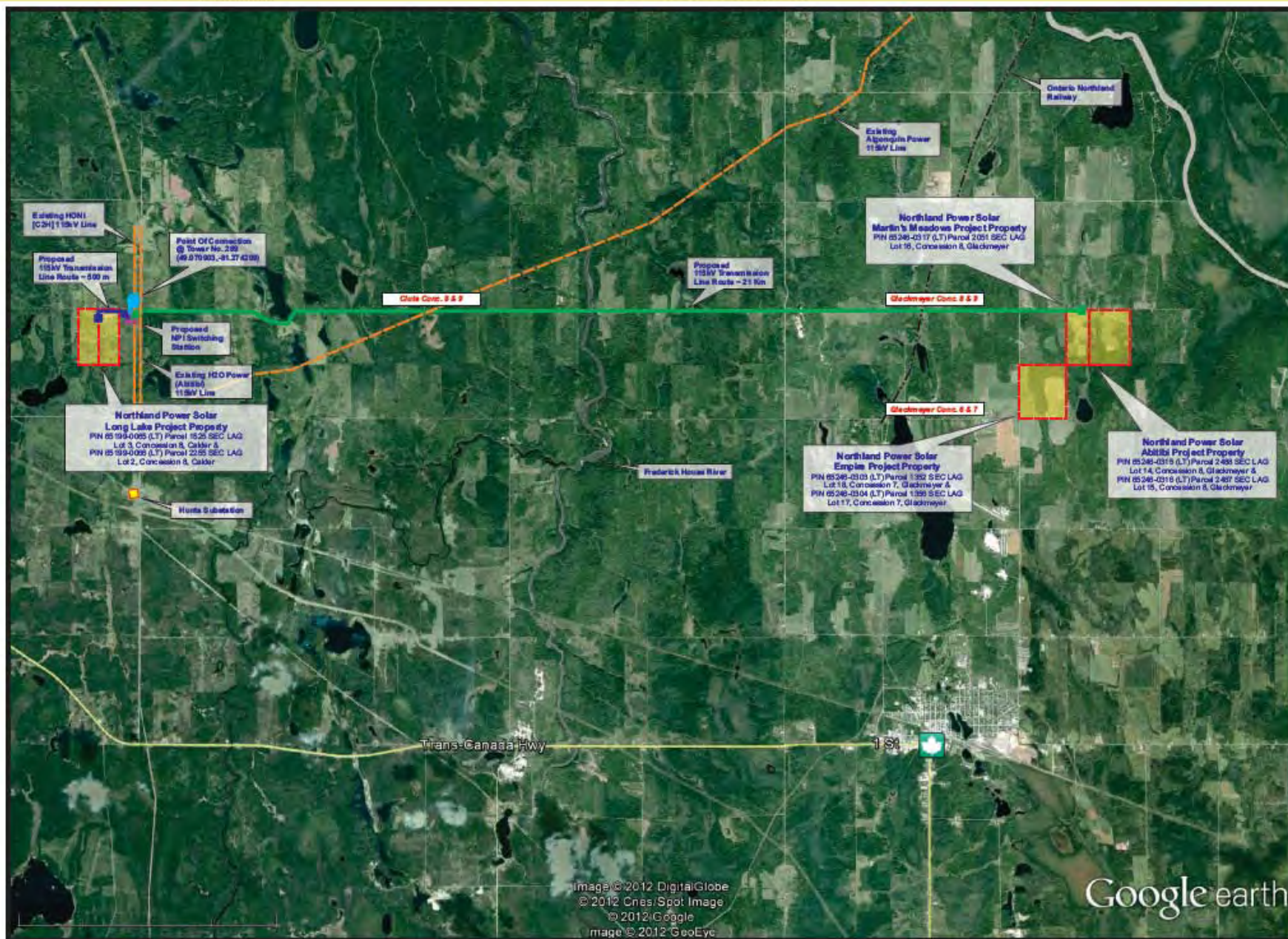


Northland

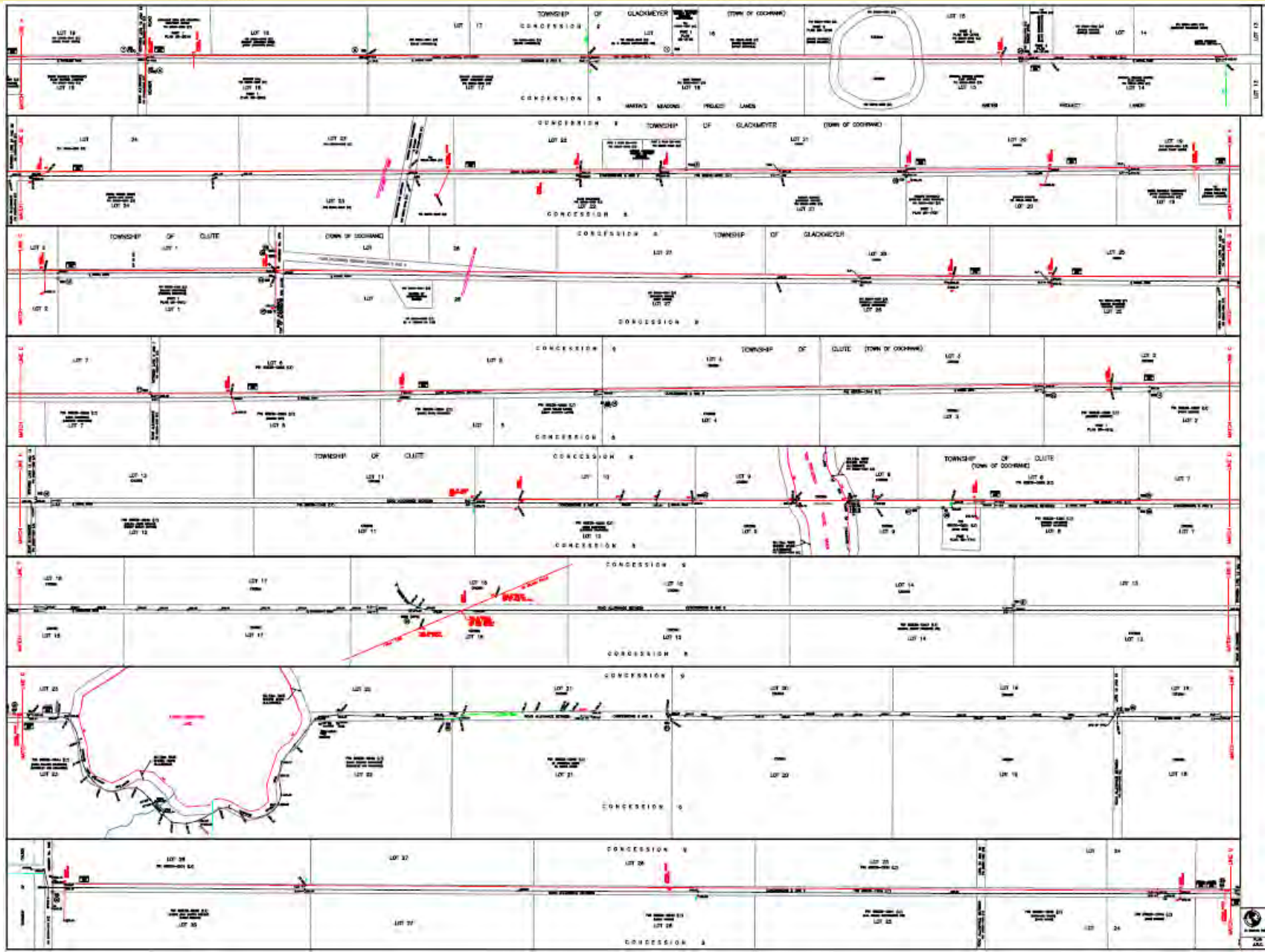
115 kV Transmission Line



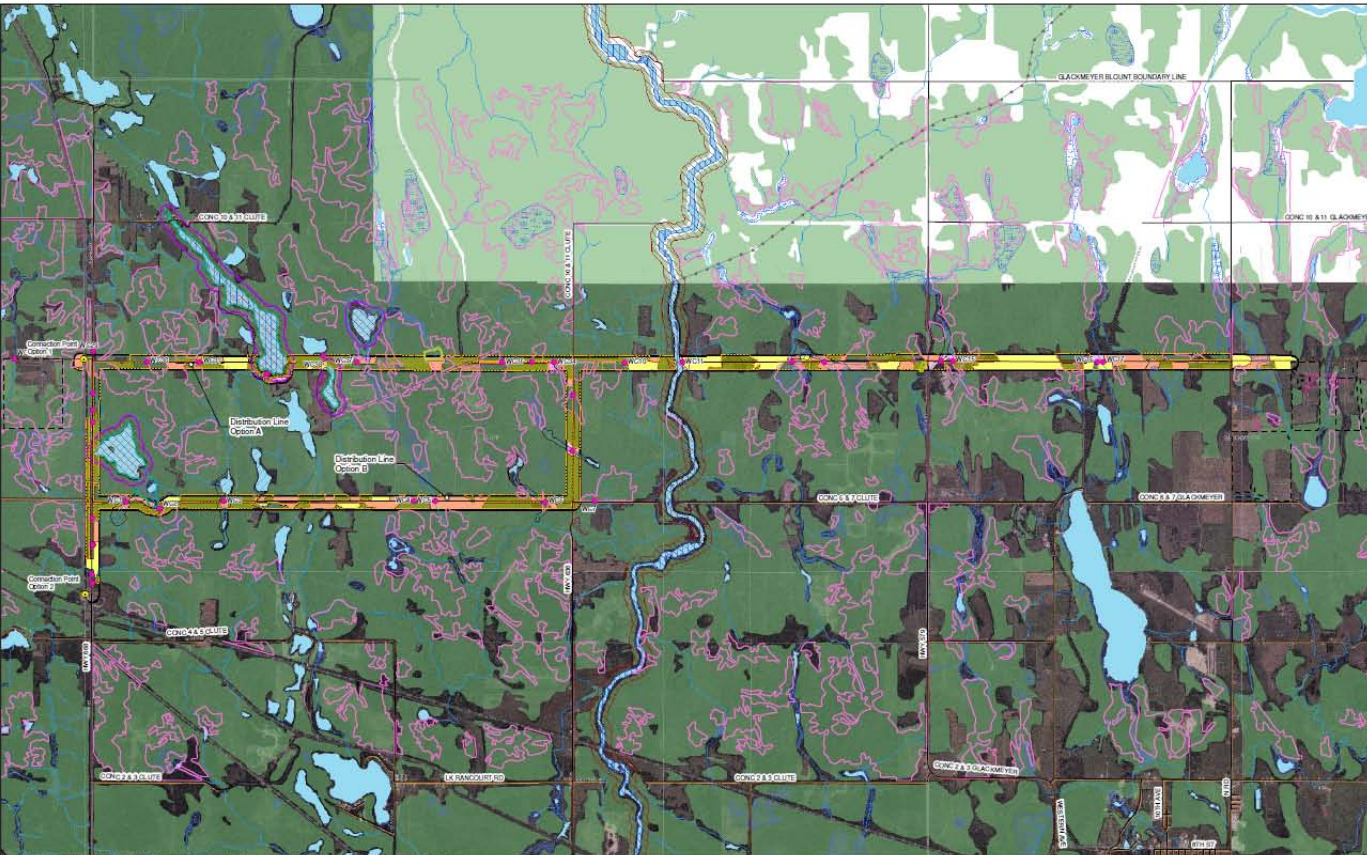
115 kV Transmission Line – Preferred Route



115 kV Transmission Line – Legal Survey



115kV Transmission Line – Environmental Features



Legend

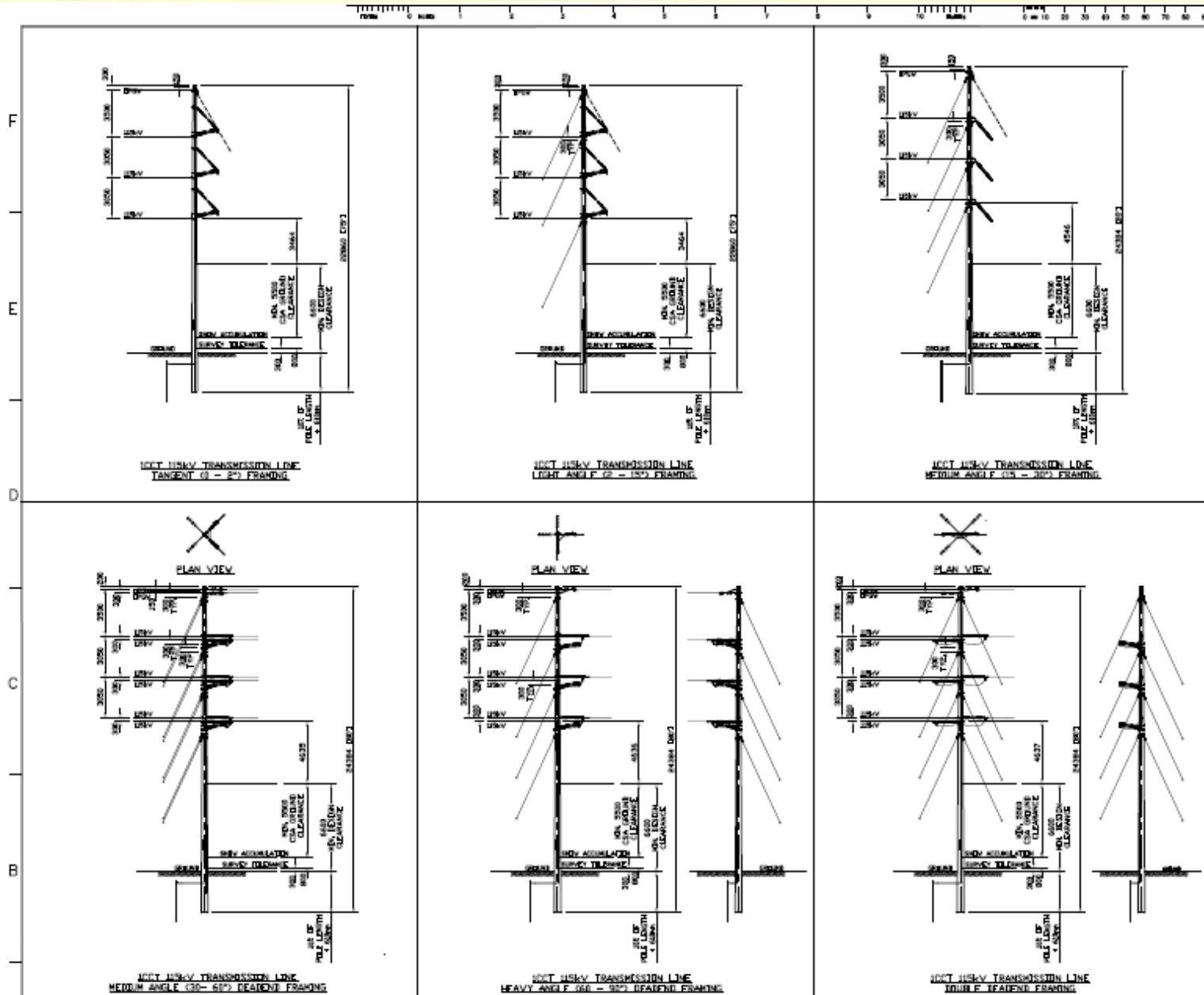
- Road
 - Utility Line
 - Area Sensitive Grassland Habitat / Short-eared Owl Habitat
 - Area Sensitive Shrubland Habitat / *Carex Wiegandii* Habitat
 - Area Sensitive Woodland / Canada Warbler / Olive-sided Flycatcher / *Vaccinium ovalifolium* Habitat
 - Bald Eagle Habitat
 - Carex haydenii* Habitat
 - Carex liliacea* Habitat
 - Common Nighthawk Habitat
 - Old Growth or Mature Forest / Northern Long-eared Bat and Specialized Mink, Otter, Marten, and Fisher Denning Site Raptor Nesting Habitat
 - Moose Aquatic Feeding Area
 - Moose Late Winter Habitat / Winter Deer Yard
 - Scirpus heterochaetus* Habitat
 - Seeps and Springs / *Carex tetanica* Habitat
 - Red-necked Grebe Habitat
 - Waterfowl Stopover and Staging Area
 - Waterfowl Nesting Habitat
 - Wetland Area
 - Wetlands Supporting Amphibian Breeding Ponds
- Waterbody Features**
- Watercrossing (Hatch)
 - Watercourse (LIO Mapping)
 - Waterbody
- Project Infrastructure**
- Connection Point
 - Northland Power Project Location
 - 120 m from Distribution Line

Notes:
 1. Produced by Hatch under license from Ontario Ministry of Natural Resources. Copyright © Queens Printer 2011.
 2. Spatial referencing UTM NAD 83.
 3. Satellite Imagery from Ministry of Natural Resources.

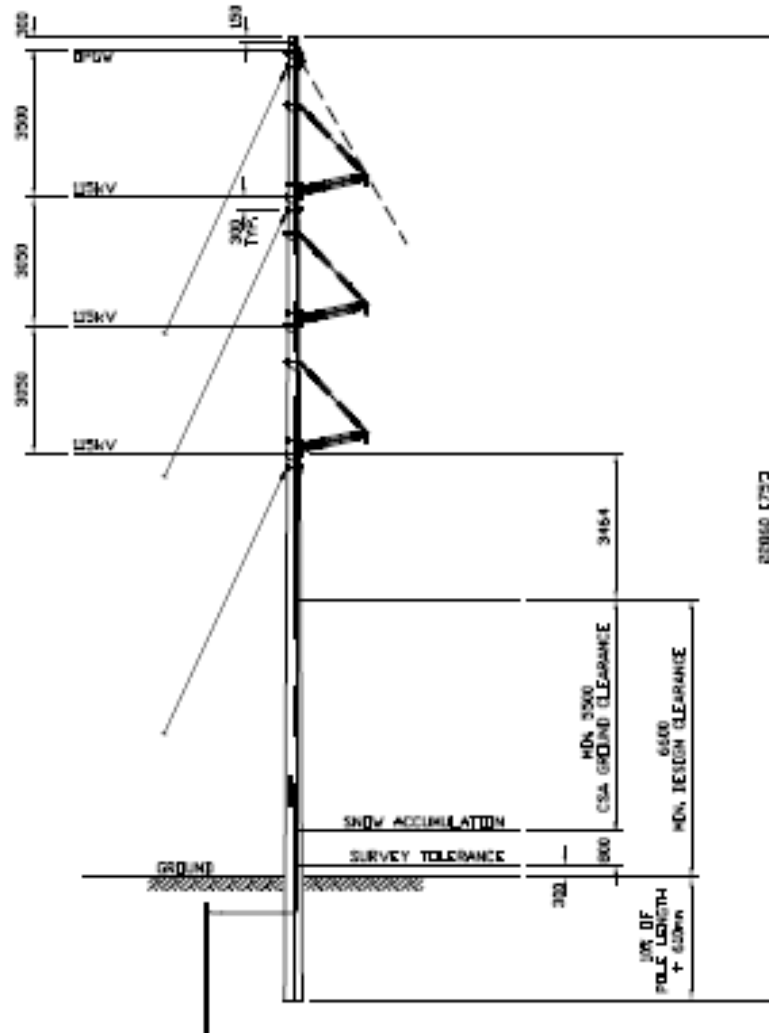


Northland Power Inc.
 Distribution Line Project Location
 Generalized Candidate
 Significant Natural Heritage / Waterbody Features **HATCH**

115kV Transmission Line – Structure Summary

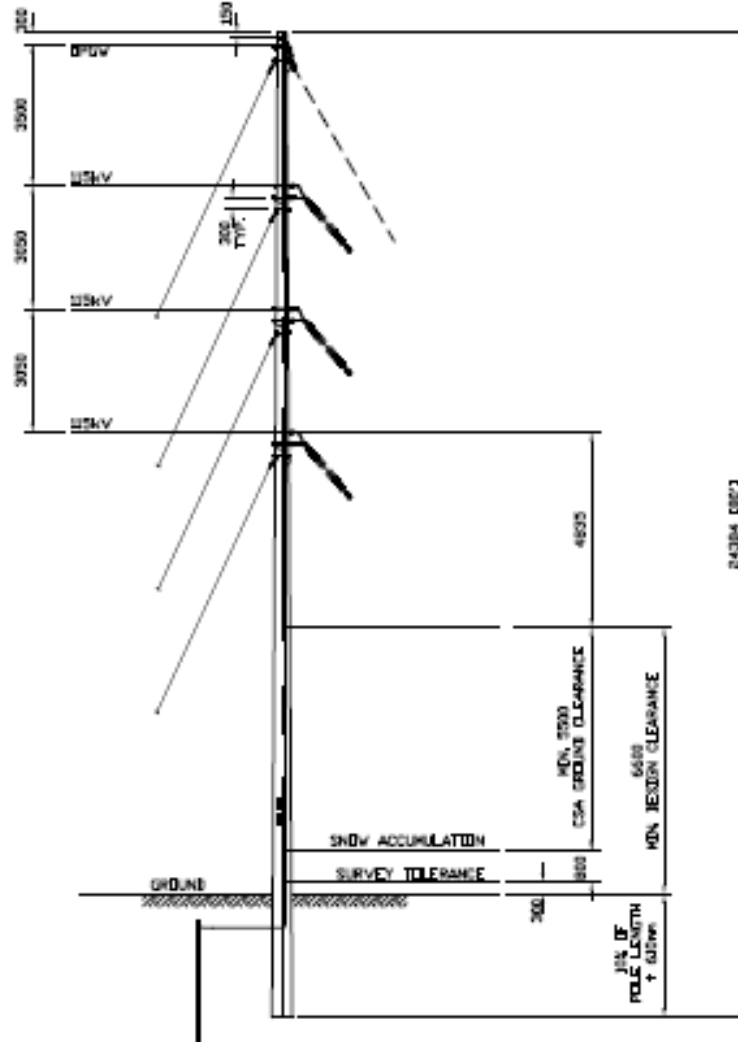


115kV Transmission Line – Design Option



1CCT 115kV TRANSMISSION LINE
LIGHT ANGLE (P - 15°) FRAMING

115kV Transmission Line – Design Option

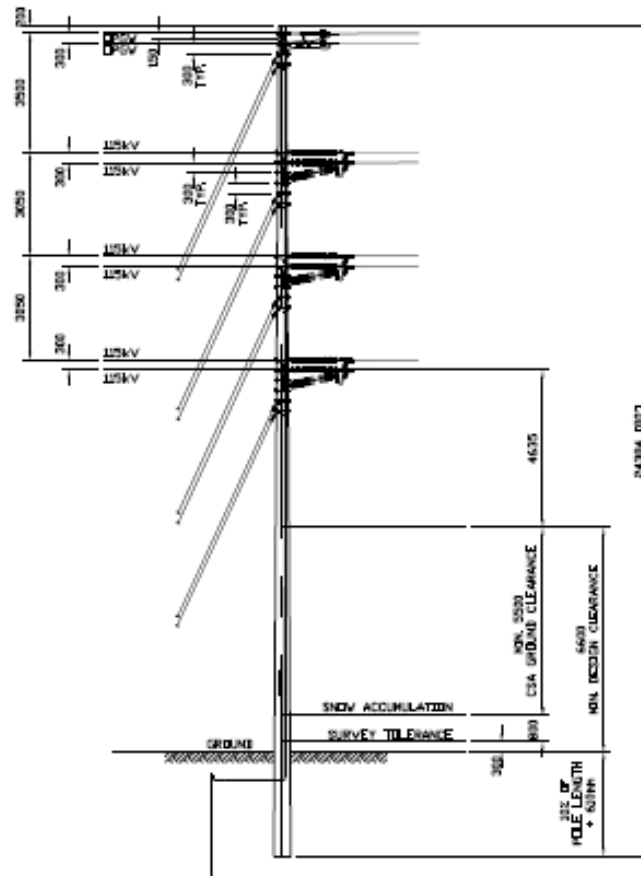


1CCT 115kV TRANSMISSION LINE
MEDIUM ANGLE (15 - 30°) FRAMING

115kV Transmission Line – Design Option

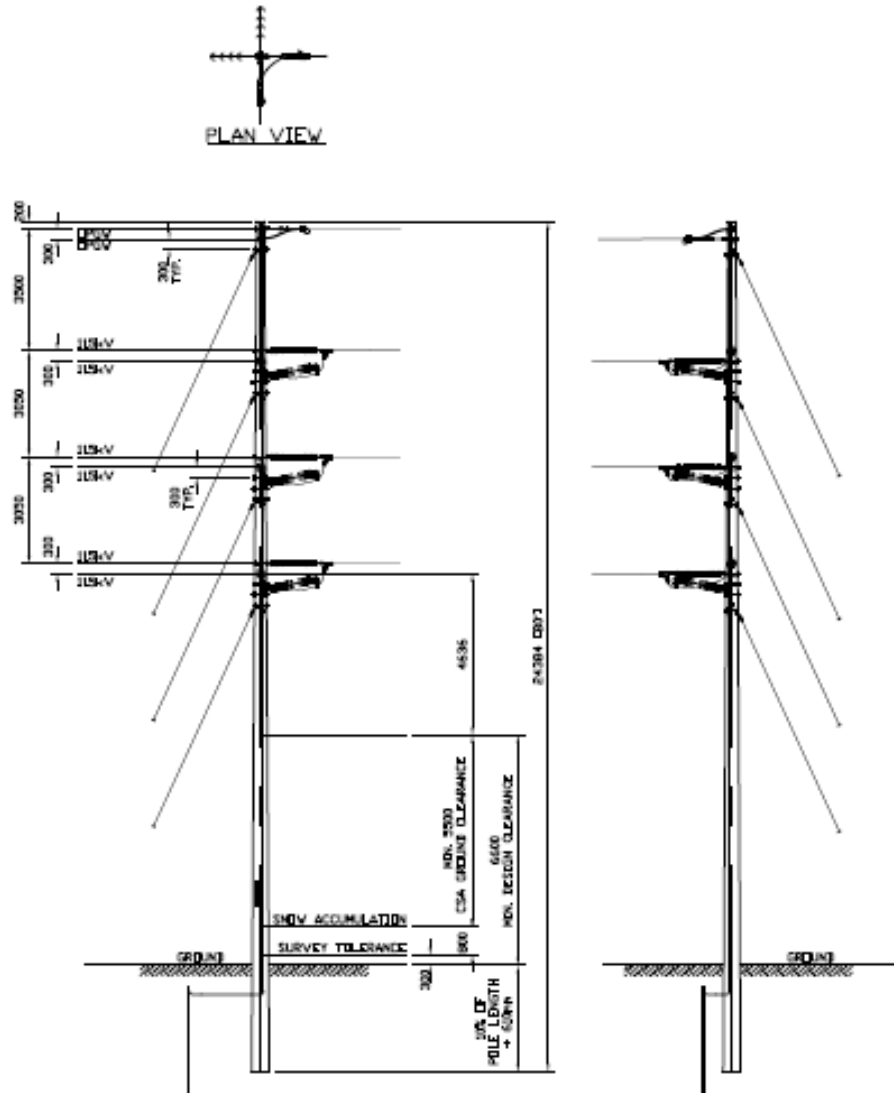


PLAN VIEW



ICCT 115kV TRANSMISSION LINE
MEDIUM ANGLE (30 - 60°) DEADEND FRAMING

115kV Transmission Line – Design Option

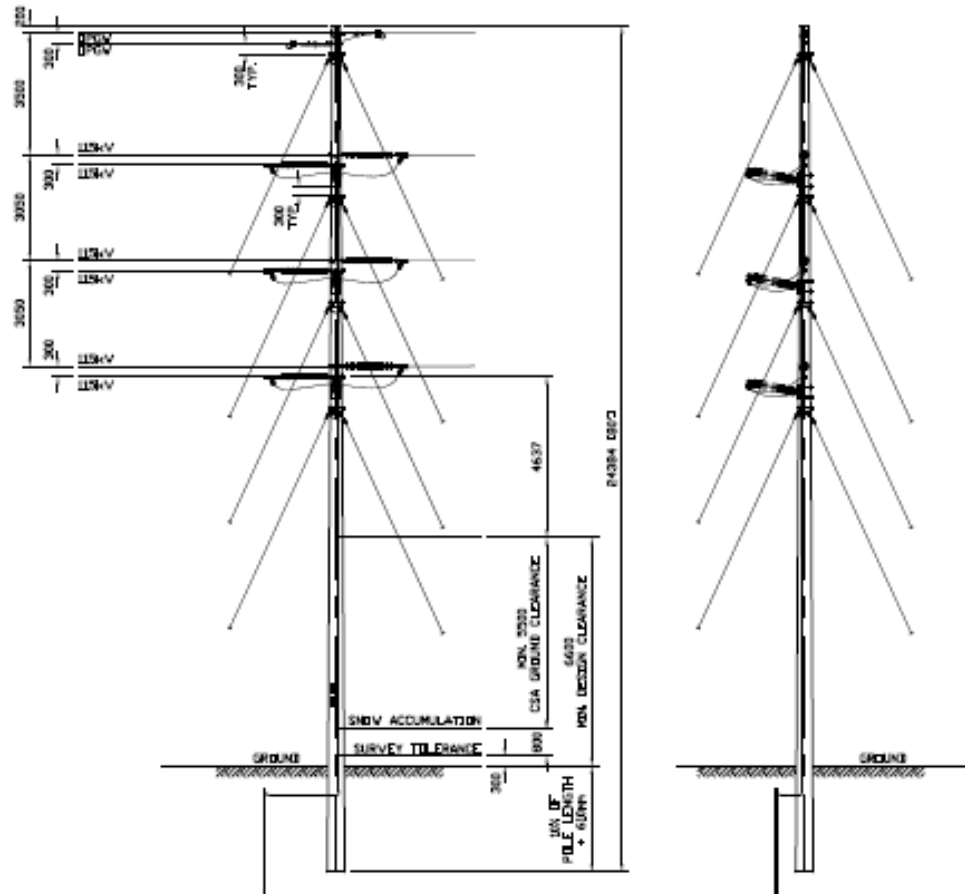


ICCT 115kV TRANSMISSION LINE
HEAVY ANGLE (60 - 90°) DEADEND FRAMING

115kV Transmission Line – Design Option



PLAN VIEW



LCCT 115kV TRANSMISSION LINE
DOUBLE DEADEND FRAMING

Northland

Next Steps



Next Steps

- A consultation report will be prepared documenting results of this Public meeting
- An application for a Renewable Energy Approval will be submitted to the Ministry of Environment
- A Notice of Environmental Registry Posting will be published
- A Decision Notice will be issued from the Ministry of Environment

**For more
information, please
visit
northlandpower.ca**

Questions?

www.northlandpower.ca

