


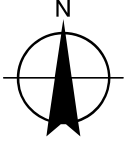


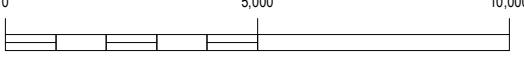
-  Turbine Location: Northland Power Grand Bend Project
-  Transformer Sub-Station | Switch Yard
-  Project Area

DATA SOURCES:
 1. Ministry of Natural Resources, © Queen's Printer for Ontario
 2. Natural Resources Canada © Her Majesty the Queen in Right of Canada

21 November 2012

N


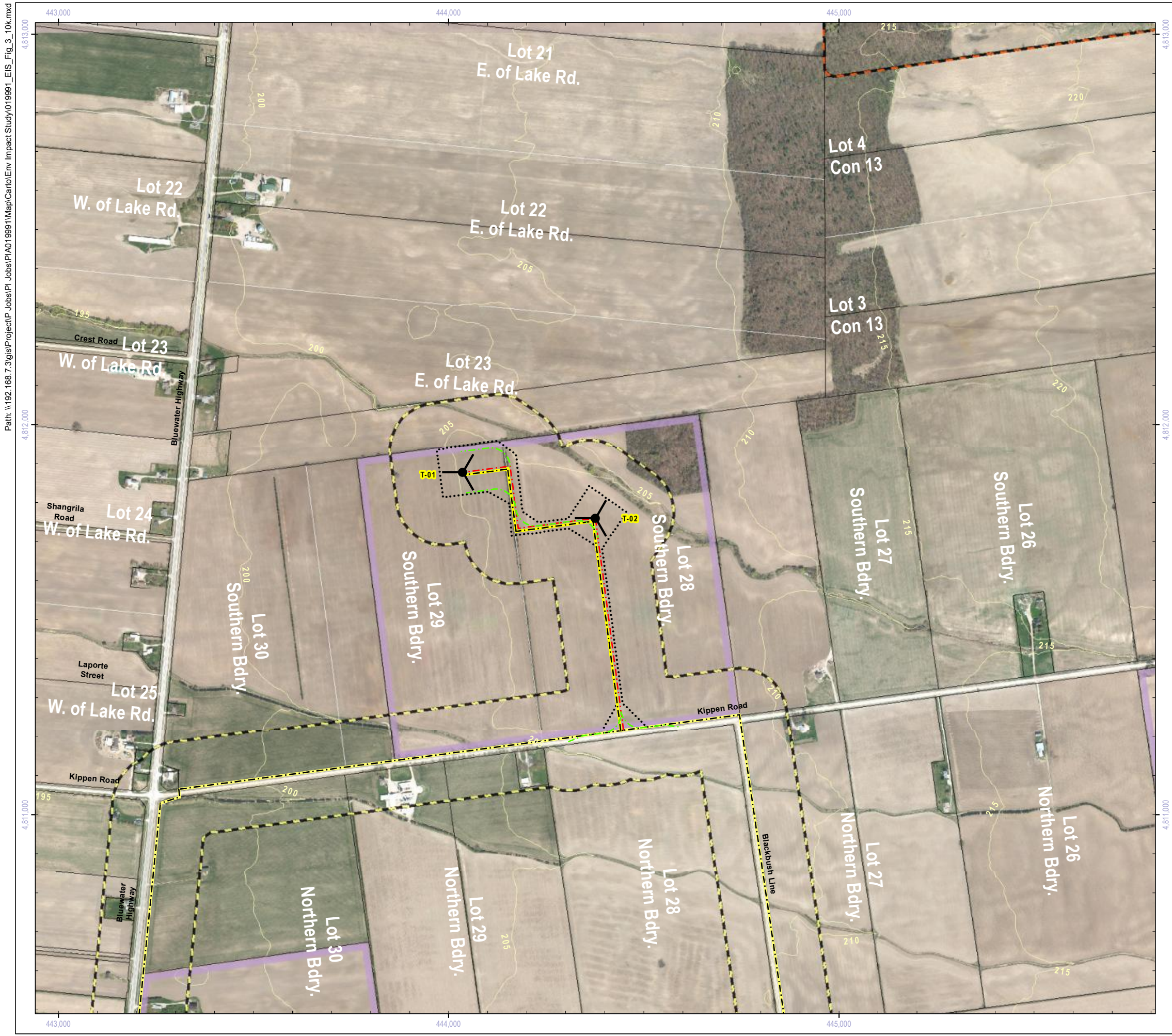
Projection: UTM Zone 17
Datum: NAD 83

0 5,000 10,000

 Meters



Title
 Grand Bend Wind Farm
 Grand Bend Wind Limited Partnership
 Environmental Impact Study
 Significant Valleylands, Woodlands, & Wetlands

Prepared	P. Stubbert	Checked	T. Radburn	Figure Number
Scale	1:150,000	Project	PIA019991	3



Project Infrastructure

	Wind Turbine Location		Participating Property
	Access Road & Collector Line		Access Road
	Access Road: For Construction (Temporary)		Collector Line
	Transmission Line		Existing Transmission Line: Overhead
	Area of Construction		Building / Transformer Sub-Station / Switching Yard
			Contour (5m Interval)

Significant Features

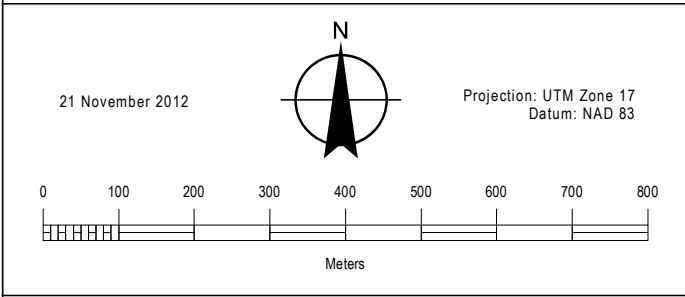
	Wetland Complex		120m From Project Location
	Valleyland		Study Area
	Significant Wetland		Ecoregion 6E - 7E Division
	Significant Woodland		

NOTES:

- Reference the Figure 1 Key Map for location in the overall project area.

DATA SOURCES:

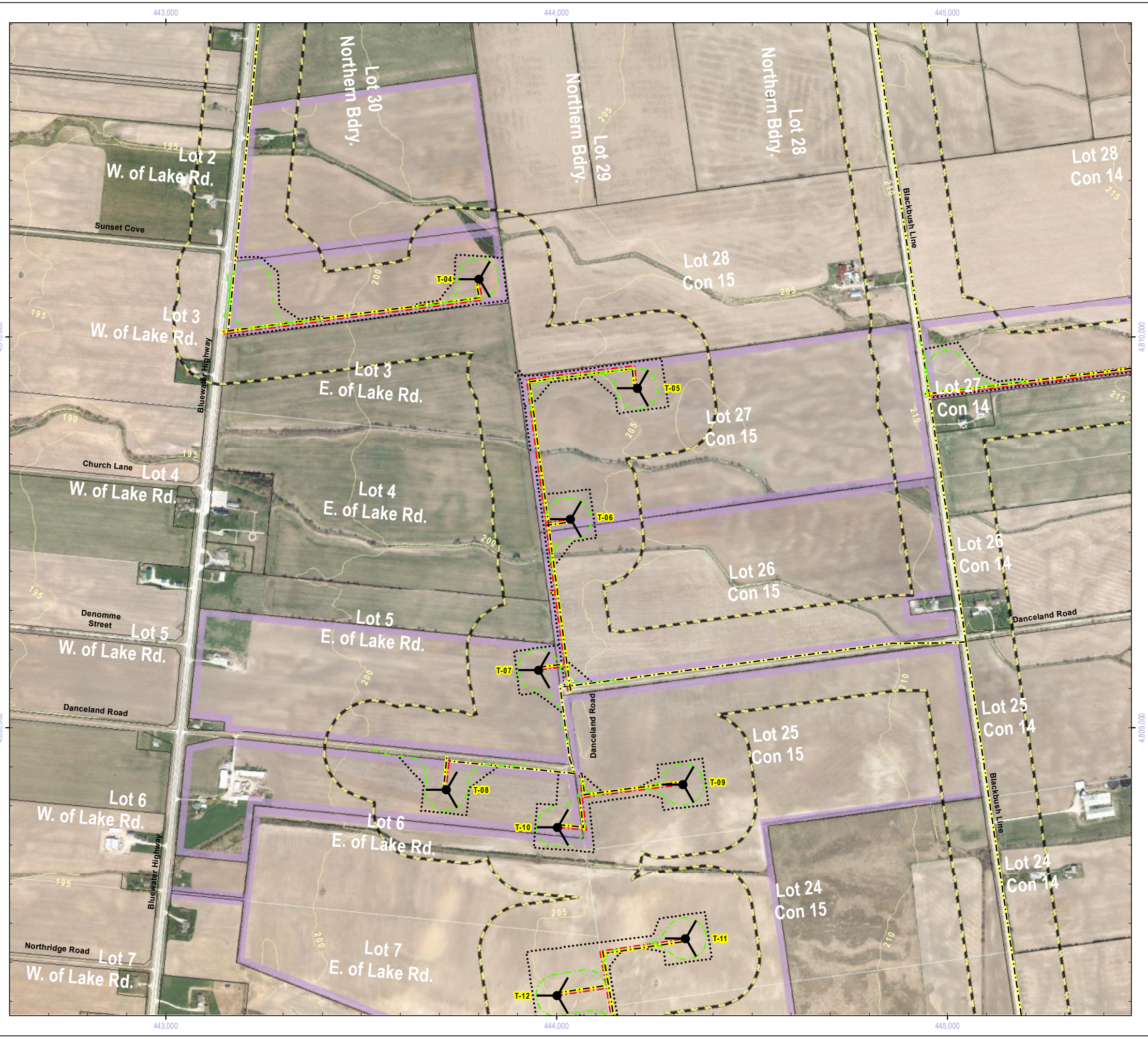
- County of Huron (including Imagery: 2010)
- Ministry of Natural Resources, © Queen's Printer for Ontario
- Natural Resources Canada © Her Majesty the Queen in Right of Canada



Title

**Grand Bend Wind Farm
Grand Bend Wind Limited Partnership
Environmental Impact Study
Significant Valleylands, Woodlands, & Wetlands**

Prepared	P. Stubbert	Checked	T. Radburn	Figure Number	3a
Scale	1:10,000	Project	PIA019991		



Project Infrastructure

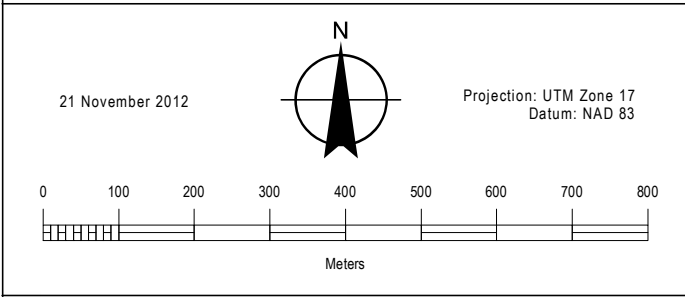
	Wind Turbine Location		Participating Property
	Access Road & Collector Line		Access Road
	Access Road: For Construction (Temporary)		Collector Line
	Transmission Line		Existing Transmission Line: Overhead
	Area of Construction		Building / Transformer Sub-Station / Switching Yard
			Contour (5m Interval)

Significant Features

	Wetland Complex		120m From Project Location
	Valleyland		Study Area
	Significant Wetland		Ecoregion 6E - 7E Division
	Significant Woodland		

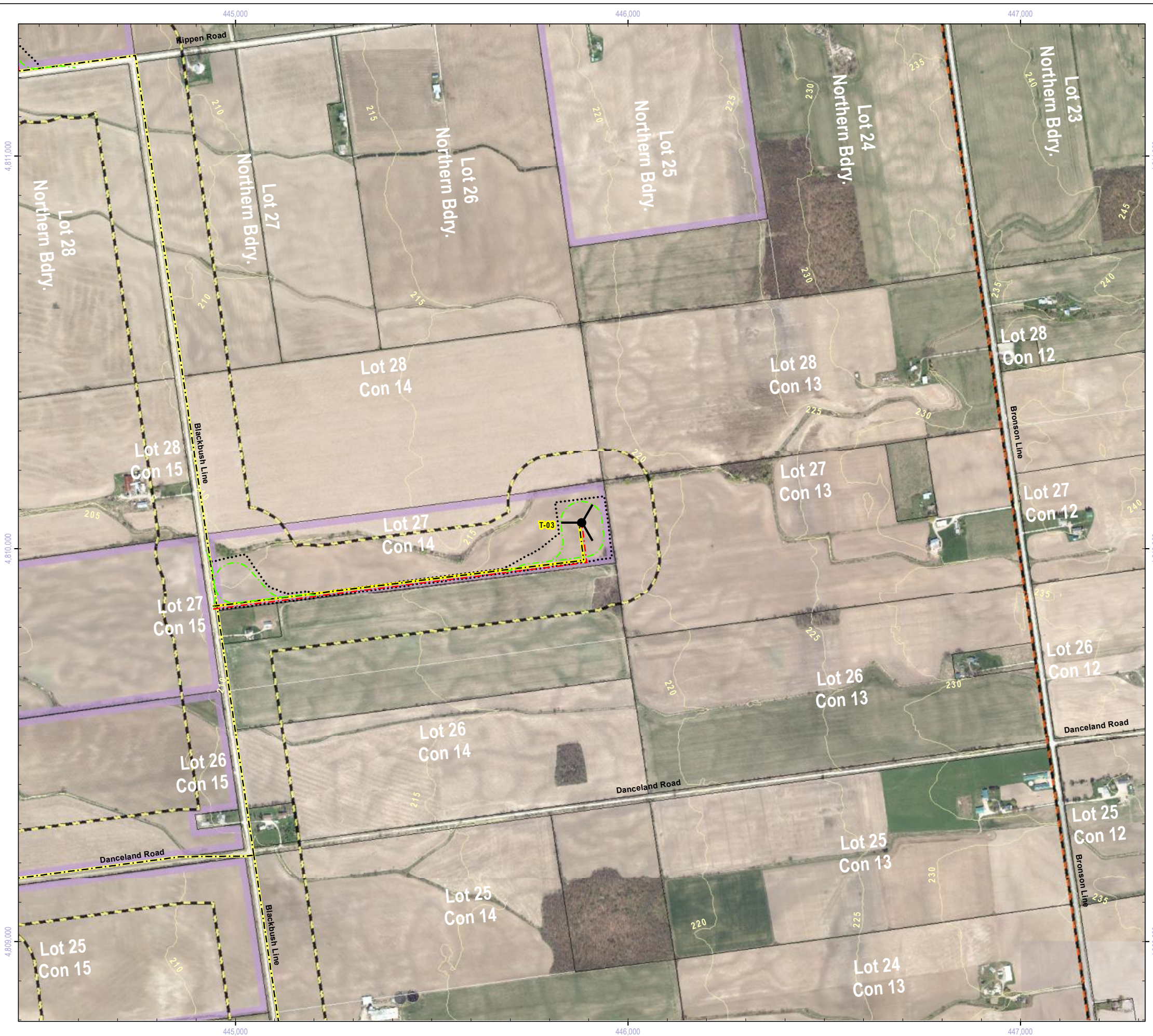
NOTES:
 1. Reference the Figure 1 Key Map for location in the overall project area.

DATA SOURCES:
 1. County of Huron (including Imagery: 2010)
 2. Ministry of Natural Resources, © Queen's Printer for Ontario
 3. Natural Resources Canada © Her Majesty the Queen in Right of Canada



Title
Grand Bend Wind Farm
Grand Bend Wind Limited Partnership
Environmental Impact Study
Significant Valleylands, Woodlands, & Wetlands

Prepared	P. Stubbert	Checked	T. Radburn	Figure Number	3b
Scale	1:10,000	Project	PIA019991		



Project Infrastructure

	Wind Turbine Location		Participating Property
	Access Road & Collector Line		Access Road
	Access Road: For Construction (Temporary)		Collector Line
	Transmission Line		Existing Transmission Line: Overhead
	Area of Construction		Building / Transformer Sub-Station / Switching Yard
			Contour (5m Interval)

Significant Features

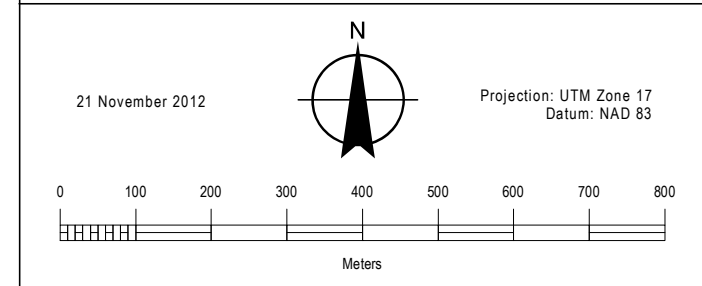
	Wetland Complex		120m From Project Location
	Valleyland		Study Area
	Significant Wetland		Ecoregion 6E - 7E Division
	Significant Woodland		

NOTES:

- Reference the Figure 1 Key Map for location in the overall project area.

DATA SOURCES:

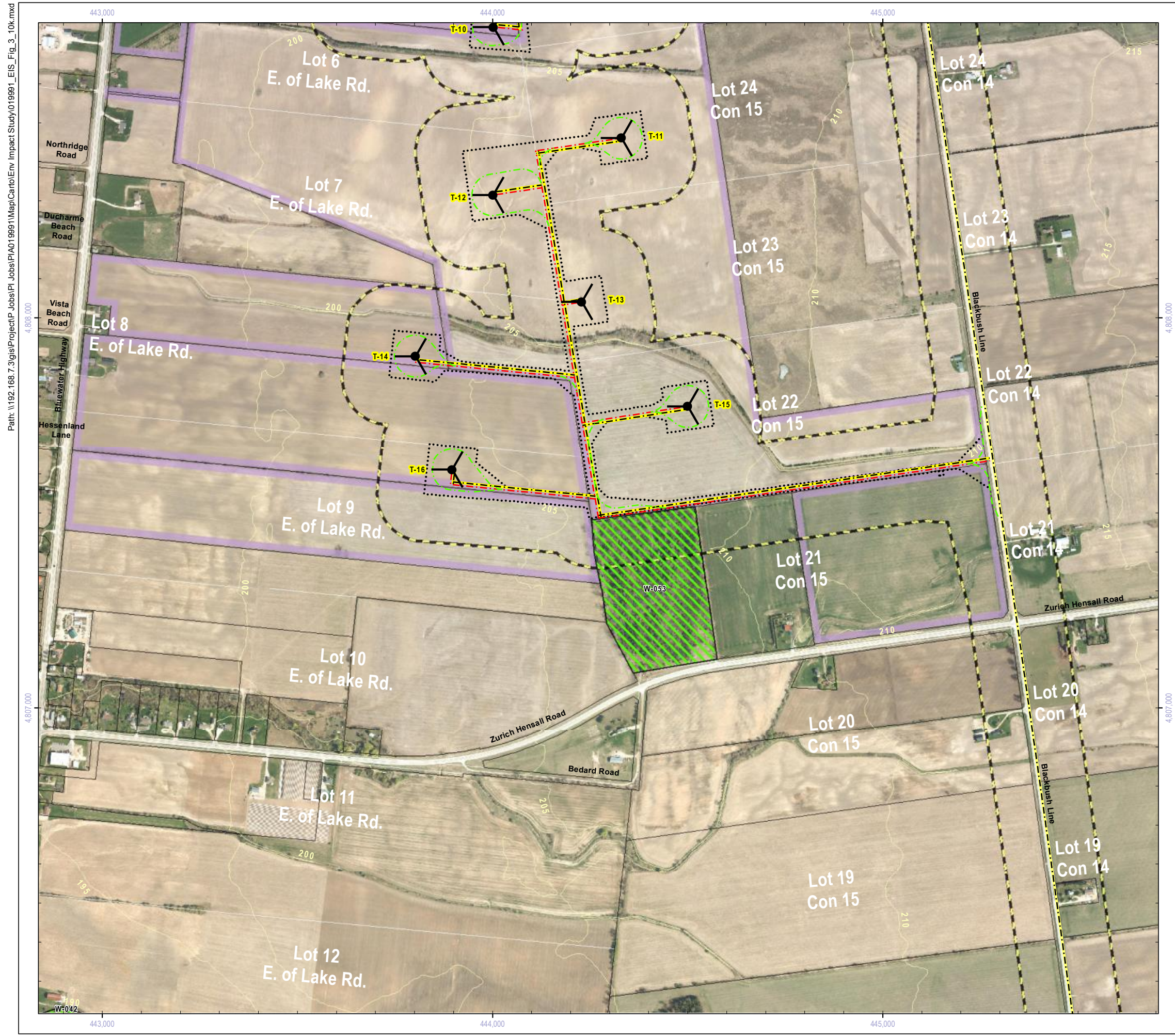
- County of Huron (including Imagery: 2010)
- Ministry of Natural Resources, © Queen's Printer for Ontario
- Natural Resources Canada © Her Majesty the Queen in Right of Canada



Title

**Grand Bend Wind Farm
Grand Bend Wind Limited Partnership
Environmental Impact Study
Significant Valleylands, Woodlands, & Wetlands**

Prepared	P. Stubbert	Checked	T. Radburn	Figure Number	3c
Scale	1:10,000	Project	PIA019991		



Project Infrastructure

	Wind Turbine Location		Participating Property
	Access Road & Collector Line		Access Road
	Access Road: For Construction (Temporary)		Collector Line
	Transmission Line		Existing Transmission Line: Overhead
	Area of Construction		Building / Transformer Sub-Station / Switching Yard
			Contour (5m Interval)

Significant Features

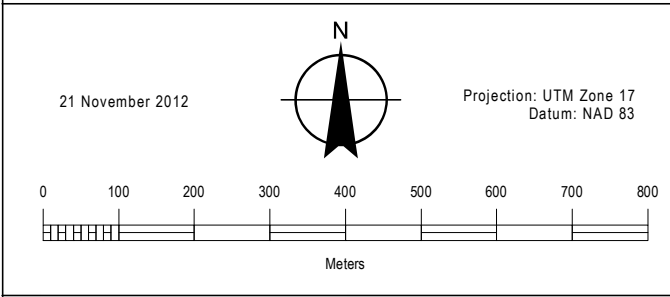
	Wetland Complex		120m From Project Location
	Valleyland		Study Area
	Significant Wetland		Ecoregion 6E - 7E Division
	Significant Woodland		

NOTES:

- Reference the Figure 1 Key Map for location in the overall project area.

DATA SOURCES:

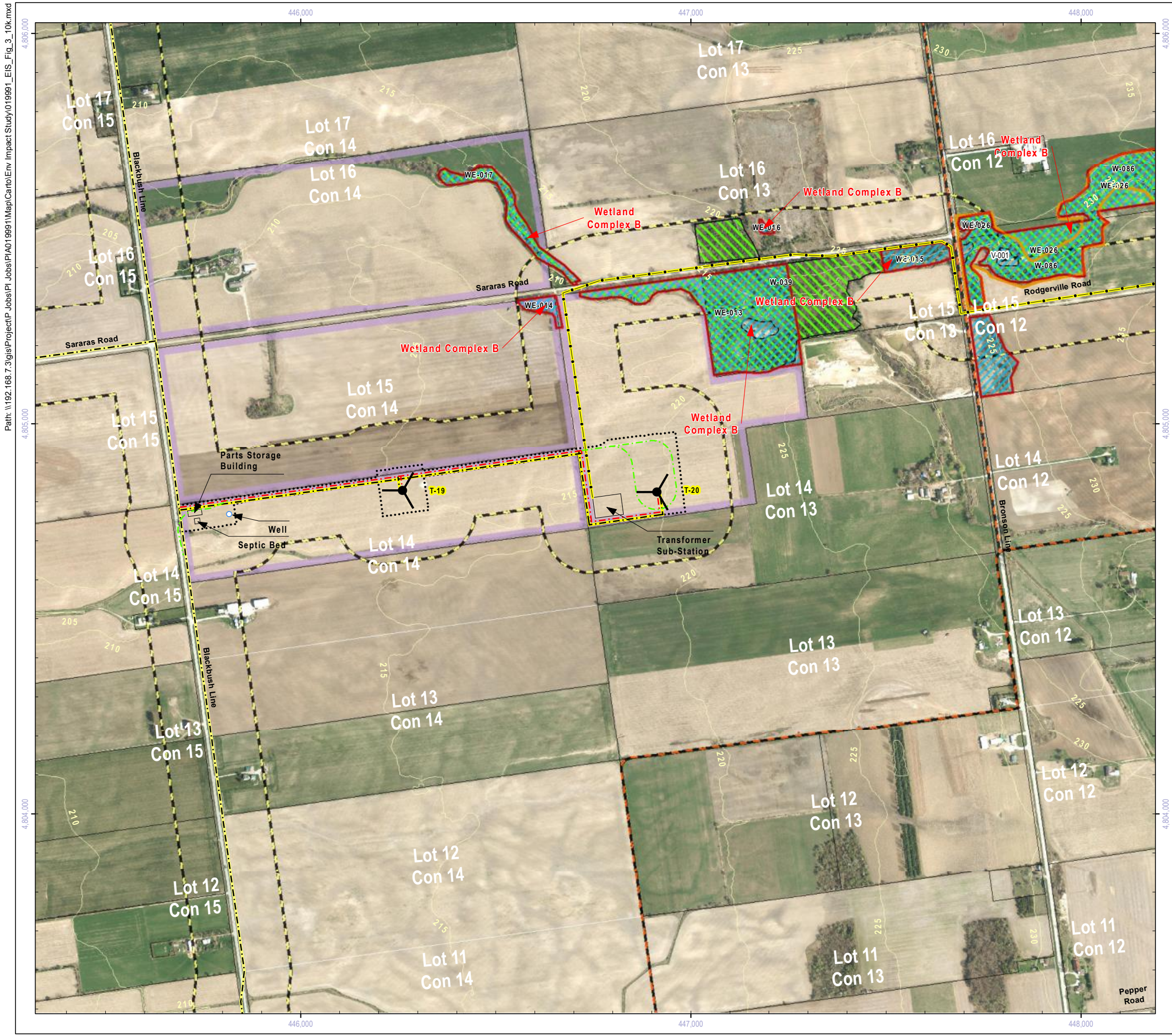
- County of Huron (including Imagery: 2010)
- Ministry of Natural Resources, © Queen's Printer for Ontario
- Natural Resources Canada © Her Majesty the Queen in Right of Canada



Title

**Grand Bend Wind Farm
Grand Bend Wind Limited Partnership
Environmental Impact Study
Significant Valleylands, Woodlands, & Wetlands**

Prepared	P. Stubbert	Checked	T. Radburn	Figure Number	3d
Scale	1:10,000	Project	PIA019991		



Project Infrastructure

	Wind Turbine Location		Participating Property
	Access Road & Collector Line		Access Road
	Access Road: For Construction (Temporary)		Collector Line
	Transmission Line		Existing Transmission Line: Overhead
	Area of Construction		Building / Transformer Sub-Station / Switching Yard
			Contour (5m Interval)

Significant Features

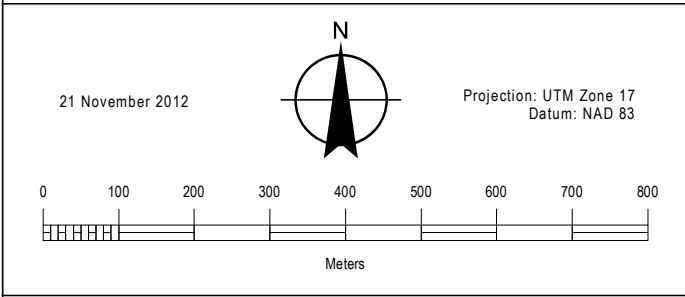
	Wetland Complex		120m From Project Location
	Valleyland		Study Area
	Significant Wetland		Ecoregion 6E - 7E Division
	Significant Woodland		

NOTES:

- Reference the Figure 1 Key Map for location in the overall project area.

DATA SOURCES:

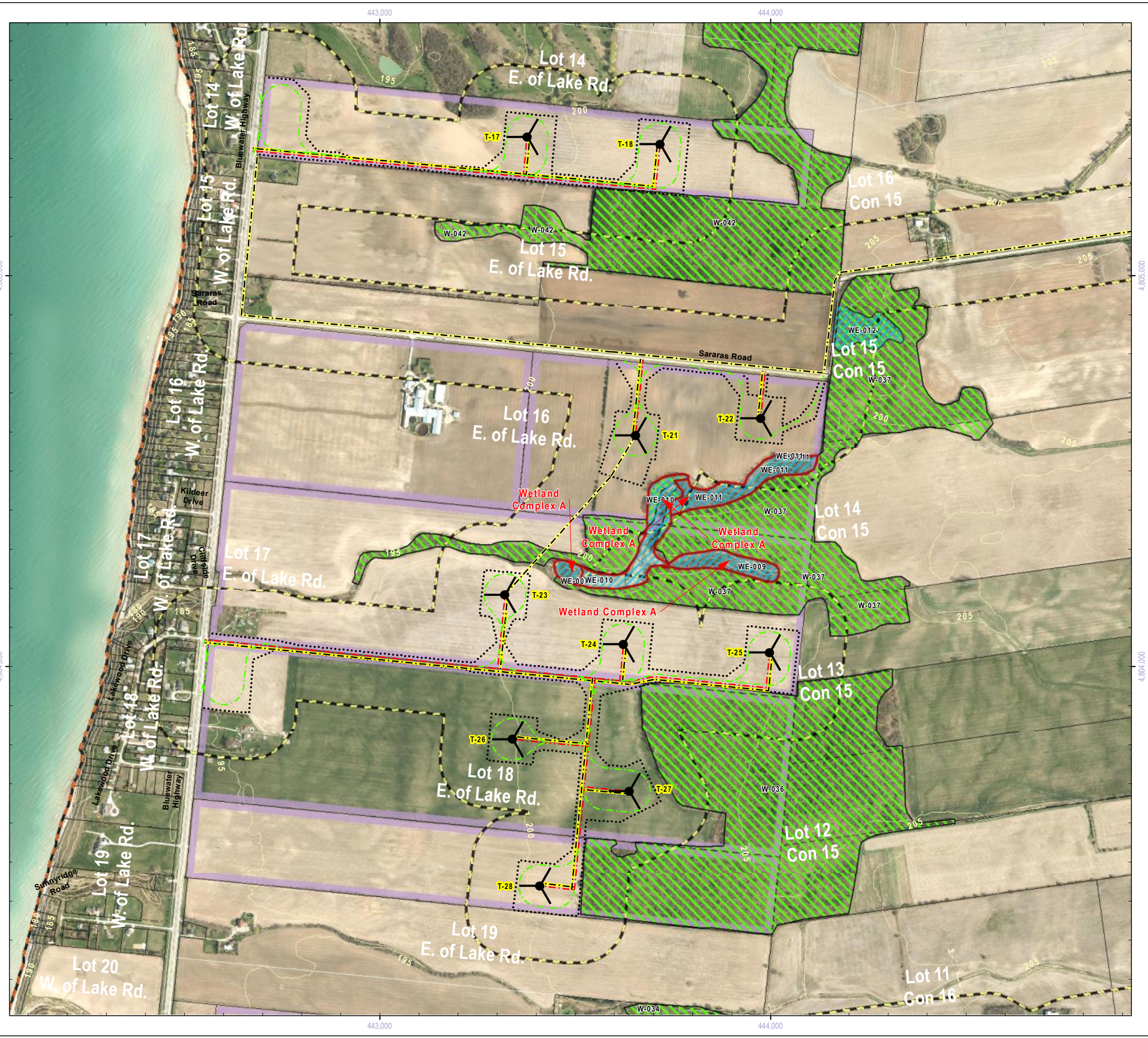
- County of Huron (including Imagery: 2010)
- Ministry of Natural Resources, © Queen's Printer for Ontario
- Natural Resources Canada © Her Majesty the Queen in Right of Canada



Title

**Grand Bend Wind Farm
Grand Bend Wind Limited Partnership
Environmental Impact Study
Significant Valleylands, Woodlands, & Wetlands**

Prepared	P. Stubbert	Checked	T. Radburn	Figure Number	3e
Scale	1:10,000	Project	PIA019991		



Project Infrastructure

	Wind Turbine Location		Participating Property
	Access Road & Collector Line		Access Road
	Access Road: For Construction (Temporary)		Collector Line
	Transmission Line		Existing Transmission Line: Overhead
	Area of Construction		Building / Transformer Sub-Station / Switching Yard
			Contour (5m Interval)

Significant Features

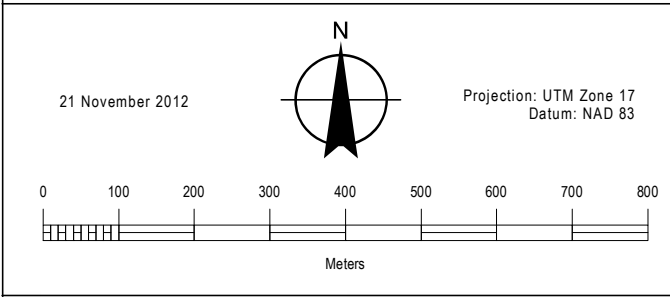
	Wetland Complex		120m From Project Location
	Valleyland		Study Area
	Significant Wetland		Ecoregion 6E - 7E Division
	Significant Woodland		

NOTES:

- Reference the Figure 1 Key Map for location in the overall project area.

DATA SOURCES:

- County of Huron (including Imagery: 2010)
- Ministry of Natural Resources, © Queen's Printer for Ontario
- Natural Resources Canada © Her Majesty the Queen in Right of Canada



Title

**Grand Bend Wind Farm
Grand Bend Wind Limited Partnership
Environmental Impact Study
Significant Valleylands, Woodlands, & Wetlands**

Prepared	P. Stubbert	Checked	T. Radburn	Figure Number
Scale	1:10,000	Project	PIA019991	3f



Project Infrastructure

	Wind Turbine Location		Participating Property
	Access Road & Collector Line		Access Road
	Access Road: For Construction (Temporary)		Collector Line
	Transmission Line		Existing Transmission Line: Overhead
	Area of Construction		Building / Transformer Sub-Station / Switching Yard
			Contour (5m Interval)

Significant Features

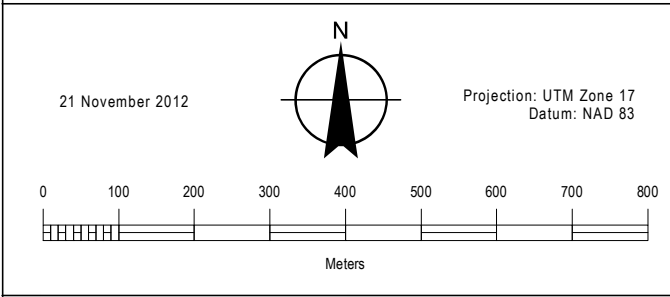
	Wetland Complex		120m From Project Location
	Valleyland		Study Area
	Significant Wetland		Ecoregion 6E - 7E Division
	Significant Woodland		

NOTES:

- Reference the Figure 1 Key Map for location in the overall project area.

DATA SOURCES:

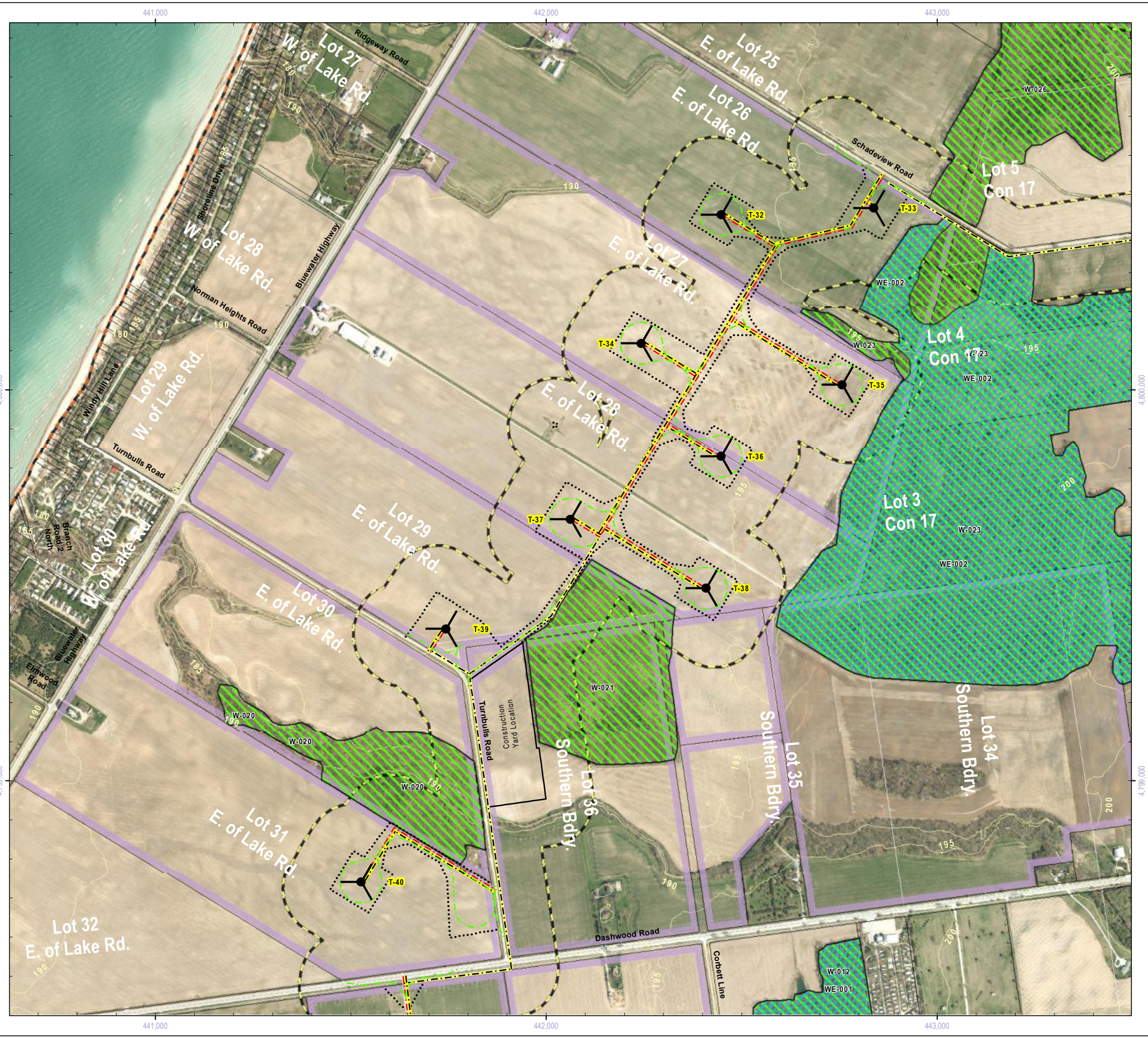
- County of Huron (including Imagery: 2010)
- Ministry of Natural Resources, © Queen's Printer for Ontario
- Natural Resources Canada © Her Majesty the Queen in Right of Canada



Title

**Grand Bend Wind Farm
Grand Bend Wind Limited Partnership
Environmental Impact Study
Significant Valleylands, Woodlands, & Wetlands**

Prepared	P. Stubbert	Checked	T. Radburn	Figure Number
Scale	1:10,000	Project	PIA019991	3g



Project Infrastructure

	Wind Turbine Location		Participating Property
	Access Road & Collector Line		Access Road
	Access Road: For Construction (Temporary)		Collector Line
	Transmission Line		Existing Transmission Line: Overhead
	Area of Construction		Building / Transformer Sub-Station / Switching Yard
			Contour (5m Interval)

Significant Features

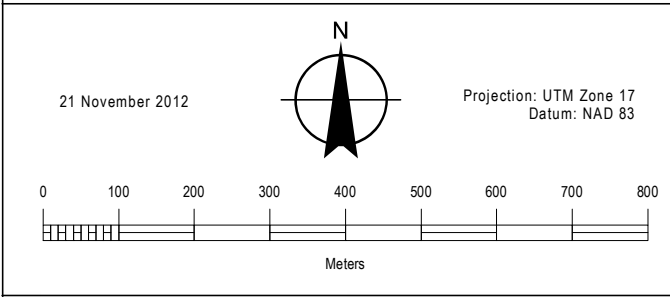
	Wetland Complex		120m From Project Location
	Valleyland		Study Area
	Significant Wetland		Ecoregion 6E - 7E Division
	Significant Woodland		

NOTES:

- Reference the Figure 1 Key Map for location in the overall project area.

DATA SOURCES:

- County of Huron (including Imagery: 2010)
- Ministry of Natural Resources, © Queen's Printer for Ontario
- Natural Resources Canada © Her Majesty the Queen in Right of Canada



Title

**Grand Bend Wind Farm
Grand Bend Wind Limited Partnership
Environmental Impact Study
Significant Valleylands, Woodlands, & Wetlands**

Prepared	P. Stubbert	Checked	T. Radburn	Figure Number
Scale	1:10,000	Project	PIA019991	3h



Project Infrastructure

	Wind Turbine Location		Participating Property
	Access Road & Collector Line		Access Road
	Access Road: For Construction (Temporary)		Collector Line
	Transmission Line		Existing Transmission Line: Overhead
	Area of Construction		Building / Transformer Sub-Station / Switching Yard
			Contour (5m Interval)

Significant Features

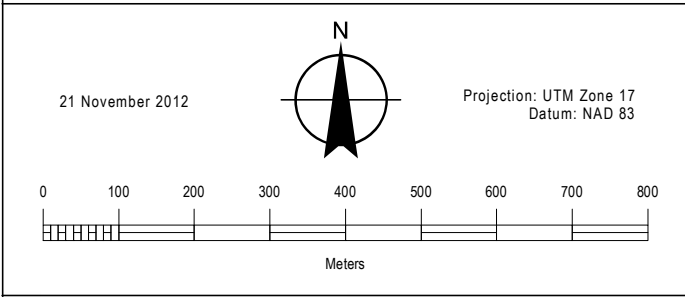
	Wetland Complex		120m From Project Location
	Valleyland		Study Area
	Significant Wetland		Ecoregion 6E - 7E Division
	Significant Woodland		

NOTES:

- Reference the Figure 1 Key Map for location in the overall project area.

DATA SOURCES:

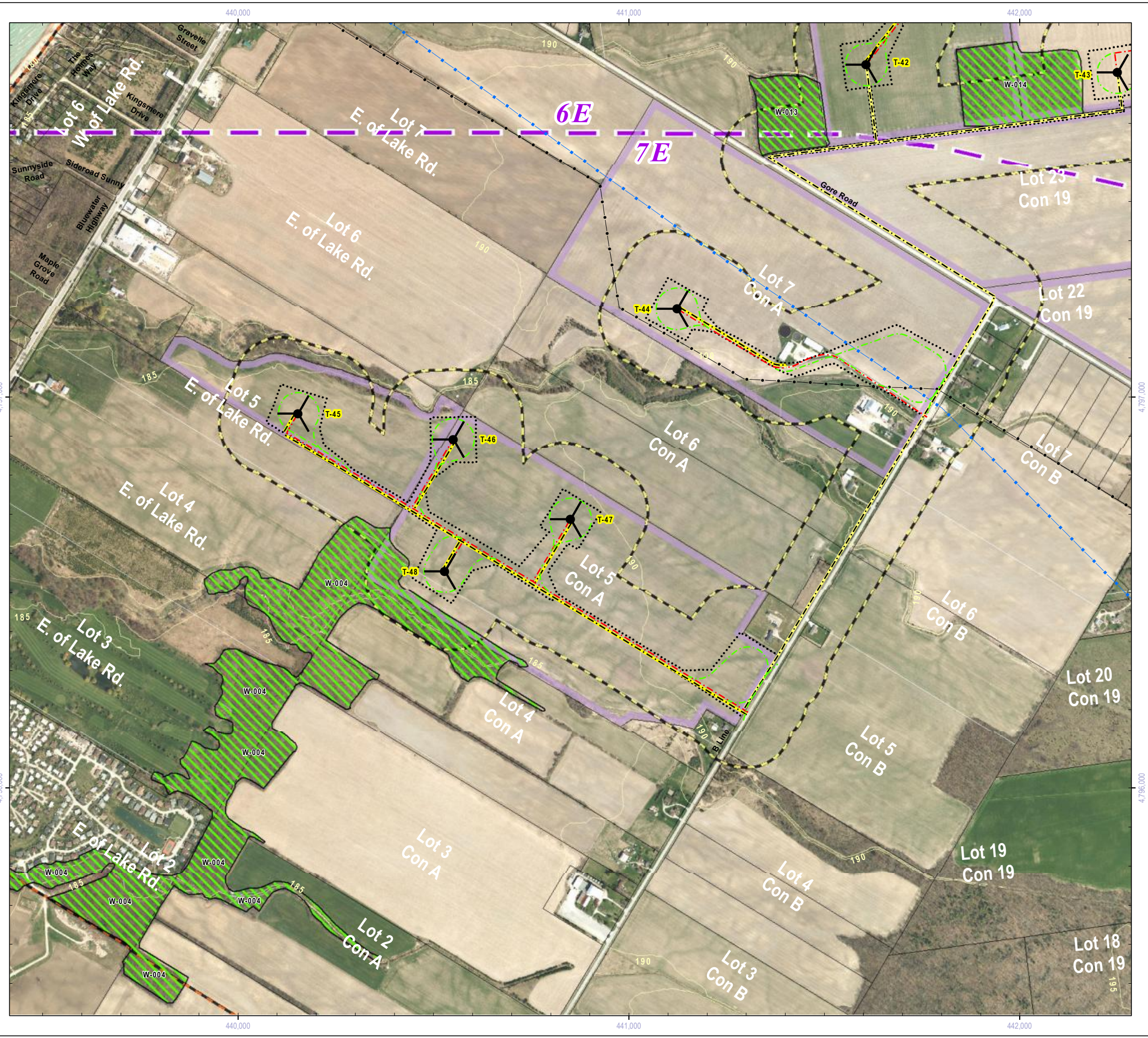
- County of Huron (including Imagery: 2010)
- Ministry of Natural Resources, © Queen's Printer for Ontario
- Natural Resources Canada © Her Majesty the Queen in Right of Canada



Title

**Grand Bend Wind Farm
Grand Bend Wind Limited Partnership
Environmental Impact Study
Significant Valleylands, Woodlands, & Wetlands**

Prepared	P. Stubbert	Checked	T. Radburn	Figure Number	3i
Scale	1:10,000	Project	PIA019991		



Project Infrastructure

	Wind Turbine Location		Participating Property
	Access Road & Collector Line		Access Road
	Access Road: For Construction (Temporary)		Collector Line
	Transmission Line		Existing Transmission Line: Overhead
	Area of Construction		Building / Transformer Sub-Station / Switching Yard
			Contour (5m Interval)

Significant Features

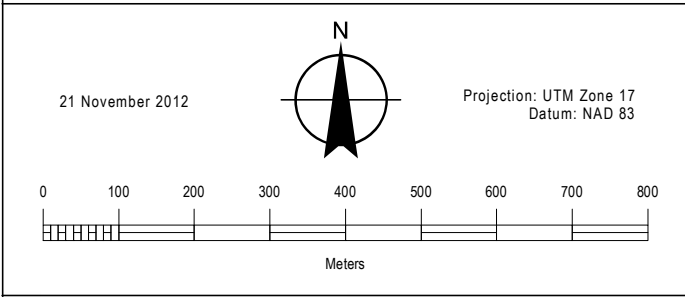
	Wetland Complex		120m From Project Location
	Valleyland		Study Area
	Significant Wetland		Ecoregion 6E - 7E Division
	Significant Woodland		

NOTES:

- Reference the Figure 1 Key Map for location in the overall project area.

DATA SOURCES:

- County of Huron (including Imagery: 2010)
- Ministry of Natural Resources, © Queen's Printer for Ontario
- Natural Resources Canada © Her Majesty the Queen in Right of Canada



Title

**Grand Bend Wind Farm
Grand Bend Wind Limited Partnership
Environmental Impact Study
Significant Valleylands, Woodlands, & Wetlands**

Prepared	P. Stubbert	Checked	T. Radburn	Figure Number	3j
Scale	1:10,000	Project	PIA019991		



Project Infrastructure

	Wind Turbine Location		Participating Property
	Access Road & Collector Line		Access Road
	Access Road: For Construction (Temporary)		Collector Line
	Transmission Line		Existing Transmission Line: Overhead
	Area of Construction		Building / Transformer Sub-Station / Switching Yard
			Contour (5m Interval)

Significant Features

	Wetland Complex		120m From Project Location
	Valleyland		Study Area
	Significant Wetland		Ecoregion 6E - 7E Division
	Significant Woodland		

NOTES:

- Reference the Figure 1 Key Map for location in the overall project area.

DATA SOURCES:

- County of Huron (including Imagery: 2010)
- Ministry of Natural Resources, © Queen's Printer for Ontario
- Natural Resources Canada © Her Majesty the Queen in Right of Canada

21 November 2012

Projection: UTM Zone 17
Datum: NAD 83

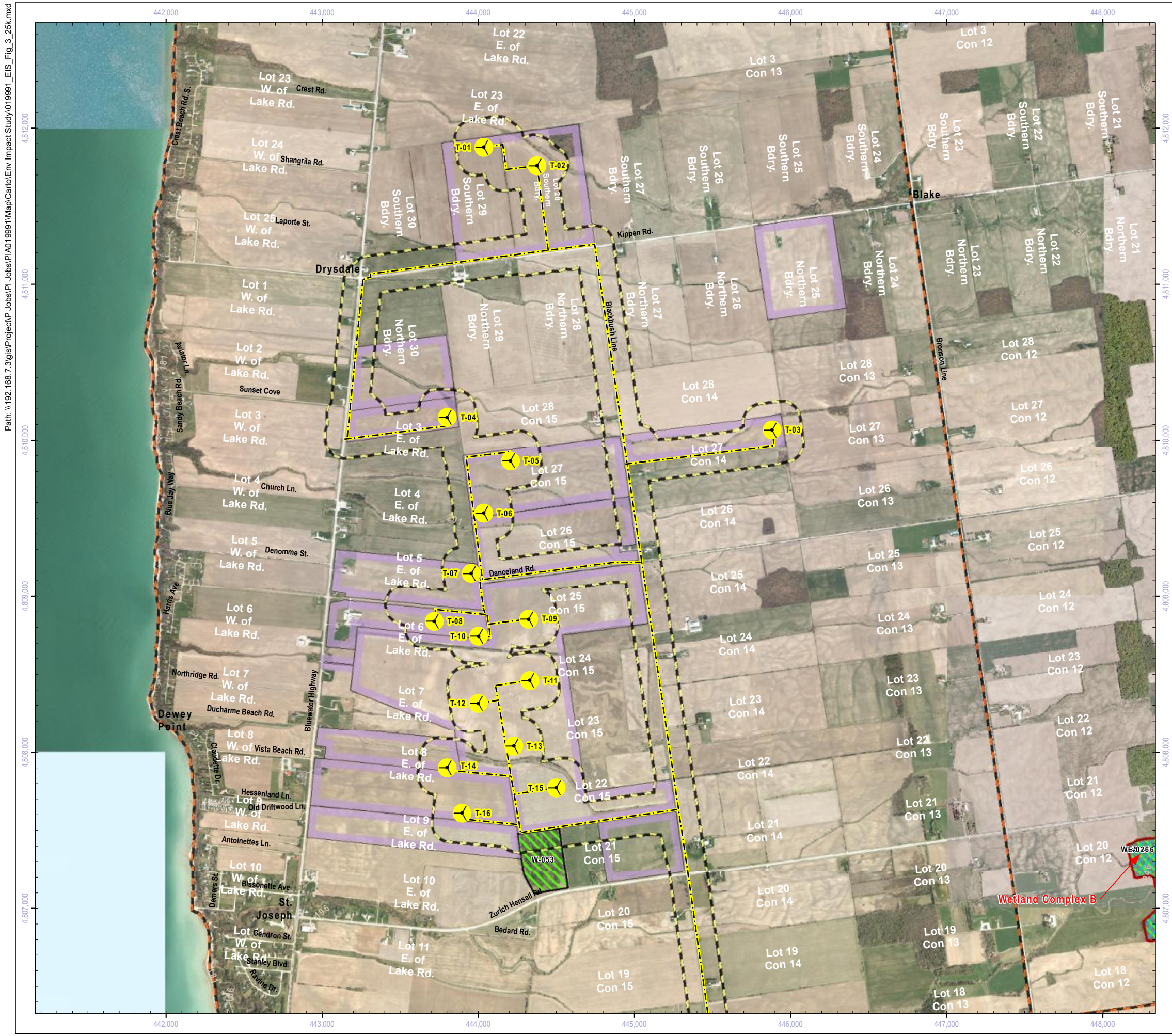
0 100 200 300 400 500 600 700 800
Meters

NEEGAN BURNSIDE

Title

**Grand Bend Wind Farm
Grand Bend Wind Limited Partnership
Environmental Impact Study
Significant Valleylands, Woodlands, & Wetlands**

Prepared	P. Stubbert	Checked	T. Radburn	Figure Number	3k
Scale	1:10,000	Project	PIA019991		



Project Infrastructure

- Wind Turbine Location
- Collector Line
- Transmission Line
- Transformer Sub-Station or Switch Yard

Significant Features

- Wetland Complex
- Valleyland
- Significant Wetland
- Significant Woodland
- 120m From Project Location
- Study Area
- Ecoregion 6E - 7E Division

NOTES:

- Reference the Figure 1 Key Map for location in the overall project area.

DATA SOURCES:

- County of Huron (including Imagery: 2010)
- Ministry of Natural Resources, © Queen's Printer for Ontario
- Natural Resources Canada © Her Majesty the Queen in Right of Canada

21 November 2012

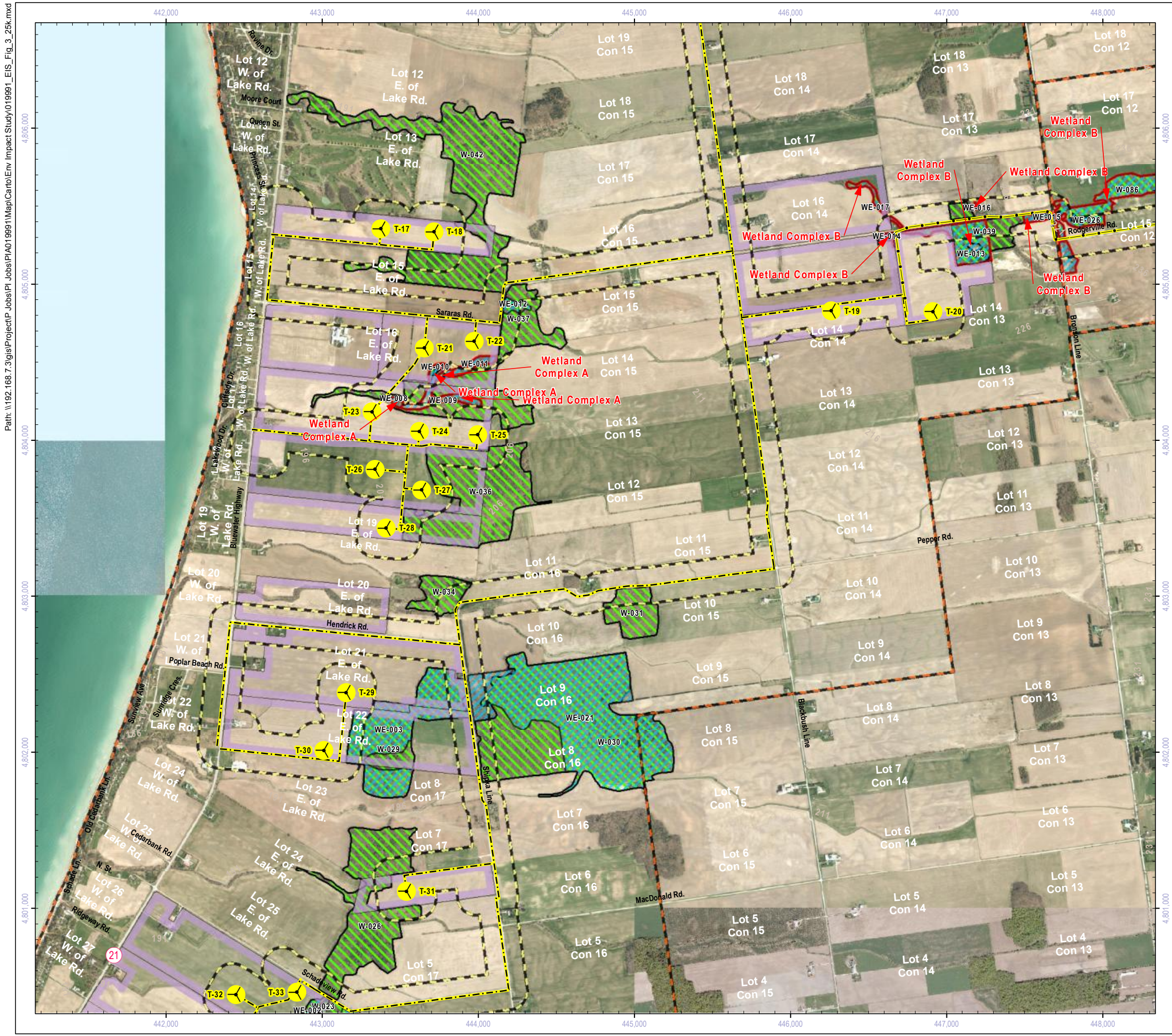
Projection: UTM Zone 17
Datum: NAD 83



Title

**Grand Bend Wind Farm
Grand Bend Wind Limited Partnership
Environmental Impact Study
Significant Valleylands, Woodlands, & Wetlands**

Prepared	P. Stubbert	Checked	T. Radburn	Figure Number
Scale	1:25,000	Project	PIA019991	31



Project Infrastructure

- Wind Turbine Location
- Collector Line
- Transmission Line
- Transformer Sub-Station or Switch Yard

Significant Features

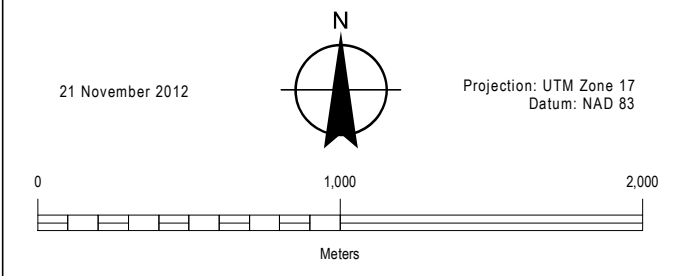
- Wetland Complex
- Valleyland
- Significant Wetland
- Significant Woodland
- 120m From Project Location
- Study Area
- Ecoregion 6E - 7E Division

NOTES:

- Reference the Figure 1 Key Map for location in the overall project area.

DATA SOURCES:

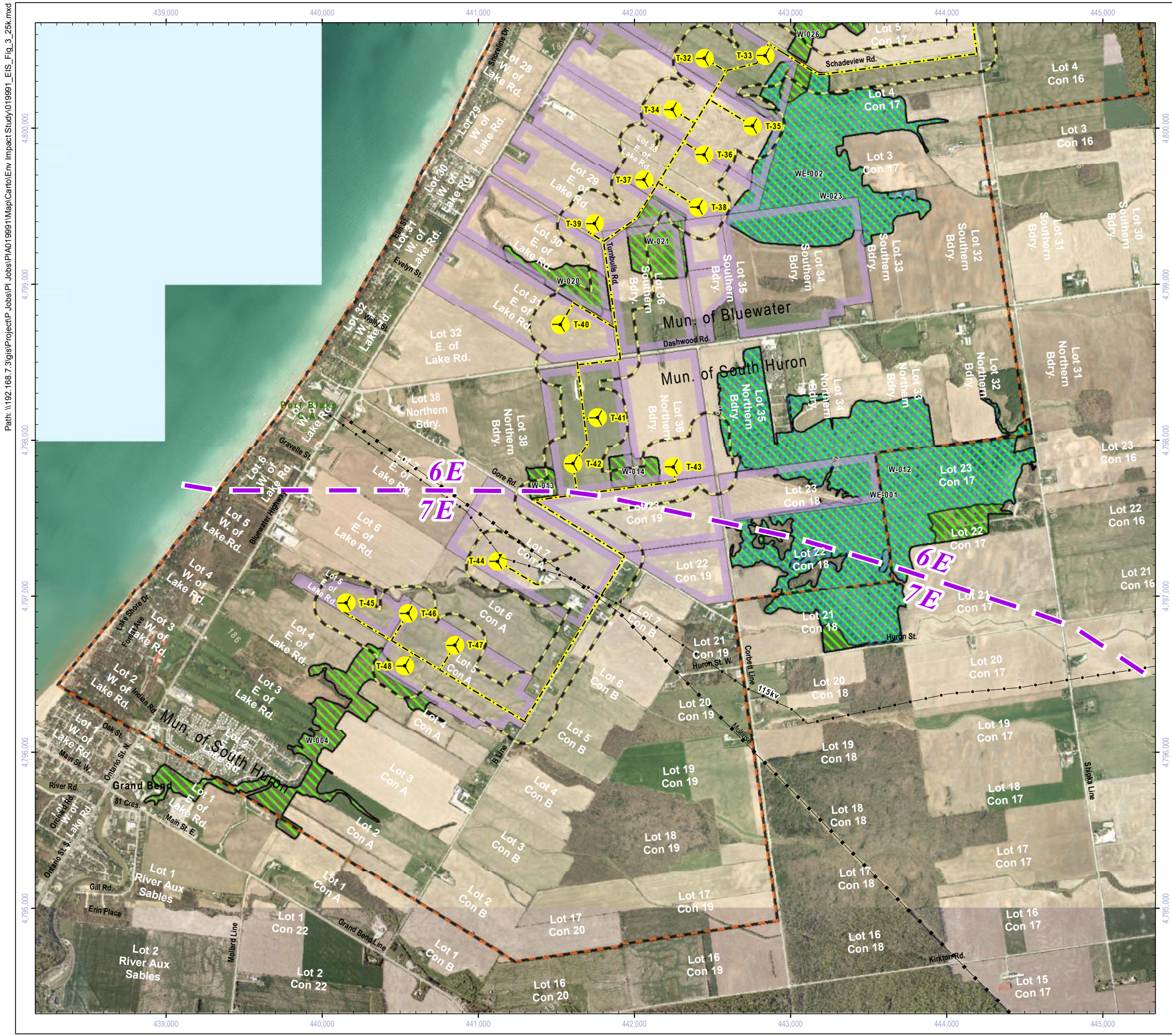
- County of Huron (including Imagery: 2010)
- Ministry of Natural Resources, © Queen's Printer for Ontario
- Natural Resources Canada © Her Majesty the Queen in Right of Canada



Title

**Grand Bend Wind Farm
Grand Bend Wind Limited Partnership
Environmental Impact Study
Significant Valleylands, Woodlands, & Wetlands**

Prepared	P. Stubbert	Checked	T. Radburn	Figure Number	3m
Scale	1:25,000	Project	PIA019991		



Project Infrastructure

- Wind Turbine Location
- Collector Line
- Transmission Line
- Transformer Sub-Station or Switch Yard

Significant Features

- Wetland Complex
- Valleyland
- Significant Wetland
- Significant Woodland
- 120m From Project Location
- Study Area
- Ecoregion 6E - 7E Division

NOTES:

- Reference the Figure 1 Key Map for location in the overall project area.

DATA SOURCES:

- County of Huron (including Imagery: 2010)
- Ministry of Natural Resources, © Queen's Printer for Ontario
- Natural Resources Canada © Her Majesty the Queen in Right of Canada

21 November 2012

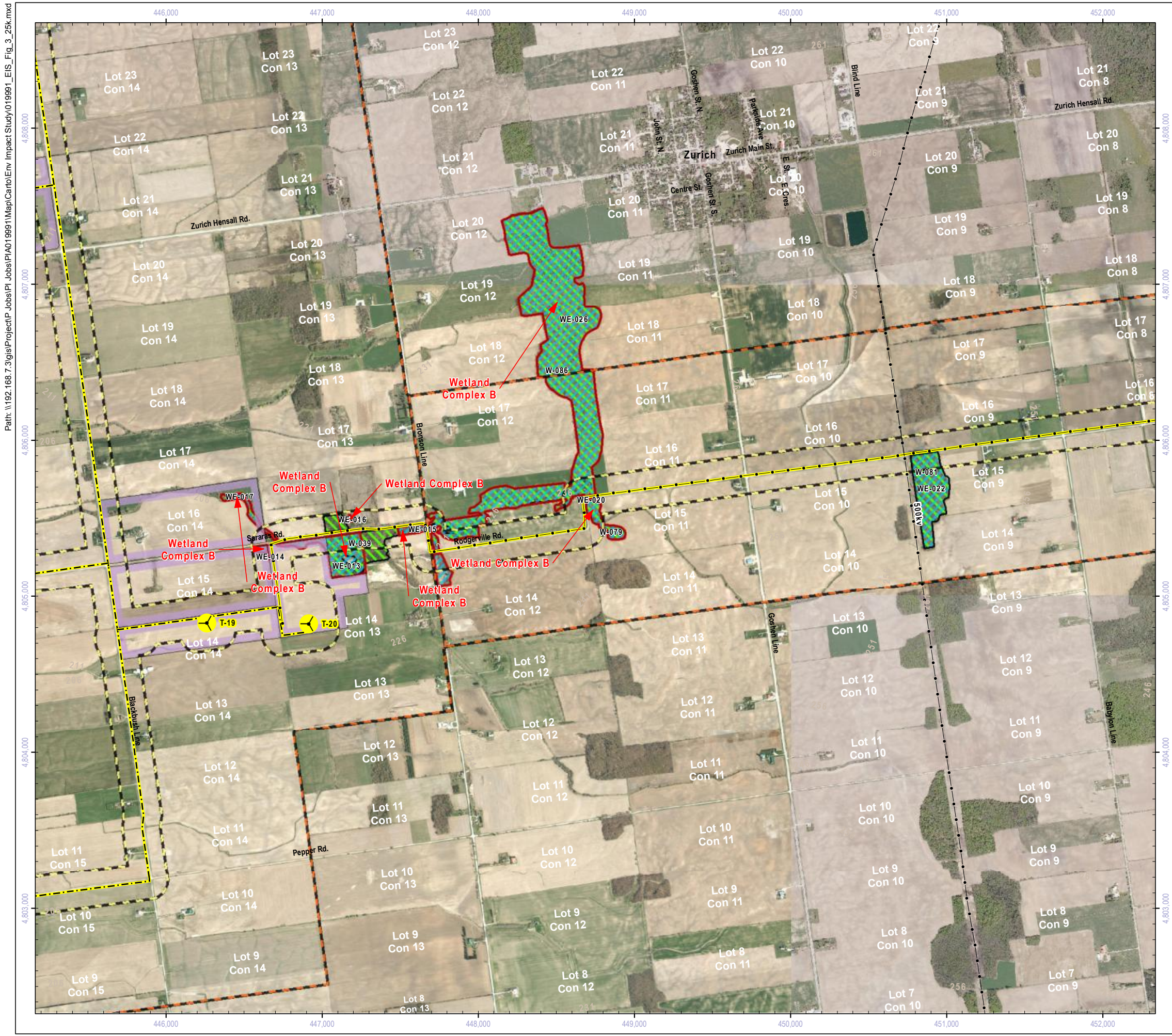
Projection: UTM Zone 17
Datum: NAD 83



Title

**Grand Bend Wind Farm
Grand Bend Wind Limited Partnership
Environmental Impact Study
Significant Valleylands, Woodlands, & Wetlands**

Prepared	P. Stubbert	Checked	T. Radburn	Figure Number
Scale	1:25,000	Project	PIA019991	3n



Project Infrastructure

- Wind Turbine Location
- Collector Line
- Transmission Line
- Transformer Sub-Station or Switch Yard

Significant Features

- Wetland Complex
- Valleyland
- Significant Wetland
- Significant Woodland
- 120m From Project Location
- Study Area
- Ecoregion 6E - 7E Division

NOTES:

- Reference the Figure 1 Key Map for location in the overall project area.

DATA SOURCES:

- County of Huron (including Imagery: 2010)
- Ministry of Natural Resources, © Queen's Printer for Ontario
- Natural Resources Canada © Her Majesty the Queen in Right of Canada

21 November 2012

Projection: UTM Zone 17
Datum: NAD 83







Title

**Grand Bend Wind Farm
Grand Bend Wind Limited Partnership
Environmental Impact Study
Significant Valleylands, Woodlands, & Wetlands**





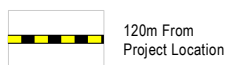

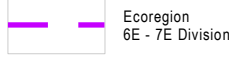
Prepared	P. Stubbert	Checked	T. Radburn	Figure Number
Scale	1:25,000	Project	PIA019991	30



Project Infrastructure

-  Wind Turbine Location
-  Collector Line
-  Transmission Line
-  Transformer Sub-Station or Switch Yard

Significant Features

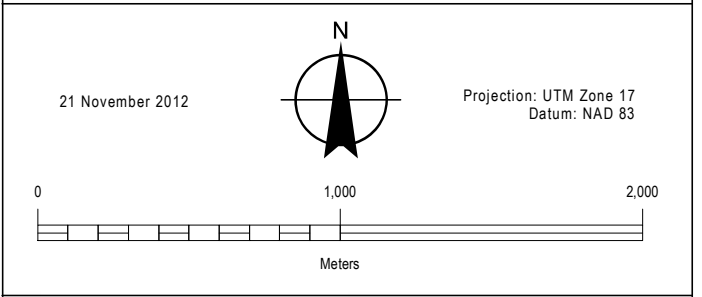
-  Wetland Complex
-  Valleyland
-  Significant Wetland
-  Significant Woodland
-  120m From Project Location
-  Study Area
-  Ecoregion 6E - 7E Division

NOTES:

1. Reference the Figure 1 Key Map for location in the overall project area.

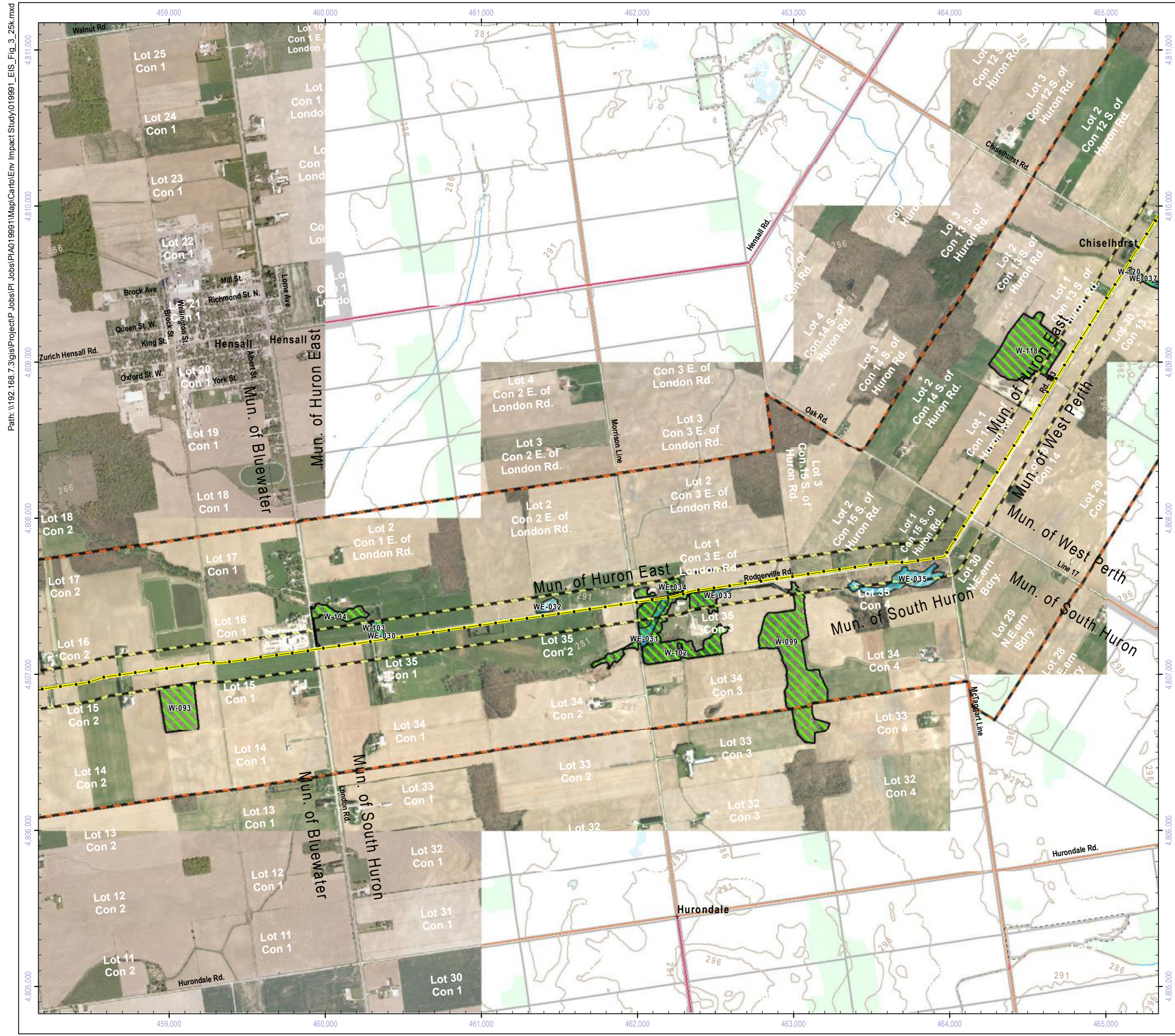
DATA SOURCES:

1. County of Huron (including Imagery: 2010)
2. Ministry of Natural Resources, © Queen's Printer for Ontario
3. Natural Resources Canada © Her Majesty the Queen in Right of Canada



Title
Grand Bend Wind Farm
Grand Bend Wind Limited Partnership
Environmental Impact Study
Significant Valleylands, Woodlands, & Wetlands

Prepared	P. Stubbert	Checked	T. Radburn	Figure Number
Scale	1:25,000	Project	PIA019991	3p



Project Infrastructure

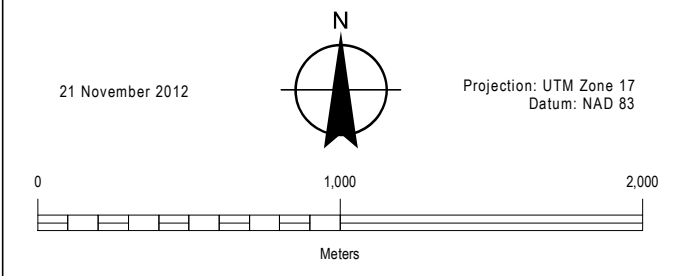
- Wind Turbine Location
- Collector Line
- Transmission Line
- Transformer Sub-Station or Switch Yard

Significant Features

- Wetland Complex
- Valleyland
- Significant Wetland
- Significant Woodland
- 120m From Project Location
- Study Area
- Ecoregion 6E - 7E Division

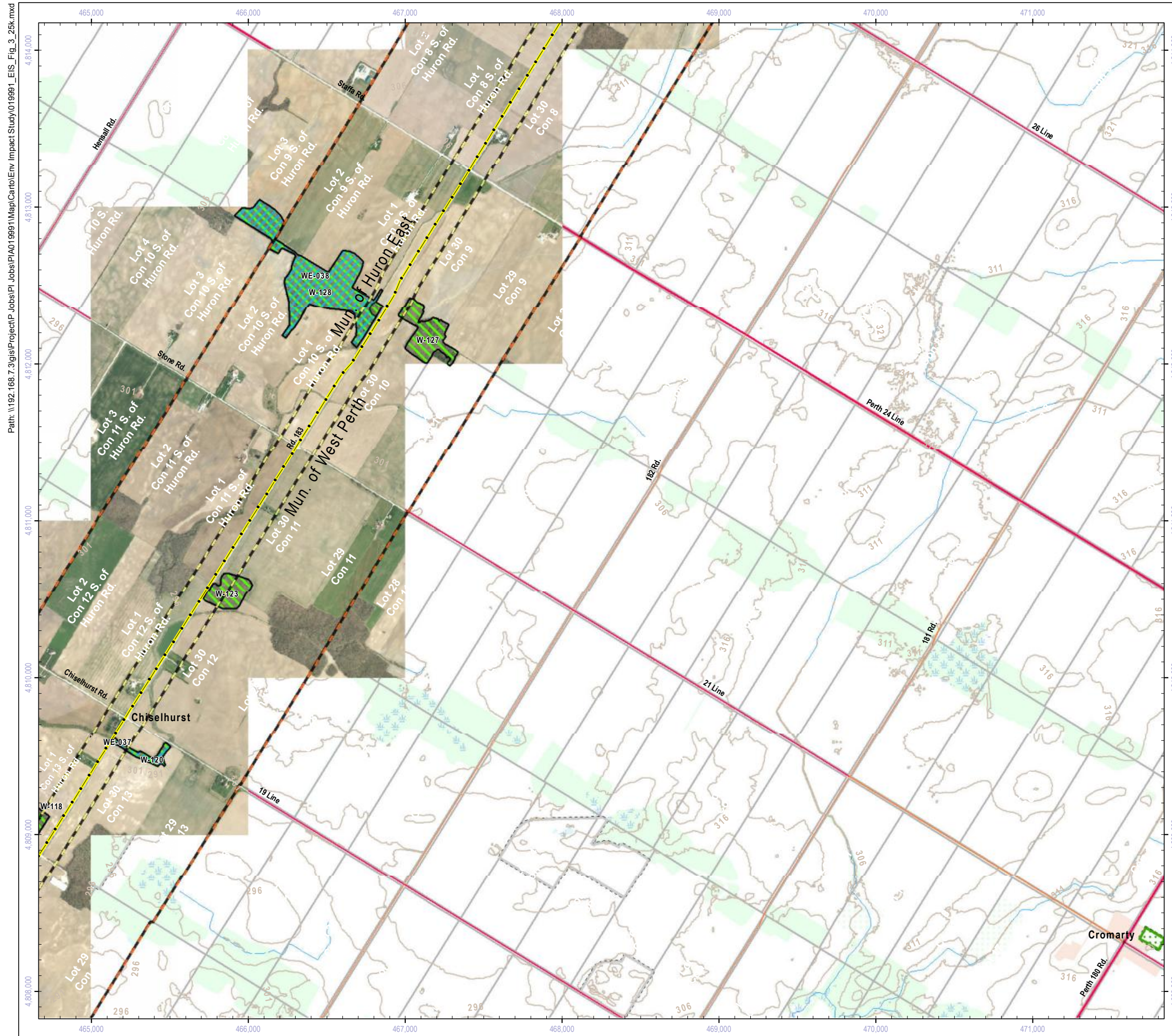
NOTES:
 1. Reference the Figure 1 Key Map for location in the overall project area.

DATA SOURCES:
 1. County of Huron (including Imagery: 2010)
 2. Ministry of Natural Resources, © Queen's Printer for Ontario
 3. Natural Resources Canada © Her Majesty the Queen in Right of Canada



Title
**Grand Bend Wind Farm
 Grand Bend Wind Limited Partnership
 Environmental Impact Study
 Significant Valleylands, Woodlands, & Wetlands**

Prepared	P. Stubbert	Checked	T. Radburn	Figure Number
Scale	1:25,000	Project	PIA019991	3q



Project Infrastructure

- Wind Turbine Location
- Collector Line
- Transmission Line
- Transformer Sub-Station or Switch Yard

Significant Features

- Wetland Complex
- Valleyland
- Significant Wetland
- Significant Woodland
- 120m From Project Location
- Study Area
- Ecoregion 6E - 7E Division

NOTES:

- Reference the Figure 1 Key Map for location in the overall project area.

DATA SOURCES:

- County of Huron (including Imagery: 2010)
- Ministry of Natural Resources, © Queen's Printer for Ontario
- Natural Resources Canada © Her Majesty the Queen in Right of Canada

21 November 2012

Projection: UTM Zone 17
Datum: NAD 83

0 1,000 2,000
Meters

NEEGAN BURNSIDE

Title

**Grand Bend Wind Farm
Grand Bend Wind Limited Partnership
Environmental Impact Study
Significant Valleylands, Woodlands, & Wetlands**

Prepared	P. Stubbert	Checked	T. Radburn	Figure Number
Scale	1:25,000	Project	PIA019991	3r



Project Infrastructure

- Wind Turbine Location
- Collector Line
- Transmission Line
- Transformer Sub-Station or Switch Yard

Significant Features

- Wetland Complex
- Valleyland
- Significant Wetland
- Significant Woodland
- 120m From Project Location
- Study Area
- Ecoregion 6E - 7E Division

NOTES:

- Reference the Figure 1 Key Map for location in the overall project area.

DATA SOURCES:

- County of Huron (including Imagery: 2010)
- Ministry of Natural Resources, © Queen's Printer for Ontario
- Natural Resources Canada © Her Majesty the Queen in Right of Canada

21 November 2012

Projection: UTM Zone 17
Datum: NAD 83

0 1,000 2,000
Meters



Title

**Grand Bend Wind Farm
Grand Bend Wind Limited Partnership
Environmental Impact Study
Significant Valleylands, Woodlands, & Wetlands**

Prepared	P. Stubbert	Checked	T. Radburn	Figure Number
Scale	1:25,000	Project	PIA019991	3s