

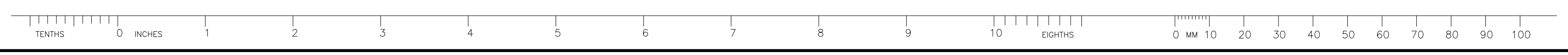
**McLean's Mountain Wind Limited Partnership**

**Exhibit E**

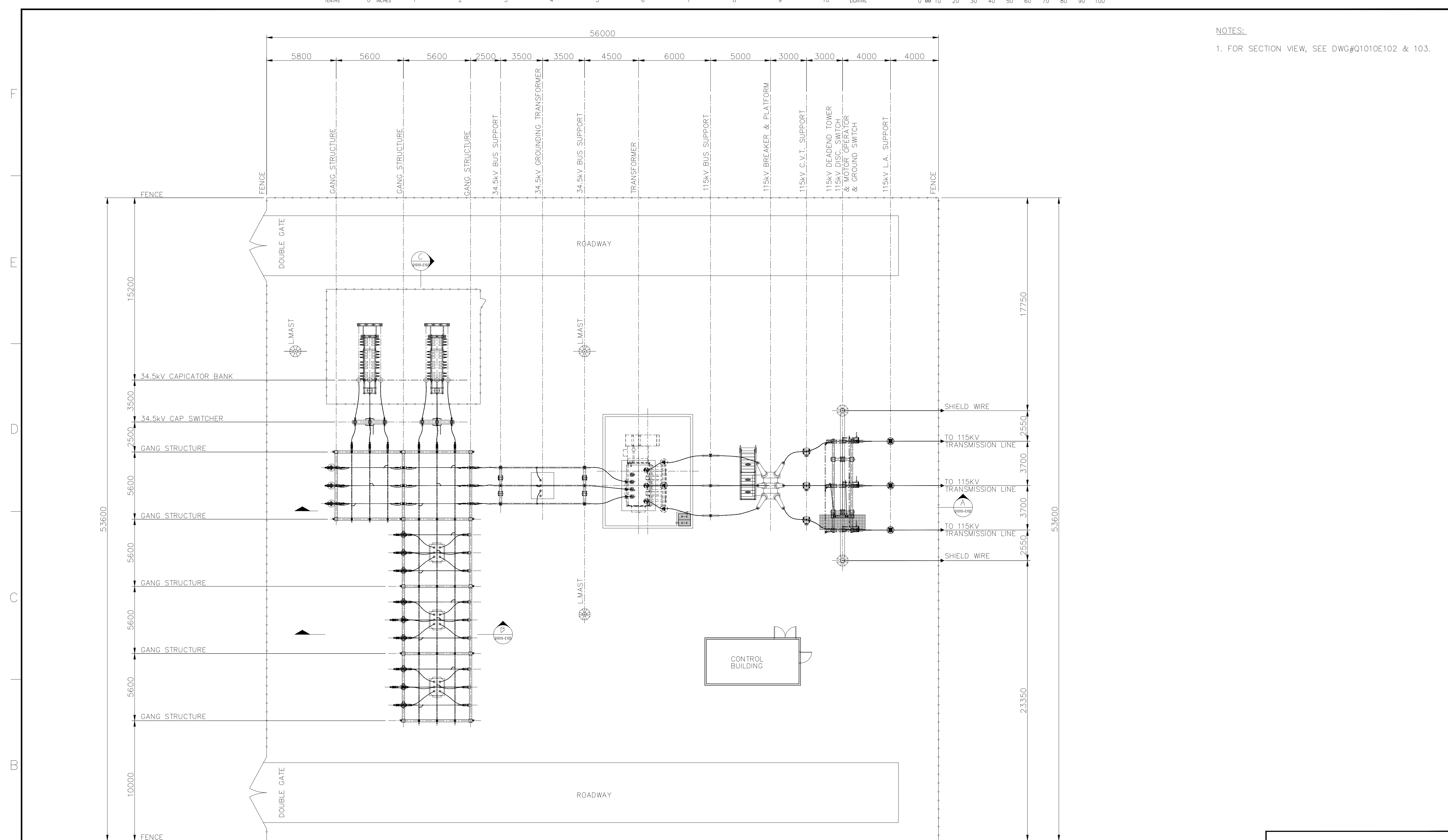
**Tab 1**

**Schedule 3**

**DESIGN SPECIFICATIONS AND OPERATIONAL DATA: ELECTRICAL DRAWINGS**  
**OF TRANSMISSION FACILITIES**



NOTES:  
1. FOR SECTION VIEW, SEE DWG#Q1010E102 & 103.



PLAN VIEW

REV.	DATE	DESCRIPTION	BY	CHECKED
B	27/09/11	GENERAL REVISION	E.H.	K.W.
A	10/05/10	ISSUE FOR REVIEW	J.W.	K.W.

STAMP/SEAL  
PROPRIETARY INFORMATION:  
THIS DRAWING IS THE PROPERTY OF CHIMAX INC.  
AND IS NOT TO BE LOANED OR REPRODUCED IN ANY WAY  
WITHOUT THE PERMISSION OF CHIMAX INC.

APPROVED FOR CONSTRUCTION			
CLIENT PROJECT MGR.	DEPARTMENT MGR.	PROJECT MGR.	
PROJECT PHASE		AREA	McLEANS MOUNTAIN WIND FARM
PROJECT NO.	ACTIVITY NO.	PACKAGE CODE	SUBJECT
SCALE		BY	D/M/Y
N.T.S. (D-SIZE)		DSN. K.WONG DRN. L.S.	29/04/10 29/04/10

McLEANS MOUNTAIN 115kV-34.5kV SUBSTATION PLAN VIEW	
--	--

**EPTCON LTD.** ELECTRICAL POWER & TRANSMISSION CONSTRUCTION  
380 SHELDON DRIVE, UNIT #1, CAMBRIDGE, ONTARIO N1T 2C2  
TEL: (519) 620-4414 FAX: (519) 620-4413

**Chimax Inc.**  
Engineering Company  
3950 Fourteenth Ave. East, Suite 506  
Markham, On., L3R 0A9  
Tel: (905) 305-6133  
Fax: (905) 305-6132  
Email: chimax@chimax.ca

CLIENT DWG. NO.  
DRAWING NO.  
Q1010E101

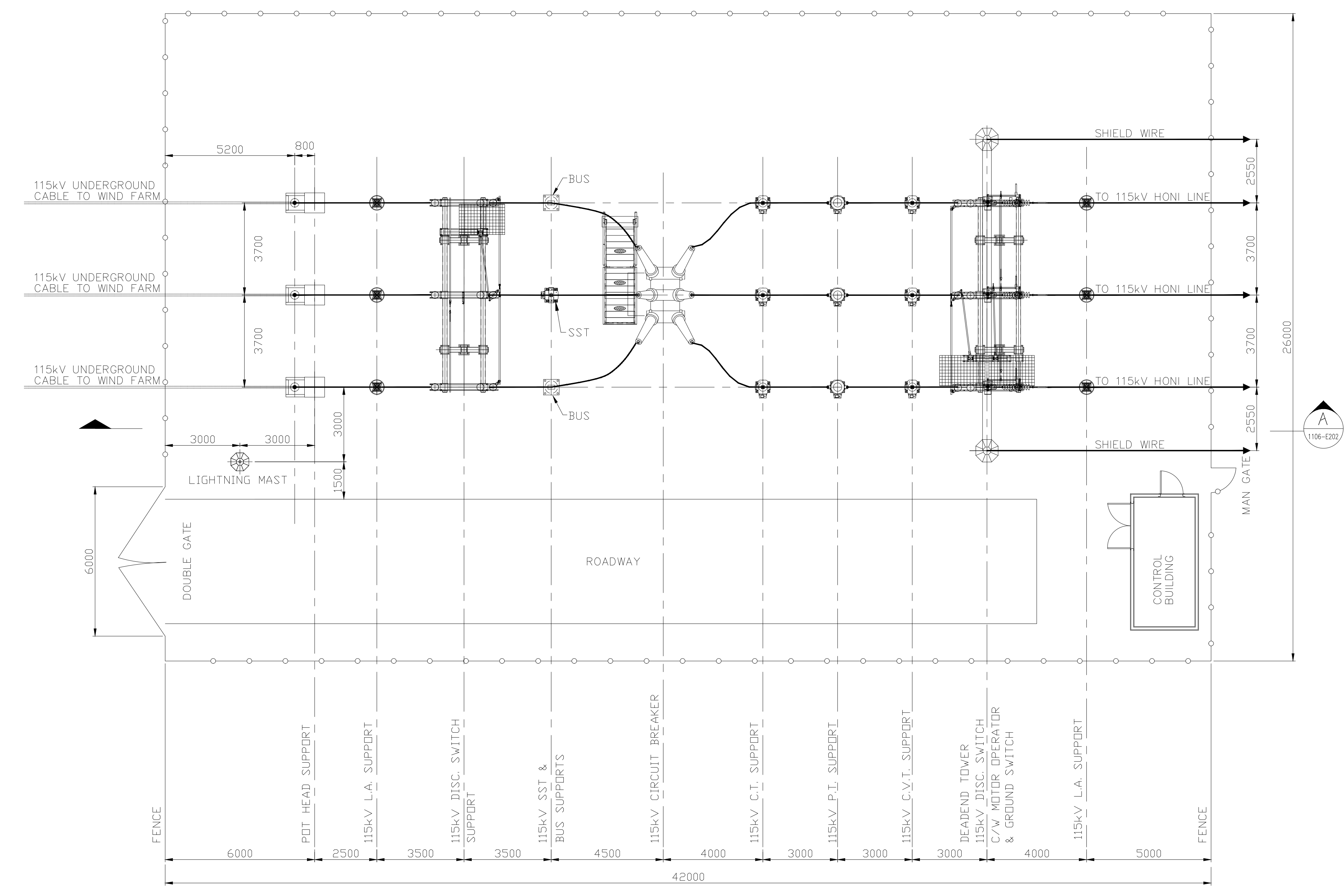
REV.  
B

CADD FILE ADDRESS  
Q1010E101-B

Grid lines A through T and 1 through 9 are marked along the perimeter of the drawing area.



NOTES:  
1. FOR SECTION VIEW, SEE DWG#Q1010E202.



PLAN VIEW

REV	D/M/Y	REVISION	DR	CHK	APP	APP	APP	APP	ISS	D/M/Y	APP	ISSUED FOR	REF	NUMBER	TITLE	REFERENCES
D	28/09/11	GENERAL REVISION							D	28/09/11		ISSUE FOR REVIEW				
C	27/09/11	GENERAL REVISION							C	27/09/11		ISSUE FOR REVIEW				
B	26/04/11	CONCEPTUAL ISSUED - FEASIBILITY STUDY							B	26/04/11		CONCEPTUAL ISSUED - FEASIBILITY STUDY				
A	10/05/10	ISSUED FOR REVIEW							A	15/04/11		ISSUED FOR REVIEW				

STAMP/SEAL  
PROPRIETARY INFORMATION:  
THIS DRAWING IS THE PROPERTY OF CHIMAX INC.  
AND IS NOT TO BE LOANED OR REPRODUCED IN ANY WAY  
WITHOUT THE PERMISSION OF CHIMAX INC.

APPROVED FOR CONSTRUCTION			
CLIENT PROJECT MGR.	DEPARTMENT MGR.	PROJECT MGR.	
PROJECT PHASE			AREA
			MCLEAN MOUNTAIN WIND FARM
PROJECT NO.	ACTIVITY NO.	PACKAGE CODE	SUBJECT
			115kV TRANSMISSION SWITCHING SUBSTATION PLAN VIEW (CONCEPTUAL)
SCALE	BY	D/M/Y	
DSN. K.WONG		29/04/10	
DRN. J.WONG		29/04/10	

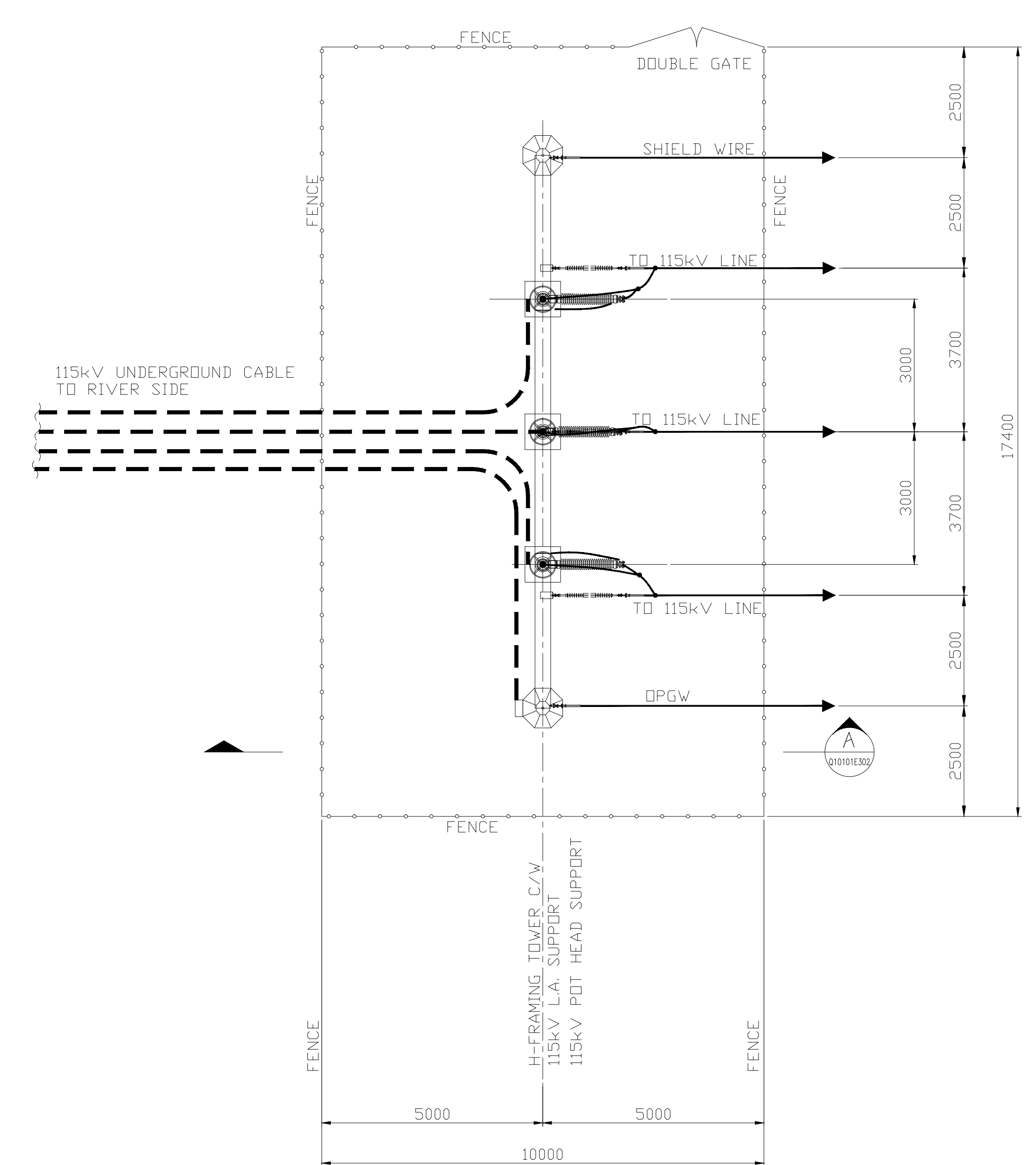
**EPTCON LTD.** ELECTRICAL POWER & TRANSMISSION CONSTRUCTION  
560 SHELDON DRIVE, CAMBRIDGE, ONTARIO N1T 0A4  
TEL: (519) 620-4414 FAX: (519) 620-4413

**Chimax Inc.**  
Engineering Company  
3950 Fourteenth Ave. East, Suite 506  
Markham, On., L3R 0A9  
Email: chimax@chimax.ca

CLIENT DWG. NO.	
DRAWING NO.	REV.
Q1010E201	D
CADD FILE ADDRESS	
Q1010E201-D	



NOTES:  
1. FOR SECTION VIEW, SEE DWG#Q1010E302.



PLAN VIEW

**EPTCON LTD.** ELECTRICAL POWER & TRANSMISSION CONSTRUCTION  
560 SHELDON DRIVE, CAMBRIDGE, ONTARIO N1T 0A4  
TEL: (519) 620-4414 FAX: (519) 620-4413

**Chimax Inc.**  
Engineering Company  
3950 Fourteenth Ave. East, Suite 506  
Markham, On., L3R 0A9  
Email: chimax@chimax.ca

APPROVED FOR CONSTRUCTION			AREA MCLEAN MOUNTAIN WIND FARM
CLIENT PROJECT MGR.	DEPARTMENT MGR.	PROJECT MGR.	
PROJECT PHASE			SUBJECT 115kV TRANSMISSION TRANSITION SUBSTATION PLAN VIEW (CONCEPTUAL)
PROJECT NO.	ACTIVITY NO.	PACKAGE CODE	
SCALE	BY DSN. K.WONG DRN. E.HO	D/M/Y 15/04/11 15/04/11	CLIENT DWG. NO. Q1010E301

REV	D/M/Y	REVISION	DR	CHK	APP	APP	APP	APP	ISS	D/M/Y	APP	ISSUED FOR	REF	NUMBER	TITLE	REFERENCES	STAMP/SEAL
C	27/09/11	GENERAL REVISION								C	27/09/11	ISSUE FOR REVIEW					
B	26/04/11	CONCEPTUAL ISSUED - FEASIBILITY STUDY								B	26/04/11	CONCEPTUAL ISSUED - FEASIBILITY STUDY					
A	15/04/11	ISSUED FOR REVIEW								A	15/04/11	ISSUED FOR REVIEW					

- NOTES:
1. CIRCUIT BREAKER RATINGS: 145kV, 1200A, 650kV BL, 50kA, 1C, 3 CYCLE INTERRUPTING.
  2. DISCONNECT SWITCH RATINGS: 1200A, 145kV, 105kV BL.
  3. GROUND SWITCH INTERLOCKED WITH LINE SWITCH.
  4. EQUIPMENT LOCATED IN SUBSTATION CONTROL BUILDING.
  5. PROTECTION SCHEME AND RELAY SELECTION TO BE CONFIRMED BY HONI.
  6. TELEPROTECTION SCHEME AND ASSOCIATED EQUIPMENT TO BE CONFIRMED BY HONI.
  7. METRING UNITS AND INSTRUMENT TRANSFORMERS TO BE PROVIDED BY THE PROJECT ESO CERTIFIED MSP.
  8. REQUIRED ONLY IF OPERATING WIND FARM CONNECTED TO ALCOVA TS.
  9. THE LOCAL UTILITY SUPPLY IF AVAILABLE IS SHOWN AS AN OPTION. IF THE LOCAL SUPPLY IS USED, SSTI WILL NOT BE REQUIRED.

LEGEND:

21	- DISTANCE PROTECTION
27	- UNDERVOLTAGE RELAY
50	- OVERCURRENT RELAY - INSTANTANEOUS
50B	- BREAKER FAIL PROTECTION
51	- OVERCURRENT RELAY - INVERSE TIME PHASE, NEGATIVE GROUND
52	- AC CIRCUIT BREAKER
59	- OVERVOLTAGE RELAY
87L	- LINE INTERPHASE PROTECTION
89	- DISCONNECT SWITCH
---	- COMMUNICATION CHANNEL

REV.	DATE	DESCRIPTION	CHK'D	APP'D
E	30/09/11	GENERAL UPDATE		RCC
D	12/09/11	ADDED PQ SENSOR		PRP
C	24/08/11	CHG RELAYS, ADDED REVENUE METER		TS
B	30/04/10	REVD TO INCLUDE 528 LINE PROT. EQ.		TS
A	17/09/09	ISSUED WITH PROPOSAL		EAM

REV.	DATE	DESCRIPTION	CHK'D	APP'D
		REVISIONS		


  
 Engineering Inc. - Electrical Power Specialists  
 Tel (905) 688-6857 Fax (905) 688-6926  
 www.onelineeng.com

**EPTCON LTD.**
  
TRANSMISSION CONSULTANTS  
 5460 SHEPPARD AVENUE EAST, SUITE 100  
 SCARBOROUGH, ONTARIO M1S 1T2

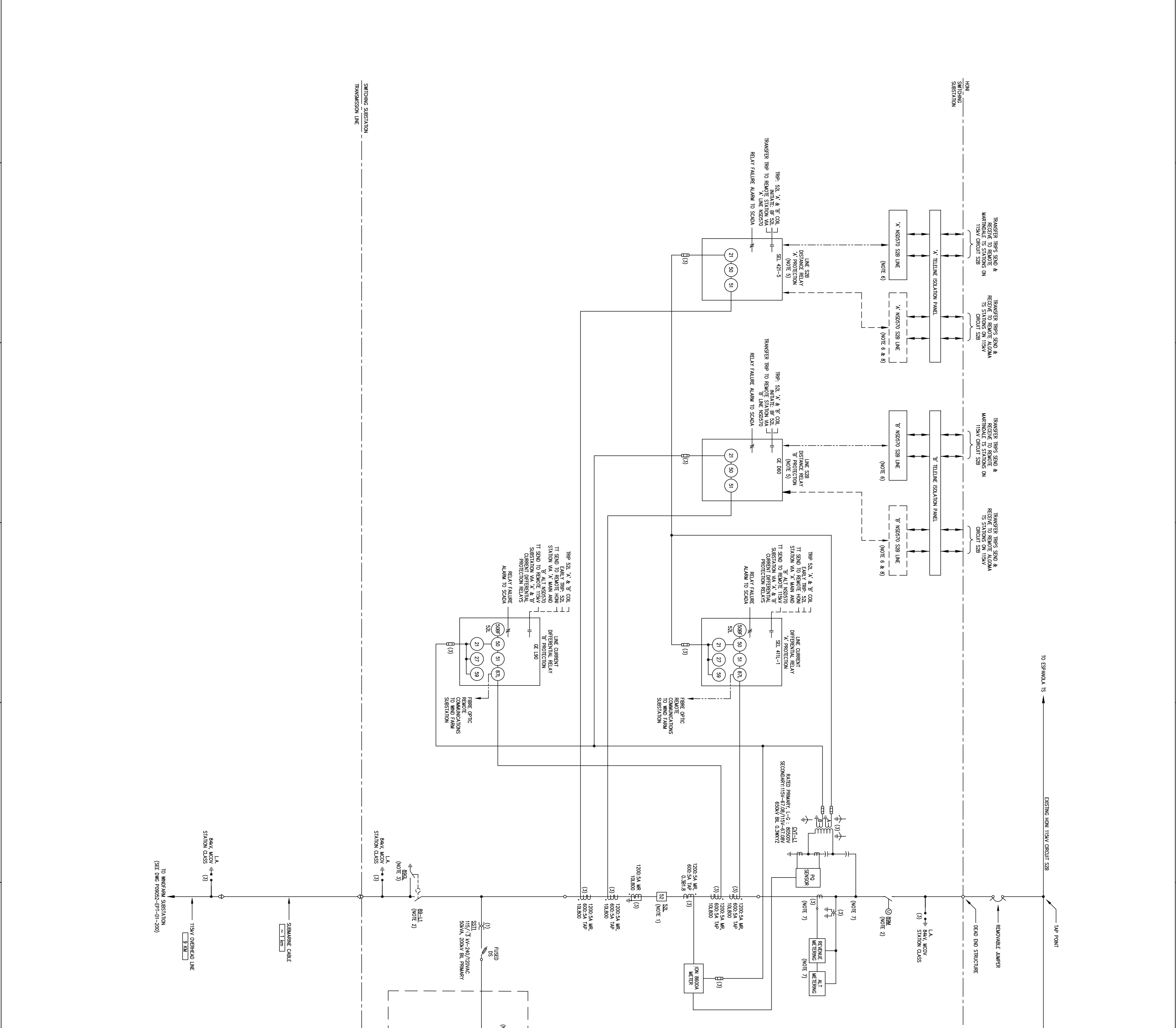
CLIENT:  
 MALEANS MOUNTAIN 60MW WIND FARM PROJECT  
 EPTCON PROJECT 11XX

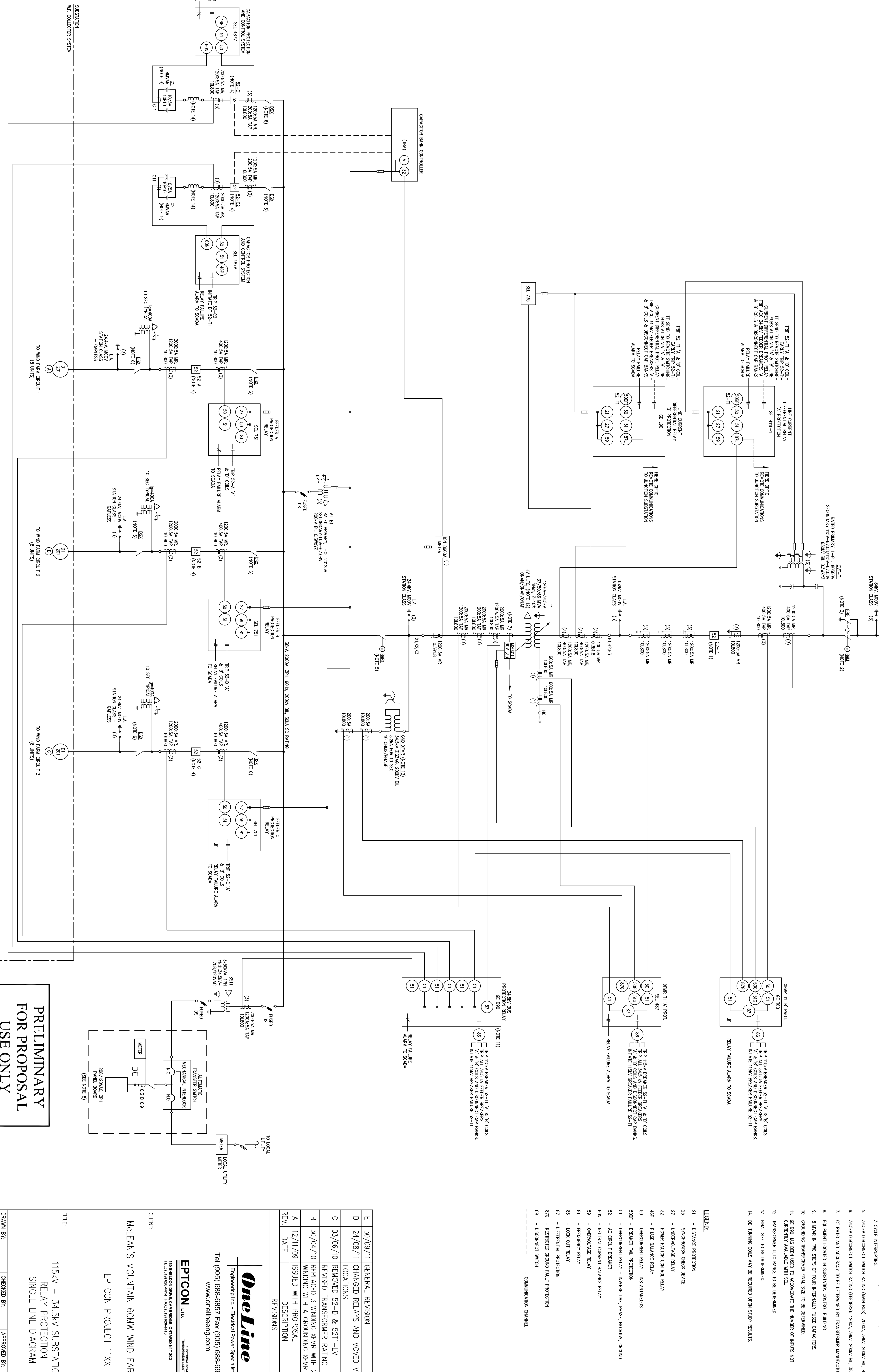
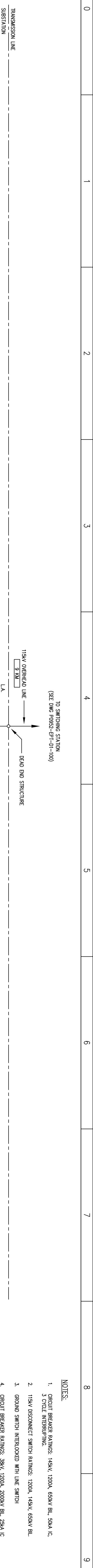
TITLE:  
 115kV SWITCHING SUBSTATION  
 RELAY PROTECTION  
 SINGLE LINE DIAGRAM

DRAWN BY: J. RAMSEY  
 CHECKED BY: R. CRESSMAN  
 SCALE: NTS  
 DATE: 11/11/09  
 DWG. NO.: P09052-EPT-D1-100  
 SHEET NO.: 1  
 REV: E

**PRELIMINARY  
 FOR PROPOSAL  
 USE ONLY**

PROPRIETARY INFORMATION:  
 THIS DRAWING IS THE INTELLECTUAL PROPERTY OF ONELINE ENGINEERING INC. AND IS NOT TO BE LOANED  
 OR REPRODUCED IN ANY WAY WITHOUT THE EXPRESS PERMISSION OF ONELINE ENGINEERING INC.





- NOTES:**
- CIRCUIT BREAKER RATINGS: 115kV, 1200A, 650kV ICL, 50kA IC, 3 CYCLE INTERRUPTING.
  - 115kV DISCONNECT SWITCH RATINGS: 1200A, 115kV, 650kV ICL.
  - GROUND SWITCH INTERLOCKED WITH LINE SWITCH.
  - CIRCUIT BREAKER RATINGS: 38kV, 1200A, 200kV ICL, 25kA IC.
  - 34kV DISCONNECT SWITCH RATING (MAIN BUS): 2000A, 38kV, 200kV ICL, 44kA IC.
  - 34kV DISCONNECT SWITCH RATING (FEEDERS): 1200A, 38kV, 200kV ICL, 38kA IC.
  - CT RATIO AND ACCURACY TO BE DETERMINED BY TRANSFORMER MANUFACTURER.
  - EQUIPMENT LOCATED IN SUBSTATION CONTROL BUILDING.
  - 8 WIRE IN TWO STAGES OF FOUR INTERNALLY FUSED CAPACITORS.
  - GROUNDING TRANSFORMER FINAL SIZE TO BE DETERMINED.
  - IF RBO HAS BEEN USED TO ACCOMMODATE THE NUMBER OF INPUTS NOT CURRENTLY AVAILABLE WITH SEL.
  - TRANSFORMER ULTC RATIO TO BE DETERMINED.
  - FINAL SIZE TO BE DETERMINED.
  - DE-ENERGIZING COILS MAY BE REQUIRED UPON STUDY RESULTS.

- LEGEND:**
- 21 - DISTANCE PROTECTION
  - 25 - SYNCHRONISM CHECK DEVICE
  - 27 - UNDERVOLTAGE RELAY
  - 32 - POWER FACTOR CONTROL RELAY
  - 48 - PHASE FAILURE RELAY
  - 50 - OVERCURRENT RELAY - INSTANTANEOUS
  - 50B - BREAKER FAIL PROTECTION
  - 51 - OVERCURRENT RELAY - INVERSE TIME PHASE NEGATIVE GROUND
  - 52 - AC CIRCUIT BREAKER
  - 60N - NEUTRAL CURRENT BALANCE RELAY
  - 59 - OVERVOLTAGE RELAY
  - 81 - FREQUENCY RELAY
  - 86 - LOCK OUT RELAY
  - 87 - DIFFERENTIAL PROTECTION
  - 87B - RESTRICTED GROUND FAULT PROTECTION
  - 89 - DISCONNECT SWITCH
  - DASHED --- COMMUNICATION CHANNEL

REV.	DATE	DESCRIPTION	CHK'D	APP'D
E	30/09/11	GENERAL REVISION	RDC	
D	24/08/11	CHANGED RELAYS AND MOVED VT LOCATIONS	TS/PP	
C	03/06/10	REMOVED 52-D & 52T1-LV	TS	
B	30/04/10	REPLACED 3 WINDING XFMR WITH 2 WINDINGS WITH A GROUNDING XFMR	TS	
A	12/11/09	ISSUED WITH PROPOSAL	TS	EAM

**OneLine**  
 Engineering Inc. - Electrical Power Specialists  
 Tel (905) 688-6857 Fax (905) 688-6926  
 www.onelineeng.com

**EPTCON LTD.**  
 2009 TORONTO  
 209 TORONTO  
 209 TORONTO  
 209 TORONTO

CLIENT: MCLAN'S MOUNTAIN 60MW WIND FARM PROJECT  
 EPTCON PROJECT 11XX

TITLE: 115kV - 34.5kV SUBSTATION  
 RELAY PROTECTION  
 SINGLE LINE DIAGRAM

SCALE: NTS

DATE: 11/11/09

PROPOSAL: P09052-EPT-D1-200

PROPRIETARY INFORMATION:  
 THIS DRAWING IS THE INTELLECTUAL PROPERTY OF ONELINE ENGINEERING INC. AND IS NOT TO BE LOANED OR REPRODUCED IN ANY WAY WITHOUT THE EXPRESS PERMISSION OF ONELINE ENGINEERING INC.