



**NORTHLAND
POWER**

Belleville North Solar Project Consultation Report

August 15, 2011



Northland Power Inc.
on behalf of
Northland Power Solar
Rideau Lakes L.P.
Toronto, Ontario

Consultation Report

Belleville North Solar Project

H334844-0000-07-124-0023

Rev. 1

August 15, 2011

Disclaimer

This report has been prepared solely for the use of Northland Power Inc., who is submitting this document to the Ministry of the Environment as part of the Renewable Energy Approval process. The content of this document is not intended for the use of, nor is it intended to be relied upon by any person, firm or corporation.

Project Report

August 15, 2011

**Northland Power Inc.
Belleville North Solar Project**

Consultation Report

Table of Contents

1. Overview	5
1.1 Project Description	5
1.2 Legislative Requirements.....	5
1.3 The Consultation Process	7
2. Consultation with the Public	9
2.1 Methods of Consultation	9
2.2 List of Stakeholders	10
2.3 Details and Results of Consultation	10
2.3.1 First Public Meeting and Notice	10
2.3.2 Final Public Meeting and Notice	11
2.3.3 Other Public Consultation	12
2.4 Public Comments and Concerns	13
3. Consultation with Agencies.....	21
3.1 Agencies	21
3.1.1 Department of National Defence.....	21
3.1.2 Ontario Ministry of Environment	21
3.1.3 Ontario Ministry of Natural Resources.....	22
3.1.4 Ontario Ministry of Tourism and Culture	23
3.1.5 Prince Edward County.....	23
3.1.6 Quinte Conservation Authority.....	24
3.2 Agency Comments and Concerns.....	24
4. Consultation with Aboriginal Communities.....	29
4.1 Aboriginal Community Consultation List.....	29
4.2 Consultation Activities	29
4.2.1 First Public Meeting and Notice	29
4.2.2 Final Public Meeting and Notice	29
4.3 Other Aboriginal Consultation Activities	30
4.4 Aboriginal Comments and Concerns	33
5. Conclusions.....	37
6. References.....	39

Appendix A	Public Stakeholder List
Appendix B	Notices and Letters
Appendix C	Copies of Display Boards at First Public Meeting
Appendix D	Copies of Display Boards Final Public Meeting
Appendix E	Correspondence with the Public
Appendix F	Correspondence with Agencies
Appendix G	Correspondence with Municipalities
Appendix H	List of Aboriginal Communities from Ministry of the Environment
Appendix I	Letters to Aboriginal Communities
Appendix J	Correspondence with Aboriginal Communities

List of Tables

Table 1.1	Legislative Requirements – Concordance Table.....	6
Table 2.1	Comments/Concerns from Public and Responses	13
Table 3.1	Comments/Concerns From Agencies and Responses	24
Table 4.1	Details of Additional Consultation Activities.....	30
Table 4.2	Comments/Concerns from Aboriginal Communities and Responses	34

Blank back

1. Overview

1.1 Project Description

Northland Power Inc. (hereinafter referred to as “Northland”) is proposing to develop a Class 3 10-megawatt (MW) ground mounted solar photovoltaic (Solar PV) facility in the County of Prince Edward. This Project, known as the Belleville North Solar Project, is hereafter referred to as “Belleville North” or the “Project.”

The Project location is approximately 40 hectares (ha) in size and located on Lot 65, Concession 5 Bay Side, and west of the town Crofton. The Project location is situated north of Burr Road and west of Highway 62.

1.2 Legislative Requirements

Ontario Regulation (O.Reg.) 359/09 – *Renewable Energy Approvals under Part V.0.1 of the Act*, (herein referred to as the REA Regulation) made under the *Environmental Protection Act* identifies the Renewable Energy Approval (REA) requirements for renewable energy projects in Ontario. Per Section 4 of the REA Regulation, ground-mounted solar facilities with a nameplate capacity greater than 10 kilowatts (kW) are classified as Class 3 solar facilities and do require a REA.

Consultation is a requirement of the REA process as stipulated by Sections 14, 15, 16, 17 and 18 of REA Regulation. In addition, the Ministry of the Environment (MOE) has prepared draft guidelines called “*Technical Bulletin Five - Guidance for Preparing the Consultation Report*” (MOE, 2010) outlining the Ministry’s expectations and guidelines for appropriate consultation, including the development of a Consultation Report as part of the REA application package. This Consultation Report has been prepared in accordance with the requirements of the REA Regulation and the MOE technical bulletin.

It is noted that at the time of submittal of this report, MOE stated that an Aboriginal consultation document, titled “*Aboriginal Consultation Guide for Renewable Energy Projects Governed Under O.Reg. 359/09: Aboriginal Consultation Guide*” was being drafted to be released at a later date, but was not currently publicly available. As a result, the above-mentioned guidance document (Technical Bulletin Five) was used as a reference for meeting Aboriginal consultation requirements.

Table 1 in the REA Regulation requires the Consultation Report to include the following:

- a summary of communications with any members of the public, aboriginal communities, municipalities, local road boards and local services boards regarding the Project
- evidence that the information required to be distributed to aboriginal communities under Subsection 17(1) was distributed
- any information provided by an aboriginal community in response to a request made under paragraph 4 of Subsection 17(1)
- evidence that a consultation form was distributed in accordance with Subsection 18(1)
- the consultation form distributed under Subsection 18(1), if any part of it has been completed by a municipality, local roads board or local services board

- a description of whether and how:
 - ◆ comments from the members of the public, aboriginal communities, municipalities, local roads boards and local service boards were considered by the person who is engaging in the Project
 - ◆ the documents that were made available under Subsection 16(5) were amended after the final Public Meeting was held
 - ◆ the proposal to engage in the project was altered in response to comments made from members of the public, aboriginal communities, municipalities, local roads boards and local service boards

The legislative requirements have been documented within this Consultation Report. The information as it relates to legislative requirements is in a concordance table, Table 1.1.

Table 1.1 Legislative Requirements – Concordance Table

Requirements	Location Within the Consultation Report
A summary of communications with public, aboriginal communities, and municipalities.	Communications with the public are summarized in Table 2.1 and provided in Appendix E.
	Communications with Aboriginal communities are summarized in Tables 4.1 and 4.2 and provided in Appendixes I and J.
	Communications with municipalities and other Public Agencies are summarized in Table 3.1 and found in Appendixes E and Appendix F.
Evidence that the information required to be distributed to aboriginal communities under Subsection 17(1) was distributed.	Section 4.
Any information provided by an aboriginal community in response to a request made under paragraph 4 of Subsection 17(1).	Section 4 and in Appendix J.
Evidence that a consultation form was distributed in accordance with Subsection 18(1).	Section 3
The consultation form distributed under Subsection 18(1), if any part of it has been completed by a municipality, location roads board or local service boards.	Appendix G.
A description of whether and how <ul style="list-style-type: none"> • comments from the members of the public, aboriginal communities, municipalities, local roads boards and local service boards were considered 	Table 2.1, Table 3.1, Tables 4.1 and 4.2.

<p>by the person who is engaging in the project</p> <ul style="list-style-type: none">• the documents that were made available under Subsection 16(5) were amended after the final Public Meeting was held, and• the proposal to engage in the project was altered in response to comments made from members of the public, aboriginal communities, municipalities, local roads boards and local service boards.	
---	--

1.3 The Consultation Process

Pursuant to O. Reg. 359/09, consultation conducted for the Project has included adjacent landowners, government agencies (e.g., Ontario Ministry of Natural Resources (MNR), MOE, Conservation Authorities, etc), local municipalities (upper and lower tier), aboriginal communities and the public. The objectives of the consultation process have been to obtain information about the Project location, identify issues and potential concerns, and to identify potential impacts associated with the Project and potential means of mitigating those impacts. As well, the consultation process has been used to identify specific stakeholders as a means to establish open and meaningful dialogue between the project Proponent and the stakeholders.

Local road boards and local service roads are not present in the Project area. Therefore, no consultation is possible with such bodies for the Project.

The following report provides:

- an outline and description of all consultation activities held for this Project for the public, government agencies, including municipalities and Aboriginal communities
- a summary of comments from public, government agencies and Aboriginal communities
- a summary of how these comments were incorporated into the REA process

Blank back

2. Consultation with the Public

2.1 Methods of Consultation

The methods of consultation for the Project include the requirements identified in the REA Regulation, as well as additional measures deemed necessary to ensure adequate consultation with the public. A wide variety of consultation methods increases the amount of public awareness and participation. The methods of consultation for this Project included the following:

- Notice of Proposal to Engage in a Renewable Energy Project/Notice of Public Meeting
 - ◆ Direct mail to all identified landowners within 120 m of the Project location (a full list of landowners is provided in Appendix A). A total of 13 notices were issued on July 19, 2010 for the first Public Meeting.
 - ◆ Posting on two separate occasions on Thursday, July 22, 2010 and Thursday, July 29, 2010 in the *Country Weekly News*, which has general circulation in the Project area. These notices are included in Appendix B
- Notice of Final Public Meeting
 - ◆ Direct mail to all identified landowners within 120m of the Project location (a full list of landowners is provided in Appendix A, as well as interested parties identified through Public Consultation efforts) A total of 32 notices were issued on March 23, 2011 for the final Public Meeting
 - ◆ Posting on two separate occasions on Thursday, March 24, 2011 and Thursday, April 28, 2011 in the *Country Weekly News*, which has general circulation in the Project area. These notices are included in Appendix B.
- a website (www.northlandpower.ca/bellevillenorth) with Project and Northland information, Notices and Project documents posted when available
- hard copies of the Project Description Report and supporting Project documents available for review at the Prince Edward County municipal office
- hard copies of the Project Description Report and supporting Project documents available for review at the Ameliasburg Branch of the Prince Edward County Public Library
- first and final Public Meetings
- additional meetings with community groups and concerned and/or interested local residents
- means to obtain comments on the Project by having comment sheets available at first and final Public Meetings and advertisement of phone numbers, fax and emails for the public to make comments
- one hardcopy of Draft Project Description Report available at the first Public Meeting and all the Draft REA project documents available for review at the final Public Meeting
- handouts (printed copies of boards) available at the Public Meetings

Through these methods, information, questions, comments, feedback and concerns regarding the Project were obtained and then utilized and addressed, as discussed in the following sections.

2.2 List of Stakeholders

A list of property owners within 120 m of the Project location was determined through consultation with Prince Edward County.

As correspondence was received from members of the public and other organizations regarding the Project, newly identified names and contact details were added to the public mailing list. For example, if any attendees of the first Public Meeting provided their mailing address, this address was added to the mailing list. Appendix A contains a copy of the public stakeholder list that was used for distribution of the Notice of Proposal to Engage in a Renewable Energy Project/Notice of Public Meeting and the expanded public stakeholder list that was used for distribution of the Notice of Final Public Meeting.

2.3 Details and Results of Consultation

The following sections provide information on the details of the consultation completed and the results.

It should be noted that between the formalized consultation activities, all stakeholders were encouraged to provide comments or questions via telephone, fax, email or mail at any time during the consultation process. Stakeholders were also encouraged to provide any concerns early in the process. Where relevant, a response was provided for each question or comment received, either directly (i.e., at the public consultation sessions) or through the same medium through which the submission was made. All comments and concerns, responses, and the impact to the Project are provided in this report.

2.3.1 First Public Meeting and Notice

The Notice of Proposal to Engage in a Renewable Energy Project and Public Meeting was published 30 days prior to the event in the *County Weekly News* on Thursday, July 22, 2010 and again on Thursday, July 29, 2010. The *County Weekly News* is a local paper published in Picton and circulates Prince Edward County. Notices and covering letter were sent by regular mail to all identified landowners within 120 m of the Project location. A total of 13 stakeholders were mailed a notification on July 19, 2010. The letters are contained in Appendix B along with the Notices published in the *County Weekly News*.

The Notice and Draft Project Description Report (PDR) were posted on the Project website, northlandpower.ca/bellevillenorth, at the same time the Notice was published. The PDR was also made available for public review at the Prince Edward County municipal office 30 days prior to the first Public Meeting.

The first Public Meeting was held on Wednesday, August 25 2010 at 6:00pm until 9:00p.m. at the Allisonville Townhall, (11 Dutch Road, (off County Road 2) Prince Edward County, ON) with a purpose to achieve the following:

- introduce Northland and the Project to the community
- identify the Project contacts and avenues for comment or question submission

- solicit feedback on the Draft PDR

A total of twenty eight (28) people signed in at the first Public Meeting.

Project information was provided on display boards set up at the Public Meeting and handouts of the display boards were made available to the public. Appendix C contains a copy of the display boards. A paper copy of the PDR was also made available for review at the first Public Meeting.

During the Public Meeting, questions were answered by Northland (e.g., typically Project specific questions) or by Hatch (e.g., typically REA process or environmental impact questions).

Feedback obtained from the first Public Meeting was used to provide direction for the scope of the assessment and ensure that local issues would be addressed as appropriate. Comment sheets were offered at the Public Meeting to all attendees as means to obtain and record comments and concerns as well as pertinent background information about the Project location.

Ten (10) comment sheets were received during or following the first Public Meeting (see Section 2.4 for comments and responses). A copy of the comment sheets are found in Appendix C.

2.3.2 Final Public Meeting and Notice

The Notice of Final Public Meeting was published 60 days prior to the event in *The County Weekly News* on Thursday, March 24, 2011 and again on Thursday, April 28, 2011. *The County Weekly News* is a local paper published in Picton and circulates Prince Edward County. Following the publication on March 24, 2011, a member of the public made a request that we name the hall the "Wellington Elks Hall – Allisonville" as that is a more accurate name for the venue. This change was made for the April 28, 2011 advertisement.

An updated mailing list, including any newly identified names and contact details was used for the mail out (see Appendix A). A total of thirty two (32) stakeholders were issued covering letters and the Notice of Public Meeting on March 23, 2011. A copy of this Notice as it appeared in *The County Weekly News* and a copy of the letter that accompanied the Notice are provided in Appendix B.

The purpose of the final Public Meeting was to solicit feedback on the content and the findings of the reports prepared for the Project. Draft copies of the Project documents required to be prepared under the REA process were made available for public review on Tuesday, March 22, 2011, at the Ameliasburg Branch of the Prince Edward County Library. Copies were posted on the Project website. These Project documents included the following:

- Executive Summary (including summaries of the following documents and Letters of Confirmation)
- Project Description Report
- Construction Plan Report
- Design and Operations Report
- Decommissioning Plan Report
- Noise Study Report

- Stage 1 and 2 Archaeological Assessment Report
- Water Body Assessment Reports
- Natural Heritage Assessment Reports.

The final Public Meeting was held on Wednesday, May 25, 2011 from 6:00pm to 8:00p.m. at the Wellington Elks Hall – Allisonville located at 11 Dutch Road, (off County Road 2) Prince Edward County, ON with a purpose to achieve the following:

- provide the community with detailed information about the Project
- solicit feedback on the content and the findings of the REA reports
- answer any questions about the Project
- obtain any comments or concerns with respect to the Project

A total of 11 people signed in at the final Public Meeting.

The final Public Meeting followed an open house format with project details presented on display boards and printed copies available to visitors. This approach allowed for one-on-one discussions between representatives of Northland, Hatch and the public. Notes on comments from the Public were taken by the representatives of Northland and Hatch present at the meeting. Display boards provided general information on Northland and the Project, with an overview of the information found in the Project documents. Copies of the Project documents were available for review and discussion at the final Public Meeting. Copies of the display boards can be found in Appendix D.

Questions at the final Public Meeting were answered by both Northland and Hatch. Comment sheets were available at the Public Meeting to be filled in by the participants if they chose to do so. Northland and Hatch staff encouraged attendees to fill out comment sheets. Zero (0) comment sheets were completed at the final Public Meeting, and though individuals in attendance took home copies of the comment sheets, none have been received to date. Appendix D contains a sample copy of the comment sheets.

Table 2.1 provides information on how these comments were addressed and incorporated into the finalization for these reports, as appropriate.

2.3.3 Other Public Consultation

The public was encouraged to communicate with the representatives from Northland and Hatch outside of the Public Meetings via any of the following forms of communication:

- email correspondence
- phone calls
- mail
- fax

Full details on all correspondence received from the Public are provided in Appendix E. Several emails have been received from the public and their comments, concerns or questions are discussed in Table 2.1.

2.4 Public Comments and Concerns

The comments and/or concerns that were obtained from the public (e.g., comment sheets, emails, verbal discussions, etc) during the Project consultation process along with the response and/or resulting actions taken to address each concern are provided in Table 2.1. Where applicable, the response also provides reference to where more detail can be found in the Project documents prepared under the REA Process. Additionally, any changes to the Project documents and/or to the Project made in response to public comments/concerns are identified in Table 2.1.

Table 2.1 Comments/Concerns from Public and Responses

Category of Comment or Concern	Comment or Concern	Response: Mitigation, Resolution and/or Amendment to Project
Comments/Questions Received via Email Prior to First Public Meeting		
Naming of Belleville Projects	Expressions of support for the Project and inquiry regarding the naming of the Projects.	Comments noted, and explanation that the name selection was made in light of the relevant transmission station the Projects would be connected to (i.e. the Belleville T.S.).
Comments/Questions Received via Comment Sheets at First Public Meeting – August 24, 2010		
Construction	"I am concerned with construction impacts on the residents of Burr Rd"	Mitigation measures intended to ensure that construction impacts are minimized are identified in the Construction Plan Report. Pertinent are Sections 4.7 to 4.10 which address Air Quality and Noise, Traffic, Municipal Roadways, and Public and Construction Site Safety in the Vicinity of the Project.
Renewable Energy Approvals Process	"More information is needed about this Project. Size, height, distance from road, etc, noise level"	At the time of this comment, Northland was in the early stages of the Project's design. Information regarding the Project can be found in the Design and Operations Report and Noise Assessment Report.
	"Environmental Impact Study been completed"	A Natural Heritage Environmental Impact Study has been completed for the Project.
Project Design	"45, 000 – 55, 000 solar panels – how many big units?"	At this stage of the design, two 625-kW inverters are being considered, these will be housed inside a common enclosure, with one 1250-kW intermediate transformer immediately adjacent and outside of the enclosure. The main step-up transformer will be in the substation yard. The substation electrical building will house the electrical control and monitoring systems. It is estimated that approximately 50,000 solar panels will be used for the facility

Category of Comment or Concern	Comment or Concern	Response: Mitigation, Resolution and/or Amendment to Project
	<p>“the rep. wasn’t very informed as to what type of panels and size and height of panels”</p>	<p>Comment noted. At the time of this comment, Northland was in the early stages of the Project’s design, and therefore details, such as Project layout, were not available.</p> <p>At this stage, Northland is completing market research and negotiating with different manufactures for supply of PV modules. As such, specific details such as dimensions, exact number of modules, spacing and setting of the modules are not available. However, a 280-W multi-crystalline solar module has been selected as a representative module.</p> <p>The representative 280-W module’s dimensions are 1956 mm by 992 mm by 50 mm, and each weighs 27 kg. Each module contains 72 multi-crystalline silicon solar cells (6 by 12), and the cells occupy an area of 156 mm by 156 mm. The module is covered by a 4-mm thick tempered glass, and framed in anodized aluminum alloy.</p>
	<p>“How far back from the road the panels will start?”</p>	<p>Based on the current Project layout, the panels will be located more than 200m from Burr Rd.</p>
Transmission/ Distribution Network	<p>“Power lines to distribute power to Grid”</p>	<p>Electricity generated by solar photovoltaic modules from each array will be converted from direct current (DC) to alternating current (AC) by an inverter and subsequently stepped up from a medium voltage to 44 kV in order to connect to the nearby distribution line. The connection point will be on Burr Road, immediately in front of the Project site. The Project will connect to a distribution line that Hydro One Inc. will extend approximately 2 km from its current location. The extension of the distribution line is being permitted separately from the Belleville North Solar Project by Hydro One Inc.</p>
	<p>“I am concerned with the upgrade or effect on the existing power line”</p>	<p>Hydro One will determine what upgrades and/or expansions are required to connect the Project to the existing distribution network.</p>
Sound Levels	<p>“Noise levels produced (my son lives within the border area)”</p>	<p>The Project is required to meet provincial noise limits and a Noise Assessment Report has been completed for the Project to ensure that emissions during operations meet these limits.</p>

Category of Comment or Concern	Comment or Concern	Response: Mitigation, Resolution and/or Amendment to Project
	"Noise level of inverters"	The Project is required to meet provincial noise limits and a Noise Assessment Report has been completed for the Project to ensure that emissions during operations meet these limits.
Public Safety	"Will it be a safe, secure site for children?"	The site will be gated and fenced, with additional security measures installed as required by Northland.
Health	"What are the long term health effects, if any, of the power going from the inverters"	Electrical equipment used in association with the solar project are present throughout Ontario in association with electrical infrastructure. No health effects of these types of equipment have been noted within the scientific literature.
	"Are there any long term health effects?"	<p>The use of solar energy will contribute to the province's ability to retire coal fired power plants, and thus will contribute to the improvement of air quality throughout the province.</p> <p>Electrical equipment used in association with the solar project is present throughout Ontario in association with electrical infrastructure. No health effects of these types of equipment have been noted within the scientific literature.</p>
	"Health: are there any health concerns for people living in the study area?"	Electrical equipment used in association with the solar project is present throughout Ontario in association with electrical infrastructure. No health effects of these types of equipment have been noted within the scientific literature. It is not anticipated that the Project will impact human health.
Property Values	"Property Value decrease"	<p>There is no evidence to suggest that an impact on property value occurs as a result of proximity to solar energy projects. Solar projects have no emissions and a low height profile, and as such, have a relatively minor visual impact on adjacent properties.</p> <p>Furthermore, the Belleville North Solar Project is set back from neighbouring properties. A communications plan has been developed for the Project. Should concerns be raised during the Project construction or operations phases, Northland will meet with the concerned individual(s) to discuss their concerns and determine if additional mitigation is warranted.</p>

Category of Comment or Concern	Comment or Concern	Response: Mitigation, Resolution and/or Amendment to Project
Visual/ Aesthetics	“Can you please bring an accurate of a visual of what you think the project will look like to scale”	<p>At the time of this comment, Northland was in the early stages of the Project’s design and had not yet produced a visual rendering of the project to solicit public input.</p> <p>A visual rendering was presented on display boards at the final Public Meeting for the Project on May 25, 2011.</p>
	“Is there any way we could see a computer generated photo of what the finished project would look like.”	<p>At the time of this comment, Northland was in the early stages of the Project’s design and had not yet produced a visual rendering of the project to solicit public input.</p> <p>A visual rendering was presented on display boards at the final Public Meeting for the Project on May 25, 2011.</p>
	“Visual impacts- of both the panels and the transmission stations – will a new line be planted”	<p>The change in visual landscape is considered in Table 5.1 in the Design and Operations Report.</p> <p>In addition, a communications plan has been developed for the Project. Should concerns be raised during the Project construction or operations phases, Northland will meet with the concerned individual(s) to discuss their concerns and determine if additional mitigation is warranted.</p> <p>Electricity generated by solar photovoltaic modules from each array will be converted from direct current (DC) to alternating current (AC) by an inverter and subsequently stepped up from a medium voltage to 44 kV in order to connect to the nearby distribution line. The -connection point will be on Burr Road, immediately in front of the Project site. The Project will connect to a distribution line that Hydro One Inc. will extend approximately 2 km from its current location. The extensions of the distribution line is being permitted separately from the Belleville North Solar Project by Hydro One Inc.</p>
	“We would like the panel as low as possible. The higher they are, the fewer number you would be able to install, because of the shadows created”	<p>Comment noted. Solar panel heights above ground are primarily driven by local snow depths, and the intent is to maintain heights as low as is feasible.</p>

Category of Comment or Concern	Comment or Concern	Response: Mitigation, Resolution and/or Amendment to Project
	<p>“Ugliness of panels are you really making that much power to warrant the upset to the area?”</p>	<p>The change in visual landscape is considered in Table 5.1 in the Design and Operations Report. Based on the current Project layout, the panels will be located more than 200m from Burr Rd.</p> <p>In addition, a communications plan has been developed for the Project. Should concerns be raised during the Project construction or operations phases, Northland will meet with the concerned individual(s) to discuss their concerns and determine if additional mitigation is warranted.</p> <p>The OPA has invited Northland and any other energy company to propose solar projects that fit its requirements. This project was proposed to the OPA by Northland, and the OPA selected it as a project it would contract for under the feed-in tariff program.</p>
	<p>“Cosmetic looks of both Projects especially Belleville North”</p>	<p>At the time of this comment, Northland was in the early stages of the Project’s design and had not yet produced a visual rendering of the project to solicit public input.</p> <p>A visual rendering was presented on display boards at the final Public Meeting for the Project on May 25, 2011. Based on the current Project layout, the panels will be located more than 200m from Burr Rd</p> <p>A communications plan has been developed for the Project. Should concerns be raised during the Project construction or operations phases, Northland will meet with the concerned individual(s) to discuss their concerns and determine if additional mitigation is warranted.</p>

Category of Comment or Concern	Comment or Concern	Response: Mitigation, Resolution and/or Amendment to Project
	<p>"I am concerned with the aesthetics of the proposed project"</p>	<p>At the time of this comment, Northland was in the early stages of the Project's design and had not yet produced a visual rendering of the project to solicit public input.</p> <p>A visual rendering was presented on display boards at the final Public Meeting for the Project on May 25, 2011. Based on the current Project layout, the panels will be located more than 200m from Burr Rd.</p> <p>A communications plan has been developed for the Project. Should concerns be raised during the Project construction or operations phases, Northland will meet with the concerned individual(s) to discuss their concerns and determine if additional mitigation is warranted.</p>
Traffic	<p>"Traffic during construction"</p>	<p>Mitigation measures to minimize potential impacts to traffic during construction are detailed in Section 4.8 of the Construction Plan Report.</p>
Agricultural	<p>"I am concerned that the agricultural land is being taken out of production."</p>	<p>Northland has met all requirements of the OPA with respect to the protection of prime agricultural land.</p>
Surface Water Quality	<p>"Surface water quality to Melville Creek"</p>	<p>Potential impacts to surface water are assessed and mitigated within the Waterbodies Environmental Impact Study and the Construction Plan Report. The results of the assessment were that no impact to surface water quality is anticipated.</p>

Category of Comment or Concern	Comment or Concern	Response: Mitigation, Resolution and/or Amendment to Project
Wildlife	"I don't get a good sense that you have addressed the species at risk at either site"	<p>At the time this comment was received, environmental surveys and investigations had not been completed. Since that time, environmental surveys to determine the species on site and within 120 m have been completed and are identified within the Natural Heritage Site Investigation Report. Potential impacts to wildlife and plants are assessed, and mitigation measures identified, within the Natural Heritage Environmental Impact Study and the Construction Plan Report. Please see these reports, available at the Project's website, for comprehensive information on the surveys, results and environmental impacts.</p> <p>Potential impacts to species listed as Threatened and Endangered on the Species at Risk in Ontario list are being addressed separately with the Ministry of Natural Resources. At this time, it is not expected that Project will impact these species or their habitats.</p>
Decommissioning	"If Project is not a success (ie. Bankrupt) who looks after the de-commissioning of the Project"	Northland will be responsible for decommissioning the site in accordance with the requirements of the contract with the landowner; the procedures noted in the Decommissioning Plan Report; and any Terms and Conditions of the REA Approval (if obtained).
Other Comments/Concerns	"Location to Mt. View Airport"	Northland is consulting with the Department of National Defense regarding the location of the Project in proximity to Mount View Airport.
	"Didn't answer questions that clearly"	Comment noted. At the time of this comment, Northland was in the early stages of the Project's design and therefore Project details were not available..
	"The residents of Burr Road, do not need a solar farm in the area, as there are several homes located near the location."	Comment noted. The current Project design is setback from neighbouring residences.

Category of Comment or Concern	Comment or Concern	Response: Mitigation, Resolution and/or Amendment to Project
	“Is this a project that will be expanded?”	The Belleville North Solar Project is a 10 MW solar project, the maximum size permitted under the Feed in Tariff program. As a result, in the current regulatory and legislative framework, it is not possible for Northland to expand this Project.
Comments/Questions Received via Email Prior to Final Public Meeting		
Project Design	“Exactly where on the project site are the solar panels and security fencing proposed to be located? The Project Location Map on your web site indicates a different project site location than the project site location noted in the hand out provided at the first public meeting August 25th at the Allistonville Town Hall.”	The Project Location Map provided on the website identifies the extent of lands available for the Project (i.e., those that have will be leased for the Project). The mapping provided in the handout at the first public meeting more accurately depicts where within the boundary of available lands solar panels are likely to be located.
Project Design	“Where is the security fencing proposed to be located?”	At the time of this correspondence the security fencing was proposed to be located primarily around the perimeter of the solar panel footprint (i.e., north of the watercourse), with the exception that some fencing may be required south of the watercourse in the southeastern portion of the leased lands.
Comments/Questions Received at Final Public Meeting – May 25, 2011		
Decommissioning	Concerns around decommissioning if Project goes bankrupt	Northland will be responsible for decommissioning the site in accordance with the requirements of the contract with the landowner; the procedures noted in the Decommissioning Plan Report; and any Terms and Conditions of the REA Approval (if obtained).

3. Consultation with Agencies

3.1 Agencies

Consultation with relevant government agencies including provincial ministries, local municipalities and others was completed as per the REA Regulation and MOE's "Guidance for Preparing the Consultation Report". The following agencies were consulted:

- Department of National Defense
- Ministry of the Environment
- Ministry of Natural Resources
- Ministry of Tourism and Culture
- Prince Edward County
- Quinte Conservation Authority

The following section provides the details of the consultation completed with each agency.

3.1.1 *Department of National Defence*

- On July 19, 2010 the Notice of Proposal to Engage in a Renewable Energy Project and Public Meeting was sent to the Department of National Defence. The Notice of Final Public Meeting was sent on March 23, 2011.
- Hatch received correspondence from the Department of National Defence on September 13, 2010.
- Northland Power followed up with the Department of National Defence in the fall of 2010.
- No additional correspondence from Department of National Defence has been received.

Appendix F contains copies of correspondence between Northland/Hatch and the DND.

3.1.2 *Ontario Ministry of Environment*

- Draft Project Description Reports were sent to the MOE on April 5, 2010 in order to commence the REA process. This step kicks off the REA process by requesting from the MOE the list of Aboriginal communities with whom Northland will be required to consult.
- Representatives of Northland and Hatch met with staff from the MOE's Head Office in Toronto, Ontario on April 16, 2010 to discuss the requirements of the Renewable Energy Approvals Process. Northland met with the Director of the Approvals Program and the Supervisor of Renewable Energy Approvals. The purpose of the meeting was to gain greater clarity on the timing and requirements of several aspects of the REA process.
- The MOE provided comments on the Draft Project Description Report in early May 2010. The Project Description Report was revised to meet these comments, and provided to the MOE on May 11, 2010.

- On July 19, 2010 the Notice of Proposal to Engage in a Renewable Energy Project and Public Meeting was sent to the Ministry of the Environment. The Notice of Final Public Meeting was sent on March 23, 2011.
- On October 6, 2010, representatives of Northland and Hatch met with the MOE's Director of Approvals at the MOE's Head Office in Toronto, Ontario. The purpose of the meeting was to discuss, in greater detail, the requirements of the REA Application so that Northland would have clear understanding of the MOE's expectations.

Appendix F contains copies of correspondence between Hatch and the MOE.

3.1.3 Ontario Ministry of Natural Resources

- A meeting was requested by Hatch and arranged for May 25, 2010. Prior to the meeting, copies of the Project Description Reports were provided to the MNR for review on May 21, 2010.
- At the meeting on May 28, 2010, the following people were in attendance at the meeting; Sean Male (Hatch), Tom Hockin (Northland Power), Eric Prevost (MNR), Leala Pomfret (MNR) and a MNR Planning Intern . The following items were discussed at the meeting:
 - Project description.
 - Natural features present on and near the Project location – MNR noted the presence of wetlands and woodlands, and discussions were held around survey timing and focus for Natural Heritage investigations.
- On August 5, 2010, copies of the Natural Heritage Records Review, Site Investigation Report, Evaluation of Significance, and Environmental Impact Study were provided to MNR Kemptville for review.
- In a letter dated August 16, 2010, received on September 1, 2010, Hatch received comments from MNR on the Natural Heritage reports. A conference call was held with on September 21, 2010 to discuss the comments in further detail. Revised reports addressing these comments were provided to MNR on September 24th, 2010.
- On October 25, 2010, MNR provided additional comments on the Natural Heritage reports. Updated reports that addressed these comments were provided to MNR on November 18, 2010.
- On January 15, 2011, a meeting was held to discuss the comments in further detail. In attendance at the meeting were Sean Male (Hatch), Tom Hockin (Northland Power), Eric Prevost (MNR) and Sarah Lewis (MNR). Revised reports addressing these comments were provided to MNR on January 31st, 2011. An omission was noted in the EOS report by MNR and an updated report was provided on February 8, 2011
- In late February 2011, MNR provided additional comments on the Natural Heritage reports. Updated reports that addressed these comments were provided to MNR on February 28, 2011.
- MNR provided their confirmation letter of the Natural Heritage Reports on March 14, 2011.

Appendix F contains copies of correspondence between Hatch and the MNR.

3.1.4 Ontario Ministry of Tourism and Culture

- Archaeological Research Associates Ltd. (ARA) submitted an Archaeological Assessment Report entitled 'Stage 1 and 2 Archaeological Assessment Belleville North Solar Project' to the Ontario Ministry of Tourism and Culture (MTC) on August 27, 2010. The Stage 2 Archaeological Assessment Report recommended that the Project be allowed to continue without any further heritage concerns.
- On September 24, 2010, the MTC responded that the archaeological assessment undertaken for the Project complies with the Ontario Heritage Act's licensing requirements, including the license terms and conditions and the Ministry's 1993 Archaeological Assessment Technical Guidelines. This letter is included in Appendix F.

3.1.5 Prince Edward County

- On June 16, 2010, Tom Hockin (Northland) and Sean Male (Hatch), met with representatives of Prince Edward County, including among others, Jo-Anne Egan (Manager of Planning), Gerry Murphy (Commissioner of Planning), Dan Taylor (Economic Development Officer), Richard Shannon (Chief Administrative Officer, and the Fire Chief. The following items were discussed at the meeting:
 - Northland Power provided an overview of the Projects
 - Prince Edward County staff identified a concern around potential for impacts to municipal road surfaces. Northland indicated that they will work with the County to ensure concerns are addressed
 - Prince Edward County staff confirmed that there is no tree-cutting by-law within the County
 - Prince Edward County staff recommended contacting Tim Trustham of the Quinte Conservation Authority (see Section 3.1.6 for Quinte Conservation Authority consultation activities)
 - Prince Edward County staff indicated that a building permit may not be required
 - Prince Edward County staff indicated that they have a noise by-law with construction activity restrictions
 - Prince Edward County staff provided advice on locations for public meetings and area newspapers.
- On July 19, 2010, the Notice of Proposal to Engage in a Renewable Energy Project and Public Meeting was sent to the Township, along with copies of the Project Description Reports. The Notice of Final Public Meeting, along with copies of the supporting documents, was sent on March 23, 2011.
- The completed Municipal Consultation Form was provided to Hatch by the Township on May 12, 2011. A copy of the form is included in Appendix G.
- On May 25th, Northland received the municipal consultation form from Jo-Anne Egan, Manager of Planning, for Prince Edward County.
- On June 3rd, 2011, Northland responded to Jo-Anne Egan to discuss the municipal consultation form. Northland suggested a meeting with the county's Renewable Energy Team to review the county's comments from the municipal consultation form. The parties agreed that items 9-12 of their "Matters to be Addressed" are better suited for the county to take up directly with the

province’s Renewable Energy Facilitation Office (REFO). A meeting is planned to be scheduled for later in the summer of 2011 to discuss the remaining items.

Appendix G contains any correspondence with the municipality.

3.1.6 *Quinte Conservation Authority*

- Hatch submitted a Property Inquiry request to the Quinte Conservation Authority (QCA) in June 2010 for information on natural heritage and water body features on or within 120 m of the Project location.
- Tim Trustham, Ecologist/Planner with the Quinte Conservation Authority, contacted Sean Male (Hatch) in November 2010 indicating that the Conservation Authority has no specific records relating to natural heritage features or waterbodies on or within 120 m of the Project location.

Appendix F contains copies of correspondence between Hatch and the QCA.

3.2 Agency Comments and Concerns

Agency comments and concerns are included in Table 3.1, which also indicates how the Project and/or document were modified to meet the agency comments/concerns.

Table 3.1 Comments/Concern From Agencies and Responses

Agency	Comment/Concern	Response: Mitigation, Resolution and/or Amendment to Project
Department of National Defense	Possible negative impact on flying operations for various aircraft operated out of Mountain View airport. One of the concerns is reflection of solar rays on landing and taking off of aircraft. As these times are a critical time of flight, any distraction to aircraft operators could have safety implications.	<p>A special coating is applied to the solar modules in order to increase absorption of solar energy and minimize light reflection. This will minimize the impact that reflections from the modules will have on the neighbouring residents or passing motorists/air traffic.</p> <p>Northland Power provided a recent report by the U.S. Federal Aviation Administration, titled: “Technical Guidance for Evaluating Solar Technologies on Airports”. This is a thorough and extensive study which has an in depth chapter on Regulatory and Safety considerations. This chapter goes in depth on solar reflectivity as well communication system interference.</p>

Agency	Comment/Concern	Response: Mitigation, Resolution and/or Amendment to Project
		No further questions have been received from representatives of CFD Mountainview since this information was provided.
Department of National Defense	Also CFD Mountain View is used for deploying various Heavy Loads out of aircraft and bringing them to the ground with the use of parachutes. As the landing zone is close to this northern array, a chute failure could result in the destruction of a lot of solar panels.	CFD Mountain View suggested that they may have to augment their flight patterns and drop zones. Northland has offered its assistance in this respect and will continue to consult with the DND.
Ontario Ministry of the Environment	None to date.	None required
Ontario Ministry of Natural Resources	Various comments were provided regarding the Natural Heritage reports.	All comments were addressed by revising the Natural Heritage Reports.
Ontario Ministry of Tourism and Culture	In consultation with the MTC, it was recommended that the project proceed without further archaeological concerns	None required.
Quinte Conservation Authority	None to date	None required
Prince Edward County	<p>1. Identify the following additional Municipal approvals, permits and authorizations:</p> <ul style="list-style-type: none"> a. Overweight/oversize load permits. An agreement between the Municipality and the proponent may be required to describe the approved route, terms of travel and the nature of the repairs etc. Heavy equipment movements on Burr Road should be scheduled to avoid the reduced load period. Exemptions to travel during reduced load periods would not likely be granted for these activities. b. Entrance location and construction permit. <p>Approval of the County for any pole alignment and works within the County road allowance.</p>	Northland acknowledges that several permits and authorizations from the County will be required for construction to proceed. Northland will work with the County to ensure all appropriate permits and authorizations are obtained.

Agency	Comment/Concern	Response: Mitigation, Resolution and/or Amendment to Project
	2. Require a pre-development agreement between the Municipality and the Proponent for the recovery of municipal costs associated with the project review, approval, construction, operation and decommissioning.	Northland is continuing to work with the County to ensure that concerns regarding administrative cost recovery are addressed.
	3. Require a Traffic Management Plan to be developed by the Proponent in collaboration with the Public Works Department, for review and approval by the Commissioner of Public Works.	Northland will develop a Traffic Management Plan in collaboration with the Public Works Department, and will obtain approval of said plan, prior to construction.
	4. Require an agreement between the Municipality and the Proponent for the identification of haul roads, the determination of their pre-construction condition, all widening and strengthening requirements, development of an approvals process for any municipal road improvements, assessment and allocation of damages to the road network, responsibility for repairing damages and the deposit with the Municipality of sufficient security to cover the cost of any damages.	Northland is continuing to work with the County to ensure that concerns regarding roadways are addressed.
	5. Require a Stormwater Management Plan including any stormwater attenuation facilities to manage soil drainage and stormwater on site to mitigate off-site run-off impacts on downstream properties and environmental areas including local wetlands for review and approval by the Public Works Commissioner.	Northland will develop a Stormwater Management Plan, prior to construction.
	6. Require a Grading and Soil Containment and Contingency Plan to be developed in collaboration with the Commissioner of Public Works to manage the movement of soil during all pre-construction and construction phases of the project.	Northland will develop a Grading and Soil Containment and Contingency Plan in collaboration with the Commissioner of Public Works prior to construction.
	7. Require a Driver Reflectivity Analysis to determine the impact, if any, of solar glare on passing drivers and appropriate mitigation measures.	Northland will work with the municipality to identify existing reports on solar reflectivity (ie. U.S. Federal Aviation

Agency	Comment/Concern	Response: Mitigation, Resolution and/or Amendment to Project
		Administration) and if necessary, other aspects of a Driver Reflectivity Analysis. Appropriate mitigation measures will be adopted if deemed necessary by the parties.
	8. Require an Emergency Response Plan to be developed by the Proponent in collaboration with the Fire Chief that takes into consideration such matters as the volunteer base of the Fire Department with respect to any medical first response or fire call, especially during the construction phase; provides a detailed a detailed protocol to streamline Municipal personnel action whenever they are required on site; provides key 24-7 contact information to be utilized during any mishap; and actively maintain the contact information beginning at the start of the construction phase and continued for the duration of the project.	Northland will develop an Emergency Response Plan in collaboration with the Fire Chief prior to construction.
	9. That the Province develop a regulation requiring annual payment to the municipality from renewable energy projects in the amount of \$7,500. per megawatt plus profit sharing based upon 4 % of output plus annual cost of living, exclusive of regular taxes and recovery of costs.	This request is beyond the control of Northland Power.
	10. That the Province require the decommissioning plan to also address and include plans for repowering to provide ongoing operations of the subject site.	This request is beyond the control of Northland Power.
	11. That the Province create a rehabilitation security fund similar to the Aggregate Resources Act to recover the decommissioning of the site should the owner be delinquent.	This request is beyond the control of Northland Power.
	12. That the Province require identification of and mitigation measures to address the impact on the County's economy, particularly tourism-dependent business sector (e.g. retail, hospitality) during the construction phase of May to October, 2012.	This request is beyond the control of Northland Power.

Agency	Comment/Concern	Response: Mitigation, Resolution and/or Amendment to Project
	13. Encourage the development of a year-round renewable energy interpretative/education centre at a location mutually agreed upon by all parties.	This request is beyond the control of Northland Power.

4. Consultation with Aboriginal Communities

It is the Crown's fiduciary obligation to conduct meaningful consultation in good faith with First Nation and Aboriginal communities. The Crown has delegated some of the consultation to the Proponent of renewable energy projects as per the REA Regulation. Pursuant to REA Regulation, Proponents are required to engage meaningfully with Aboriginal groups regarding traditional ecological knowledge, traditional land use, land claims and other interests and issues with respect to the development of the Project.

It is noted that at the time of submittal of this report, MOE stated that an Aboriginal consultation document, titled "*Aboriginal Consultation Guide for Renewable Energy Projects Governed Under O.Reg.359/09: Aboriginal Consultation Guide*" was being drafted to be released at a later date, but is not currently publicly available. As a result, the "*Technical Bulletin Five - Guidance for Preparing the Consultation Report*" (MOE, 2010) was used as a reference for meeting Aboriginal consultation requirements.

The following provides information related to the Aboriginal consultation completed for the Project.

4.1 Aboriginal Community Consultation List

On March 22, 2010, Northland Power provided the MOE with the Draft Project Description Report. As per the REA Regulation, the submission of the Project Description Report is required in order for the MOE to provide a list of the Aboriginal communities that Northland is to consult with.

The MOE provided comments on the Draft Project Description Report in early May 2010. The Project Description Report was revised to meet these comments, and provided to the MOE on May 11, 2010.

On July 9, 2010 MOE provided the list of Aboriginal communities, which is included in Appendix H.

4.2 Consultation Activities

4.2.1 *First Public Meeting and Notice*

The combined Notice of Proposal to Engage in a Project and Notice of a Public Meeting was sent to the Aboriginal communities on the MOE list on July 19, 2010.

With the Notice, a letter was included which, as per the REA Regulation, requested written information regarding any potential impact on treaty or constitutional protected lands and possible mitigating measures. Appendix I contains a sample of the letters.

The Notice and Draft Project Description Report were posted on the Project website (northlandpower.ca/bellevillenorth) at the same time the Notice was published. The PDR was also made available for public review at the Prince Edward County municipal office 30 days prior to the first Public Meeting. No attendees of the first Public Meeting identified themselves as a member of a First Nation community.

4.2.2 *Final Public Meeting and Notice*

On March 23, 2011, after all Project documents were drafted and letters of confirmation were received from MNR and MTC, the Aboriginal communities on the MOE's list were sent summaries of all reports and copies of all Project Reports, as per the requirements of REA Regulation.

Additionally, all Aboriginal communities were sent the Notice of Final Public Meeting and an accompanying letter on March 23, 2011. Appendix I contains copies of the Notice and the letters.

Section 2.3.2 provides the details of the final Public Meeting. No attendees at the final Public Meeting identified themselves as members of any Aboriginal community.

4.3 Other Aboriginal Consultation Activities

The details of the communications and activities for each Aboriginal community are contained in Table 4.1. Appendix J contains any correspondence with the Aboriginal communities.

Table 4.1 Details of Additional Consultation Activities

Community/Group	Details of Additional Consultation Activities
Alderville First Nation	<ul style="list-style-type: none"> • Northland spoke with Dave Simpson of Alderville First Nation on November 29, 2010. The representative of the First Nation was interested to see the Archaeological reports. Waiting on confirmation from the MTC. • Hatch left a voicemail for the First Nation on January 19, 2010. • Hatch contacted the First Nation by telephone on February 3, 2011. Hatch confirmed they will send a copy of the archaeology reports and confirmation letters on CD (sent on Feb 14, 2011). • Hatch left a voicemail with Dave Simpson on March 4, 2011 requesting confirmation of receipt of Arch. Reports and advising of the upcoming Public Meeting on March 7, 2011. Dave Simpson returned Hatch’s call and indicated that they did receive copies of the Arch. Reports. Dave Simpson requested that all future reports be sent on CD. • On April 5th, a letter from the Alderville First Nation was received indicating that the Project would have minimal impact on the First Nation, and requesting that they be kept informed of ongoing developments.

Community/Group	Details of Additional Consultation Activities
Hiawatha First Nation	<ul style="list-style-type: none"> • Northland left a voicemail with the Hiawatha First Nation on November 29, 2010. • Hatch left a voicemail with the First Nation on January 19, 2011. • Hatch spoke with Diana Sheridan from the Consultation Group on January 24, 2011. Diana Sheridan confirmed that she had received the reports for the Crosby and Rideau Lakes projects. Pertinent to the Belleville North Project she stated that she would aim to provide feedback by Final Public Meeting. She stated a lot will depend on whether Projects fall within Williams Treaty Land Settlement Area. • On January 26, 2011 Hatch received an email stating that the William Treaty Group falls outside of the Crosby and Rideau Lakes Project areas but they would still like to be informed of project developments. • On February 3, 2011 Hatch responded via email expressing thanks for the correspondence, and requesting whether a similar determination had been made on Belleville North. Hatch offered to send out copies of the PDRs if required. • On February 4, 2011 Hatch received e-mail from Diane Sheridan requesting the PDR's. Hatch responded sending an e-mail with PDR's attached. • On February 14, 2011 hard copies of the archaeological reports was sent to Diane Sheridan • On March 4, 2011 Hatch confirmed reports had been received and extended invitation to upcoming PIC once more.
	<ul style="list-style-type: none"> • On April 15, 2011 Hatch e-mailed Diane Sheridan requesting a written response regarding the Belleville North and South Projects. • On May 2nd, a letter from the Hiawatha First Nation was received indicating that the Project would have minimal impact on the First Nation, and requesting that they be kept informed of ongoing developments.
Curve Lake First Nation	<ul style="list-style-type: none"> • Hatch left a voicemail with the First Nation on February 3, 2011. • On February 16, 2011 SKM spoke with a representative of the Curve Lake First Nation. The First Nation had forwarded information to the "Duty to Consult" group. The First Nation would follow-up to confirm whether the reports had been received and reviewed. • On March 29, 2011 Hatch attempted to contact the Duty to Consult Workers (Land Resource Consultation Workers). Hatch spoke with a receptionist who advised they will be back in office the next day. • On March 30, 2011 Hatch spoke with a Land Resource Consultation Worker. She indicated that we should be receiving responses in the near future as they have been authorized now to provide responses by Chief and Council.

Community/Group	Details of Additional Consultation Activities
	<ul style="list-style-type: none"> On March 31, 2011 Hatch received correspondence regarding the Belleville North projects which acknowledged no concerns, and requesting to be kept informed of ongoing developments.
Kawartha Nishnawbe	<ul style="list-style-type: none"> Beginning on February 3, 2011 Hatch left numerous voicemail messages with the Kawartha Nishnawbe First Nation regarding the Belleville North Project. On March 4, 2011 Hatch left a voicemail including an invitation to upcoming public meeting. On March 25, 2011 Hatch left a voicemail indicating that Northland will be submitting their REA application to MOE on April 5, 2011 and would welcome input prior to submission, or in future. On April 15, 2011 Hatch placed a telephone call to the First Nation but no answer was received.
Mohawks of the Bay of Quinte	<ul style="list-style-type: none"> On November 29, 2011 Northland spoke with The Mohawks of the Bay of Quinte First Nation and agreed to email copies of the PDRs. The First Nation indicated that if the projects are far they will send a letter stating so. On January 19, 2011 Hatch left a voicemail On February 3, 2011 Hatch spoke with the Environment Department of the First Nation whom indicated that it was likely that the projects in Prince Edward County would be of interest, but that they would wait for the REA document release before providing comment. She indicated that the Glendale Project would be more of interest to the Akwesasne. On April 15, 2011 Hatch spoke with the Environment Department whom acknowledged receiving the reports, but said she hadn't a chance to look at them. Hatch indicated the timing of the final Public Meeting and that we would be providing a consultation report to the MOE shortly thereafter. Hatch also indicated the desire to include a response from the First Nation with that report, but that this would not end consultation with the community. On May 18, 2011 Hatch left a voicemail message requesting an update. On June 15, 2011, Hatch spoke with the Environment Department, who acknowledged that they had no comments at this time, and would be issuing a written response in the near future.

Community/Group	Details of Additional Consultation Activities
Métis Nation of Ontario	<ul style="list-style-type: none"> • Northland/Hatch contacted James Wagar, Consultation Assessment Coordinator for the Metis Nation of Ontario on January 11, 2011. He provided a list of questions around the Métis broad area of interests. • Hatch provided a response to James Wagar’s questions in a memorandum sent via email on February 3, 2011. • Hatch contacted James Wagar on February 16, 2011 to confirm that memorandum had been received. • James Wagar responded on April 26, 2011 indicating that the Ottawa Region Metis Council was interested in meeting with Northland to discuss the Belleville North and South Solar Projects, among other projects being proposed by Northland in eastern Ontario. Please see additional discussion of these consultation activities below..
Ottawa Region Metis Council	<ul style="list-style-type: none"> • Northland and Hatch travelled to Ottawa for a meeting with the Ottawa Region Metis Council on June 4, 2011. Northland presented all projects in the Ottawa Region to the Council. The following items were discussed: <ul style="list-style-type: none"> ◆ Greater consideration be given to Metis heritage in Stage 1 and Stage 2 Archaeological Surveys. ◆ That Northland Power conduct genealogical searches/studies where relevant find spots pose potential for Metis heritage. • Northland and the Metis, with the assistance of James Wagar, will continue to define how to enact this request and to commission the work if it is still in the interest of the Metis. • Consultation is ongoing.
Northumberland Métis Council	<ul style="list-style-type: none"> • Hatch emailed James Wagar on April 15, 2011 regarding the Belleville North and South Projects located in Prince Edward County, and inquire about the inactive Northumberland Métis Council. • James Wagar responded on April 26, 2011 confirming the Northumberland Metis Council to be inactive, and that any comments received from individual Métis citizens in the area should be brought to the attention of the community leaders. • None of the comments to date have been identified as coming from a member of the Metis community.

4.4 Aboriginal Comments and Concerns

Northland Power supports the use of traditional Aboriginal knowledge and through this consultation process aims to provide a method to incorporate this knowledge and to address any comments or concerns about the Project from the Aboriginal perspective. Comments and concerns are contained below for each community or organization, along with any responses that were required to effectively address the concern and/or incorporate this knowledge into the Project design.

The comments and concerns received, along with the responses, are provided in Table 4.2.

Table 4.2 Comments/Concerns from Aboriginal Communities and Responses

Aboriginal Community/Group	Comment/Concern	Response: Mitigation, Resolution and/or Amendment to Project
Alderville First Nation	<p>The Project was deemed as a level 3, having minimal impact to the First Nations rights, requested to be kept apprised of archaeological findings, burial sites and environmental impacts, should any occur. It was requested to be kept aware of any job opportunities as community members had completed "Solar Panel Installation and Maintenance Program."</p> <p>Appendix J contains a copy of the letter.</p>	<p>Comment noted. Correspondence with the First Nation continued as per the Renewable Energy Approvals process. Northland will continue to inform the Aboriginal community of ongoing Project developments.</p>
Hiawatha First Nation	<p>Request to be kept aware of updates, archaeological findings, and/or environmental impacts, should any occur. Noted that the First Nation didn't "see any concerns for Hiawatha as long as all the environmental mitigations are carried out".</p> <p>Appendix J contains a copy of the letter.</p>	<p>Comments noted. Correspondence with the First Nation continued as per the Renewable Energy Approvals process. Northland will continue to inform the Aboriginal community of ongoing Project developments.</p>
Curve Lake First Nation	<p>Strongly recommend that a copy of the proposal be supplied to Karry Sandy-MacKenzie, Williams Treaty First Nation Claims Coordinator.</p> <p>"Although we have not conducted exhaustive research nor have we the resources to do so, Curve Lake First Nation Council is current not aware of any issues that would cause concern with respect to our Traditional, Aboriginal or Treaty rights".</p> <p>Request to be kept aware of any archaeological findings; specifically bones, remains or any other such evidence as suggests a native burial site and any negative environmental impacts.</p>	<p>Hatch left voicemail messages for the Williams Treaty First Nation Claims Coordinator on April 15, 2011 and May 12, 2011. No response to date has been received.</p> <p>Comment noted.</p> <p>Comment noted. Northland will continue to inform the Aboriginal community of ongoing Project developments.</p>

	Appendix J contains a copy of the letter.	
Kawartha Nishnawbe	No comments received to date.	Northland will continue to inform Aboriginal community of ongoing Project developments.
Mohawks of the Bay of Quinte	No comments received to date.	Northland will continue to inform Aboriginal community of ongoing Project developments.
Métis Nation of Ontario	<p>MNO requested that Hatch/Northland provide a quick response to the following broad interests that influence the Métis way of life in the area. These broad general Métis interests include:</p> <ul style="list-style-type: none"> • Water Quality <ul style="list-style-type: none"> - Fish habitats including spawning potential - Drink ability - Impacts downstream - Pollution including cumulative effects - Impacts to Groundwater - Monitoring • Wildlife <ul style="list-style-type: none"> - Flora and fauna populations - Endangered/threatened species - Biodiversity initiatives - Monitoring • Aboriginal Interests <ul style="list-style-type: none"> - Who and how have the aboriginal people in Ontario been consulted - Have any aboriginal sensitive areas been recognized on or around the study area - Has any archaeological artifacts dated between the 17th and 19th been found within the study area • The Study Area <ul style="list-style-type: none"> - Does any crown land exist within the study area - What types of land exists within the study area (ie. Wooded lots, agriculture) • Air Quality <ul style="list-style-type: none"> - Pollution during construction, operation, decommissioning and abandonment 	Hatch prepared a Memo Regarding Métis Interests, February 2, 2011 which addressed the MNO's documented concerns. Please see Appendix J.

<p>Ottawa Region Metis Council</p>	<ul style="list-style-type: none"> • Greater consideration be given to Metis heritage in Stage 1 and Stage 2 Archaeological Surveys. • That Northland Power conduct genealogical searches/studies where relevant find spots pose potential for Metis heritage. 	<p>Northland and the Metis, with the assistance of James Wagar, will continue to define how to enact this request and to commission the work if it is still in the interest of the Metis.</p>
<p>Northumberland Métis Council</p>	<p>No comments received to date.</p>	<p>Northland will continue to inform Aboriginal community of ongoing Project developments.</p>

5. Conclusions

Since April 2010, the consultation program for the Belleville North Solar Project has been active. There has been open dialogue with the public, agencies, Aboriginal groups and the local municipalities regarding the Project. In addition to communications via email, letters, meetings and phone calls, there was an initial first Public Meeting followed by the final Public Meeting. The purpose of this Consultation Report is to ensure a transparent and meaningful consultation process for all participants with an interest in the Project, where all comments and questions received are documented, reviewed and addressed.

As a result of these opportunities for comment, several issues were raised that have been considered as part of the Project assessment, and provided additional guidance toward the scope of the studies. These issues were considered and incorporated into the REA application documents and the Project design, as appropriate.

Blank back

6. References

Ministry of the Environment (MOE). 2010. Technical Bulletin Five – Guidance for Preparing the Consultation Report. March 1, 2010.

Appendix A

Public Stakeholder List

William E and Elizabeth A Day
468 Burr Rd., RR2
Ameliasburg, ON K0K 1A0

Wayne Charles McFaul
397 Burr Rd., RR2
Ameliasburg, ON K0K 1A0

Brian Douglas and Rebecca Susan McFaul
428 Burr Rd., RR2
Ameliasburg, ON K0K 1A0

William David and Sharon Marlene Hopkins
386 Burr Rd., RR2
Ameliasburg, ON K0K 1A0

John Gary and Marilyn Lynn Fox
RR1
Bloomfield, ON K0K 1G0

Robert John Sanderson
352 Burr Rd., RR2
Ameliasburg, ON K0K 1A0

National Defence Canada, c/o Municipal Grants
4900 Yonge St., Suite 1200
North York, ON M2N 6A4

Mark Harold and Karen Marie Paddison
284 Burr Rd., RR2
Ameliasburg, ON K0K 1A0

Prince Edward Corporation, Drawer 1550
332 Main St.
Picton, ON K0K 2T0

Jo-Anne Egan, Planning Manager Planning Services
Department
332 Main Street
Picton, ON K0K 2T0

Clerk's Office
332 Main Street
Picton, ON K0K 2T0

Doris Dumais, Director, Environmental Assessment and
Approvals Branch, Ministry of the Environment
2 St. Clair Ave., W, 12A Floor
Toronto, ON M4V 1L5

Trevor Daglils, District Manager, Kingston District Office Or
to Whom it May Concern
Box 22032, 1259 Gardiners Road
Kingston, ON K7M 8S5

William E and Elizabeth A Day
468 Burr Rd., RR2
Ameliasburg, ON K0K 1A0

Wayne and Wendy McFaul
397 Burr Rd., RR2
Ameliasburg, ON K0K 1A0

Brian Douglas and Rebecca Susan McFaul
428 Burr Rd., RR2
Ameliasburg, ON K0K 1A0

William David and Sharon Marlene Hopkins
386 Burr Rd., RR2
Ameliasburg, ON K0K 1A0

John Gary and Marilyn Lynn Fox
RR1
Bloomfield, ON K0K 1G0

Robert John Sanderson
352 Burr Rd., RR2
Ameliasburg, ON K0K 1A0

National Defence Canada, c/o Municipal Grants
4900 Yonge St., Suite 1200
North York, ON M2N 6A4

National Defence Canada, c/o Municipal Grants
4900 Yonge St., Suite 1200
North York, ON M2N 6A4

National Defence Canada, c/o Municipal Grants
4900 Yonge St., Suite 1200
North York, ON M2N 6A4

Mark Harold and Karen Marie Paddison
284 Burr Rd., RR2
Ameliasburg, ON K0K 1A0

Prince Edward Corporation, Drawer 1550
332 Main St.
Picton, ON K0K 2T0

Jo-Anne Egan, Planning Manager Planning Services
Department
332 Main Street
Picton, ON K0K 2T0

Clerk's Office
332 Main Street
Picton, ON K0K 2T0

Doris Dumais, Director, Environmental Assessment
and Approvals Branch, Ministry of the Environment
2 St. Clair Ave., W, 12A Floor
Toronto, ON M4V 1L5

Trevor Daglils, District Manager, Kingston District
Office Or to Whom it May Concern
Box 22032, 1259 Gardiners Road
Kingston, ON K7M 8S5

Bruce Brown
431 Burr Road
Ameliasburg, ON K0K 1A0

Sheila Earl
22 Crofton Road, RR 2
Ameliasburg, ON K0K 1A0

Clarence and Gaylii Stevenson
1766 Rednersville Road, RR 1
Carrying Place, ON K0K 1L0

Gordon Laurin
RR 1
Cherry Valley, ON K0K 1P0

Randy Vincent
267 Burr Road
Ameliasburg, ON K0K 1A0

Nancy Stafford
40 Burr Road
Ameliasburg, ON K0K 1A0

Kevin Wager
28 Burr Road
Ameliasburg, ON K0K 1A0

Mary Sweet and Cam Fraser
164 Burr Road
Ameliasburg, ON K0K 1A0

Carole and Wayne Vincent
492 Burr Road, RR 2
Ameliasburg, ON K0K 1A0

Gordon and Joan Laurie
10 Cowan Road, RR 1
Cherry Valley, ON K0K 1P0

Erin McFaul
39 Burr Road
Ameliasburg, ON K0K 1A0

Bob Denard
58 Bishop Lane
Ameliasburg, ON K0K 1A0

Angela and Byan Gilbert
412 Burr Road
Ameliasburg, ON K0K 1A0

Larry Morgan
130 Burr Road
Ameliasburg, ON K0K 1A0

M Hough and Ronald D Hough
748 Burr Road, RR 2
Ameliasburg, ON K0K 1A0

John Thompson
1838 Cty Rd 5, RR 2
Picton, ON K0K 2T0

Fred Alyea and Joe Valleau
257 Burr Road RR 2
Ameliasburg, ON K0K 1A0

Heather and David Hedley
171 Burr Road
Ameliasburg, ON K0K 1A0

Roger and Sharon Elliot
RR 1
Bloomfield, ON K0K 1G0

Appendix B

Notices and Letters

H334844

July 15, 2010

«Property_Owner_Name_»
«Address_Including_PO_Box»
«City_», «Province_» «Postal_Code_»

Dear «Property_Owner_Name_»:

**Subject: Notice of a Proposal and Notice of Public Meeting
Northland Power - Belleville North Solar Project**

Northland Power is proposing to construct a solar project in Prince Edward County, just west of the community of Crofton. The proposed project is named the Belleville North Solar Project (the "Project") and will have an installed nominal capacity of 10 MW. This Project requires a Renewable Energy Approval (REA) issued in accordance with the provisions of the Ontario *Environmental Protection Act* Part V.0.1 and Ontario Regulation 359/09. Northland Power has retained Hatch to assist in fulfilling the requirements of the REA process.

Northland Power is undertaking a public consultation program in support of the Project and we would like to invite you to the upcoming Public Consultation Meeting. Please find attached a "Notice of a Proposal to Engage in a Renewable Energy Project and Notice of Public Meeting", which details the time and date of the planned meeting. This joint Notice will also be published in the *County Weekly* on July 22, 2010 and July 29, 2010. The Public Consultation Meeting will provide the public with an opportunity to learn more about our Project proposal and about Northland Power.

In accordance with Section 16 (3) of Ontario Reg. 359/09, a draft "Project Description Report" and associated information pertaining to this Project and about Northland Power can be found online at: www.northlandpower.ca/bellevillenorth. We would appreciate any comments, queries or information you may have that are relevant to the proposed Project.

Please direct any correspondence(s) to:

Sean Male, M.Sc., REA Coordinator
Hatch Ltd.
4342 Queen St., Suite 500
Niagara Falls, ON, L2E 7J7
Phone: 905-374-0701, Ext 5280
Fax: 905-374-1157
Email: smale@hatch.ca

Yours truly,



Sean Male, M.Sc.
REA Coordinator

SM:srg

Attachment: Notice of a Proposal/Notice of Public Meeting: Belleville North

cc: Mike Lord, Northland Power
Tom Hockin, Northland Power

H334680-0000-07-218-0036

NOTICE OF A PROPOSAL

By Northland Power to Engage in Two Renewable Energy Projects

AND NOTICE OF PUBLIC MEETING

Project Name: Belleville North Solar Project

Project Applicant: Northland Power Solar Belleville North L.P.

Project Location: The Project is located on Burr Road, west of the Hamlet of Crofton.

Dated at the Corporation of the County of Prince Edward this the 22nd of July, 2010

Project Name: Belleville South Solar Project

Project Applicant: Northland Power Solar Belleville South L.P.

Project Location: The Project is located on Highway 62, southwest of the Hamlet of Crofton.

Dated at the Corporation of the County of Prince Edward this the 22nd of July, 2010

Northland Power is planning to engage in two renewable energy Projects in respect of which the issuance of a renewable energy approval is required. The proposal to engage in these Projects and the Projects themselves are subject to the provisions of the Environmental Protection Act (Act) Part V.0.1 and Ontario Regulation 359/09 (Regulation). This notice must be distributed in accordance with section 15 of the Regulation prior to applications being submitted and assessed for completeness by the Ministry of Environment.

This Public Meeting is being held to provide information on the proposed Projects.

Meeting Location:

Date: Wednesday, August 25, 2010

Time: 6:00 pm to 9:00 pm

Place: Allisonville Townhall, 11 Dutch Road, (off County Road 2), Prince Edward County, ON

Project Description:

Pursuant to the Act and Regulation, the facilities, in respect of which these Projects are to be engaged in, are Class 3 Solar Facilities. If approved, these facilities would each have a total maximum name plate capacity of 10 MW. The Project locations are shown in the map below.

The Draft Project Description Reports, titled *Project Description Report Northland Power Solar Belleville North* and *Project Description Report Northland Power Solar Belleville South*, describe the Projects as solar electric generating facilities that will utilize photovoltaic (PV) panels installed on fixed racking structures. DC electricity generated from the PV panels is converted to AC electricity by an inverter. The voltage level of the AC electricity produced by the inverter is stepped-up to distribution level voltages by a series of transformers. Written copies of the Draft Project Description Reports are available for public inspection at www.northlandpower.ca/bellevillenorth and at www.northlandpower.ca/bellevillesouth.

Project Contact and Information:

To learn more about the project proposals, public meetings or to communicate concerns, please contact:

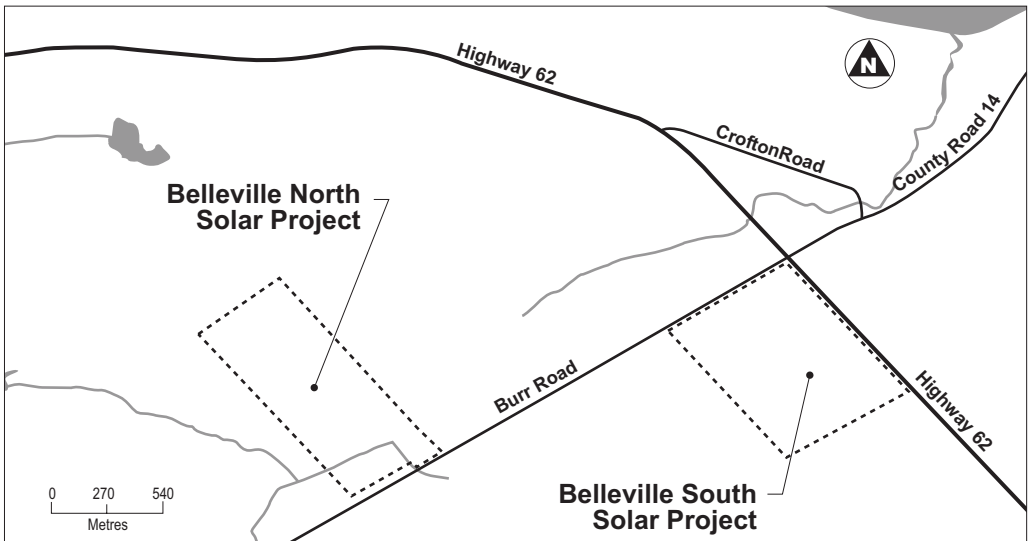
Sean Male, MSc, Environmental Coordinator

Hatch Ltd.

4342 Queen Street, Suite 500, Niagara Falls, ON, L2E 7J7

Tel: 905-374-0701 ext. 5280 Fax: 905-374-1157

Email: smale@hatch.ca



A940

STERN
TARIO
STO
OW

3, 2010
COMPANY
STREET
DAILY

A940

ELS
nutritious noon-time
a volunteer to help
own home. Prince
both hot and frozen
physical disability,
an illness, and
rd or the Alzheimer
only. To apply for
far someone, call
93. Staff can make
and other services.

A940

VICS
your nails, have
rns, this service is
unity Care holds
specially trained,
take their time with
needs. The cost is
Care for Seniors at
a service in either
region

CALL NOW

ATTENTION
SMOKERS!
Quit Instantly!
virtually No Withdraw-
als
20 flat rate - one
Laser treatment
Belleville Ramada Inn
Sat, July 31st
call Laser Health
613-542-9813

-6757

NOTICE OF A PROPOSAL By Northland Power to Engage in Two Renewable Energy Projects AND NOTICE OF PUBLIC MEETING

Project Name: Belleville North Solar Project **Project Applicant:** Northland Power Solar Belleville North L.P.
Project Location: The Project is located on Burr Road, west of the Hamlet of Crofton.
Dated at the Corporation of the County of Prince Edward this the 22nd of July, 2010

Project Name: Belleville South Solar Project **Project Applicant:** Northland Power Solar Belleville South L.P.
Project Location: The Project is located on Highway 62, southwest of the Hamlet of Crofton.
Dated at the Corporation of the County of Prince Edward this the 22nd of July, 2010

Northland Power is planning to engage in two renewable energy Projects in respect of which the issuance of a renewable energy approval is required. The proposal to engage in these Projects and the Projects themselves are subject to the provisions of the Environmental Protection Act (Act) Part V.0.1 and Ontario Regulation 359/09 (Regulation). This notice must be distributed in accordance with section 15 of the Regulation prior to applications being submitted and assessed for completeness by the Ministry of Environment.

This Public Meeting is being held to provide information on the proposed Projects.

Meeting Location:

Date: Wednesday, August 25, 2010

Time: 6:00 pm to 9:00 pm

Place: Allisonville Townhall, 11 Dutch Road, (off County Road 2), Prince Edward County, ON

Project Description:

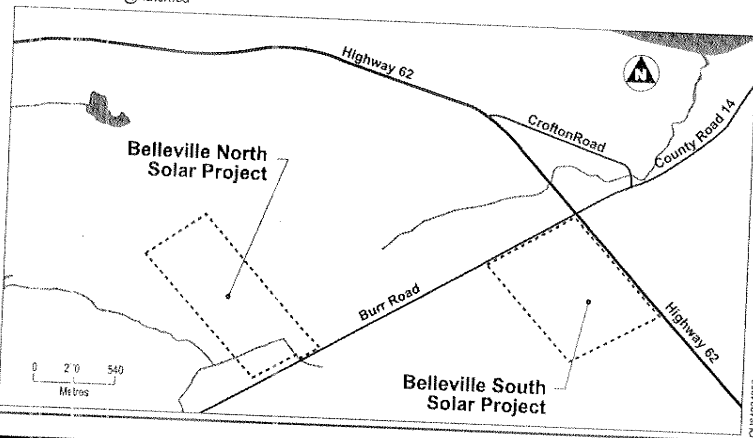
Pursuant to the Act and Regulation, the facilities, in respect of which these Projects are to be engaged in, are Class 3 Solar Facilities. If approved, these facilities would each have a total maximum name plate capacity of 10 MW. The Project locations are shown in the map below.

The Draft Project Description Reports, titled *Project Description Report Northland Power Solar Belleville North* and *Project Description Report Northland Power Solar Belleville South*, describe the Projects as solar electric generating facilities that will utilize photovoltaic (PV) panels installed on fixed racking structures. DC electricity generated from the PV panels is converted to AC electricity by an inverter. The voltage level of the AC electricity produced by the inverter is stepped-up to distribution level voltages by a series of transformers. Written copies of the Draft Project Description Reports are available for public inspection at www.northlandpower.ca/bellevillenorth and at www.northlandpower.ca/bellevillesouth.

Project Contact and Information:

To learn more about the project proposals, public meetings or to communicate concerns, please contact:

Sean Male, MSc, Environmental Coordinator
Hatch Ltd.
4347 Queen Street, Suite 500, Niagara Falls, ON, L2E 7J7
Tel: 905-374-0701 ext. 5280 Fax: 905-374-1157
Email: smale@hatch.ca



Thursday, July 22, 2010 • County Wee

Pork & Corn Roast

St. Philip's Anglican Church
Milford

BBQ Pork, Fresh Corn, Salads & Desserts

Wednesday, August 4th

5:30 - 7:00 p.m.

(Rain or Shine)

Adults \$14, Children under 12 \$5

All Welcome

RENOVATORS IS CLOSING

Yard Sale

WEEK

ALL INSTOCK

LIGHTING
DOORS & WINDOWS

CARPET

LAMINATE

TILE

AREA RUGS

MUCH MORE

We are winding down!

Great Clear Out Prices!

Renovators
Call in love with your home...

Home Improvement Co
141 Main St.,
Picton 613-476-795
www.myrenovators.ca

CLASSIFIED

1-866-541-6757

Notices

A910 Coming Events

A940

NOTICE OF A PROPOSAL
By Northland Power to Engage in Two Renewable Energy Projects
AND NOTICE OF PUBLIC MEETING

Project Name: Belleville North Solar Project **Project Applicant:** Northland Power Solar Belleville North L.P.
Project Location: The Project is located on Burr Road, west of the Hamlet of Crofton.
Dated at the Corporation of the County of Prince Edward this the 22nd of July, 2010

Project Name: Belleville South Solar Project **Project Applicant:** Northland Power Solar Belleville South L.P.
Project Location: The Project is located on Highway 62, southwest of the Hamlet of Crofton.
Dated at the Corporation of the County of Prince Edward this the 22nd of July, 2010

Northland Power is planning to engage in two renewable energy Projects in respect of which the issuance of a renewable energy approval is required. The proposal to engage in these Projects and the Projects themselves are subject to the provisions of the Environmental Protection Act (Act) Part V.0.1 and Ontario Regulation 359/09 (Regulation). This notice must be distributed in accordance with section 15 of the Regulation prior to applications being submitted and assessed for completeness by the Ministry of Environment.

This Public Meeting is being held to provide information on the proposed Projects.

Meeting Location:

Date: Wednesday, August 25, 2010

Time: 6:00 pm to 9:00 pm

Place: Allisonville Townhall, 11 Dutch Road, (off County Road 2), Prince Edward County, ON

Project Description:

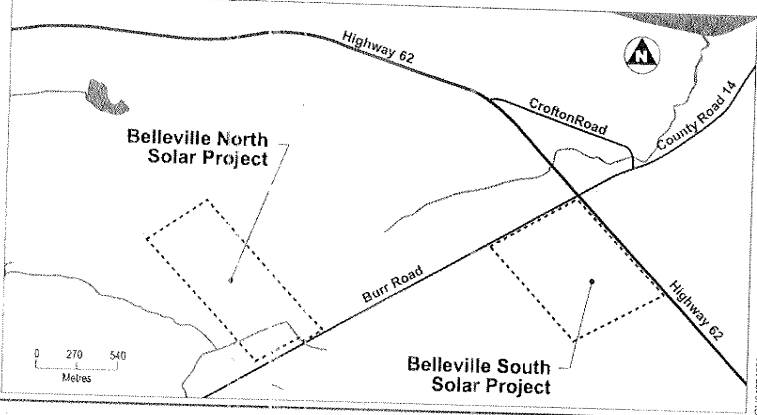
Pursuant to the Act and Regulation, the facilities, in respect of which these Projects are to be engaged in, are Class 3 Solar Facilities. If approved, these facilities would each have a total maximum name plate capacity of 10 MW. The Project locations are shown in the map below.

The Draft Project Description Reports, titled *Project Description Report Northland Power Solar Belleville North* and *Project Description Report Northland Power Solar Belleville South*, describe the Projects as solar electric generating facilities that will utilize photovoltaic (PV) panels installed on fixed racking structures. DC electricity generated from the PV panels is converted to AC electricity by an inverter. The voltage level of the AC electricity produced by the inverter is stepped-up to distribution level voltages by a series of transformers. Written copies of the Draft Project Description Reports are available for public inspection at www.northlandpower.ca/bellevillenorth and at www.northlandpower.ca/bellevillesouth.

Project Contact and Information:

To learn more about the project proposals, public meetings or to communicate concerns, please contact:

Sean Male, MSc, Environmental Coordinator
Hatch Ltd.
4342 Queen Street, Suite 500, Niagara Falls, ON, L2E 7J7
Tel: 905-374-0701 ext. 5280 Fax: 905-374-1157
Email: smale@hatch.ca



Pork & Corn Roast

St. Philip's Anglican Church
Milford

BBQ Pork, Fresh Corn, Salads & Desserts

Wednesday, August 4th

5:30 - 7:00 p.m.

(Rain or Shine)

Adults \$14, Children under 12 \$5

All Welcome



P.E.C.M.H. AUXILIARY

Second Time Around Shop
Summer Sale

1/2 Price

On All Clothing, Hats, Bags
and Shoes

Until August 14, 2010

Coming Events

A94C

MEALS ON WHEELS

Delivery to your door of a hot nutritious noon-time meal means daily contact with a volunteer to help you stay safe and well in your own home. Prince Edward Community Care offers both hot and frozen meals to seniors, adults with a physical disability, those who are recovering from an illness, and clients of Hospice Prince Edward or the Alzheimer Society of Prince Edward County. To apply for Meals on Wheels or to refer someone, call Community Care at 613-476-7493. Staff can make home visits to explain this and other services. www.communitycareforseniors.org

EASTERN ONTARIO PHOTO SHOW

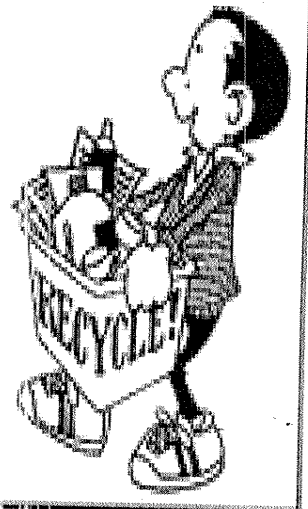
JUL 31 - AUG 8, 2010
UPSTAIRS AT BOOKS AND COMPANY
289 PICTON MAIN STREET
10AM-6PM DAILY

FOOT CARE CLINICS

If you have trouble trimming your nails, have calluses, cracked heels or corns, this service is ideal. Prince Edward Community Care holds weekly foot care clinics with specially trained, friendly registered nurses that take their time with seniors to meet their foot care needs. The cost is \$20 per appt. Call Community Care for Seniors at 613-476-7493 to access this service in either Picton or Wellington.

CLASSIFIED
1-866-541-6757

PLEASE RECYCLE THIS NEWSPAPER



H334844

March 23, 2011

XXX

XXX

Subject: Notice of Public Meeting - Northland Power Solar Belleville North L.P - Belleville North Solar Project

Northland Power Solar Belleville North L.P (hereafter referred to as “Northland”) is proposing to construct a solar project in the County of Prince Edward, just west of the community of Crofton. The proposed Project is named the Belleville North Solar Project (the “Project”) and will have an installed nominal capacity of 10 MW. This Project requires a Renewable Energy Approval (REA) issued in accordance with the provisions of the Ontario *Environmental Protection Act* Part V.0.1 and Ontario Regulation 359/09. Northland has retained Hatch to assist in fulfilling the requirements of the REA process.

As you are aware, Northland has initiated a public consultation program in support of the Project. This letter is inviting you to an upcoming Public Consultation Meeting. Please find attached a “Notice of Public Meeting”, which details the time and date of the planned meeting. This Notice will also be published in the *County Weekly* on Thursday March 24, 2011 and again on Thursday April 29, 2011.

Along with an invitation to a Public Consultation Meeting, this letter is to provide notice that the supporting documents, as per Section 16 (1) of Ontario Regulation 359/09 are available for your review. These documents include the Natural Heritage Reports, Water Body Reports, Construction Plan Report, Design and Operation Report, Decommissioning Plan Report, Noise Assessment Study and Stage 1 and 2 Archaeological Assessment Report. As well, to aid in your review an executive summary is also provided. These reports are available on line at northlandpower.ca/bellevillenorth and at the Ameliasburg Branch, Al Purdy Library at 809 Whitney Road, Ameliasburg, Ontario. Further, the information provided in these reports will be discussed during the Public Consultation Meeting from 6:00pm to 8:00pm on Wednesday May 25, 2011 at the Allisonville Townhall, 11 Dutch Road (off County Road 2), Prince Edward County, Ontario. We would appreciate any comments, queries or information you may have that are relevant to the proposed Project.

Please direct any correspondence(s) to:

Sean Male, M.Sc., REA Coordinator
Hatch Ltd.
4342 Queen St., Suite 500
Niagara Falls, ON, L2E 7J7
Phone: 905-374-0701, Ext 5280
Fax: 905-374-1157
Email: smale@hatch.ca

Yours truly,



Sean Male, M.Sc.
REA Coordinator

SM:mg

Attachment: Notice of Public Meeting: Belleville North Solar Project and Belleville South Solar Project

cc: Mike Lord, Northland Power
Tom Hockin, Northland Power

NOTICE OF FINAL PUBLIC MEETING

to be held by Northland Power Regarding a
Proposal to Engage in Two Renewable Energy Projects

Project Name: Belleville North Solar Project

Project Applicant: Northland Power Solar Belleville North L.P.

Project Location: The Project is located on Burr Road, west of the Community of Crofton.

Dated at the Corporation of the County of Prince Edward this the 24th of March, 2011

Project Name: Belleville South Solar Project

Project Applicant: Northland Power Solar Belleville South L.P.

Project Location: The Project is located on Highway 62, southwest of the Community of Crofton.

Dated at the Corporation of the County of Prince Edward this the 24th of March, 2011

Northland Power is planning to engage in two renewable energy Projects in respect of which the issuance of a renewable energy approval is required. The proposal to engage in the projects and the projects themselves are subject to the provisions of the Environmental Protection Act (Act) Part V.0.1 and Ontario Regulation 359/09 (Regulation). This notice must be distributed in accordance with section 15 of the Regulation prior to an application being submitted and assessed for completeness by the Ministry of Environment.

This Public Meeting is being held to provide information on the proposed Projects. The meeting will be an open house format.

Meeting Location:

Date: Wednesday, May 25, 2011

Time: 6:00 pm to 8:00 pm

Place: Allisonville Townhall, 11 Dutch Road (off County Road 2), Prince Edward County, ON

Project Description:

Pursuant to the Act and Regulation, the facilities, in respect of which these projects are to be engaged in, are Class 3 Solar Facilities. If approved, these facilities would each have a total maximum name plate capacity of 10 MW. The project location is described in the map below.

The Draft Project Description Reports, titled *Project Description Report Northland Power Solar Belleville North* and *Project Description Report Northland Power Solar Belleville South*, describe the Projects as solar electric generating facilities that will utilize photovoltaic (PV) panels installed on fixed racking structures. DC electricity generated from the PV panels is converted to AC electricity by an inverter. The voltage level of the AC electricity produced by the inverter is stepped-up to distribution level voltages by a series of transformers. Written copies of the Draft Project Description Reports were made available for public inspection on July 22, 2010 at www.northlandpower.ca/bellevillenorth and at www.northlandpower.ca/bellevillesouth, and at local municipal offices. Further, the applicant has prepared supporting documents as per Ontario Regulation 359/09.

Written copies of the draft supporting documents will also be made available for the public inspection on March 24, 2011 at www.northlandpower.ca/bellevillenorth and www.northlandpower.ca/bellevillesouth, and at Ameliasburg Branch, Al Purdy Library at 809 Whitney Road, Ameliasburg, Ontario.

Project Contact and Information:

To learn more about the project proposals, public meetings or to communicate concerns, please contact:

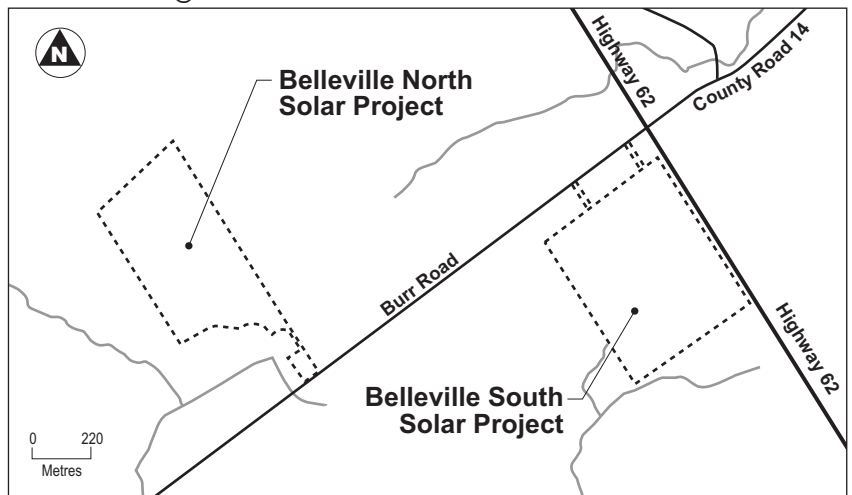
Sean Male, MSc, Environmental Coordinator

Hatch Ltd.

4342 Queen Street, Suite 500, Niagara Falls, ON, L2E 7J7

Tel: 905-374-0701 ext. 5280 Fax: 905-374-1157

Email: smale@hatch.ca



Notices

A910

Notices

A910

Notices

A910

NOTICE OF FINAL PUBLIC MEETING

to be held by Northland Power Regarding a Proposal to Engage in Two Renewable Energy Projects

Project Name: Belleville North Solar Project
Project Applicant: Northland Power Solar Belleville North L.P.
Project Location: The Project is located on Burr Road, west of the Community of Crofton.
Dated at the Corporation of the County of Prince Edward this the 24th of March, 2011

Project Name: Belleville South Solar Project
Project Applicant: Northland Power Solar Belleville South L.P.
Project Location: The Project is located on Highway 62, southwest of the Community of Crofton.
Dated at the Corporation of the County of Prince Edward this the 24th of March, 2011

Northland Power is planning to engage in two renewable energy Projects in respect of which the issuance of a renewable energy approval is required. The proposal to engage in the projects and the projects themselves are subject to the provisions of the Environmental Protection Act (Act) Part V.0.1 and Ontario Regulation 359/09 (Regulation). This notice must be distributed in accordance with section 15 of the Regulation prior to an application being submitted and assessed for completeness by the Ministry of Environment.

This Public Meeting is being held to provide information on the proposed Projects. The meeting will be an open house format.

Meeting Location:

Date: Wednesday, May 25, 2011

Time: 6:00 pm to 8:00 pm

Place: Allisonville Townhall, 11 Dutch Road (off County Road 2), Prince Edward County, ON

Project Description:

Pursuant to the Act and Regulation, the facilities, in respect of which these projects are to be engaged in, are Class 3 Solar Facilities. If approved, these facilities would each have a total maximum name plate capacity of 10 MW. The project location is described in the map below.

The Draft Project Description Reports, titled *Project Description Report Northland Power Solar Belleville North* and *Project Description Report Northland Power Solar Belleville South*, describe the Projects as solar electric generating facilities that will utilize photovoltaic (PV) panels installed on fixed racking structures. DC electricity generated from the PV panels is converted to AC electricity by an inverter. The voltage level of the AC electricity produced by the inverter is stepped-up to distribution level voltages by a series of transformers. Written copies of the Draft Project Description Reports were made available for public inspection on July 22, 2010 at www.northlandpower.ca/bellevillenorth and at www.northlandpower.ca/bellevillesouth, and at local municipal offices. Further, the applicant has prepared supporting documents as per Ontario Regulation 359/09.

Written copies of the draft supporting documents will also be made available for the public inspection on March 24, 2011 at www.northlandpower.ca/bellevillenorth and www.northlandpower.ca/bellevillesouth, and at Ameliasburg Branch, Al Purdy Library at 809 Whitney Road, Ameliasburg, Ontario.

Project Contact and Information:

To learn more about the project proposals, public meetings or to communicate concerns, please contact:

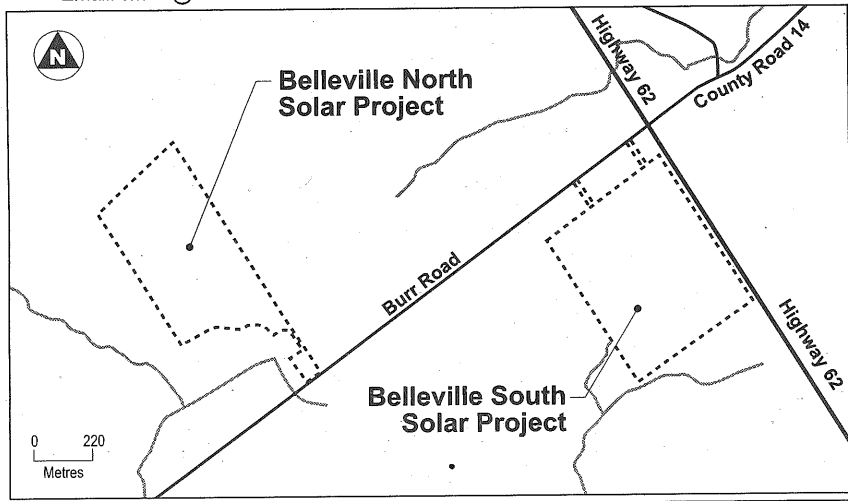
Sean Male, MSc, Environmental Coordinator

Hatch Ltd.

4342 Queen Street, Suite 500, Niagara Falls, ON, L2E 7J7

Tel: 905-374-0701 ext. 5280 Fax: 905-374-1157

Email: smale@hatch.ca



CLASSIFIED

- Meeting The Challenge -



NOTICE OF PUBLIC MEETING

The County of Prince Edward proposes to pass a by-law to close, declare surplus and convey to the abutting property owner the unopened concession road allowance between Concession 3 and 6, Part of Lot 80, Concession 6, Part of Lot 3, Concession 3 and being Part 5 and 6 on Draft Survey Plan by Roger Pickard, Hillier Ward, now in the Municipality of the County of Prince Edward.

At its Committee of the Whole meeting to be held in Shire Hall, 332 Picton Main Street on April 14, 2011 commencing at 1:00 p.m. Committee will hear in person or by his or her counsel, agent or solicitor, any person who wishes to speak to this matter.

The survey may be viewed at the Public Works Department, 280 Picton Main Street, 2nd Floor or by viewing the Committee of the Whole agenda for April 14, 2011 on the County Web site after April 12, 2011.

To obtain additional information or submit written comments, please contact the undersigned.

Victoria Leskie
 County Clerk
 Shire Hall
 332 Main Street
 Picton, ON K0K 2T0
 613-476-2148 ext 226
vleskie@pecounty.on.ca

Robert McAuley, P.Eng
 Commissioner
 Public Works
 280 Main Street
 Picton, ON K0K 2T0
 613-476-2148 ext 323
rmcauley@pecounty.on.ca

EXTRA... 1-866-541-6757
EXTRA... CLASSIFIED VALUE

Coming Events

A940

Coming Events

A940

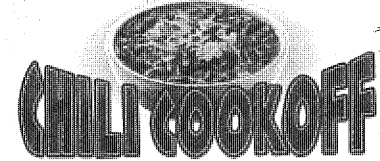


NEW CRAFT & FLEA MARKET
 OPENING JUNE 2011

This 12,000 sq. ft. facility is located in "The County" on the well traveled County Road #49 just 7 km from the Skyway Bridge.

Indoor and outdoor spaces are available for vendors searching for a new retail outlet. It'll be fun and it's new and we're waiting for you.

Please call, text or e-mail us today to book for the upcoming summer season.
 Contact Peggy at: wpholdings@kos.net
 613-453-9354 (cell), 613-377-1901



Professional or Amateur.

Bring your favourite chili recipe in a crock-pot to the

Cherry Valley Lion's Club Chili Cook-Off,

Saturday April 9th, 11am-2pm,

Cherry Valley Church Hall.

Prize awarded for Favourite!

To enter, please call

613-476-8375 or 613-962-6765
 or email: cherryvalleylionsclub@xplornet.com

NOTICE TO CREDITORS AND OTHERS IN THE ESTATE OF FRANK H. GREELEY, DECEASED

All persons, especially Marilyn Greeley, wife of the late John Greeley, having claims against the Estate of Frank H. Greeley, late of the County of Prince Edward, who died on or about the 1st day of October 2010, are hereby notified to send particulars of same to the undersigned on or before April 30th, 2011, after which date the estate will be distributed by the undersigned having regard only to claims then filed.

Dated March 14th, 2011

Robert M Houlding
Executor

16169 Loyalist Parkway
Bloomfield, ON
K0K 1G0



Adult Personals A974

Adult Entertainment A970



SUNNY HEALTH SPA
 Oriental Massage and Relaxing Shiatsu Massage, 54A Market Square, Downtown Trenton, (beside Royal Bank, back door) (613)392-1112, Open 9am-9pm. 12227996

MaXXX'm ESCORTS (Previously Elegant Escorts) Local, friendly, discrete. (613) 391-9808 Always Hiring 12221737



Garage Sales G100

HOUSEHOLD CONTENTS SALE

25 Harvey Street, Picton

Sat., March 26 10:00 - 2:00

Items for sale include:
 Couches, Love seats, Chairs, Oak Table with 6 chairs, 1 King Bed, 2 Double Beds, Dressers, Upright commercial grade freezer (24 cu ft), Lesage Apartment size piano, Gibbard nesting tables, Blue mountain Pottery. All items in excellent condition 12237621

NOTICE OF FINAL PUBLIC MEETING

to be held by Northland Power Regarding a Proposal to Engage in Two Renewable Energy Projects

Project Name: Belleville North Solar Project

Project Applicant: Northland Power Solar Belleville North L.P.

Project Location: The Project is located on Burr Road, west of the Community of Crofton.

Dated at the Corporation of the County of Prince Edward this the 24th of March, 2011

Project Name: Belleville South Solar Project

Project Applicant: Northland Power Solar Belleville South L.P.

Project Location: The Project is located on Highway 62, southwest of the Community of Crofton.

Dated at the Corporation of the County of Prince Edward this the 24th of March, 2011

Northland Power is planning to engage in two renewable energy Projects in respect of which the issuance of a renewable energy approval is required. The proposal to engage in the projects and the projects themselves are subject to the provisions of the Environmental Protection Act (Act) Part V.0.1 and Ontario Regulation 359/09 (Regulation). This notice must be distributed in accordance with section 15 of the Regulation prior to an application being submitted and assessed for completeness by the Ministry of Environment.

This Public Meeting is being held to provide information on the proposed Projects. The meeting will be an open house format.

Meeting Location:

Date: Wednesday, May 25, 2011

Time: 6:00 pm to 8:00 pm

Place: Wellington Elks Hall - Allisonville, 11 Dutch Road (off County Road 2)
Prince Edward County, ON

Project Description:

Pursuant to the Act and Regulation, the facilities, in respect of which these projects are to be engaged in, are Class 3 Solar Facilities. If approved, these facilities would each have a total maximum name plate capacity of 10 MW. The project location is described in the map below.

The Draft Project Description Reports, titled *Project Description Report Northland Power Solar Belleville North* and *Project Description Report Northland Power Solar Belleville South*, describe the Projects as solar electric generating facilities that will utilize photovoltaic (PV) panels installed on fixed racking structures. DC electricity generated from the PV panels is converted to AC electricity by an inverter. The voltage level of the AC electricity produced by the inverter is stepped-up to distribution level voltages by a series of transformers. Written copies of the Draft Project Description Reports were made available for public inspection on July 22, 2010 at www.northlandpower.ca/bellevillenorth and at www.northlandpower.ca/bellevillesouth, and at local municipal offices. Further, the applicant has prepared supporting documents as per Ontario Regulation 359/09.

Written copies of the draft supporting documents will also be made available for the public inspection on March 24, 2011 at www.northlandpower.ca/bellevillenorth and www.northlandpower.ca/bellevillesouth, and at Ameliasburg Branch, Al Purdy Library at 809 Whitney Road, Ameliasburg, Ontario.

Project Contact and Information:

To learn more about the project proposals, public meetings or to communicate concerns, please contact:

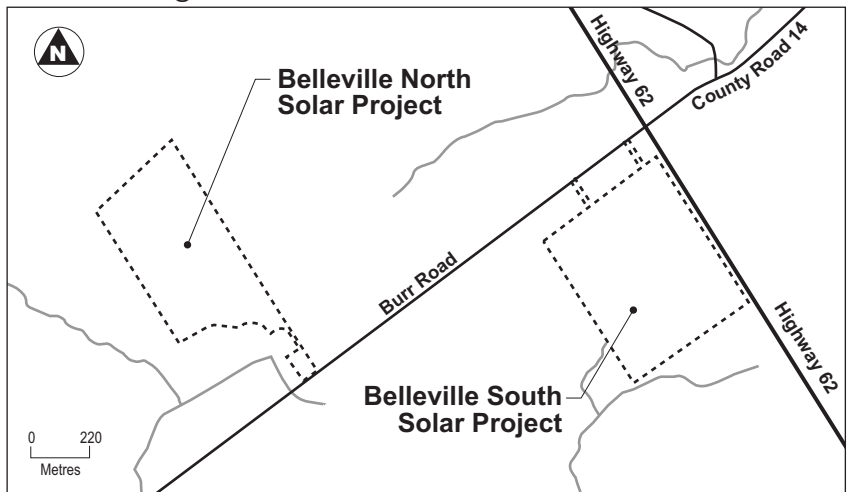
Sean Male, MSc, Environmental Coordinator

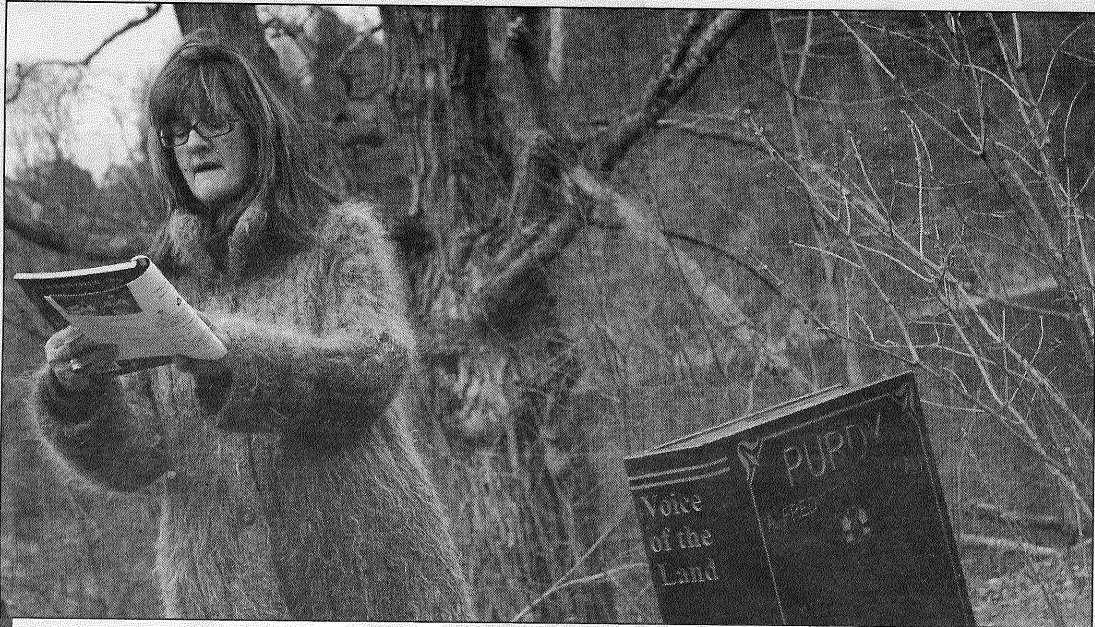
Hatch Ltd.

4342 Queen Street, Suite 500, Niagara Falls, ON, L2E 7J7

Tel: 905-374-0701 ext. 5280 Fax: 905-374-1157

Email: smale@hatch.ca





Emily Mountney QMI Agency

Michelle Lintern-Mole, Centennial Secondary School teacher and local co-ordinator of the Al Purdy A-frame Trust, reads from some of Purdy's works in the A-frame Anthology, at Purdy's Ameliasburgh grave.

Poet Al Purdy's A-frame cottage restoration

A very literary loo

Emily Mountney
QMI Agency

AMELIASBURGH — The "most famous outhouse in Canada" has been returned to its home.

On the anniversary of his death, Trenton High School students, teachers and Ameliasburgh residents gathered to remember the life of Al Purdy.

Like every April 21 since the death of the author in 2000, friends and fans have gathered at the Purdy A-frame house near Roblin Lake in Ameliasburgh.

This year, however, the group had more to celebrate.

Last October, two Trenton High School teachers visited the house, and left with one of the house's key buildings — the outhouse.

They returned the outhouse earlier this week to its original spot, but in much better condition.

"We've had it in the shop class at the school," said Jay Nowak, a teacher at the school. "It was crooked and rotten. We took it apart and put it back together again.

Nowak, along with fellow teacher Ron Furlan, refurbished what they could of the outhouse, using much of the original material as possible.

"It really brings back a lot of memories," said Eurith Purdy, Al's wife, who still stays at the house occasionally. "The students did a marvelous job on it. It's more solid now than it ever was."

Purdy said her husband was "very fond" of the outhouse. "It was a thinking place, a hide-away."

According to Eric Lorenzen, another Trenton High teacher, legend has it that that many of Purdy's famous friends including Margaret Lawrence and Margaret Atwood, signed their names on the inside of the outhouse.

Unfortunately, the outhouse had been painted several years ago, covering up all the famous signatures.

"We tried to lift the paint off to see what was under there, but it was crumbling so badly that we just had to leave it," said Lorenzen.

Last year, Lorenzen was contacted by Michelle Lintern-Mole, a teacher at Centennial Secondary School in Belleville, and also the local co-ordinator of the Al Purdy A-frame Trust.

She asked if there was anything the school could do to help restore the house.

"The outhouse was on the verge of collapsing, it was the most urgent project," said Lorenzen.

The outhouse was the first structure Purdy built on the land. He continued to use the out-

house long after the house was updated with indoor plumbing, his wife Eurith said.

"It is absolutely phenomenal, a piece of history has been restored," said Lintern-Mole. "I hope it's the beginning of more projects, it's very inspiring."

After visiting the house, the group went to the Ameliasburgh Library, where a collection of Purdy's works are on display, as well as the key to the City of Trenton which he received during the 1990s for his novel *Splinter in the Heart*, a story about growing up in Trenton in 1918.

His collection of medals including the Governor Generals award which he won in 1965 and 1986, the Order of Canada and the Peoples' Poet award, are also housed at the library.

The students then took part in a ceremony at Purdy's grave site, where Lintern-Mole read a short poem, *In Search of Owen Roblin*, which Purdy wrote about his own house.

Student Meghan Beatty also read Purdy's poem *Wilderness Gothic*.

Trenton High School, where Purdy was a former student, also renamed its library the Al Purdy Library.

Lintern-Mole said that "through the eyes, ears and hearts of students, Al will always be a mentor."

2007 JEEP WRANGLER UNLIMITED X SUV

4 door SUV, automatic, 3.8L V6, removable roof, keyless entry, air, CD, and so much more. Dark Green with grey interior.



\$19,490

Stk# TB004

BAZ All vehicles can be viewed at www.bazauto.com

AUTO 4184 Old Hwy. #2, 1.5km East of Belleville 613-966-4500

NOTICE OF FINAL PUBLIC MEETING to be held by Northland Power Regarding a Proposal to Engage in Two Renewable Energy Projects

Project Name: Belleville North Solar Project

Project Applicant: Northland Power Solar Belleville North L.P.

Project Location: The Project is located on Burr Road, west of the Community of Crofton. Dated at the Corporation of the County of Prince Edward this the 24th of March, 2011

Project Name: Belleville South Solar Project

Project Applicant: Northland Power Solar Belleville South L.P.

Project Location: The Project is located on Highway 62, southwest of the Community of Crofton. Dated at the Corporation of the County of Prince Edward this the 24th of March, 2011

Northland Power is planning to engage in two renewable energy Projects in respect of which the issuance of a renewable energy approval is required. The proposal to engage in the projects and the projects themselves are subject to the provisions of the Environmental Protection Act (Act) Part V.0.1 and Ontario Regulation 359/09 (Regulation). This notice must be distributed in accordance with section 15 of the Regulation prior to an application being submitted and assessed for completeness by the Ministry of Environment.

This Public Meeting is being held to provide information on the proposed Projects. The meeting will be an open house format.

Meeting Location:

Date: Wednesday, May 25, 2011

Time: 6:00 pm to 8:00 pm

Place: Wellington Elks Hall - Allisonville, 11 Dutch Road (off County Road 2) Prince Edward County, ON

Project Description:

Pursuant to the Act and Regulation, the facilities, in respect of which these projects are to be engaged in, are Class 3 Solar Facilities. If approved, these facilities would each have a total maximum name plate capacity of 10 MW. The project location is described in the map below.

The Draft Project Description Reports, titled *Project Description Report Northland Power Solar Belleville North* and *Project Description Report Northland Power Solar Belleville South*, describe the Projects as solar electric generating facilities that will utilize photovoltaic (PV) panels installed on fixed racking structures. DC electricity generated from the PV panels is converted to AC electricity by an inverter. The voltage level of the AC electricity produced by the inverter is stepped-up to distribution level voltages by a series of transformers. Written copies of the Draft Project Description Reports were made available for public inspection on July 22, 2010 at www.northlandpower.ca/bellevillenorth and at www.northlandpower.ca/bellevillesouth, and at local municipal offices. Further, the applicant has prepared supporting documents as per Ontario Regulation 359/09.

Written copies of the draft supporting documents will also be made available for the public inspection on March 24, 2011 at www.northlandpower.ca/bellevillenorth and www.northlandpower.ca/bellevillesouth, and at Ameliasburg Branch, Al Purdy Library at 809 Whitney Road, Ameliasburg, Ontario.

Project Contact and Information:

To learn more about the project proposals, public meetings or to communicate concerns, please contact:

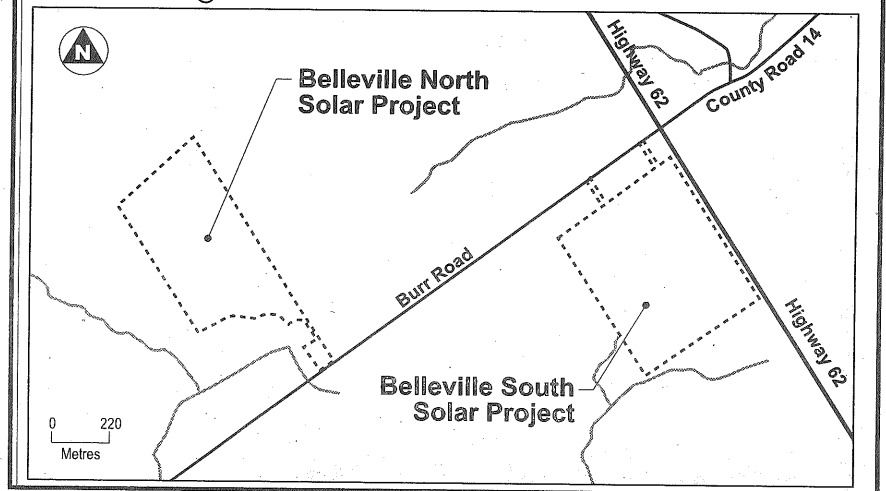
Sean Male, MSc, Environmental Coordinator

Hatch Ltd.

4342 Queen Street, Suite 500, Niagara Falls, ON, L2E 7J7

Tel: 905-374-0701 ext. 5280 Fax: 905-374-1157

Email: smale@hatch.ca



Appendix C
Display Boards, Sign-in Sheet
and Comment Sheets
from First Public Meeting

Please Sign In

Northland Power – First Public Meeting

Projects: Belleville North and Belleville South Solar Projects

Date: Wednesday August 25, 2010

Name	Complete Mailing Address (Name, Street, City, Postal Code)	Phone
BRIAN D. McFAUL	428 Burr Rd Ameliasburg ^{KOK} VA	613 968 9530
Bruce BROWN	431 Burr Rd - U	
Sheila EARL	22 Crofton RDRR2 Ameliasburg	613-969-8017
CLARENCE STEVENSON	176 Redner, Viki Rd, Rd #1 ^{CARRYING} PLACE	613-962-6246
GORDON LAURIE	10 Cowan Rd, Cherry Valley	(613) 476-5310
Mark Paddison	284 Burr Rd Ameliasburg	613-961-1202
Randy Vint JT	267 Burr Rd Ameliasburg	613-969-0746
Nancy Stafford	40 Burr Rd Ameliasburg	613-967-6578
KEVIN WAGER	28 BURR RD AMELIASBURG VA	613-962-1070
Mary Sweet & Con Frasa	164 BURR RD Ameliasburg	613 967-9879
Coade Vincent	492 Burr 2 Rd ^{RR#2} Ameliasburg	613 399-5265
Wesley Vincent	492 Burr ^{RR2} Ameliasburg	613 399 5265
Gordon & Joan Laurie	10 Cowan Rd, RRI, Cherry Valley ^{KOK 1PO}	613-476-5310
Erin McFaul	392 Burr Rd Ameliasburg	613-967-1928
BOB DENARD	58 BISHOP LN "	613 962 4413
Angela Gilbert	412 Burr 1 Rd	613 771-1510
Brian Gilbert	" " "	" " "
Larry Moran	130 Burr Rd	613 962-7071
MP Day	748 " "	613-399-5492
John Thompson	1838 City Rd 5, RR2, Picton	613-476-5470
Wendy McFaul	397 Burr Rd. RR2 Ameliasburg ^{KOK 1PO}	613-967-1928
Fred Alyea	257 Burr Rd. RR2 Ameliasburg	613-962-3234

Comment Sheet

Northland Power
Belleville North and Belleville South Solar Projects

First Public Meeting: Wednesday August 25, 2010

1. Please indicate whether your interest is pertinent to one or both of the proposed Project(s) by circling one or both of the following:

Belleville North

Belleville South

2. Please describe where you reside in relation to the Project location(s)?

257 Burr Rd. Very Close to both
Proposed Projects

3. Please provide any relevant information related to the Project location(s) which, in your opinion, should be considered in assessing the potential effects of the Project(s)?

- I am concerned about the
- Aesthetics of the proposed project
- Upgrade or effect on the existing power line,
- Construction impact on the residents of Burr Rd.
- What impacts there may be on the OVD Base
- I don't get a good sense that you have addressed Species at Risk at either site.
- I am concerned that Agricultural land is being taken out of Production.

Continued on back



4. Please provide any comments, questions or concerns related to the Project(s).

If you would you like to be included on the Project mailing list, please provide your name and full mailing address below:

Name: Joe Valleau

Mailing Address (including your postal code):
257 Burr Rd. RR 2 Ameliasburg.
Ont. K0K 1A0

WE WELCOME YOUR INPUT. PLEASE COMPLETE AND SUBMIT THIS COMMENT SHEET BEFORE LEAVING - THANK YOU

Alternatively, if you prefer to mail/fax your response, please do so within 30 days to:
Sean Male, Environmental Coordinator
4342 Queen St, Suite 500, Niagara Falls, Ontario, L2E 7J7
Phone: 905-374-5200 Fax: 905-374-1157

Comment Sheet

Northland Power
Belleville North and Belleville South Solar Projects

First Public Meeting: Wednesday August 25, 2010

1. Please indicate whether your interest is pertinent to one or both of the proposed Project(s) by circling one or both of the following:

Belleville North

Belleville South

2. Please describe where you reside in relation to the Project location(s)?

County Rd 14, East of Hwy. 62
on Rowlands Lane

3. Please provide any relevant information related to the Project location(s) which, in your opinion, should be considered in assessing the potential effects of the Project(s)?

Continued on back



4. Please provide any comments, questions or concerns related to the Project(s).

Will this renewable energy project, once in operation, decrease my hydro bill in any way?

If not, why? Will DPG reap all the benefits? Will the PEC taxpayer get a break on their utilities i.e. electricity.
Probably not.

If you would you like to be included on the Project mailing list, please provide your name and full mailing address below:

Name: Wanda Christopher

Mailing Address (including your postal code):

34 Rowlands Lane RR2
Ameliastburg KOK 1A0

WE WELCOME YOUR INPUT. PLEASE COMPLETE AND SUBMIT THIS COMMENT SHEET BEFORE LEAVING - THANK YOU

Alternatively, if you prefer to mail/fax your response, please do so within 30 days to:

Sean Male, Environmental Coordinator
4342 Queen St, Suite 500, Niagara Falls, Ontario, L2E 7J7
Phone: 905-374-5200 Fax: 905-374-1157

Comment Sheet

Northland Power
Belleville North and Belleville South Solar Projects

First Public Meeting: Wednesday August 25, 2010

1. Please indicate whether your interest is pertinent to one or both of the proposed Project(s) by circling one or both of the following:

Belleville North

Belleville South

2. Please describe where you reside in relation to the Project location(s)?

3. Please provide any relevant information related to the Project location(s) which, in your opinion, should be considered in assessing the potential effects of the Project(s)?

Continued on back



4. Please provide any comments, questions or concerns related to the Project(s).

Can you please bring an
accurate visual of what
you think the site will
look like to scale -

If you would you like to be included on the Project mailing list, please provide your name and full mailing address below:

Name: _____

Mailing Address (including your postal code):

WE WELCOME YOUR INPUT. PLEASE COMPLETE AND SUBMIT THIS COMMENT SHEET BEFORE LEAVING - THANK YOU

Alternatively, if you prefer to mail/fax your response, please do so within 30 days to:

Sean Male, Environmental Coordinator
4342 Queen St, Suite 500, Niagara Falls, Ontario, L2E 7J7
Phone: 905-374-5200 Fax: 905-374-1157

Comment Sheet

Northland Power
Belleville North and Belleville South Solar Projects

First Public Meeting: Wednesday August 25, 2010

1. Please indicate whether your interest is pertinent to one or both of the proposed Project(s) by circling one or both of the following:

Belleville North

Belleville South

2. Please describe where you reside in relation to the Project location(s)?

Within Study Area
Own (family) neighbouring property.

3. Please provide any relevant information related to the Project location(s) which, in your opinion, should be considered in assessing the potential effects of the Project(s)?

Visual Impact - of both the panels and the transmission station - will a tree line be planted?

Health ~~is~~
↳ Are there any health concerns for people living in the study area? Electricity Generation - High Voltage? High Frequency?

Property Value? →

Continued on back



4. Please provide any comments, questions or concerns related to the Project(s).

My family is interested in how living beside a field of panels generating and transmitting electricity may have an impact on their health. They are also concerned with how the visual/health/impact may affect future property value.
Also - is this a project that will be expanded?

If you would you like to be included on the Project mailing list, please provide your name and full mailing address below:

Name: Erin McFaul

Mailing Address (including your postal code):

397 Burr Rd Ameliasburgh, ON
K0K 1A0

WE WELCOME YOUR INPUT. PLEASE COMPLETE AND SUBMIT THIS COMMENT SHEET BEFORE LEAVING - THANK YOU

Alternatively, if you prefer to mail/fax your response, please do so within 30 days to:

Sean Male, Environmental Coordinator
4342 Queen St, Suite 500, Niagara Falls, Ontario, L2E 7J7
Phone: 905-374-5200 Fax: 905-374-1157

Comment Sheet

Northland Power
Belleville North and Belleville South Solar Projects

First Public Meeting: Wednesday August 25, 2010

1. Please indicate whether your interest is pertinent to one or both of the proposed Project(s) by circling one or both of the following:

Belleville North

Belleville South

2. Please describe where you reside in relation to the Project location(s)?

MY PARENTS OWN THE PROPERTY
NEXT DOOR TO THE WEST.

3. Please provide any relevant information related to the Project location(s) which, in your opinion, should be considered in assessing the potential effects of the Project(s)?

Continued on back



4. Please provide any comments, questions or concerns related to the Project(s).

WE WOULD LIKE THE PANELS
AS LOW AS POSSIBLE -
THE HIGHER THEY ARE, THE FEWER
YOU WOULD BE ABLE TO INSTALL,
BECAUSE OF THE SHADOWS
CREATED.

If you would you like to be included on the Project mailing list, please provide your name and full mailing address below:

Name: GAYLE STEVENSON

Mailing Address (including your postal code):

1766 REDNERSVILLE RD.
R.R.#1, CARRYING PLACE
ONT. KOKILO.

WE WELCOME YOUR INPUT. PLEASE COMPLETE AND SUBMIT THIS COMMENT SHEET BEFORE LEAVING - THANK YOU

Alternatively, if you prefer to mail/fax your response, please do so within 30 days to:

Sean Male, Environmental Coordinator
4342 Queen St, Suite 500, Niagara Falls, Ontario, L2E 7J7
Phone: 905-374-5200 Fax: 905-374-1157

Comment Sheet

Northland Power
Belleville North and Belleville South Solar Projects

First Public Meeting: Wednesday August 25, 2010

1. Please indicate whether your interest is pertinent to one or both of the proposed Project(s) by circling one or both of the following:

Belleville North

Belleville South

2. Please describe where you reside in relation to the Project location(s)?

next property on South Side of Burr Rd
Belleville North.
267 Burr Rd.

3. Please provide any relevant information related to the Project location(s) which, in your opinion, should be considered in assessing the potential effects of the Project(s)?

- Power Lines to distribute power to Grid
- Noise level of inverters
- Decommissioning if project fails
- Environmental Impact Study been completed
- Surface Water quality to Melville Creek
- Location to Mt. View airport
- Property Value decreases
- Are there any long term health effects?
- Will it be a safe, secure site for children?

Continued on back



4. Please provide any comments, questions or concerns related to the Project(s).

If you would you like to be included on the Project mailing list, please provide your name and full mailing address below:

Name: Randy Vincent

Mailing Address (including your postal code):

267 Burr Rd
RR#2 Ameliasburg Ont. K0K 1A0

WE WELCOME YOUR INPUT. PLEASE COMPLETE AND SUBMIT THIS COMMENT SHEET BEFORE LEAVING - THANK YOU

Alternatively, if you prefer to mail/fax your response, please do so within 30 days to:

Sean Male, Environmental Coordinator
4342 Queen St, Suite 500, Niagara Falls, Ontario, L2E 7J7
Phone: 905-374-5200 Fax: 905-374-1157

Comment Sheet

Northland Power
Belleville North and Belleville South Solar Projects

First Public Meeting: Wednesday August 25, 2010

1. Please indicate whether your interest is pertinent to one or both of the proposed Project(s) by circling one or both of the following:

Belleville North

Belleville South

2. Please describe where you reside in relation to the Project location(s)?

On Burr Rd. West of North Project.
Pass the area two or three from Belleville & Pictou
& Kingsda

3. Please provide any relevant information related to the Project location(s) which, in your opinion, should be considered in assessing the potential effects of the Project(s)?

Uglyness Uglyness of Panels are
you really making that much
power to warrant the upset
to the area?

Continued on back



4. Please provide any comments, questions or concerns related to the Project(s).

The rep. wasn't very informed as to what type of panels + size + height of panels.

Data answer questions that clearly

If you would you like to be included on the Project mailing list, please provide your name and full mailing address below:

Name: M. Hough

Mailing Address (including your postal code):

748 Burn Rd.
RR# 2 Ameliasburg K0K 1A0

WE WELCOME YOUR INPUT. PLEASE COMPLETE AND SUBMIT THIS COMMENT SHEET BEFORE LEAVING - THANK YOU

Alternatively, if you prefer to mail/fax your response, please do so within 30 days to:

Sean Male, Environmental Coordinator
4342 Queen St, Suite 500, Niagara Falls, Ontario, L2E 7J7
Phone: 905-374-5200 Fax: 905-374-1157

Comment Sheet

Northland Power
Belleville North and Belleville South Solar Projects

First Public Meeting: Wednesday August 25, 2010

1. Please indicate whether your interest is pertinent to one or both of the proposed Project(s) by circling one or both of the following:

Belleville North ~~X~~

Belleville South

2. Please describe where you reside in relation to the Project location(s)?

Less than $\frac{1}{2}$ miles west of
Belleville North (located on
Melleville Creek)

⁴
3. Please provide any relevant information related to the Project location(s) which, in your opinion, should be considered in assessing the potential effects of the Project(s)?

① location of both North & South in relation to Mt View Airport.

② Traffic during Construction

③ Cosmetic looks of both Projects especially Belleville North.

④ Property values will decrease due to Projects.

⑤ How far back from the road the parcels will start.

⑥ Noise level produced - (my son lives within the border area).

Continued on back

⑦ Is there any way we could see a computer generated photo of what the finished project would look like (cont'd)

4. Please provide any comments, questions or concerns related to the Project(s).

refer to question 3 (cont'd).

- ⑧ What are the long term ^{health} effects of the power going from the inverters.
- ⑨ If project is not a success (ie boncrsept) who looks after the de-commissioning of the project?
- ⑩ 45,000-55000 salary perils - how many big units.

If you would you like to be included on the Project mailing list, please provide your name and full mailing address below:

Name: Wayne & Carole Vincent

Mailing Address (including your postal code):

492 BURR ROAD
RR#2, Ameliasburg, Ont
K0K-1A0

WE WELCOME YOUR INPUT. PLEASE COMPLETE AND SUBMIT THIS COMMENT SHEET BEFORE LEAVING - THANK YOU

Alternatively, if you prefer to mail/fax your response, please do so within 30 days to:

Sean Male, Environmental Coordinator
4342 Queen St, Suite 500, Niagara Falls, Ontario, L2E 7J7
Phone: 905-374-5200 Fax: 905-374-1157

Please notify us of the ^{date of the} 2nd public meeting.

Comment Sheet

Northland Power
Belleville North and Belleville South Solar Projects

First Public Meeting: Wednesday August 25, 2010

1. Please indicate whether your interest is pertinent to one or both of the proposed Project(s) by circling one or both of the following:

Belleville North

Belleville South

2. Please describe where you reside in relation to the Project location(s)?

2 KM WEST OF SITE, ON
BURR ROAD

3. Please provide any relevant information related to the Project location(s) which, in your opinion, should be considered in assessing the potential effects of the Project(s)?

THE RESIDENTS OF BURR
ROAD, DO NOT NEED A SOLAR
FARM IN THE AREA, AS
THERE ARE SEVERAL HOMES
LOCATED NEAR THE LOCATION

Continued on back



4. Please provide any comments, questions or concerns related to the Project(s).

MORE INFORMATION IS NEEDED
ABOUT THIS PROJECT

SIZE, HEIGHT, DISTANCE FROM
ROAD, ETC, NOISE LEVEL.

If you would you like to be included on the Project mailing list, please provide your name and full mailing address below:

Name: RONALD D HOUGH

Mailing Address (including your postal code):

748 BURR ROAD

RR # 2 AMELIASBURG ON
KOK-1A0

WE WELCOME YOUR INPUT. PLEASE COMPLETE AND SUBMIT THIS COMMENT SHEET BEFORE LEAVING - THANK YOU

Alternatively, if you prefer to mail/fax your response, please do so within 30 days to:

Sean Male, Environmental Coordinator
4342 Queen St, Suite 500, Niagara Falls, Ontario, L2E 7J7
Phone: 905-374-5200 Fax: 905-374-1157

Comment Sheet

Northland Power
Belleville North and Belleville South Solar Projects

First Public Meeting: Wednesday August 25, 2010

1. Please indicate whether your interest is pertinent to one or both of the proposed Project(s) by circling one or both of the following:

Belleville North

Belleville South

2. Please describe where you reside in relation to the Project location(s)?

directly across road.

3. Please provide any relevant information related to the Project location(s) which, in your opinion, should be considered in assessing the potential effects of the Project(s)?

traffic -

directly out living room window.

set back from road?

Continued on back



4. Please provide any comments, questions or concerns related to the Project(s).

traffic - building, people looking
dirt during construction
noise during construction
what happens to property value?
Are you willing to buy our property
so we can relocate to enjoy the
views we moved to the County for?

If you would you like to be included on the Project mailing list, please provide your name and full mailing address below:

Name: Nancy Stafford

Mailing Address (including your postal code):

40 Burr Rd
RR# 2. Ameliasburg K0K1A0

WE WELCOME YOUR INPUT. PLEASE COMPLETE AND SUBMIT THIS COMMENT SHEET BEFORE LEAVING - THANK YOU

Alternatively, if you prefer to mail/fax your response, please do so within 30 days to:

Sean Male, Environmental Coordinator
4342 Queen St, Suite 500, Niagara Falls, Ontario, L2E 7J7
Phone: 905-374-5200 Fax: 905-374-1157



Northland Power

Welcomes You to the First Public Meeting

*for the Belleville North Solar Project
and Belleville South Solar Project*

Wednesday, August 25, 2010

6:00 pm to 9:00 pm

Allisonville Townhall, 11 Dutch Road (off County Road 2)

Prince Edward County, ON



Purpose of this Public Meeting

A public meeting to solicit stakeholder input is an important aspect of the Renewable Energy Approval (REA) process and project planning.

This public meeting provides an opportunity to:

- Gain further understanding about Northland Power's proposed solar energy projects in your area
- Obtain information about the REA Process
- Ask questions regarding the proposed Projects
- Raise concerns or issues regarding the proposed Projects

How can I provide comments or concerns?

A variety of methods are available for providing comments or concerns. You can:

1. Fill out a comment form provided at this public meeting. This form can also be used to register your name and mailing address so you are included on the Project mailing lists.
2. Discuss your comments or concerns with one of the representatives of Northland Power or Hatch present at this public meeting.
3. Contact the Environmental Coordinator for the Project via the following information:

Sean Male, MSc
Environmental Coordinator
Hatch Ltd.
Address: 4342 Queen Street, Suite 500
Niagara Falls, Ontario,
L2E 7J7
Phone: 905-374-0701 Ext 5280
Fax: 905-374-1157
Email: smale@hatch.ca

For more information please visit:

www.northlandpower.ca



Northland Power

Northland Power develops and operates clean and green power generation facilities, mainly in the provinces of Ontario and Quebec, with Saskatchewan being added to that list shortly. Our facilities produce about 900 MW of electricity. Northland Power has been in business since 1987 and has been publicly traded since 1997.

Sustainability is a core value at Northland Power. All of our development efforts and operational practices focus on providing long term benefits to our customers, investors, employees, communities and partners.

For Northland Power, sustainability has many dimensions:

Environmental: Northland Power was founded on the belief that clean and green energy sources are vital to the future of our planet. Our construction and operational practices are engineered to meet the highest environmental standards, even in jurisdictions where lower standards are legislated.

Community: Northland Power takes an active interest in its host communities to ensure they remain vibrant, healthy places to live.

Operational: Northland Power maintains and reinvests in their operating assets to achieve maximum efficiency and economic life.

Health and Safety: Ensuring that our staff has the knowledge, tools and time to work safely is Northland's first priority. Our culture of safety, respect and independence helps to ensure we attract and retain the people that we need to perform.

Financial: Northland Power consistently chooses long term success over short term gain. Northland Power only pursues projects that meet strict return thresholds and have creditworthy customers. As a result, we have paid stable monthly dividends since 1997.

HATCH™

Northland Power has retained Hatch Ltd. to undertake the Renewable Energy Approval (REA) process, subject to the provisions of the Environmental Protection Act Part V.0.1 and Ontario Regulation 359/09. Hatch is an Ontario-based consulting, engineering and management company with operations worldwide and a reputation for excellence acquired over 80 years of continuous service to its clients. Hatch will undertake the REA process from its Niagara Falls, Ontario office.



Solar Technology

A solar photovoltaic (PV) module (or panel, as they are often called) transforms the sun's energy into electrical energy. Silicon, a semi-conductor, is the material that transforms a ray of sunshine into electricity. The silicon is located within a grid (commonly made of metal) that conducts electricity. When the sunlight hits the silicon, electrons flow from the silicon into the grid, thereby producing electricity. The silicon and metallic grid are located beneath a layer of glass to provide weather protection. The glass has a special coating applied to maximize the capture of sunlight by the panel, thereby reducing glare.

Advantages of Solar Energy

Solar power has a multitude of advantages compared to most other power generation technologies.

- First and foremost, the fuel is free. As the cost of many fossil fuels is expected to increase in the future, having solar energy on the grid at a set price will give greater stability to future energy prices.
- Another key benefit is the absence of any green house gas emissions and other pollutants. This ensures that the local community will not have to live with poor air quality or noxious odours.
- Solar PV systems are comprised of safe, common materials that will not affect the lands on which they are located, allowing for easy remediation upon decommissioning.
- Most solar PV systems have no moving parts, unlike almost all other power generation technologies. Having no moving parts reduces the environmental impact, maintenance costs, and noise levels of this type of power generation.
- There is a natural supply/demand match that is inherent to solar power, as the sun rises and sets in parallel with society's general daily electricity demand pattern. This helps mitigate the need for the development of other technologies that traditionally meet peak electricity demand.



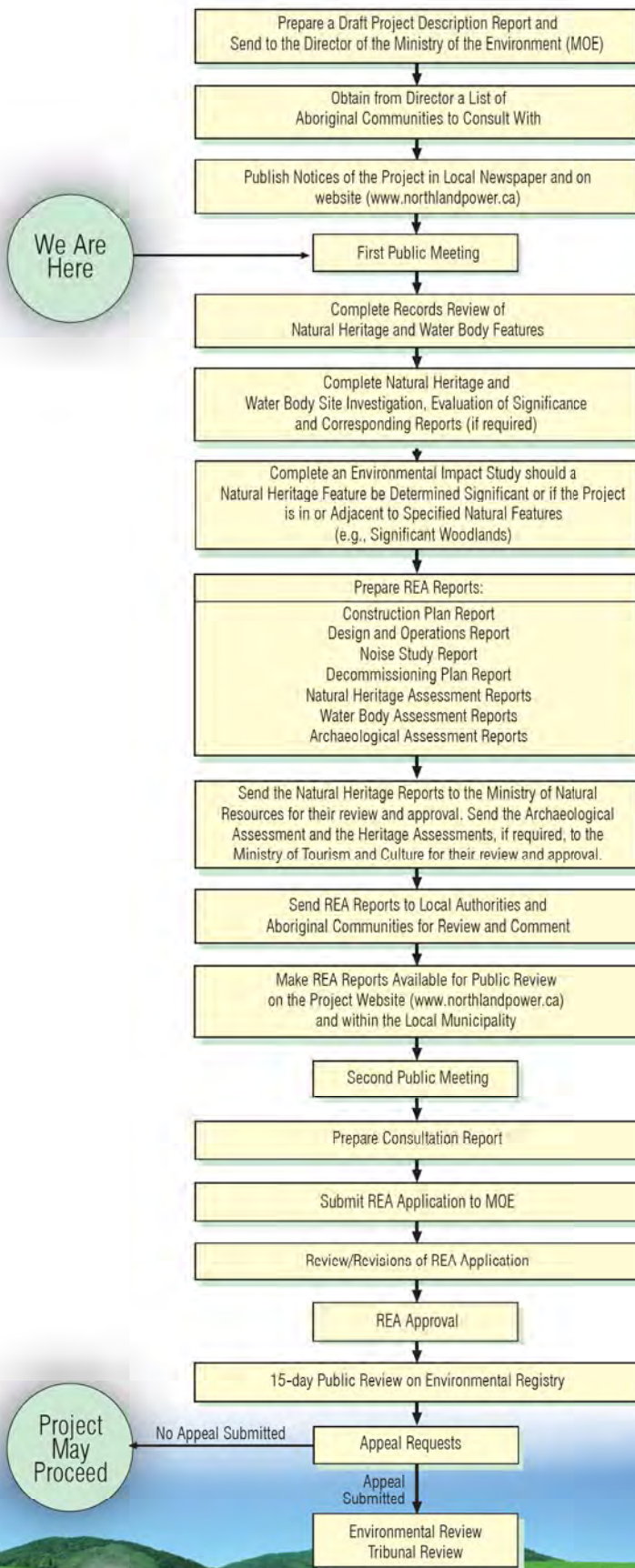
Ontario's Feed-in-Tariff (FIT) program was launched by the Ontario Power Authority on October 1, 2009 to encourage the development of renewable energy resources and to stimulate growth in green technology and renewable power industries.

The Ontario Power Authority awarded 184 FIT contracts to renewable power developers in Ontario on April 8, 2010. Northland Power was awarded a total of 13 contracts for proposed solar ground-mount developments throughout the province. These projects are currently proceeding through the REA process.

Renewable Energy Approval Process

The proposed Project is subject to the (REA) process, subject to the provisions of Part V.0.1 of the Environmental Protection Act and Ontario Regulation 359/09. The REA process entails consideration of environmental aspects, including natural heritage features and water bodies, as well as heritage and archaeological resources. In addition, the REA process includes public, government agency and First Nation consultation.

The main components of the REA process are shown in the flow diagram.



We Are Here

Project May Proceed

Belleville North Solar Project

Project Location

The proposed Project is located on Burr Road, west of the Hamlet of Crofton within Prince Edward County. The proposed Project, if approved, will be constructed on privately owned lands.

Project Description

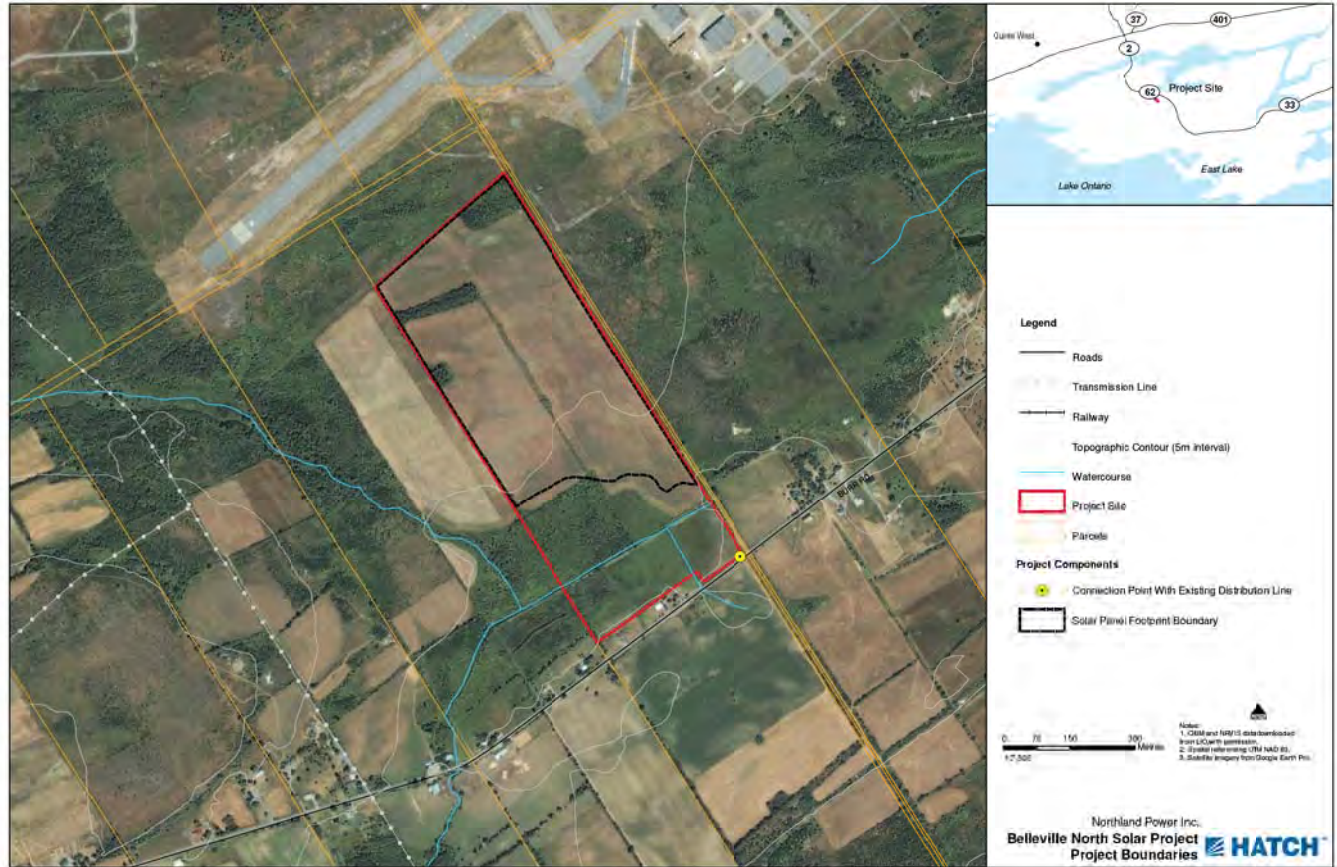
The proposed Belleville North Solar Project is considered to be a Class 3 solar facility, as defined under the Environmental Protection Act (Act) Part V.0.1 and Ontario Regulation 359/09. Class 3 solar facilities are defined as having a name plate capacity of 10 kilowatts (kW) or greater and the solar panels are mounted on the ground. Specifically, this proposed Project has a nameplate capacity of 10MW (ac).

The proposed Project will use crystalline technology photovoltaic (PV) panels installed on ground-mounted rack structures made of steel and aluminum. The panels will be tilted and fixed in place (i.e., they will not move to track the sun). The project will consist of approximately 50,000 panels and will be designed to optimize energy production.

Project Schedule – Belleville North Solar Project

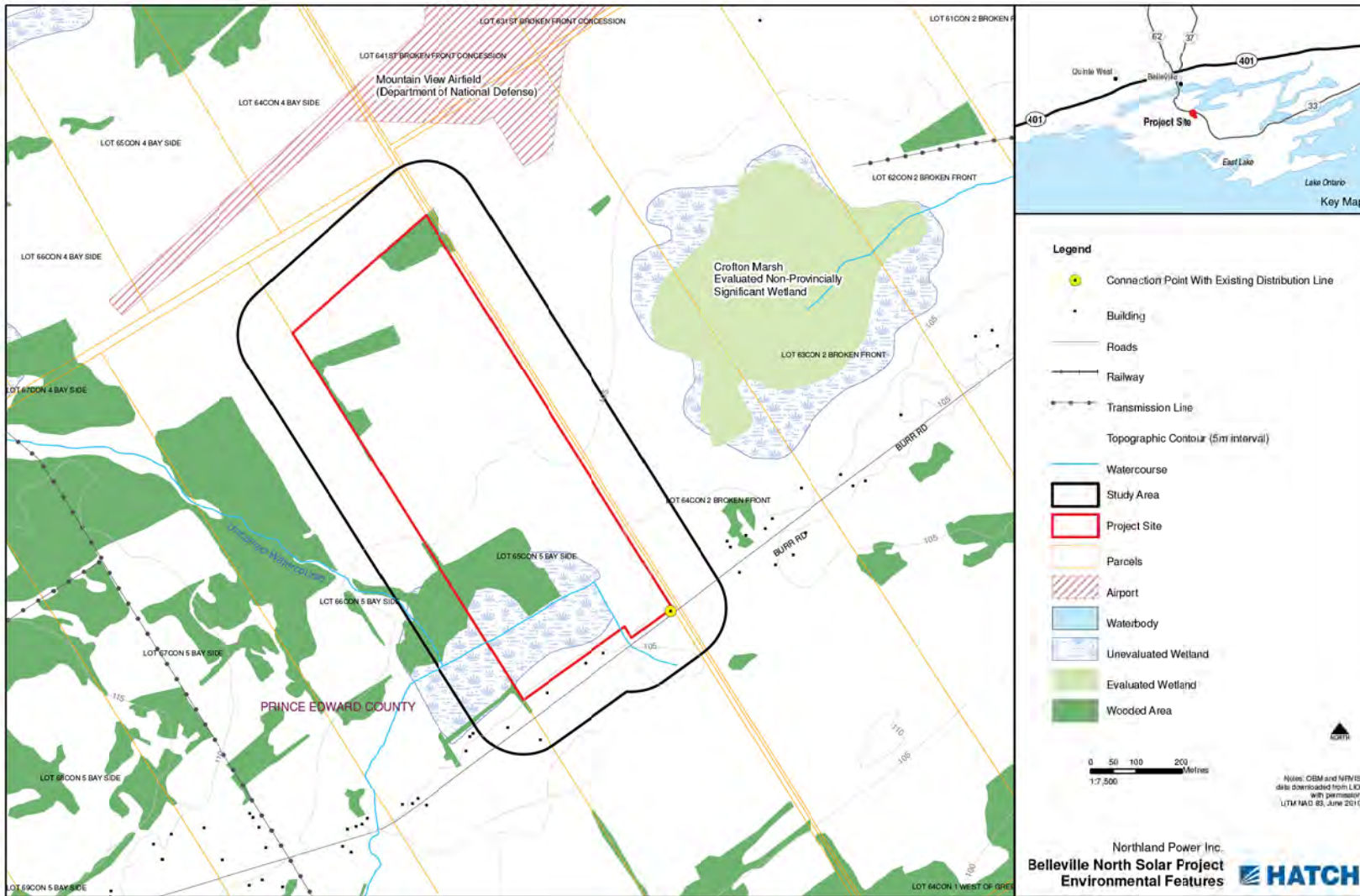
FIT Application – November 2009
Submission of Project Description to MOE – April 2010
FIT Contract Award – April 2010
First Public Meeting – August 2010
Second Public Meeting – November 2010
REA Application Submission – December 2010
REA Received – April/June 2011
Start of Construction – April/June 2011
Commercial Operation Date – December 2011

For more information regarding this Project please visit the Project website at northlandpower.ca/bellevillenorth.



Belleville North Solar Project

Environmental Features



Belleville North Solar Project

Natural Heritage Features

As per Ontario Regulation 359/09, both a records review and site investigation were conducted in order to identify environmental features of the Project site and surrounding area. A variety of features were identified and considered during this process, including but not limited to the following:

- Wildlife/Wildlife habitat
- Vegetation communities, including woodlands and wetlands
- Valleylands
- Species at risk
- Waterbodies

Terrestrial Environment

The Project site is composed primarily of agricultural lands, used in the production of hay. There are hedgerows on the Project site. There are some small wooded areas located on the Project site, with larger wooded areas located adjacent to the site. There is a small wetland area located southwest of the Project site.

Wildlife species observed on the Project's site were typical of agricultural environments, and included Wild Turkey, Northern Harrier, and Horned Lark. No species currently listed on the Species at Risk Act or the Endangered Species Act were recorded during the site investigations.



Aquatic Environment

A tributary of Melville's Creek crosses the southern section of the Project site. It originates in two excavated drains that flow onto the site and converge to flow through a meadow marsh area before leaving the property. A second watercourse drains into this tributary approximately 110 m west of the Project site. Melville's Creek is located approximately 2.5 km downstream.

The meadow marsh area surrounding the tributary on the Project site is maintained by groundwater seepage from the adjacent areas. This groundwater likely provides baseflow for the watercourse.



More information on the findings of these studies will be available in the Natural Heritage and Water Bodies Reports that will be posted to the project website (www.northlandpower.ca/bellevillenorth). A notification will be mailed to those on the mailing list and published in the local newspaper when these are available.



Belleville North Solar Project

Potential Negative Environmental Effects and Mitigation Measures

Environmental Component	Potential Environmental Effect	Proposed Mitigation
Physiography/Topography	During construction, regrading of excavated soils and some minor alterations to local topography may occur.	Decommissioning of the Project site will include regrading to original conditions, to the greatest extent possible.
Soils	Reductions in soil quality/loss of soils as a result of accidental spills, erosion and soil compaction during construction.	The use of erosion and sedimentation control, soil loosening, and spill prevention and response measures will limit the impact on soils.
Aggregate Resources	Not applicable.	Not applicable
Surface Water	Surface water quality of the tributary of Melville Creek could be impaired due to contamination from accidental spills or increased turbidity due to site erosion.	A 30-m setback will be put in place from all water bodies. As well, erosion and sedimentation control measures and spill prevention and response measures will decrease any further impacts.
Groundwater	Excavations may result in a minor, localized drop in the groundwater table due to dewatering. In addition, groundwater may also be impaired by contamination due to accidental spills.	Spill response measures will prevent any accidental spills. Dewatering during construction anticipated to be minimal.
Aquatic Habitats/Biota	The installation of a culvert on the tributary could potentially result in negative impacts to fish and fish habitat.	Watercourse crossing will be designed to mitigate potential impacts on aquatic habitats/biota
Areas of Natural and Scientific Interest (ANSI)	Not applicable as there are no ANSI identified within 300 m of the Project site.	Not applicable
Wetlands	Wetlands adjacent to the Project site may be indirectly affected by Project activities, such as the generation of dust during construction which could impact vegetation communities.	Mitigation measures proposed in respect of vegetation communities and surface water quality will be effective at mitigation potential effects on the wetland community.
Vegetation	Vegetation clearing on agricultural land as well as within natural vegetation communities will be required.	Work areas will be flagged to limit the extent of clearing
Woodlands	Clearing of the woodlands on the Project site may be required. Woodlands adjacent to the Project site may be indirectly affected by Project activities, such as the generation of dust during construction which could impact vegetation communities.	Woodland clearing to be minimized where possible. Dust control measures will be implemented during the construction period.
Valleylands	Not applicable as there are no valleylands identified within 300 m of the Project site.	Not applicable
Terrestrial Wildlife/Wildlife Habitat (including species at risk)	Potential loss of wildlife habitat and potential wildlife avoidance of the Project area during construction and operation may occur as a result of disturbance.	Work areas will be clearly marked and will not infringe further than necessary. Mitigation measures will include not clearing in bird breeding season, if required.
Air Quality	Reductions in local air quality from operation of construction equipment and dust displacement may occur due to vehicle traffic.	Through the use of standard best management practices and mitigation measures dust will be suppressed and discharge of exhaust minimized to maintain local air quality during construction.
Social Environment		
Land Use	Current land use will be discontinued within the Project footprint.	After decommissioning, there is a potential for the land to regain the past use.
Tourism and Recreation	Any tourism or recreational resources existing within the immediate Project vicinity will be considered in determining potential impacts.	Visual screening in those areas will be considered, if required.
Archaeological and Cultural Heritage Resources	Excavations during Project construction may result in the discovery of archaeological resources. Archaeological assessments will be conducted to determine potential. Potential heritage resources will be determined as per the requirements of the Ministry of Tourism and Culture.	Mitigation measures recommended as a result of the archaeological or heritage assessments, if required, will be implemented as required.
Sound Levels	Temporary disturbance to neighbouring residents may occur during construction. The operation of inverters and transformers may result in increased ambient sound levels.	Noise studies will be conducted as per O. Reg. 359/09 to ensure noise during operations meets provincial guidelines. Construction will be conducted according to local noise by-laws, where applicable.
Visual Landscape	Installation of the Project will result in a change to the local landscape.	Visual barriers may be installed, where necessary, if this is determined to be effective and viable.
Community Safety	Construction of the Project will result in a risk to community and workforce safety. During operation, potential risks to public safety are limited.	Safety procedures will be followed to ensure both worker and public safety.
Local Traffic	Construction of the Project may result in increased local area traffic and temporary disruption along routes used resulting in delays to the local community traffic, and increased traffic as a result of equipment delivery to the Project site.	Transportation routes will be determined to minimize the impact on local traffic.
Waste Management and Disposal Sites	Construction and operation of the Project will likely result in the generation of recyclable material, and municipal hazardous and sanitary waste.	The disposal and proper storage of wastes and recyclables will occur.

Belleville South Solar Project

Project Location

The proposed Project is located on Highway 62, south of the Hamlet of Crofton within Prince Edward County. The proposed Project, if approved, will be constructed on privately owned lands.

Project Description

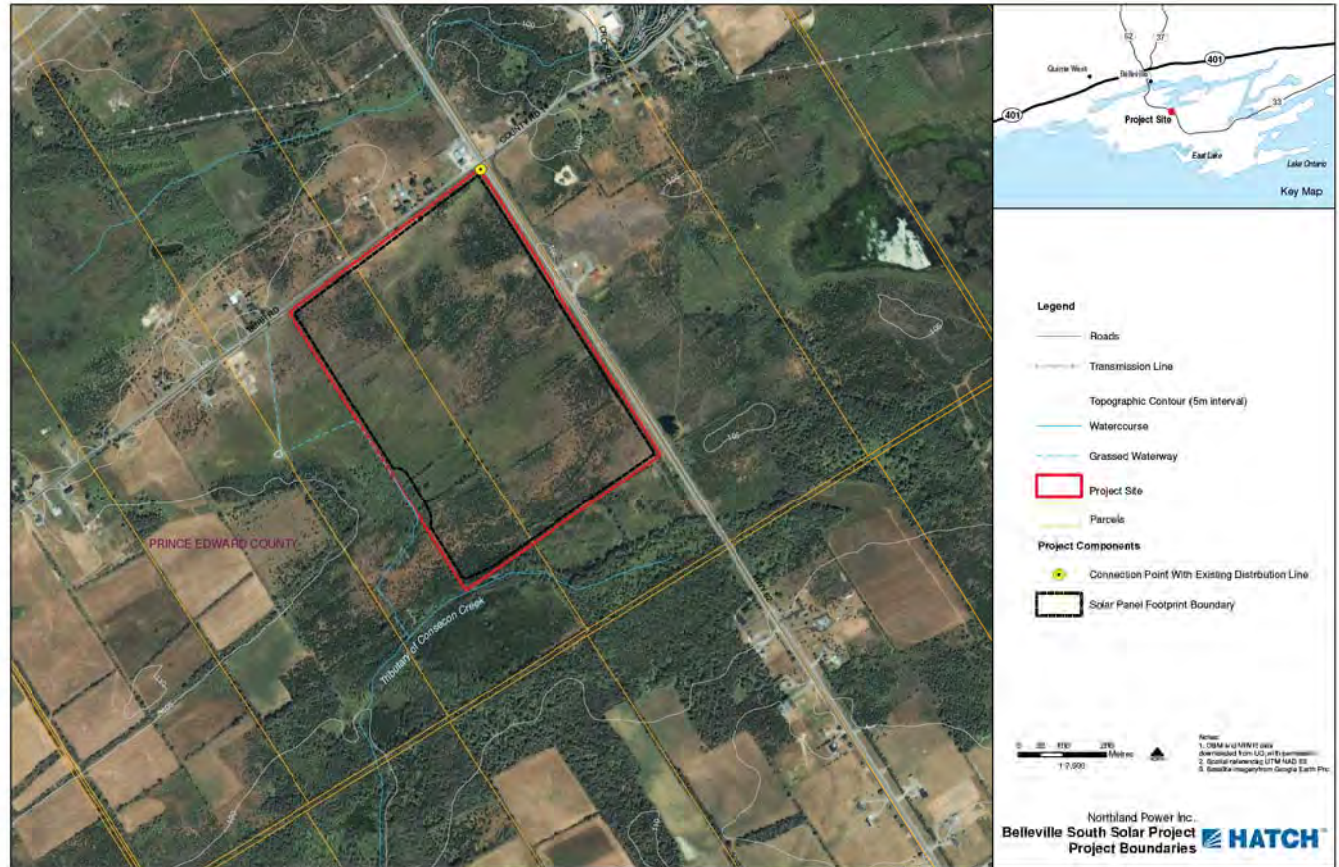
The proposed Belleville South Solar Project is considered to be a Class 3 solar facility, as defined under the Environmental Protection Act (Act) Part V.0.1 and Ontario Regulation 359/09. Class 3 solar facilities are defined as having a name plate capacity of 10 kilowatts (kW) or greater and the solar panels are mounted on the ground. Specifically, this proposed Project has a nameplate capacity of 10MW (ac).

The proposed Project will use crystalline technology photovoltaic (PV) panels installed on ground-mounted rack structures made of steel and aluminum. The panels will be tilted and fixed in place (i.e., they will not move to track the sun). The project will consist of approximately 50,000 panels and will be designed to optimize energy production.

Project Schedule – Belleville South Solar Project

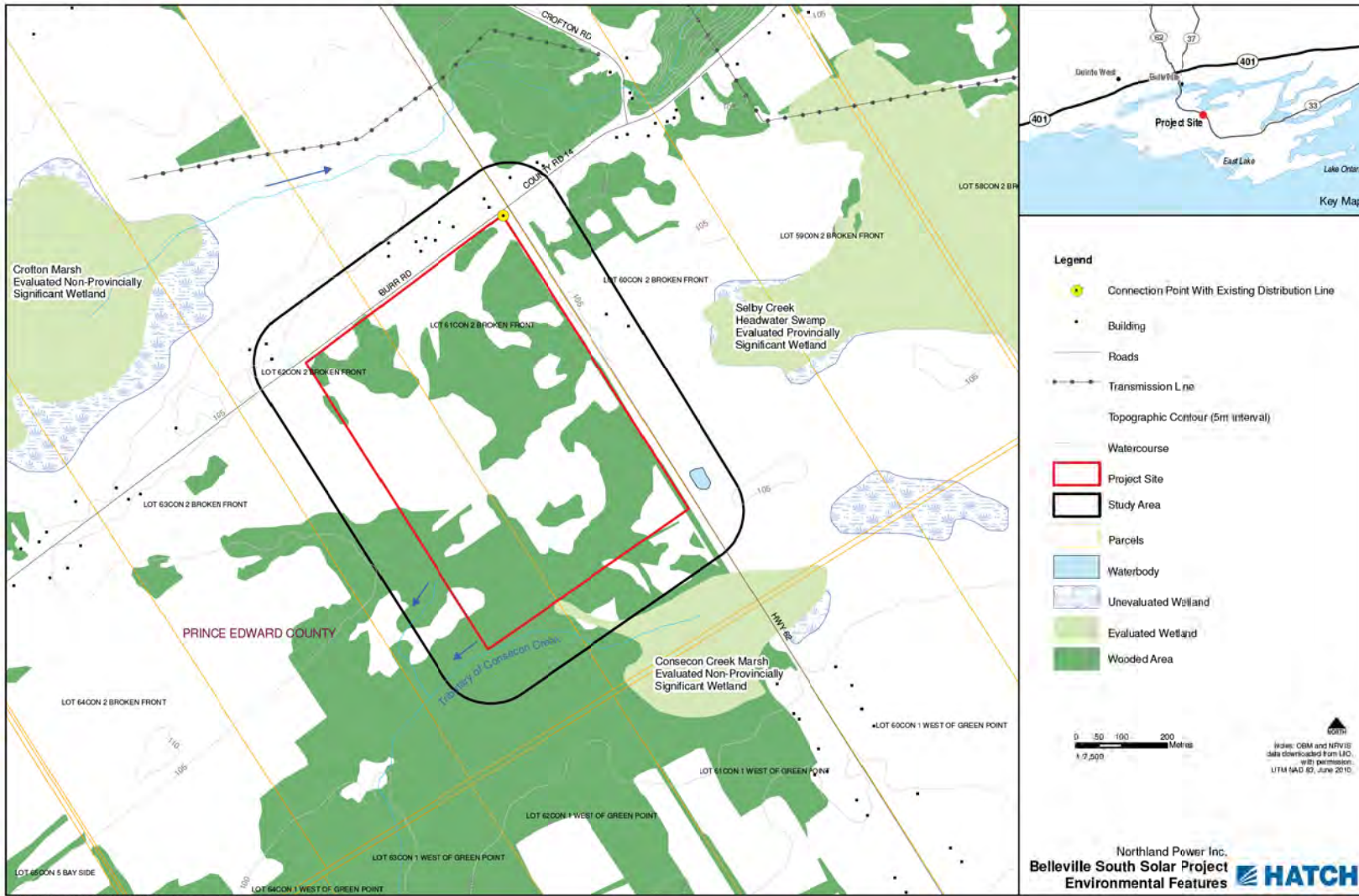
FIT Application – November 2009
Submission of Project Description to MOE – April 2010
FIT Contract Award – April 2010
First Public Meeting – August 2010
Second Public Meeting – November 2010
REA Application Submission – December 2010
REA Received – April/June 2011
Start of Construction – April/June 2011
Commercial Operation Date – December 2011

For more information regarding this Project please visit the Project website at northlandpower.ca/bellevillesouth.



Belleville South Solar Project

Environmental Features



Belleville South Solar Project

Natural Heritage Features

As per Ontario Regulation 359/09, a records review and site investigation were conducted in order to identify environmental features of the Project site and surrounding area. A variety of features were identified and considered during this process, including but not limited to the following:

- Wildlife/Wildlife habitat
- Vegetation communities, including woodlands and wetlands
- Valleylands
- Species at risk
- Waterbodies

Terrestrial Environment

The Project site is composed of open fields, wet meadows, and woodlands used for cattle pasture. Woodlands on the project site are dominated either be eastern red cedar or green ash. There are wooded areas located adjacent to the Project site, and a small portion of the Consecon Creek Swamp evaluated non-provincially significant wetland occurs along the southern boundary of the Project site.

White-tailed deer, wild turkeys, and wood frogs were recorded on the Project site, though overall there was relatively little wildlife activity when compared with other areas nearby.

Milksnake, a Special Concern species under the Species at Risk Act and the Endangered Species Act were recorded on the Project site. Milksnake are a habitat generalist and are commonly found in and around agricultural lands and manmade structures. Mitigation measures will be taken to ensure Milksnake are not impacted as a result of construction and maintenance activities, and suitable habitat will remain available to Milksnake throughout the life of the Project. Overall, no significant impact on Milksnake is expected.



Aquatic Environment

There are no waterbodies on the Project site. However, two tributaries of Consecon Creek are located within 120 m of the Project site boundary. There are also several grassed drainage swales adjacent to the Project site.

More information on the findings of these studies will be available in the Natural Heritage and Water Bodies Reports that will be posted to the project website (www.northlandpower.ca/bellevillesouth). A notification will be mailed to those on the mailing list and published in the local newspaper when these are available.

**NORTHLAND
POWER**



Belleville South Solar Project

Potential Negative Environmental Effects and Mitigation Measures

Environmental Component	Potential Environmental Effect	Proposed Mitigation
Physiography/Topography	During construction, re-grading of excavated soils and some minor alterations to local topography may occur.	Decommissioning of the Project site will include regrading to original conditions, to the greatest extent possible.
Soils	Reductions in soil quality/loss of soils as a result of accidental spills, erosion and soil compaction during construction.	The use of erosion and sedimentation control, soil loosening, and spill prevention and response measures will limit the impact on soils.
Aggregate Resources	Not applicable.	Not applicable
Surface Water	Surface water quality of the tributaries of Melville Creek could be impaired due to contamination from accidental spills or increased turbidity due to site erosion.	A 30-m setback will be put in place from all water bodies. As well, erosion and sedimentation control measures and spill prevention and response measures will minimize potential for impacts.
Groundwater	Excavations may result in a minor localized decrease in the groundwater table around the excavation if dewatering is necessary. Groundwater may also be impaired by contamination due to accidental spills.	Spill prevention and response measures will prevent groundwater contamination. Dewatering during excavations will be minimized.
Aquatic Habitats/Biota	The installation of the Project may result in indirect effects due to erosion and sedimentation and changes in surface water runoff.	30-m setbacks from all waterbodies will be implemented to protect surface water runoff quality. Stormwater management plan implemented to control surface runoff.
Areas of Natural and Scientific Interest (ANSI)	Not applicable as there are no ANSI identified within 300 m of the Project site.	Not applicable
Wetlands	Wetlands adjacent to the Project site may be indirectly affected by Project activities, such as the generation of dust during construction which could impact vegetation communities.	Mitigation measures proposed in respect of vegetation communities and surface water quality will be effective at mitigation potential effects on the wetland community.
Vegetation	Vegetation clearing on agricultural land as well as within natural vegetation communities will be required.	Work areas will be flagged to limit the extent of clearing
Woodlands	Clearing of the woodlands on the Project site may be required. Woodlands adjacent to the Project site may be indirectly affected by Project activities, such as the generation of dust during construction which could impact vegetation communities.	Woodland clearing to be minimized where possible. Dust control measures will be implemented during the construction period.
Valleylands	Not applicable as there are no valleylands identified within 300 m of the Project site.	Not applicable
Terrestrial Wildlife/Wildlife Habitat (including species at risk)	Potential loss of wildlife habitat and potential wildlife avoidance of the Project area during construction and operation may occur as a result of disturbance.	Work areas will be clearly marked and will not infringe further than necessary. Mitigation measures will include not clearing in bird breeding season, if required.
Air Quality	Reductions in local air quality from operation of construction equipment and dust displacement may occur due to vehicle traffic.	Through the use of standard best management practices and mitigation measures dust will be suppressed and discharge of exhaust minimized to maintain local air quality during construction.
Social Environment		
Land Use	Current land use will be discontinued within the Project footprint.	After decommissioning, there is a potential for the land to regain the past use.
Tourism and Recreation	Any tourism or recreational resources existing within the immediate Project vicinity will be considered in determining potential impacts.	Visual screening in those areas will be considered, if required.
Archaeological and Cultural Heritage Resources	Excavations during Project construction may result in the discovery of archaeological resources. Archaeological assessments will be conducted to determine potential. Potential heritage resources will be determined as per the requirements of the Ministry of Tourism and Culture.	Mitigation measures recommended as a result of the archaeological or heritage assessments, if required, will be implemented as required.
Sound Levels	Temporary disturbance to neighbouring residents may occur during construction. The operation of inverters and transformers may result in increased ambient sound levels.	Noise studies will be conducted as per O. Reg. 359/09 to ensure noise during operations meets provincial guidelines. Construction will be conducted according to local noise by-laws, where applicable.
Visual Landscape	Installation of the Project will result in a change to the local landscape.	Visual barriers may be installed, where necessary, if this is determined to be effective and viable.
Community Safety	Construction of the Project will result in a risk to community and workforce safety. During operation, potential risks to public safety are limited.	Safety procedures will be followed to ensure both worker and public safety.
Local Traffic	Construction of the Project may result in increased local area traffic and temporary disruption along routes used resulting in delays to the local community traffic, and increased traffic as a result of equipment delivery to the Project site.	Transportation routes will be determined to minimize the impact on local traffic.
Waste Management and Disposal Sites	Construction and operation of the Project will likely result in the generation of recyclable material, and municipal hazardous and sanitary waste.	The disposal and proper storage of wastes and recyclables will occur.

Next Steps

- All further Project Reports (such as the Construction Plan Report, Archaeological Assessment Report, etc) will be available for public review on the Project websites and at your local municipal office.
- The Notice of the availability of the reports and the Final Public Meeting will be advertised in the local paper and information will be sent to all those on the Project mailing list. You can be included on the mailing list by filling out a comment sheet with the appropriate mailing address.
- Finally, any written comments or concerns will be addressed within the Consultation Report as a part of the REA submission, which will be available for public review.



We appreciate your attendance at this first public meeting and hope to see you at the next one. Thank you.

Your opinion is important to us,

Please Sign in and Complete a Comment Sheet

