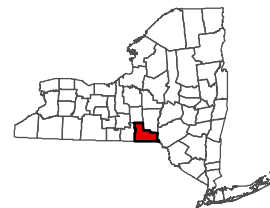
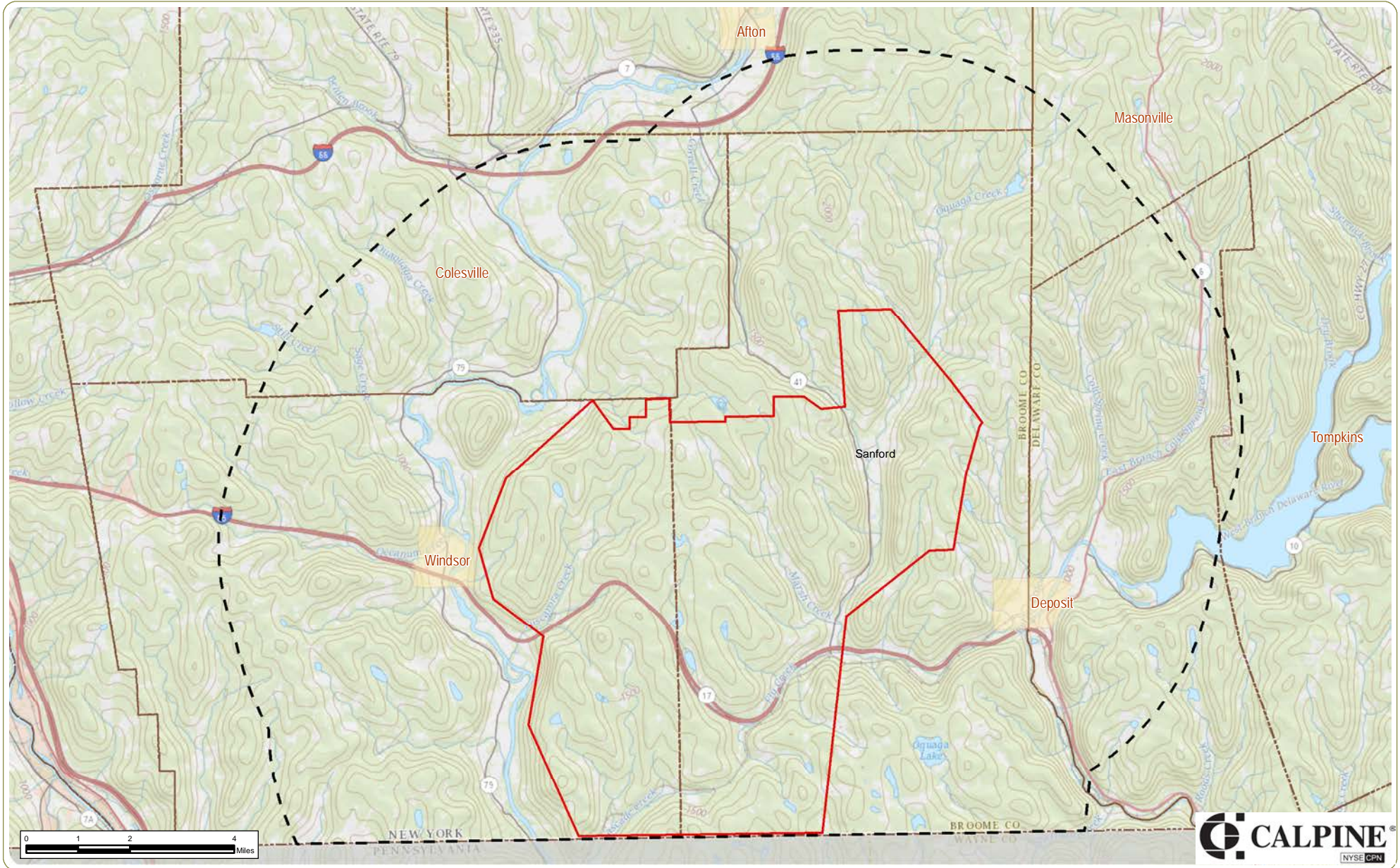


**Bluestone Wind Project**  
 Town of Windsor and Sanford - Broome County, New York  
 Preliminary Scoping Statement  
 Figure 1. Regional Facility Location




- Notes: 1. Basemap: ESRI ArcGIS Online "Shaded Relief" map service, and ESRI StreetMap North America, 2008.
- 2. This map was generated in ArcMap on July 26, 2017.
- 3. This is a color graphic. Reproduction in grayscale may misrepresent the data.

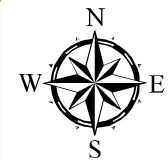




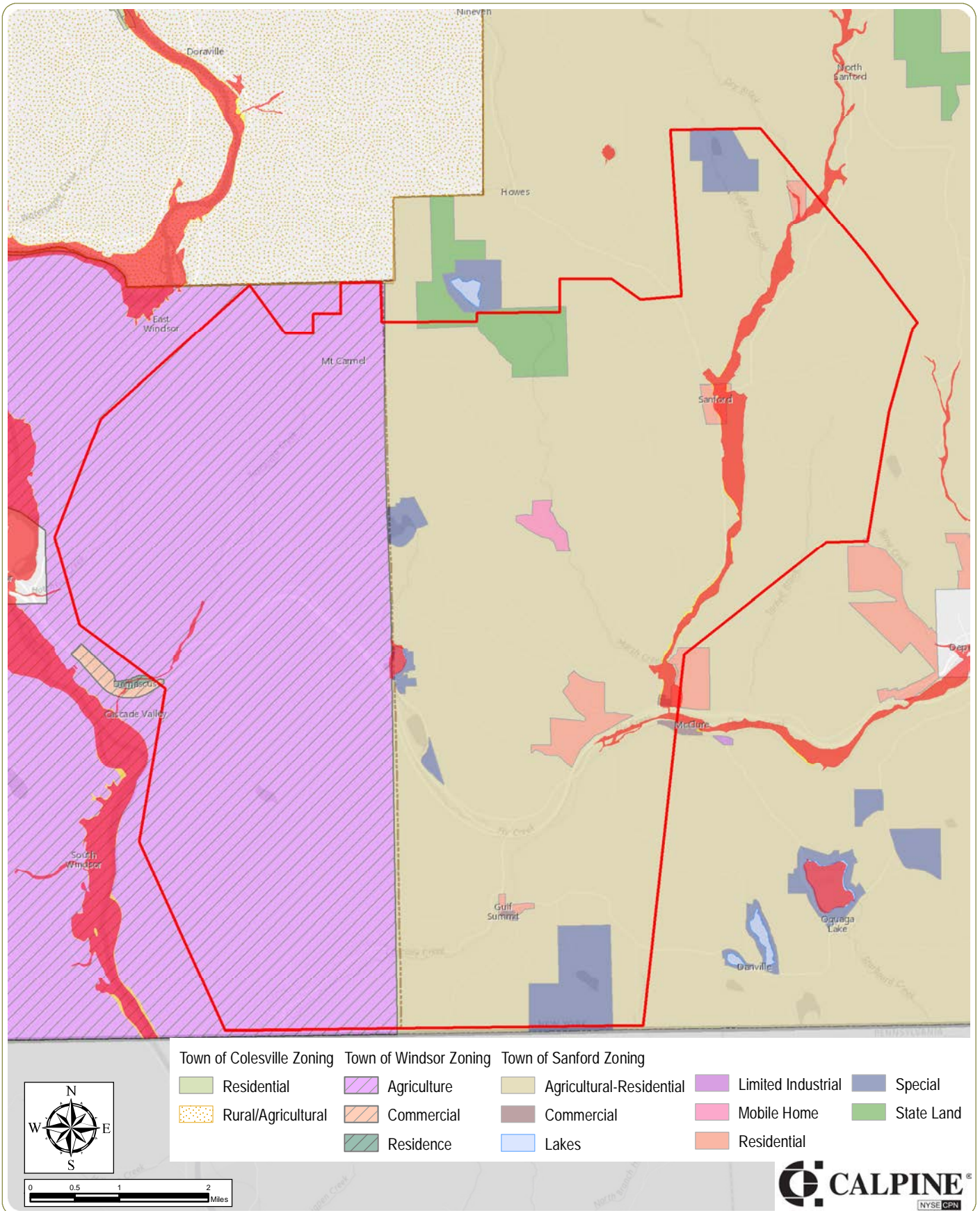
**Bluestone Wind Project**  
 Towns of Windsor and Sanford, Broome County, NY  
 Preliminary Scoping Statement  
 Figure 2. Facility Area and 5-Mile Study Area

- Notes: 1. Basemap: "USGS TNM Topo Base Map" displayed via the USGS Topo Map Server.  
 2. This map was generated in ArcMap on August 2, 2017.  
 3. This is a color graphic. Reproduction in grayscale may misrepresent the data.

-  Town Boundary
-  Facility Area
-  5-Mile Study Area



www.edrdpc.com



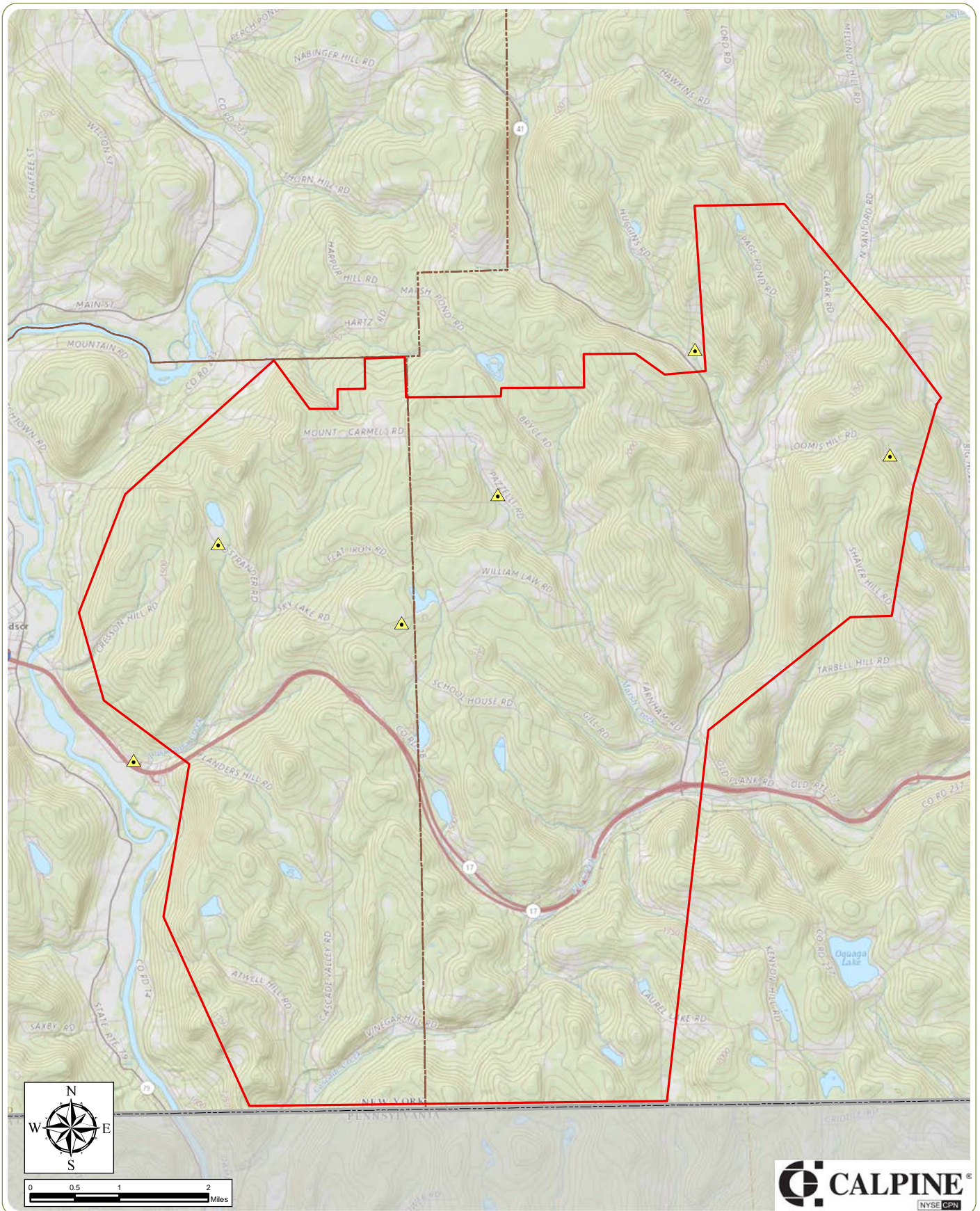
**Bluestone Wind Project**  
 Towns of Windsor and Sanford, Broome County, NY  
 Preliminary Scoping Statement

**Figure 3: Town Zoning and FEMA Flood Districts**



- Notes: 1. Basemap: ESRI ArcGIS Online "World Light Gray Canvas Base" map service.  
 2. Zoning data provided by Broome County GIS and Mapping Services.  
 3. This map was generated in ArcMap on August 2, 2017.  
 4. This is a color graphic. Reproduction in grayscale may misrepresent the data.

- FEMA Special Flood Hazard Area
- FEMA 500-year Floodplain
- Facility Area

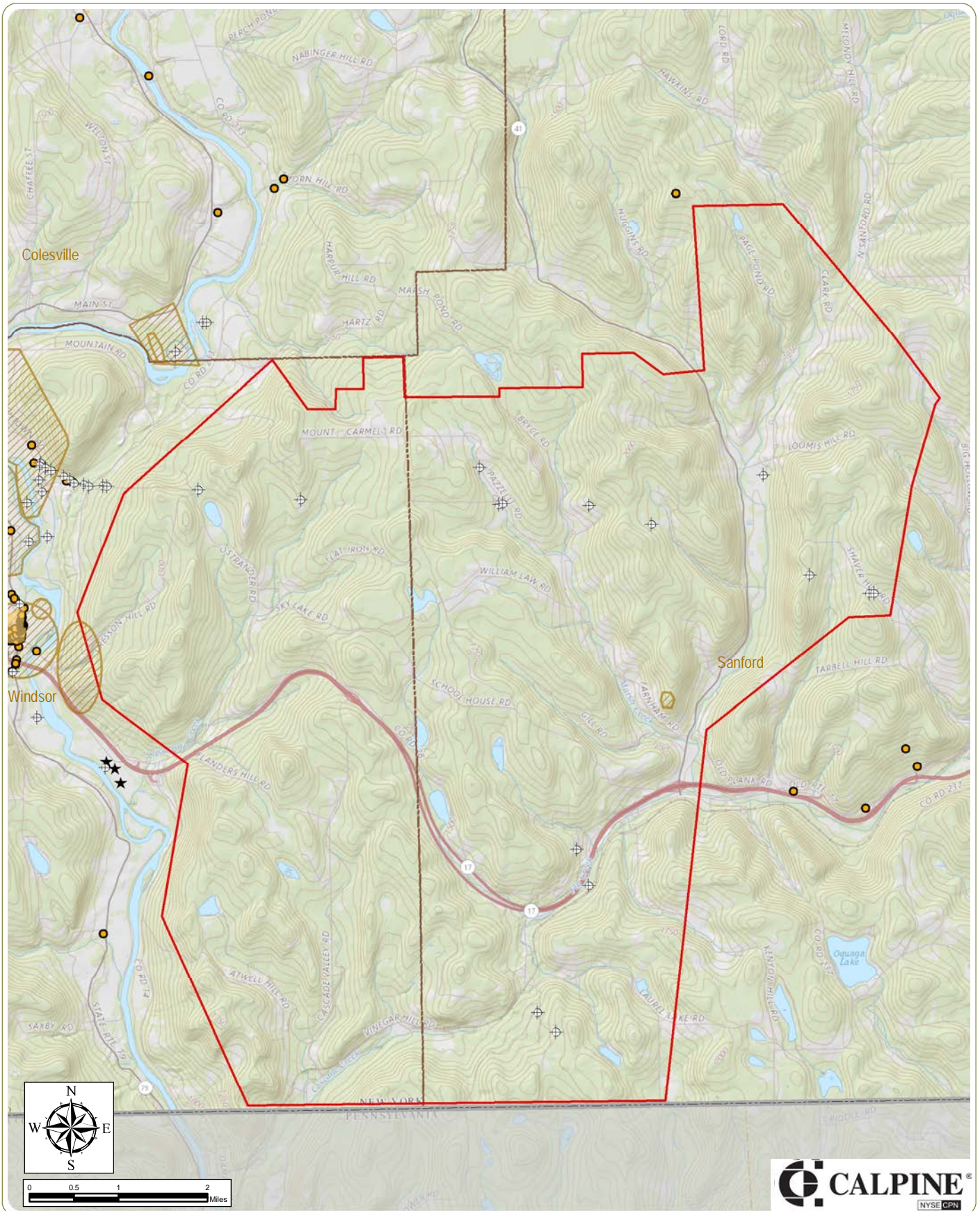




**Bluestone Wind Project**  
 Towns of Windsor and Sanford, Broome County, NY  
 Preliminary Scoping Statement  
 Figure 4. Sound Monitoring Locations

-  Sound Monitoring Location
-  Facility Area

Notes: 1. Basemap: "USGS TNM Topo Base Map" displayed via the USGS Topo Map Server.  
 2. This map was generated in ArcMap on August 2, 2017.  
 3. This is a color graphic. Reproduction in grayscale may misrepresent the data.

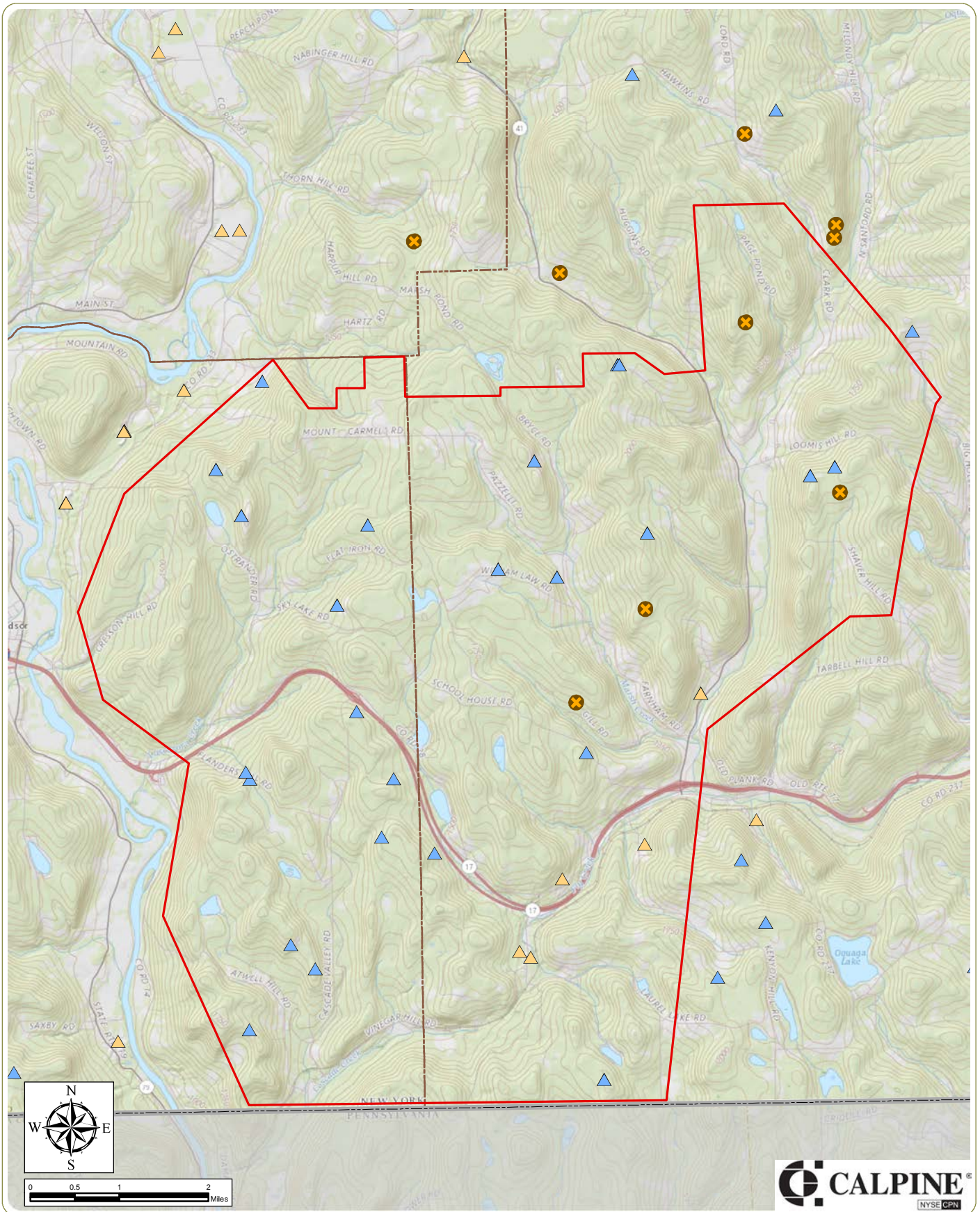


**Bluestone Wind Project**  
 Towns of Windsor and Sanford, Broome County, NY  
 Preliminary Scoping Statement  
 Figure 5. Mapped Cultural Resources

Notes: 1. Basemap: "USGS TNM Topo Base Map" displayed via the USGS Topo Map Server.  
 2. This map was generated in ArcMap on August 2, 2017.  
 3. This is a color graphic. Reproduction in grayscale may misrepresent the data.

- Previously Identified Historic Architectural Resource
- ⊕ NYSOPRHP Archaeological Site
- ★ NYSM Archaeological Site
- ▨ NYSM Archaeological Area
- ▨ NRHP-Listed Site
- Town Boundary
- ▭ Facility Area

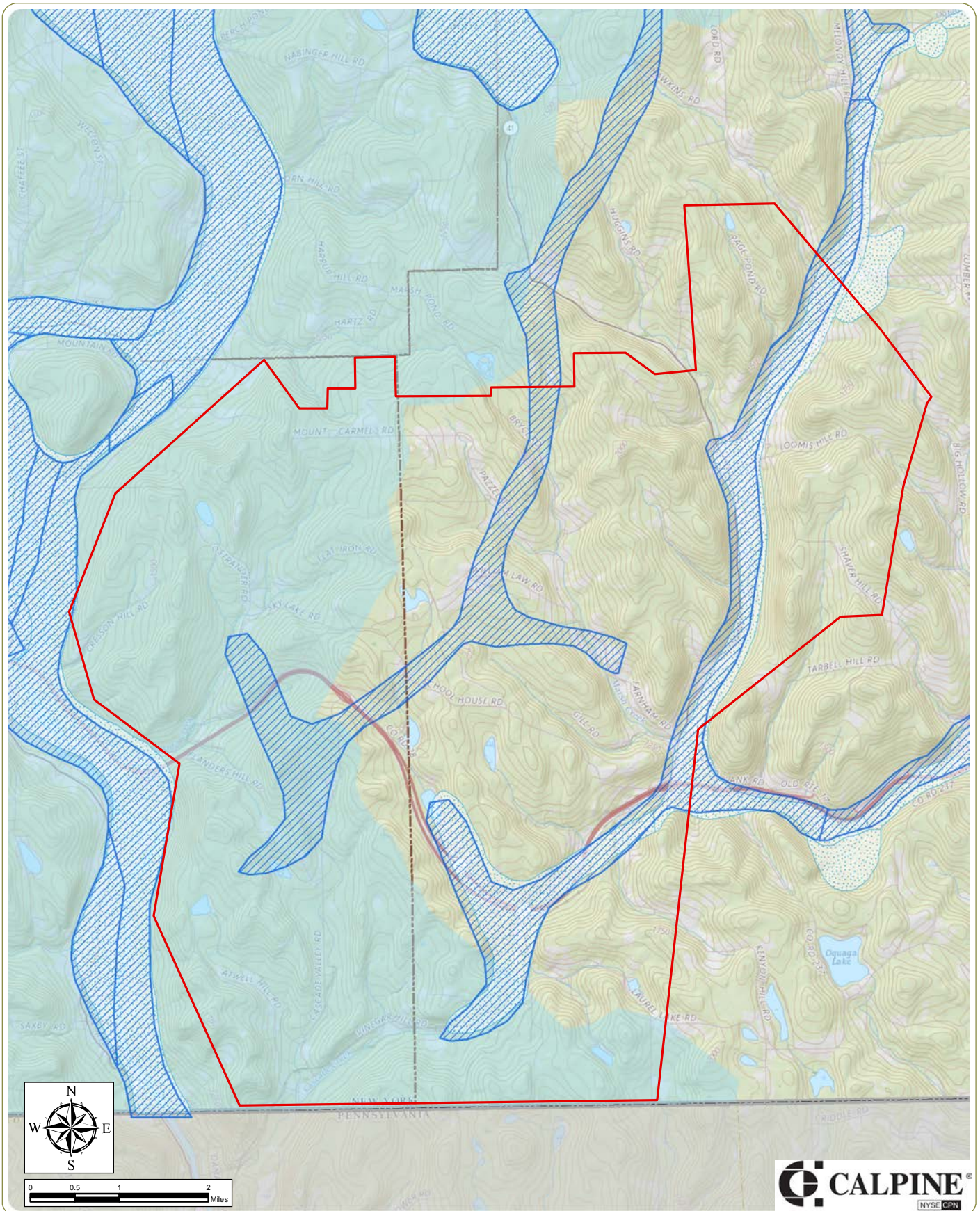




**Bluestone Wind Project**  
 Towns of Windsor and Sanford, Broome County, NY  
 Preliminary Scoping Statement  
 Figure 6: Mines and Oil and Gas Wells



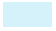

- ▲ Bluestone Mine
- ▲ Sand and Gravel Mine
- ⊗ Existing Oil or Gas Well
- Facility Area

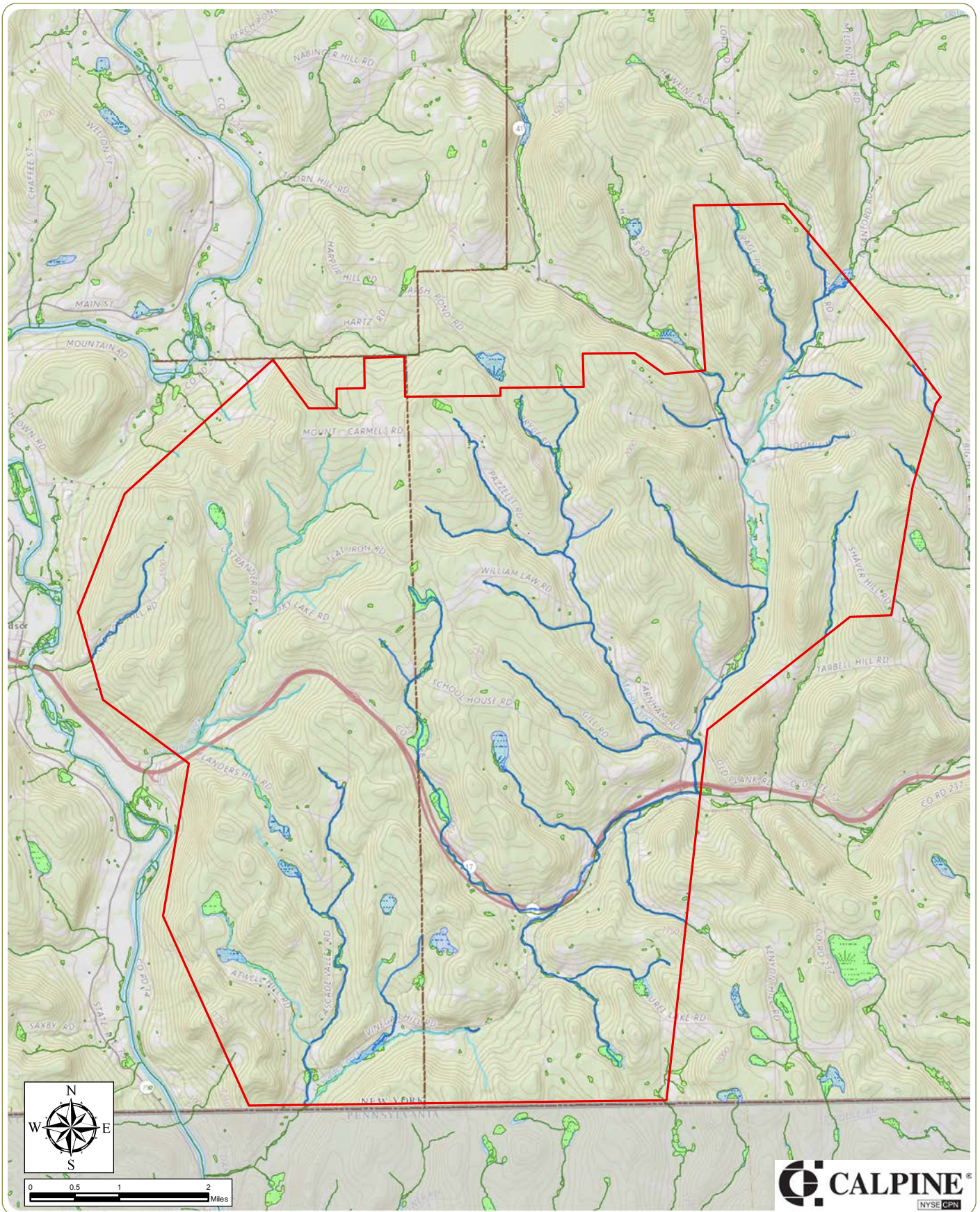
Notes: 1. Basemap: "USGS TNM Topo Base Map" displayed via the USGS Topo Map Server.  
 2. This map was generated in ArcMap on August 2, 2017.  
 3. This is a color graphic. Reproduction in grayscale may misrepresent the data.



**Bluestone Wind Project**  
 Towns of Windsor and Sanford, Broome County, NY  
**Preliminary Scoping Statement**  
 Figure 7. Groundwater Aquifers

Notes: 1. Basemap: "USGS TNM Topo Base Map" displayed via the USGS Topo Map Service.  
 2. This map was generated in ArcMap on August 2, 2017.  
 3. This is a color graphic. Reproduction in grayscale may misrepresent the data.

-  Surficial Aquifer
-  Unconsolidated Aquifer
-  Sole Source Aquifer
-  Facility Area

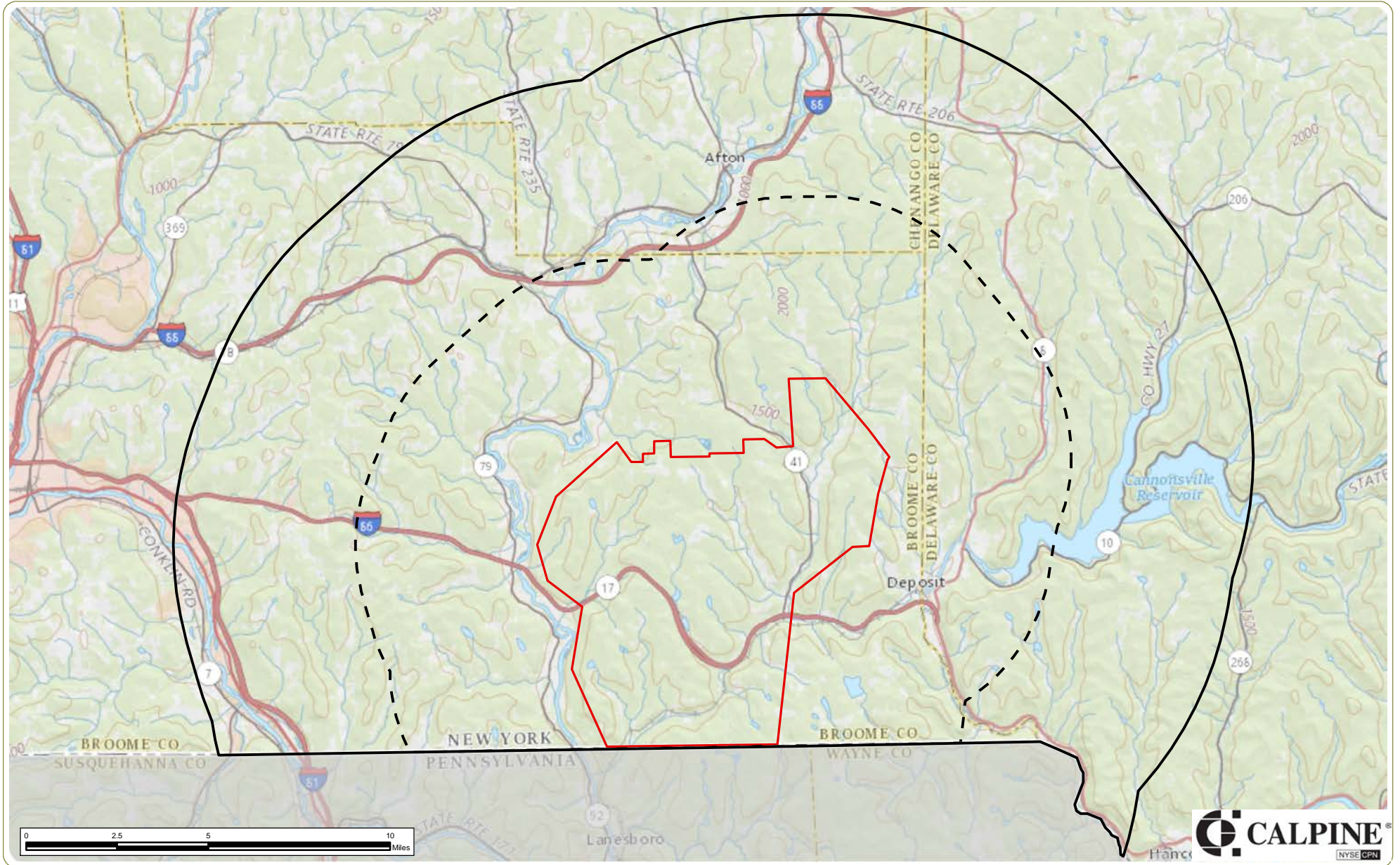


**Bluestone Wind Project**  
 Towns of Windsor and Sanford, Broome County, NY  
 Preliminary Scoping Statement  
 Figure 8. Mapped Wetlands & Streams

- NYSDEC Mapped Protected Stream
- - - NYSDEC Mapped Unprotected Stream
- NYSDEC Mapped Wetland
- NWI Mapped Wetland
- Facility Area




Notes: 1. Basemap: "USGS TNM Topo Base Map" displayed via the USGS Topo Map Server.  
 2. This map was generated in ArcMap on August 2, 2017.  
 3. This is a color graphic. Reproduction in grayscale may misrepresent the data.

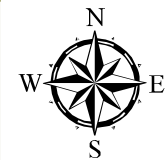




**Bluestone Wind Project**  
 Towns of Windsor and Sanford, Broome County, NY  
 Preliminary Scoping Statement  
 Figure 9. Preliminary Visual Study Area

- Notes: 1. Basemap: "USGS TNM Topo Base Map" displayed via the USGS Topo Map Server.
- 2. This map was generated in ArcMap on August 2, 2017.
- 3. This is a color graphic. Reproduction in grayscale may misrepresent the data.

-  Facility Area
-  5-Mile Study Area
-  10-Mile Study Area

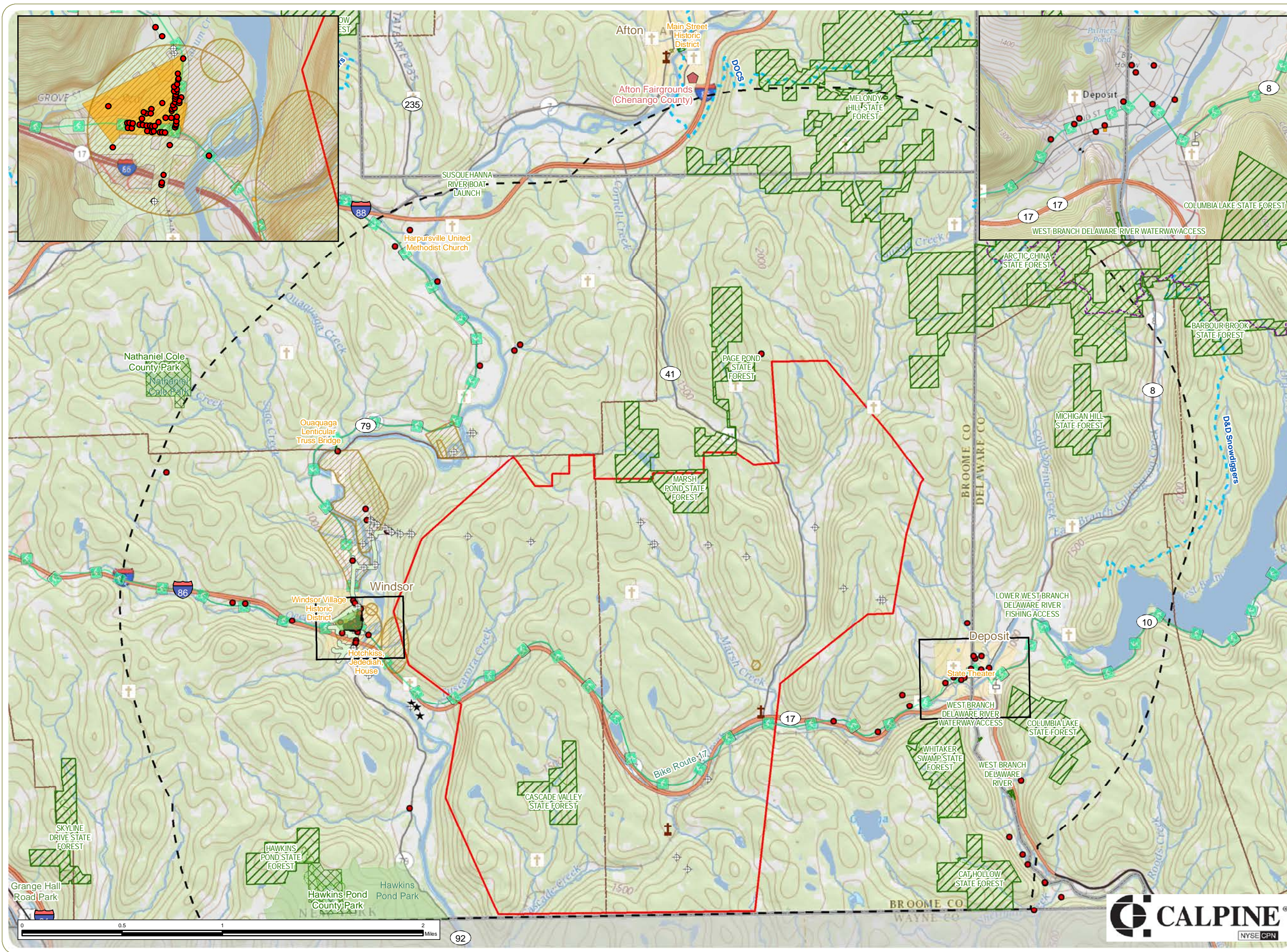


# Bluestone Wind Project

Towns of Windsor and Sanford  
Broome County, New York

Preliminary Scoping  
Statement

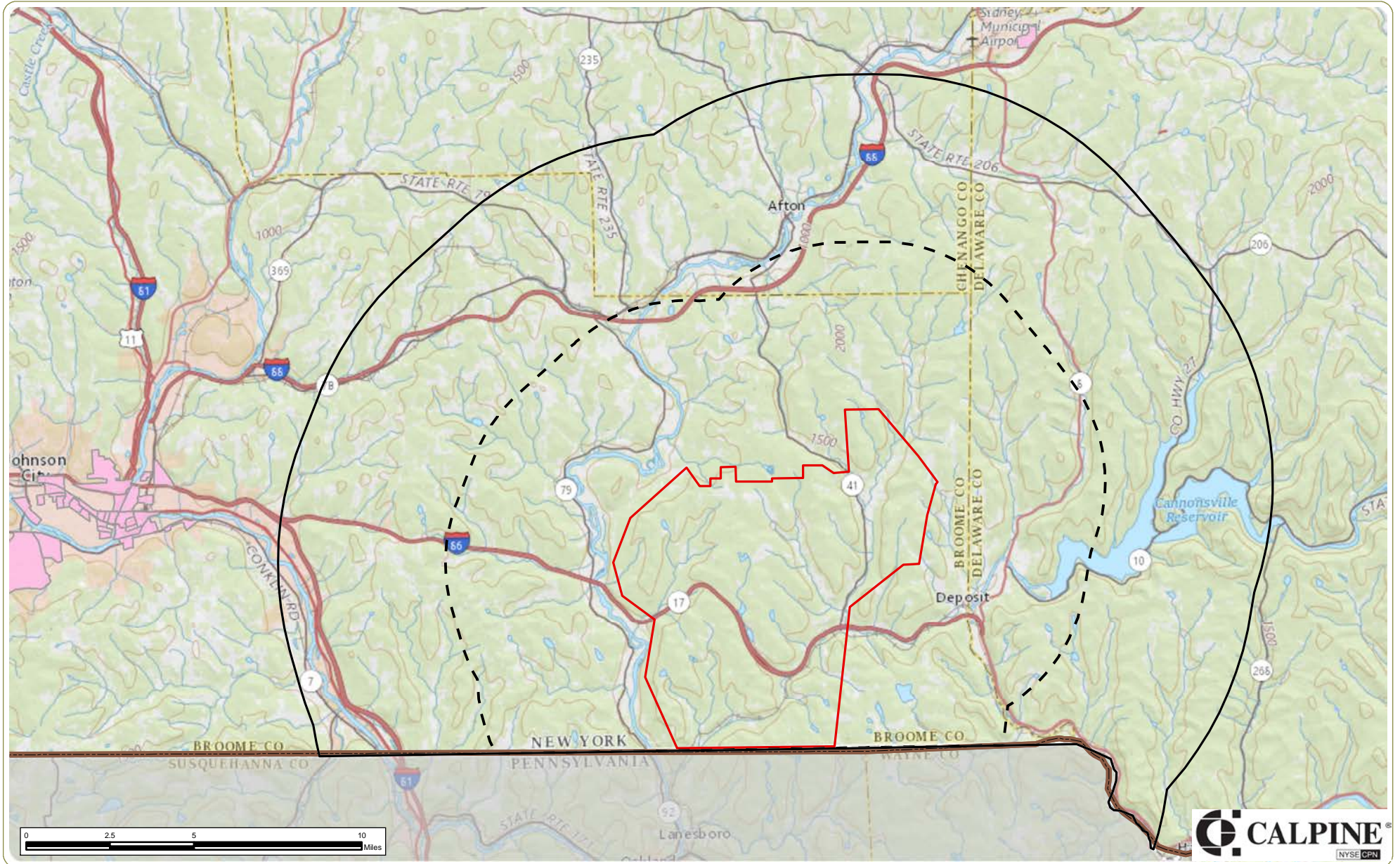
Figure 10. Preliminary  
Sensitive Site Resources



- School
- Church
- Cemetery
- Previously Identified Historic Architectural Resource
- NYSOPRHP Archaeological Site
- NYSM Archaeological Site
- Trail
- Snowmobile Trail
- Bike Route
- National Scenic Byway
- NRHP-Listed Site
- NYSM Archaeological Area
- Local Park
- NYSDEC Land
- National Wildlife Refuge
- Town Boundary
- County Boundary
- Facility Area
- 5-Mile Study Area

Notes:  
 1. Basemap: "USGS TNM Topo Base Map" displayed via the USGS Topo Map Server.  
 2. This map was generated in ArcMap on August 2, 2017.  
 3. This is a color graphic. Reproduction in grayscale may misrepresent the data.

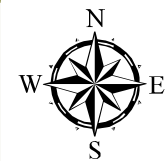
www.edrdpc.com



**Bluestone Wind Project**  
 Towns of Windsor and Sanford, Broome County, NY  
 Preliminary Scoping Statement  
 Figure 11. Environmental Justice Areas

- Notes: 1. Basemap: "USGS TNM Topo Base Map" displayed via the USGS Topo Map Server.  
 2. This map was generated in ArcMap on August 2, 2017.  
 3. This is a color graphic. Reproduction in grayscale may misrepresent the data.

- Environmental Justice Areas
- Facility Area
- 5-Mile Study Area
- 10-Mile Study Area



www.edrdpc.com

