


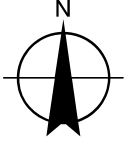


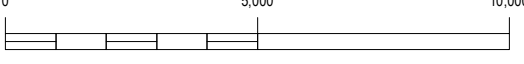
-  Turbine Location: Northland Power Grand Bend Project
-  Transformer Sub-Station | Switch Yard
-  Project Area

DATA SOURCES:
 1. Ministry of Natural Resources, © Queen's Printer for Ontario
 2. Natural Resources Canada © Her Majesty the Queen in Right of Canada

21 November 2012

N


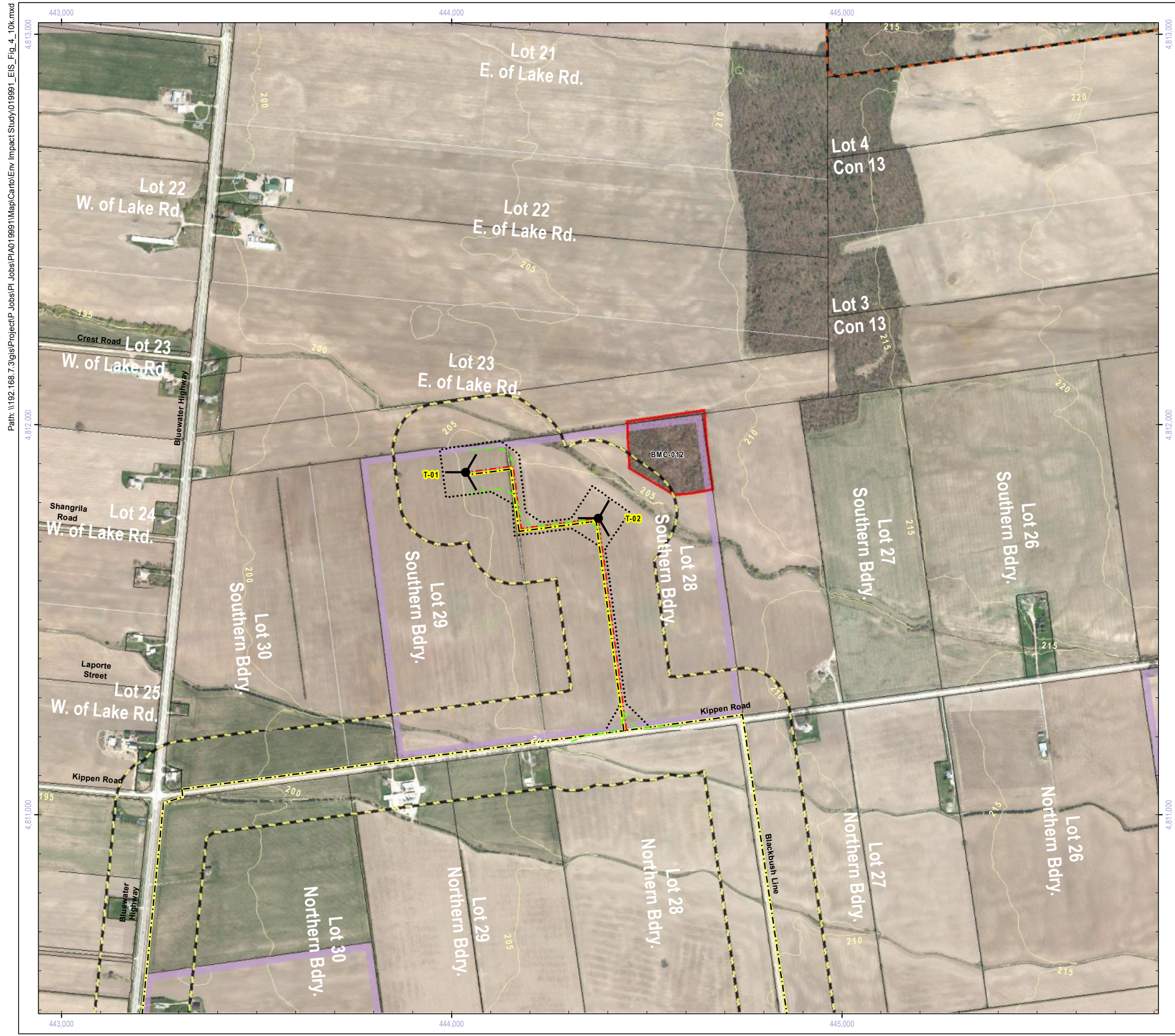
Projection: UTM Zone 17
Datum: NAD 83

0 5,000 10,000

 Meters



Title
 Grand Bend Wind Farm
 Grand Bend Wind Limited Partnership
 Environmental Impact Study
 Significant Wildlife Habitat

Prepared	P. Stubbert	Checked	T. Radburn	Figure Number
Scale	1:150,000	Project	PIA019991	4



Project Infrastructure

	Wind Turbine Location		Participating Property
	Access Road & Collector Line		Access Road
	Access Road: For Construction (Temporary)		Collector Line
	Transmission Line		Existing Transmission Line: Overhead
	Area of Construction		Building / Transformer Sub-Station / Switching Yard
			Contour (5m Interval)

Significant Wildlife Habitat

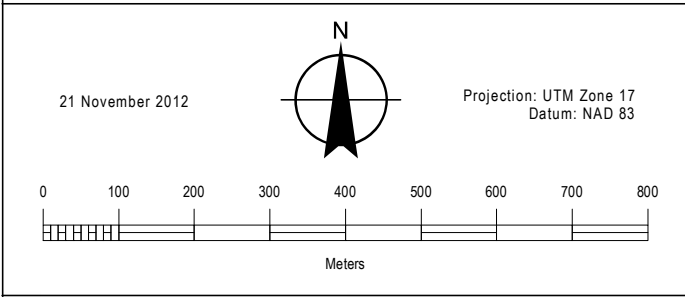
	Turtle Wintering Area		120m From Project Location
	Turtle Nesting Area		Study Area
	Deer Wintering Yard		Ecoregion 6E - 7E Division
	Amphibian Breeding Habitat		
	Bat Maternal Colonies		
	Species of Conservation Concern		

NOTES:

- Reference the Figure 1 Key Map for location in the overall project area.

DATA SOURCES:

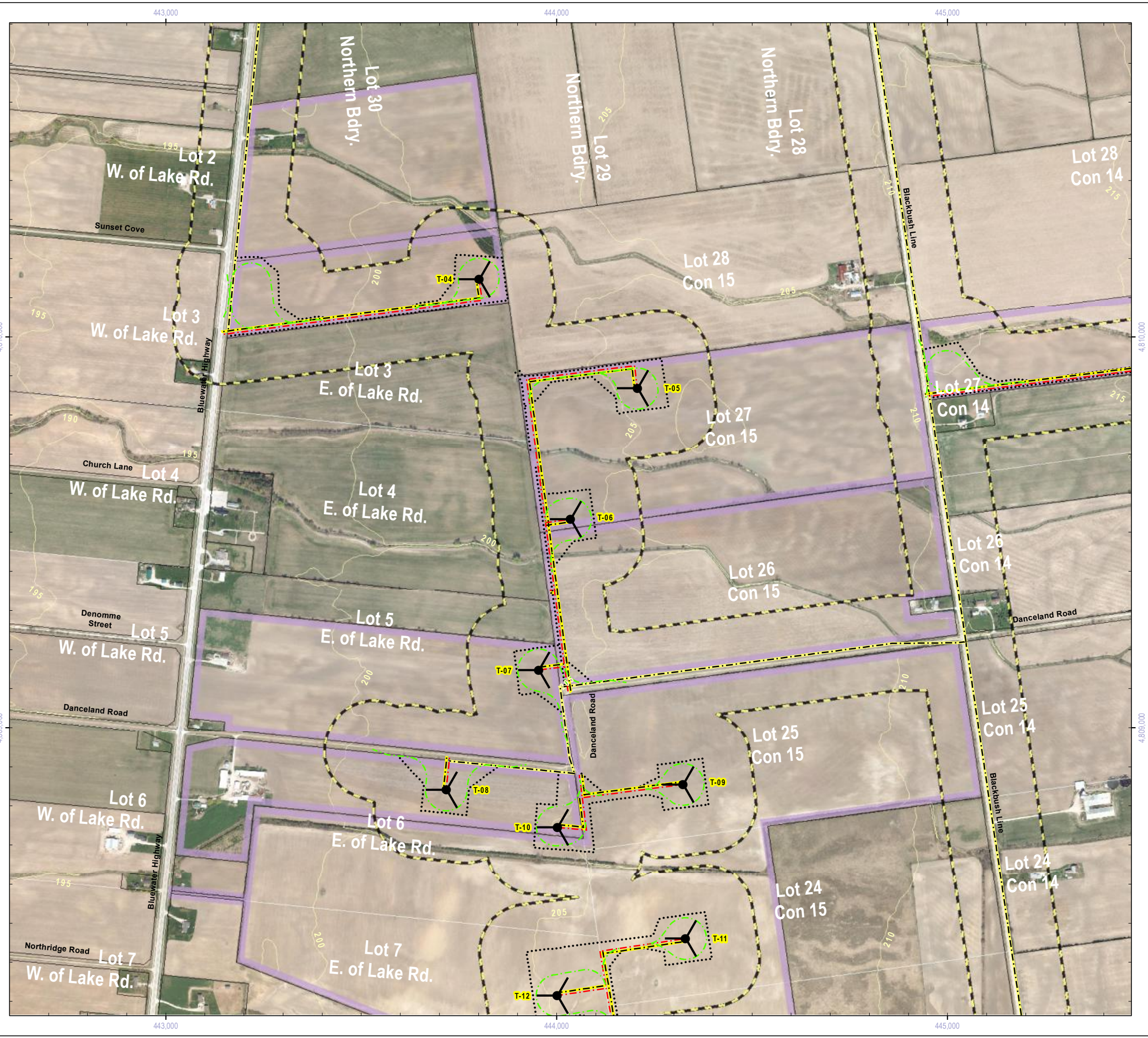
- County of Huron (including Imagery: 2010)
- Ministry of Natural Resources, © Queen's Printer for Ontario
- Natural Resources Canada © Her Majesty the Queen in Right of Canada



Title

**Grand Bend Wind Farm
Grand Bend Wind Limited Partnership
Environmental Impact Study
Significant Wildlife Habitat**

Prepared	P. Stubbert	Checked	T. Radburn	Figure Number	4a
Scale	1:10,000	Project	PIA019991		



Project Infrastructure

	Wind Turbine Location		Participating Property
	Access Road & Collector Line		Access Road
	Access Road: For Construction (Temporary)		Collector Line
	Transmission Line		Existing Transmission Line: Overhead
	Area of Construction		Building / Transformer Sub-Station / Switching Yard
			Contour (5m Interval)

Significant Wildlife Habitat

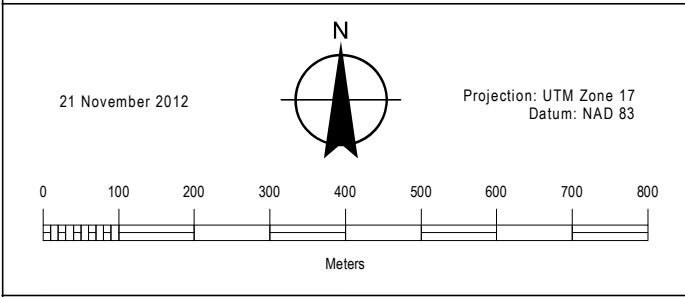
	Turtle Wintering Area		120m From Project Location
	Turtle Nesting Area		Study Area
	Deer Wintering Yard		Ecoregion 6E - 7E Division
	Amphibian Breeding Habitat		
	Bat Maternal Colonies		
	Species of Conservation Concern		

NOTES:

- Reference the Figure 1 Key Map for location in the overall project area.

DATA SOURCES:

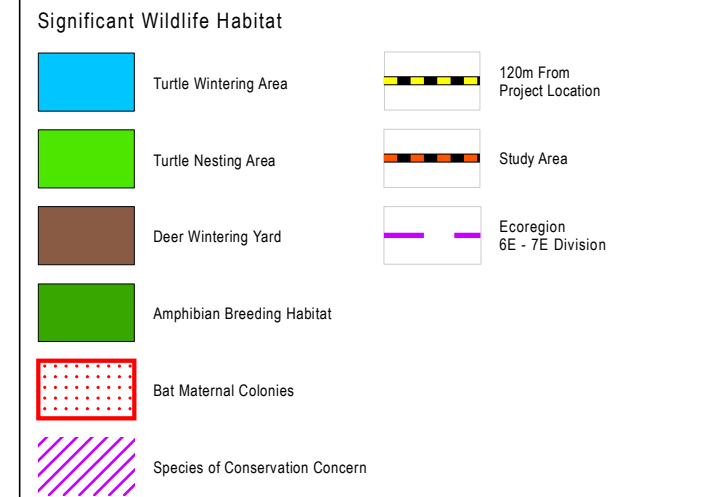
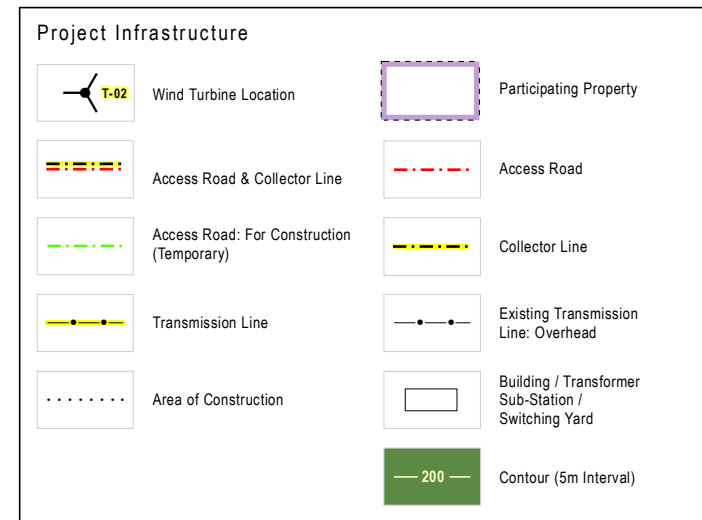
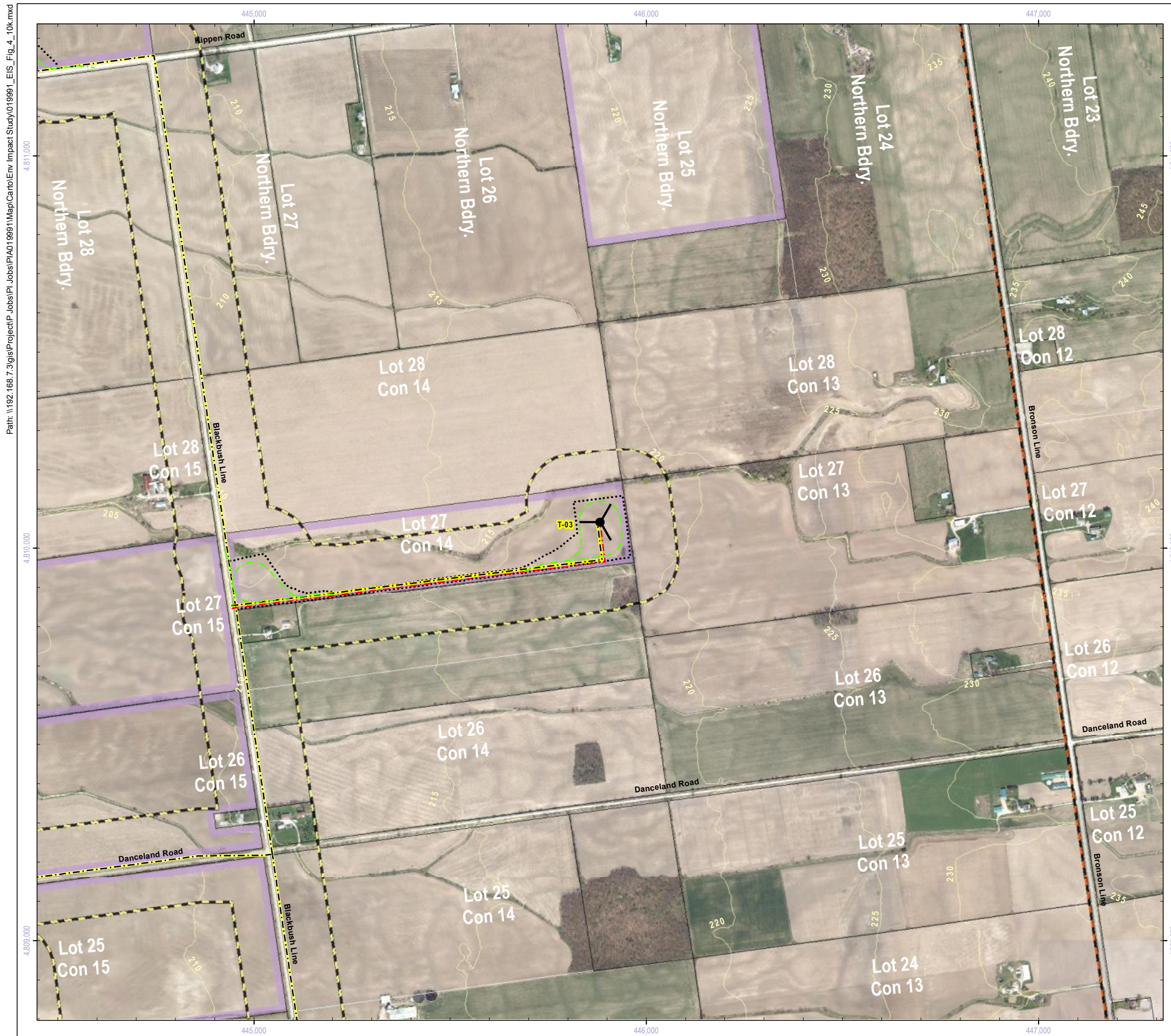
- County of Huron (including Imagery: 2010)
- Ministry of Natural Resources, © Queen's Printer for Ontario
- Natural Resources Canada © Her Majesty the Queen in Right of Canada



Title

**Grand Bend Wind Farm
Grand Bend Wind Limited Partnership
Environmental Impact Study
Significant Wildlife Habitat**

Prepared	P. Stubbert	Checked	T. Radburn	Figure Number	4b
Scale	1:10,000	Project	PIA019991		

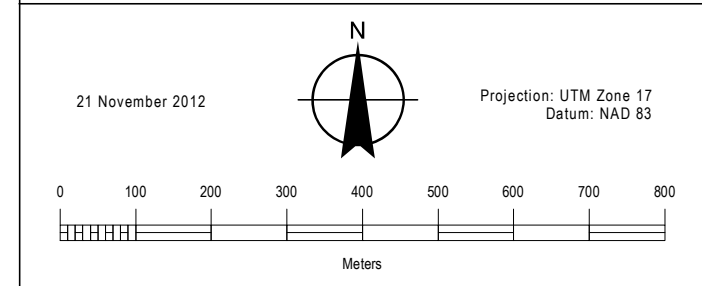


NOTES:

- Reference the Figure 1 Key Map for location in the overall project area.

DATA SOURCES:

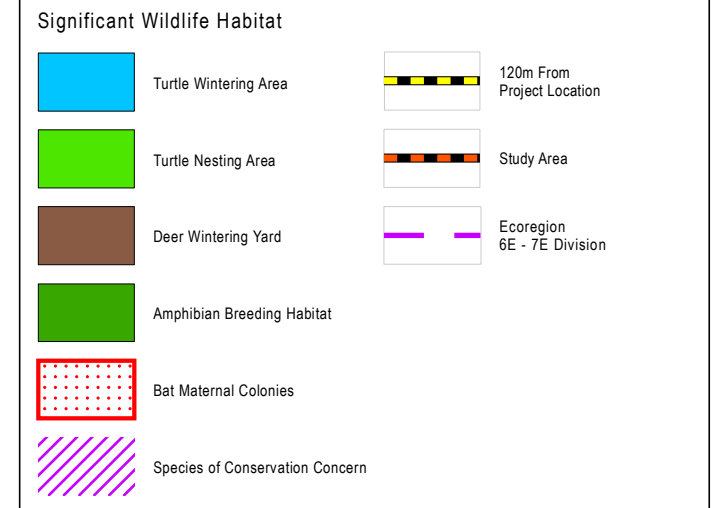
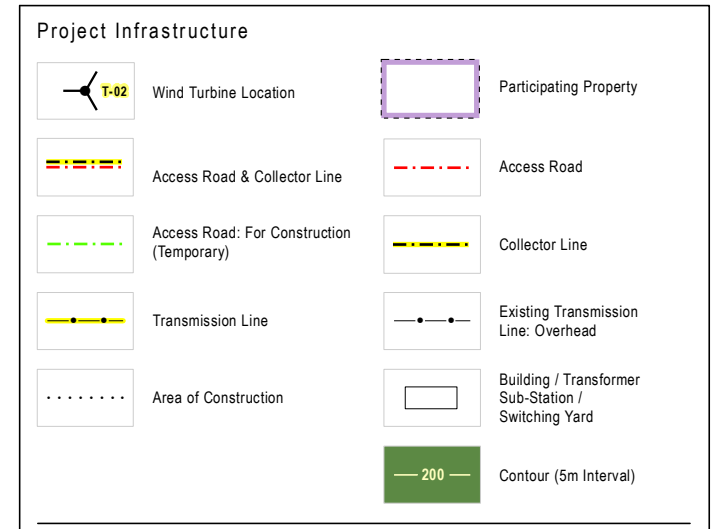
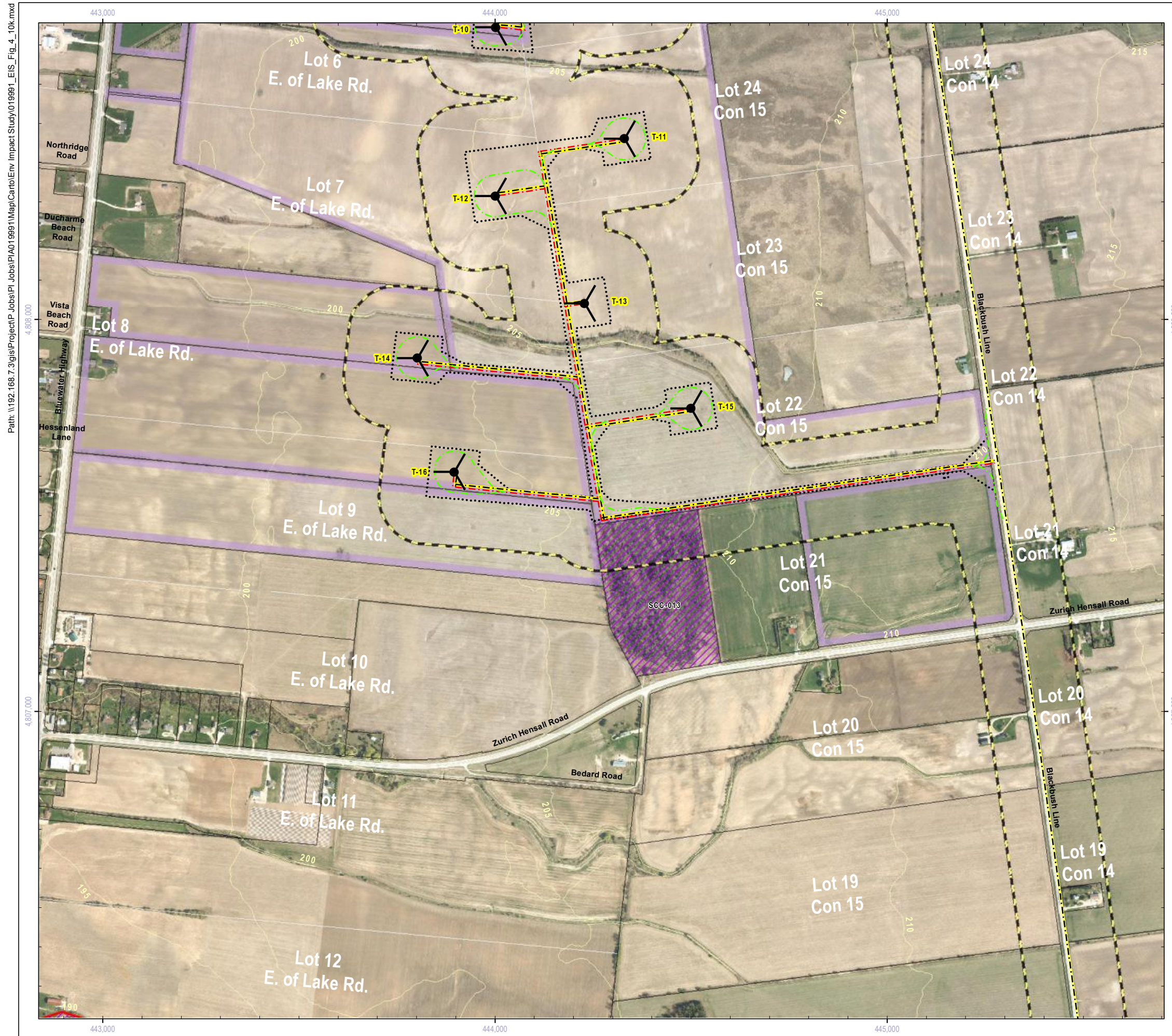
- County of Huron (including Imagery: 2010)
- Ministry of Natural Resources, © Queen's Printer for Ontario
- Natural Resources Canada © Her Majesty the Queen in Right of Canada



Title

**Grand Bend Wind Farm
Grand Bend Wind Limited Partnership
Environmental Impact Study
Significant Wildlife Habitat**

Prepared	P. Stubbert	Checked	T. Radburn	Figure Number	4c
Scale	1:10,000	Project	PIA019991		

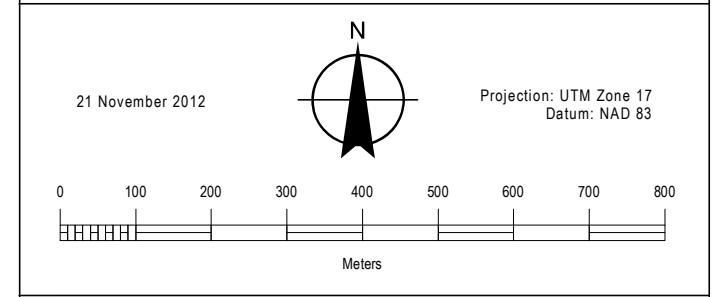


NOTES:

- Reference the Figure 1 Key Map for location in the overall project area.

DATA SOURCES:

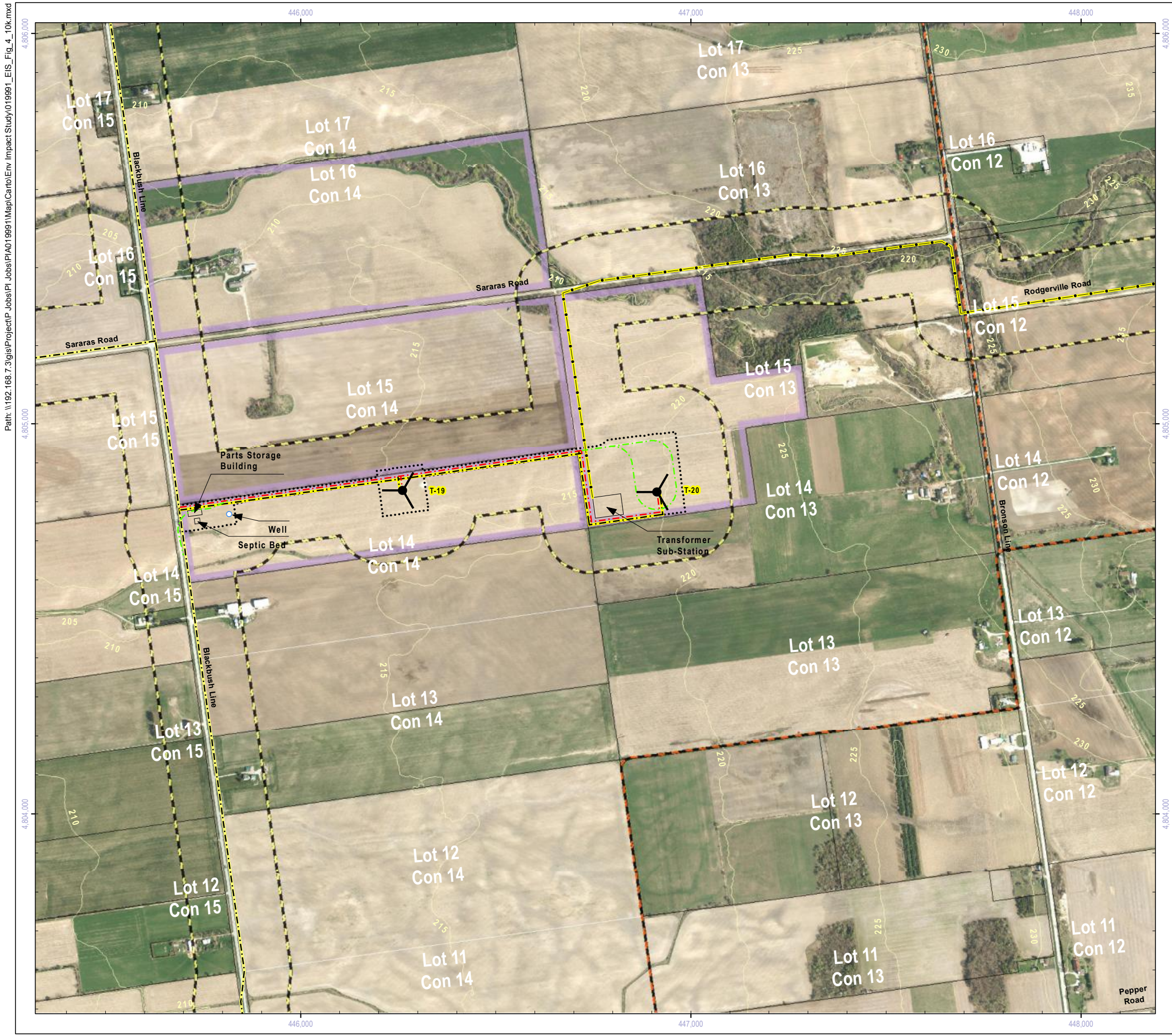
- County of Huron (including Imagery: 2010)
- Ministry of Natural Resources, © Queen's Printer for Ontario
- Natural Resources Canada © Her Majesty the Queen in Right of Canada



Title

**Grand Bend Wind Farm
Grand Bend Wind Limited Partnership
Environmental Impact Study
Significant Wildlife Habitat**

Prepared	P. Stubbert	Checked	T. Radburn	Figure Number	4d
Scale	1:10,000	Project	PIA019991		



Project Infrastructure

	Wind Turbine Location		Participating Property
	Access Road & Collector Line		Access Road
	Access Road: For Construction (Temporary)		Collector Line
	Transmission Line		Existing Transmission Line: Overhead
	Area of Construction		Building / Transformer Sub-Station / Switching Yard
			Contour (5m Interval)

Significant Wildlife Habitat

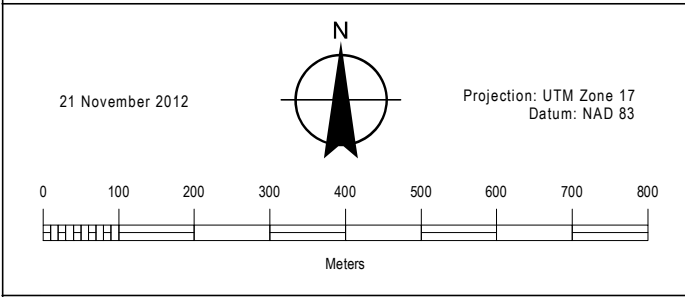
	Turtle Wintering Area		120m From Project Location
	Turtle Nesting Area		Study Area
	Deer Wintering Yard		Ecoregion 6E - 7E Division
	Amphibian Breeding Habitat		
	Bat Maternal Colonies		
	Species of Conservation Concern		

NOTES:

- Reference the Figure 1 Key Map for location in the overall project area.

DATA SOURCES:

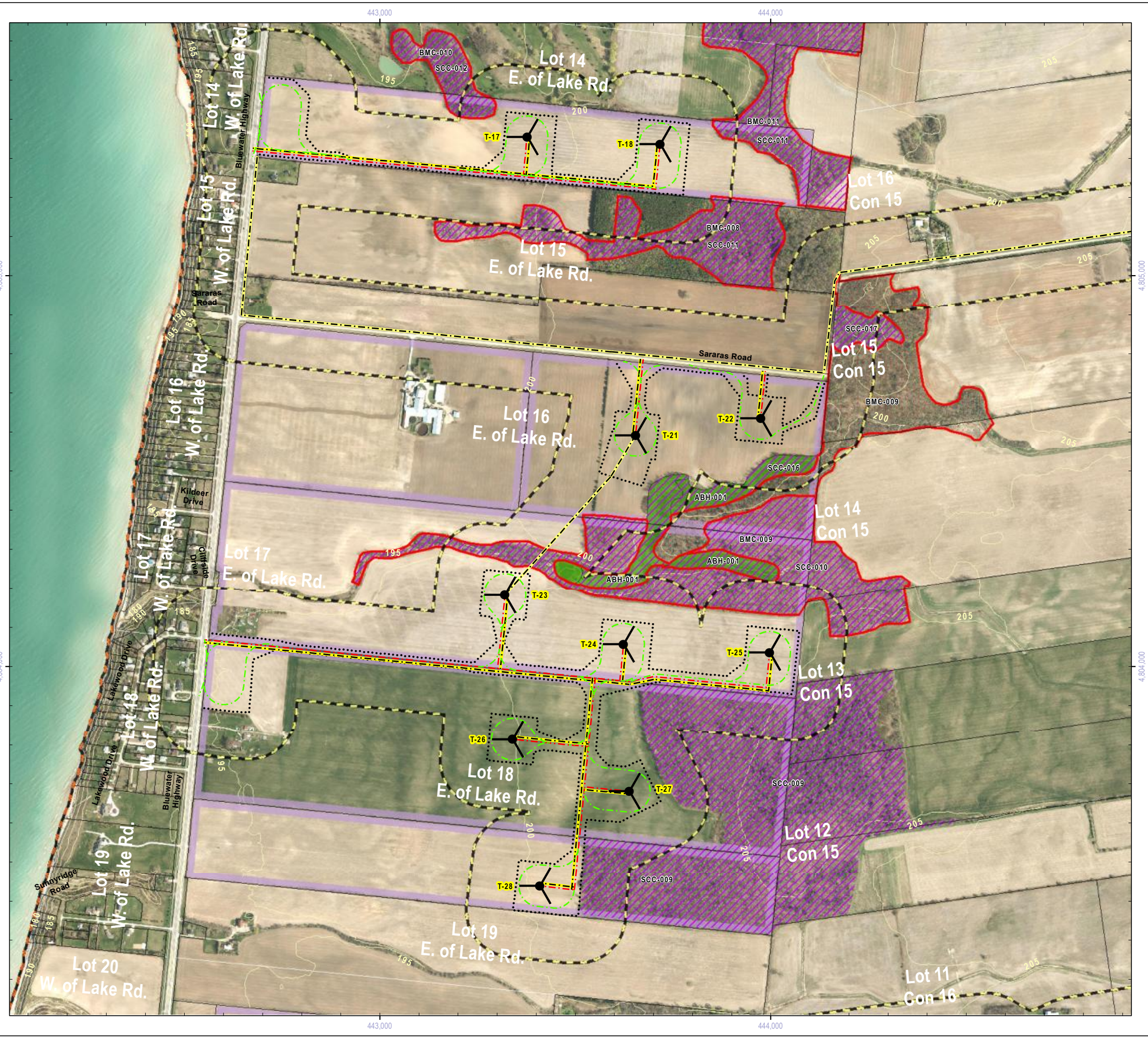
- County of Huron (including Imagery: 2010)
- Ministry of Natural Resources, © Queen's Printer for Ontario
- Natural Resources Canada © Her Majesty the Queen in Right of Canada



Title

**Grand Bend Wind Farm
Grand Bend Wind Limited Partnership
Environmental Impact Study
Significant Wildlife Habitat**

Prepared	P. Stubbert	Checked	T. Radburn	Figure Number	4e
Scale	1:10,000	Project	PIA019991		



Project Infrastructure

	Wind Turbine Location		Participating Property
	Access Road & Collector Line		Access Road
	Access Road: For Construction (Temporary)		Collector Line
	Transmission Line		Existing Transmission Line: Overhead
	Area of Construction		Building / Transformer Sub-Station / Switching Yard
			Contour (5m Interval)

Significant Wildlife Habitat

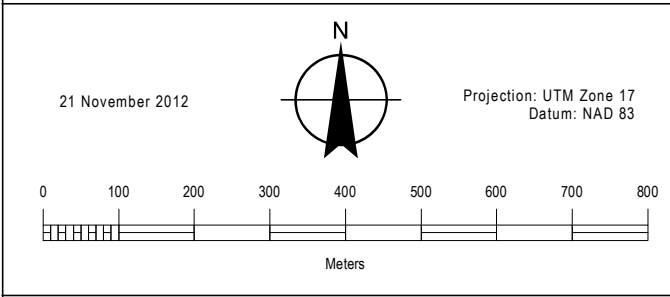
	Turtle Wintering Area		120m From Project Location
	Turtle Nesting Area		Study Area
	Deer Wintering Yard		Ecoregion 6E - 7E Division
	Amphibian Breeding Habitat		
	Bat Maternal Colonies		
	Species of Conservation Concern		

NOTES:

- Reference the Figure 1 Key Map for location in the overall project area.

DATA SOURCES:

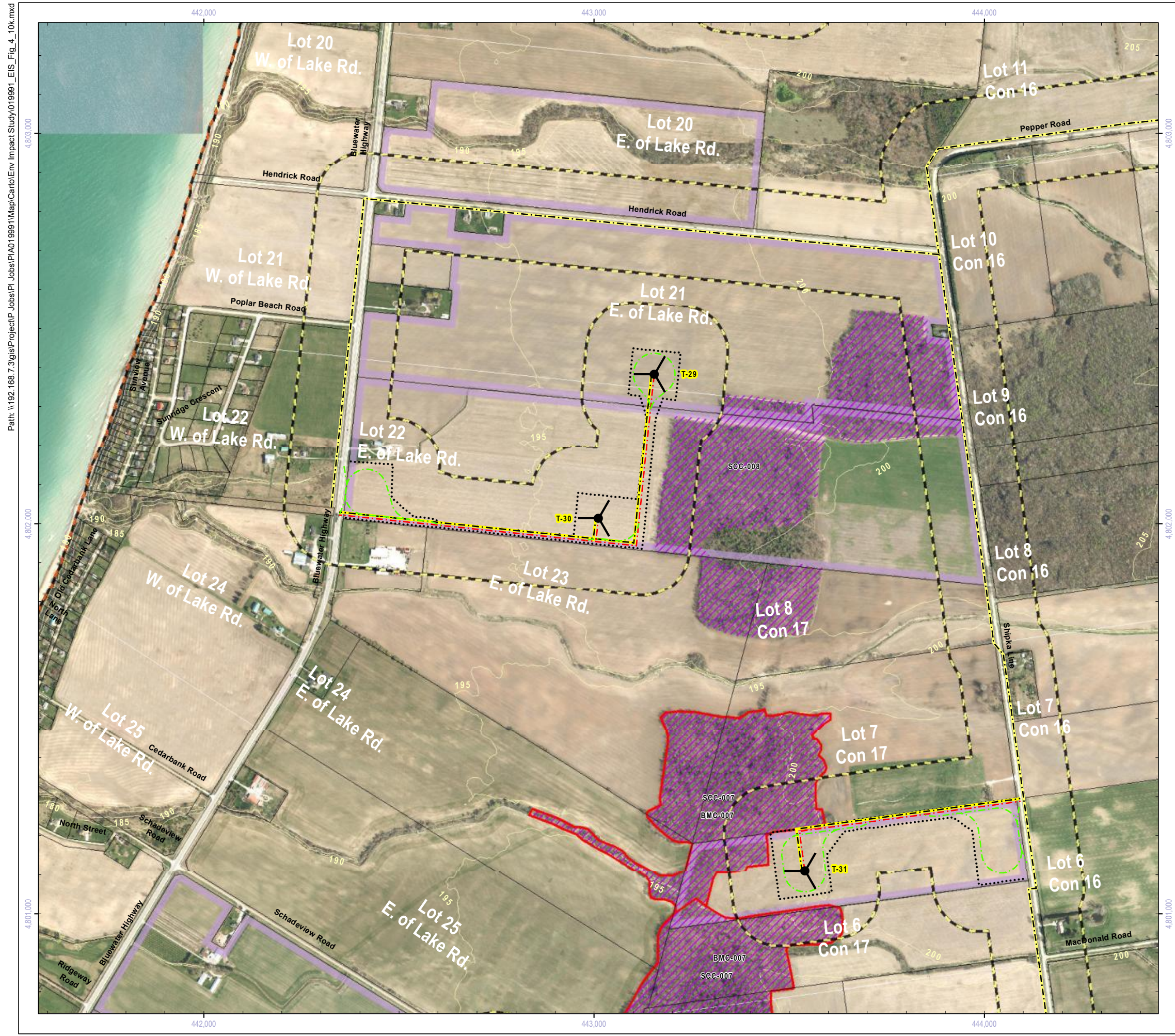
- County of Huron (including Imagery: 2010)
- Ministry of Natural Resources, © Queen's Printer for Ontario
- Natural Resources Canada © Her Majesty the Queen in Right of Canada



Title

**Grand Bend Wind Farm
Grand Bend Wind Limited Partnership
Environmental Impact Study
Significant Wildlife Habitat**

Prepared	P. Stubbert	Checked	T. Radburn	Figure Number	4f
Scale	1:10,000	Project	PIA019991		



Project Infrastructure

	Wind Turbine Location		Participating Property
	Access Road & Collector Line		Access Road
	Access Road: For Construction (Temporary)		Collector Line
	Transmission Line		Existing Transmission Line: Overhead
	Area of Construction		Building / Transformer Sub-Station / Switching Yard
			Contour (5m Interval)

Significant Wildlife Habitat

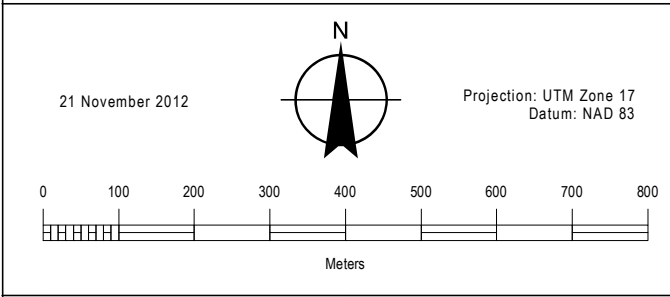
	Turtle Wintering Area		120m From Project Location
	Turtle Nesting Area		Study Area
	Deer Wintering Yard		Ecoregion 6E - 7E Division
	Amphibian Breeding Habitat		
	Bat Maternal Colonies		
	Species of Conservation Concern		

NOTES:

- Reference the Figure 1 Key Map for location in the overall project area.

DATA SOURCES:

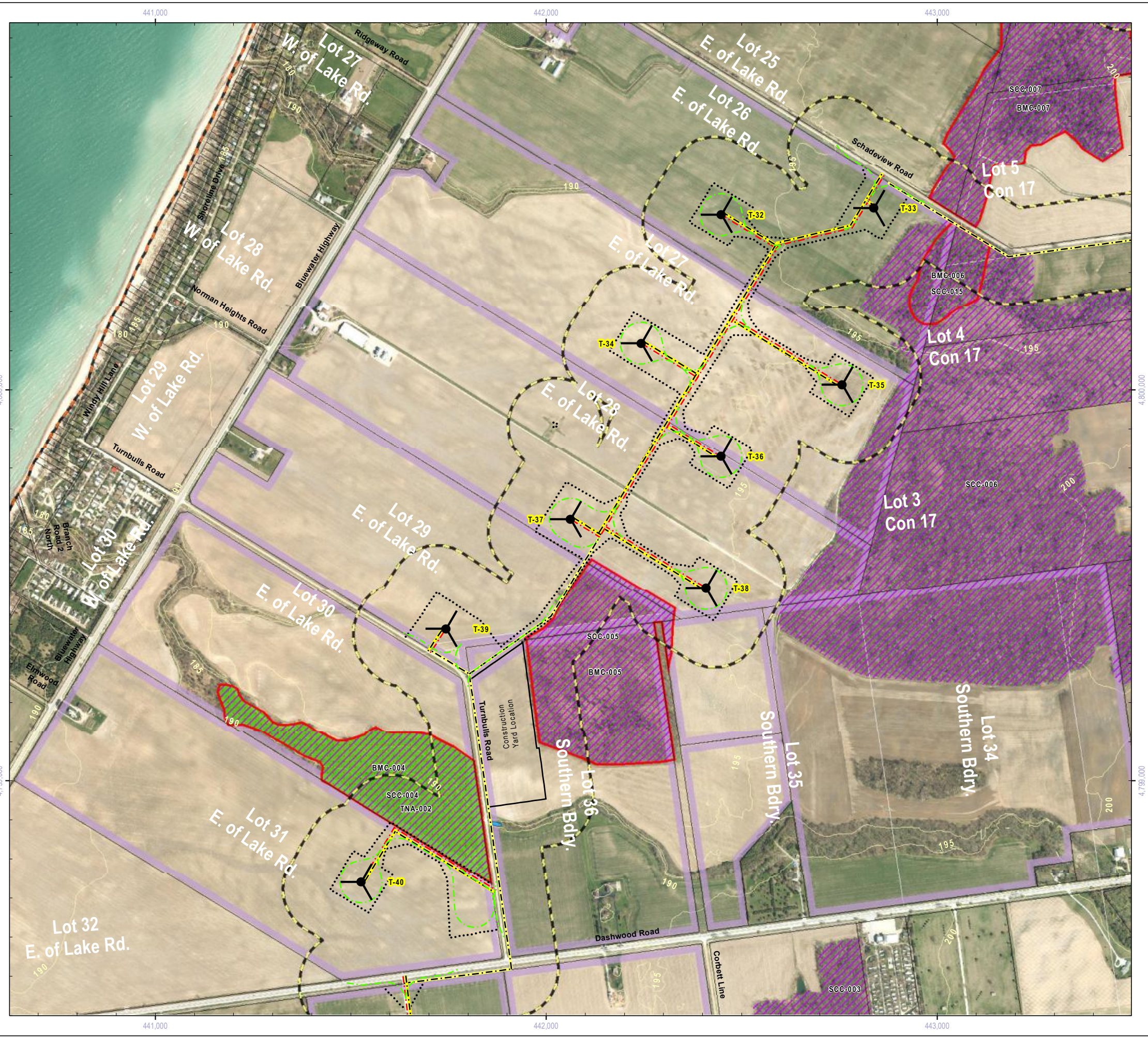
- County of Huron (including Imagery: 2010)
- Ministry of Natural Resources, © Queen's Printer for Ontario
- Natural Resources Canada © Her Majesty the Queen in Right of Canada



Title

**Grand Bend Wind Farm
Grand Bend Wind Limited Partnership
Environmental Impact Study
Significant Wildlife Habitat**

Prepared	P. Stubbert	Checked	T. Radburn	Figure Number	4g
Scale	1:10,000	Project	PIA019991		



Project Infrastructure

	Wind Turbine Location		Participating Property
	Access Road & Collector Line		Access Road
	Access Road: For Construction (Temporary)		Collector Line
	Transmission Line		Existing Transmission Line: Overhead
	Area of Construction		Building / Transformer Sub-Station / Switching Yard
			Contour (5m Interval)

Significant Wildlife Habitat

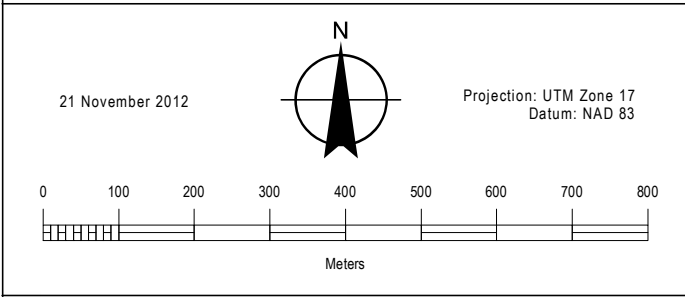
	Turtle Wintering Area		120m From Project Location
	Turtle Nesting Area		Study Area
	Deer Wintering Yard		Ecoregion 6E - 7E Division
	Amphibian Breeding Habitat		
	Bat Maternal Colonies		
	Species of Conservation Concern		

NOTES:

- Reference the Figure 1 Key Map for location in the overall project area.

DATA SOURCES:

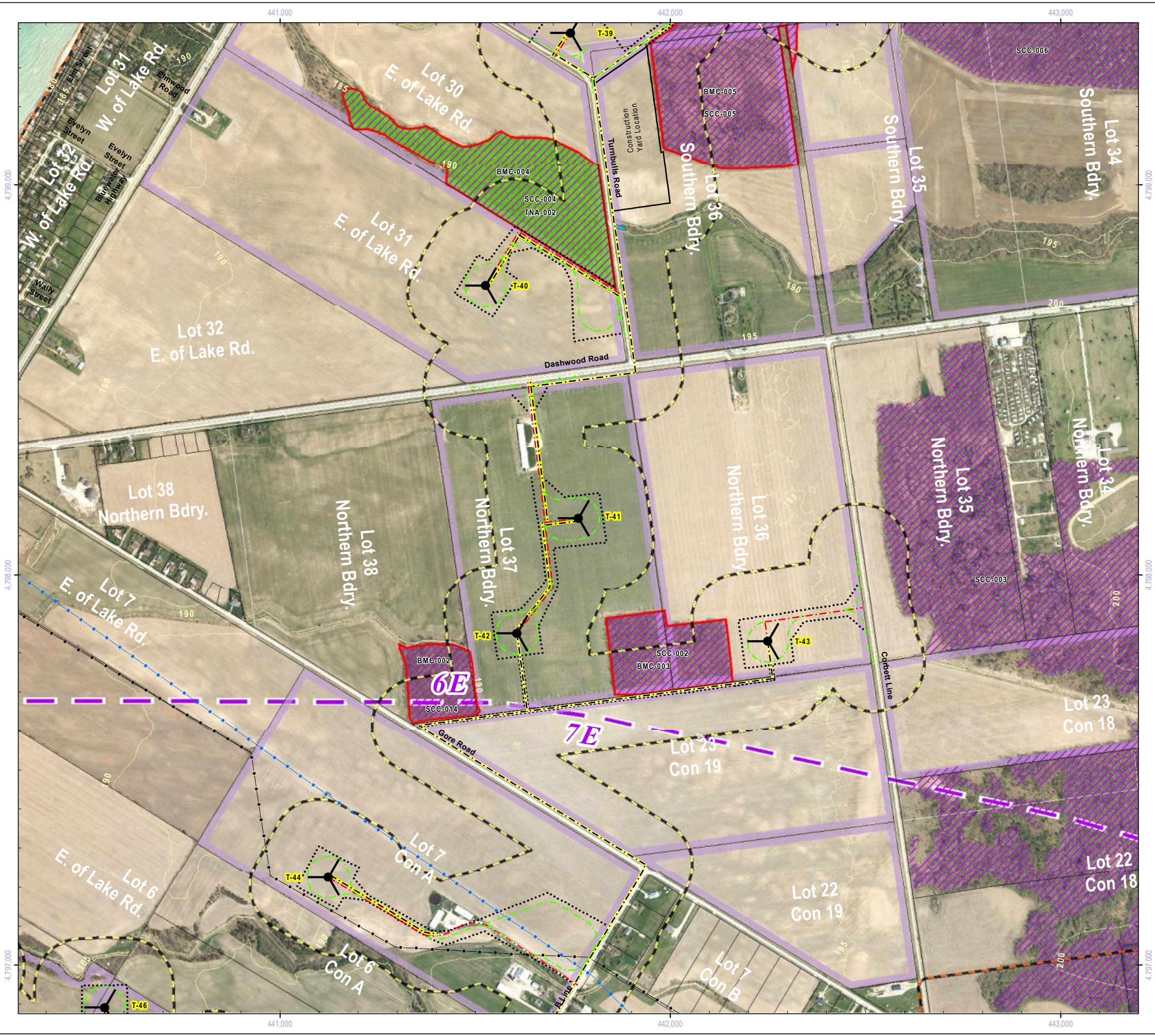
- County of Huron (including Imagery: 2010)
- Ministry of Natural Resources, © Queen's Printer for Ontario
- Natural Resources Canada © Her Majesty the Queen in Right of Canada



Title

**Grand Bend Wind Farm
Grand Bend Wind Limited Partnership
Environmental Impact Study
Significant Wildlife Habitat**

Prepared	P. Stubbert	Checked	T. Radburn	Figure Number	4h
Scale	1:10,000	Project	PIA019991		



Project Infrastructure

	Wind Turbine Location		Participating Property
	Access Road & Collector Line		Access Road
	Access Road: For Construction (Temporary)		Collector Line
	Transmission Line		Existing Transmission Line: Overhead
	Area of Construction		Building / Transformer Sub-Station / Switching Yard
			Contour (5m Interval)

Significant Wildlife Habitat

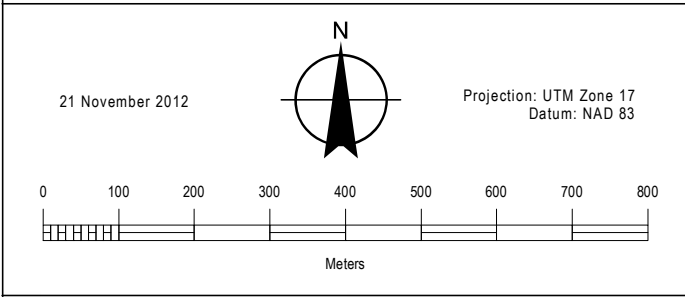
	Turtle Wintering Area		120m From Project Location
	Turtle Nesting Area		Study Area
	Deer Wintering Yard		Ecoregion 6E - 7E Division
	Amphibian Breeding Habitat		
	Bat Maternal Colonies		
	Species of Conservation Concern		

NOTES:

- Reference the Figure 1 Key Map for location in the overall project area.

DATA SOURCES:

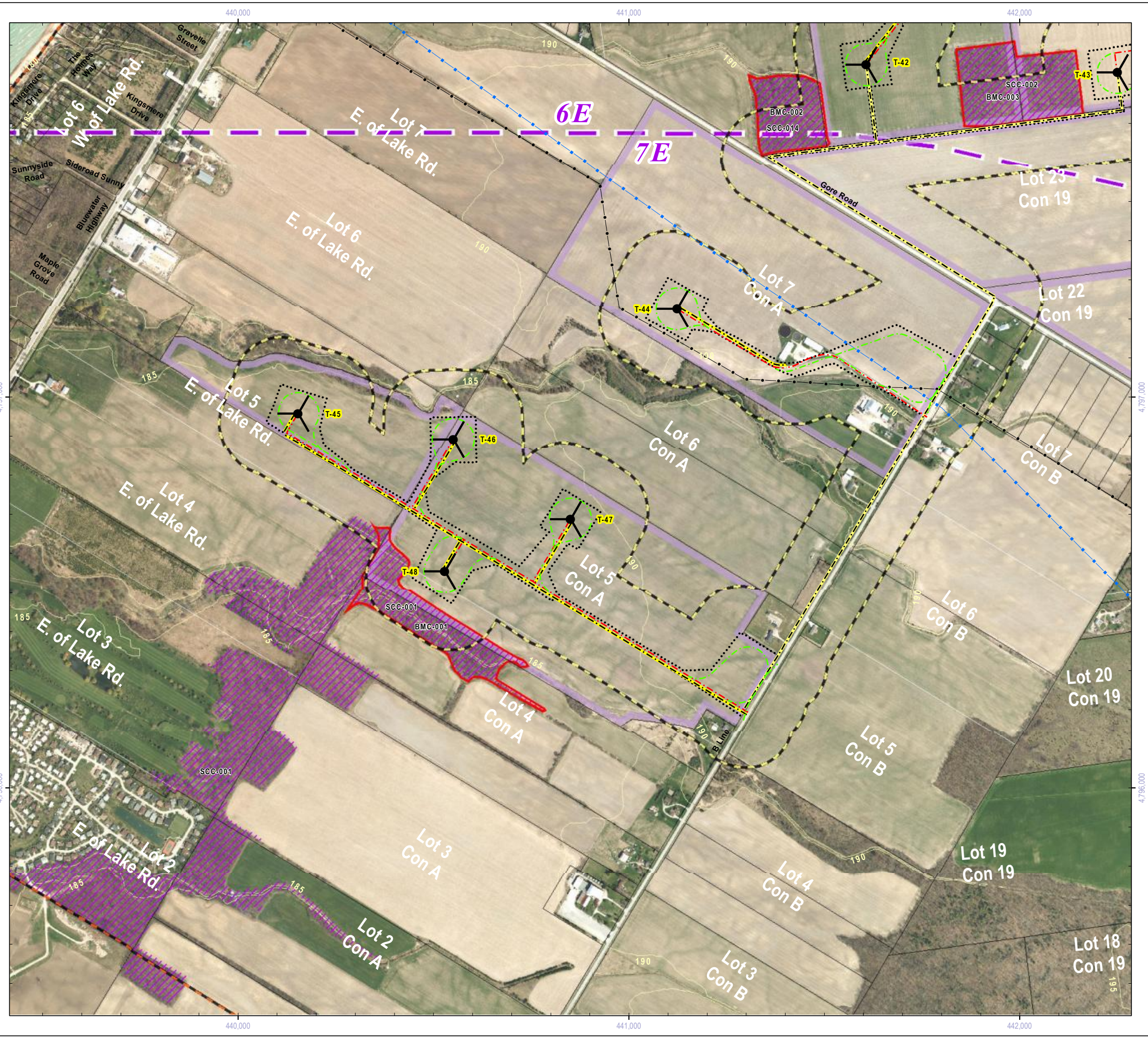
- County of Huron (including Imagery: 2010)
- Ministry of Natural Resources, © Queen's Printer for Ontario
- Natural Resources Canada © Her Majesty the Queen in Right of Canada



Title

**Grand Bend Wind Farm
Grand Bend Wind Limited Partnership
Environmental Impact Study
Significant Wildlife Habitat**

Prepared	P. Stubbert	Checked	T. Radburn	Figure Number	4i
Scale	1:10,000	Project	PIA019991		



Project Infrastructure

	Wind Turbine Location		Participating Property
	Access Road & Collector Line		Access Road
	Access Road: For Construction (Temporary)		Collector Line
	Transmission Line		Existing Transmission Line: Overhead
	Area of Construction		Building / Transformer Sub-Station / Switching Yard
			Contour (5m Interval)

Significant Wildlife Habitat

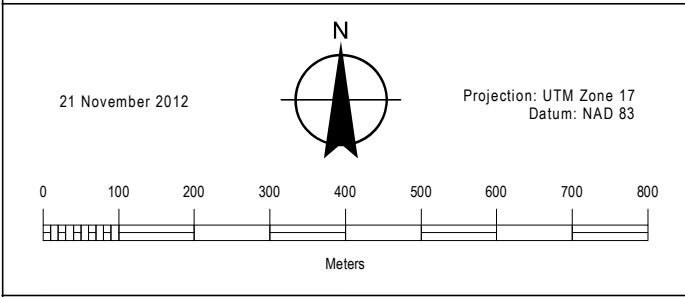
	Turtle Wintering Area		120m From Project Location
	Turtle Nesting Area		Study Area
	Deer Wintering Yard		Ecoregion 6E - 7E Division
	Amphibian Breeding Habitat		
	Bat Maternal Colonies		
	Species of Conservation Concern		

NOTES:

- Reference the Figure 1 Key Map for location in the overall project area.

DATA SOURCES:

- County of Huron (including Imagery: 2010)
- Ministry of Natural Resources, © Queen's Printer for Ontario
- Natural Resources Canada © Her Majesty the Queen in Right of Canada



Title

**Grand Bend Wind Farm
Grand Bend Wind Limited Partnership
Environmental Impact Study
Significant Wildlife Habitat**

Prepared	P. Stubbert	Checked	T. Radburn	Figure Number	4j
Scale	1:10,000	Project	PIA019991		



Project Infrastructure

	Wind Turbine Location		Participating Property
	Access Road & Collector Line		Access Road
	Access Road: For Construction (Temporary)		Collector Line
	Transmission Line		Existing Transmission Line: Overhead
	Area of Construction		Building / Transformer Sub-Station / Switching Yard
			Contour (5m Interval)

Significant Wildlife Habitat

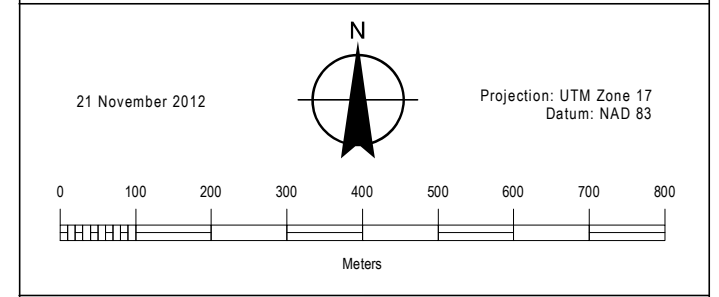
	Turtle Wintering Area		120m From Project Location
	Turtle Nesting Area		Study Area
	Deer Wintering Yard		Ecoregion 6E - 7E Division
	Amphibian Breeding Habitat		
	Bat Maternal Colonies		
	Species of Conservation Concern		

NOTES:

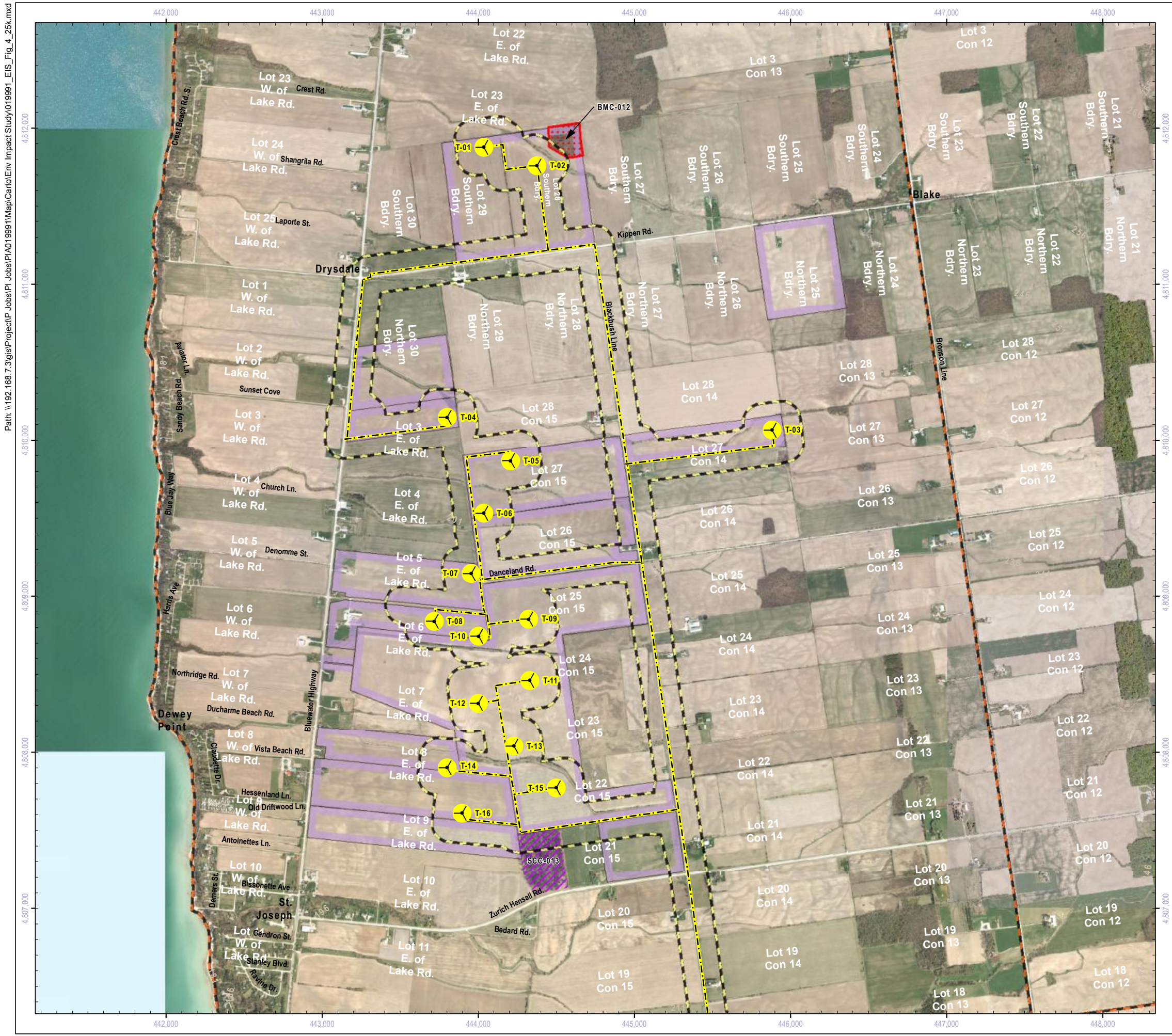
- Reference the Figure 1 Key Map for location in the overall project area.

DATA SOURCES:





- County of Huron (including Imagery: 2010)
- Ministry of Natural Resources, © Queen's Printer for Ontario
- Natural Resources Canada © Her Majesty the Queen in Right of Canada



Title			
Grand Bend Wind Farm Grand Bend Wind Limited Partnership Environmental Impact Study Significant Wildlife Habitat			
Prepared	P. Stubbert	Checked	T. Radburn
Scale	1:10,000	Project	PIA019991
Figure Number			4k



Project Infrastructure

-  Wind Turbine Location
-  Collector Line
-  Transmission Line
-  Transformer Sub-Station or Switch Yard

Significant Wildlife Habitat

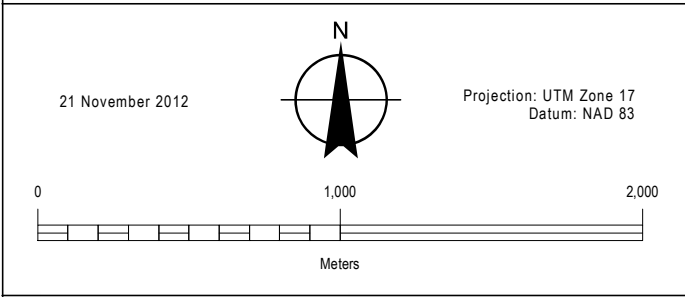
-  Turtle Wintering Area
-  Turtle Nesting Area
-  Deer Wintering Yard
-  Amphibian Breeding Habitat
-  Bat Maternal Colonies
-  Species of Conservation Concern
-  120m From Project Location
-  Study Area
-  Ecoregion 6E - 7E Division

NOTES:

1. Reference the Figure 1 Key Map for location in the overall project area.

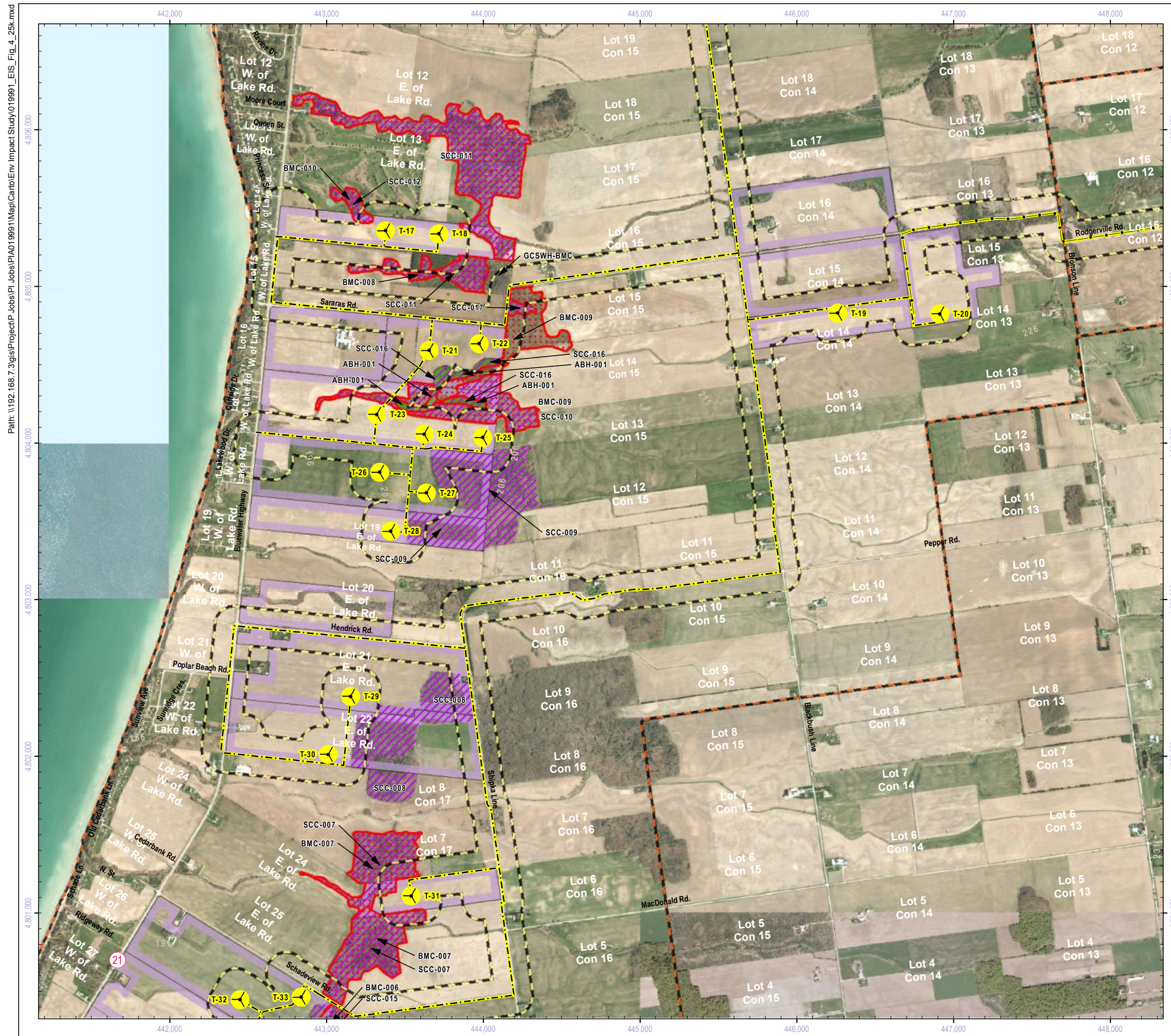
DATA SOURCES:

1. County of Huron (including Imagery: 2010)
2. Ministry of Natural Resources, © Queen's Printer for Ontario
3. Natural Resources Canada © Her Majesty the Queen in Right of Canada



Title
Grand Bend Wind Farm
Grand Bend Wind Limited Partnership
Environmental Impact Study
Significant Wildlife Habitat

Prepared	P. Stubbert	Checked	T. Radburn	Figure Number
Scale	1:25,000	Project	PIA019991	41



Project Infrastructure

- Wind Turbine Location
- Collector Line
- Transmission Line
- Transformer Sub-Station or Switch Yard

Significant Wildlife Habitat

- Turtle Wintering Area
- Turtle Nesting Area
- Deer Wintering Yard
- Amphibian Breeding Habitat
- Bat Maternal Colonies
- Species of Conservation Concern
- 120m From Project Location
- Study Area
- Ecoregion 6E - 7E Division

NOTES:

- Reference the Figure 1 Key Map for location in the overall project area.

DATA SOURCES:

- County of Huron (including Imagery: 2010)
- Ministry of Natural Resources, © Queen's Printer for Ontario
- Natural Resources Canada © Her Majesty the Queen in Right of Canada

21 November 2012

Projection: UTM Zone 17
Datum: NAD 83

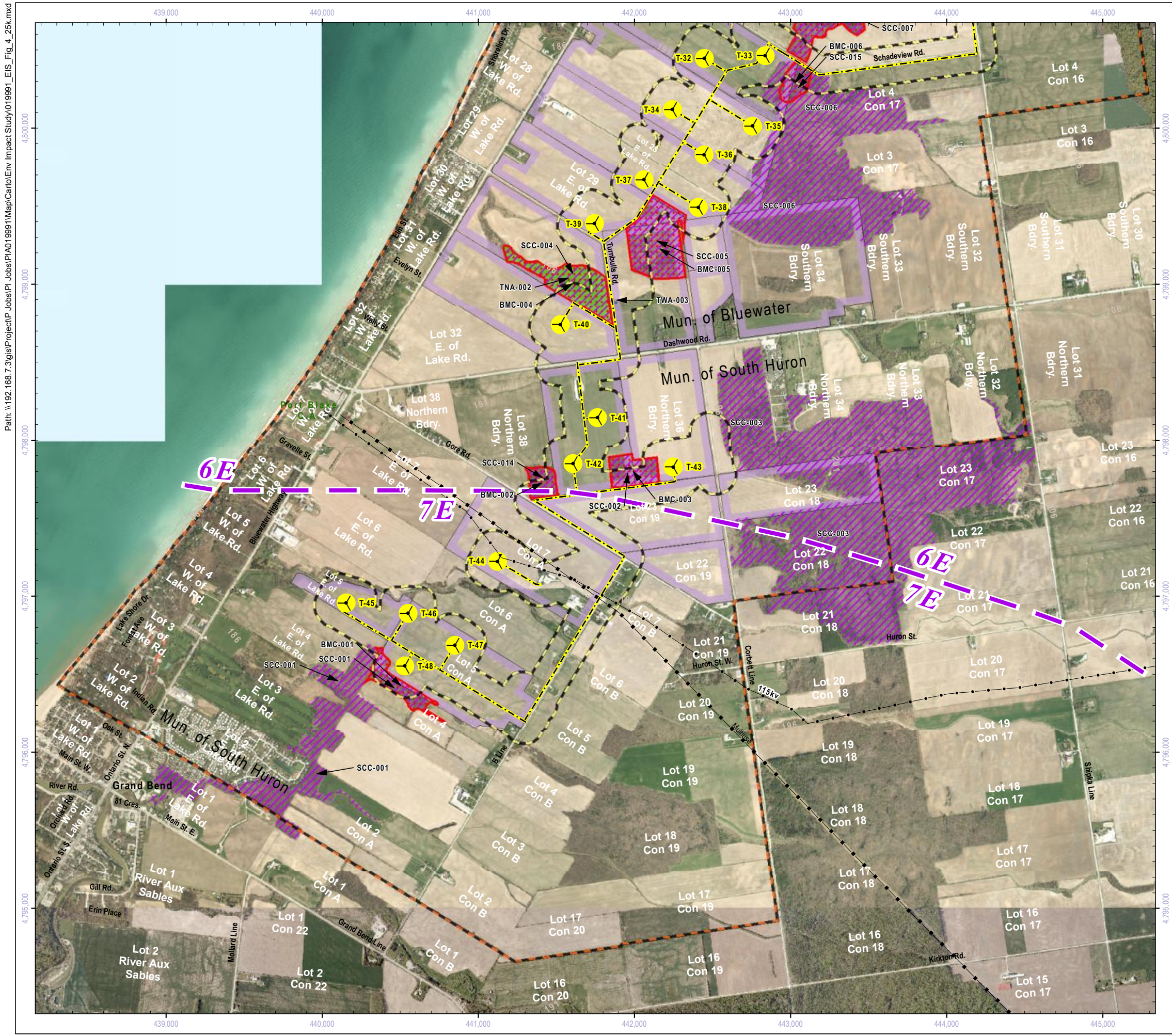
NEEGAN BURNSIDE

Title

**Grand Bend Wind Farm
Grand Bend Wind Limited Partnership
Environmental Impact Study
Significant Wildlife Habitat**

Prepared	P. Stubbert	Checked	T. Radburn	Figure Number
Scale	1:25,000	Project	PIA019991	4m

Path: \\192.168.7.3\gis\Project\PIA019991\Map\Carto\Env Impact Study\019991_EIS_Fig_4_25k.mxd



Project Infrastructure

- Wind Turbine Location
- Collector Line
- Transmission Line
- Transformer Sub-Station or Switch Yard

Significant Wildlife Habitat

- Turtle Wintering Area
- Turtle Nesting Area
- Deer Wintering Yard
- Amphibian Breeding Habitat
- Bat Maternal Colonies
- Species of Conservation Concern
- 120m From Project Location
- Study Area
- Ecoregion 6E - 7E Division

NOTES:

- Reference the Figure 1 Key Map for location in the overall project area.

DATA SOURCES:

- County of Huron (including Imagery: 2010)
- Ministry of Natural Resources, © Queen's Printer for Ontario
- Natural Resources Canada © Her Majesty the Queen in Right of Canada

21 November 2012

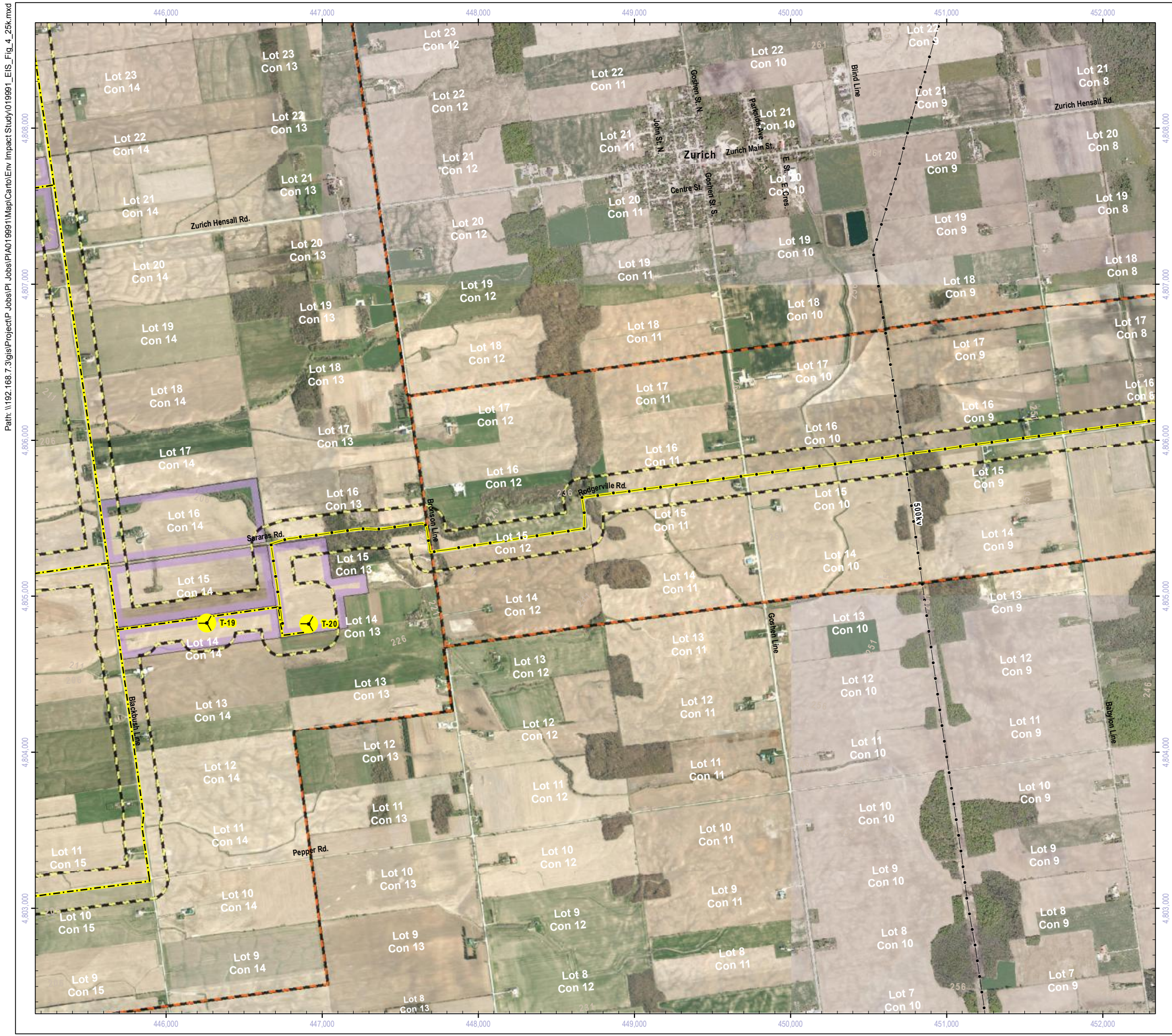
Projection: UTM Zone 17
Datum: NAD 83







Title

**Grand Bend Wind Farm
Grand Bend Wind Limited Partnership
Environmental Impact Study
Significant Wildlife Habitat**


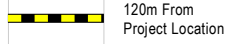
Prepared	P. Stubbart	Checked	T. Radburn	Figure Number
Scale	1:25,000	Project	PIA019991	4n



Project Infrastructure

-  Wind Turbine Location
-  Collector Line
-  Transmission Line
-  Transformer Sub-Station or Switch Yard

Significant Wildlife Habitat

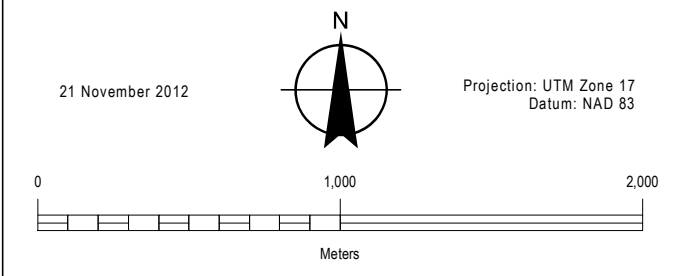
-  Turtle Wintering Area
-  Turtle Nesting Area
-  Deer Wintering Yard
-  Amphibian Breeding Habitat
-  Bat Maternal Colonies
-  Species of Conservation Concern
-  120m From Project Location
-  Study Area
-  Ecregion 6E - 7E Division

NOTES:

1. Reference the Figure 1 Key Map for location in the overall project area.

DATA SOURCES:

1. County of Huron (including Imagery: 2010)
2. Ministry of Natural Resources, © Queen's Printer for Ontario
3. Natural Resources Canada © Her Majesty the Queen in Right of Canada







Title
Grand Bend Wind Farm
Grand Bend Wind Limited Partnership
Environmental Impact Study
Significant Wildlife Habitat

Prepared	P. Stubbert	Checked	T. Radburn	Figure Number
Scale	1:25,000	Project	PIA019991	40



Project Infrastructure

-  Wind Turbine Location
-  Collector Line
-  Transmission Line
-  Transformer Sub-Station or Switch Yard

Significant Wildlife Habitat

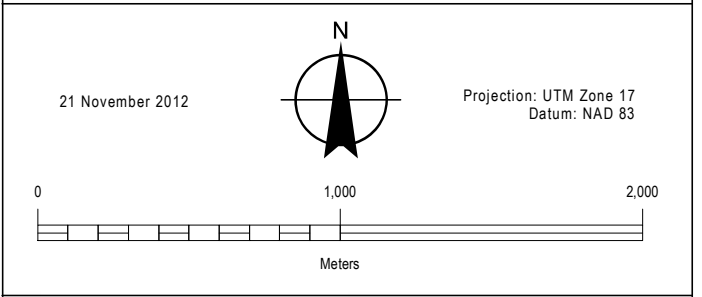
-  Turtle Wintering Area
-  Turtle Nesting Area
-  Deer Wintering Yard
-  Amphibian Breeding Habitat
-  Bat Maternal Colonies
-  Species of Conservation Concern
-  120m From Project Location
-  Study Area
-  Ecoregion 6E - 7E Division

NOTES:

1. Reference the Figure 1 Key Map for location in the overall project area.

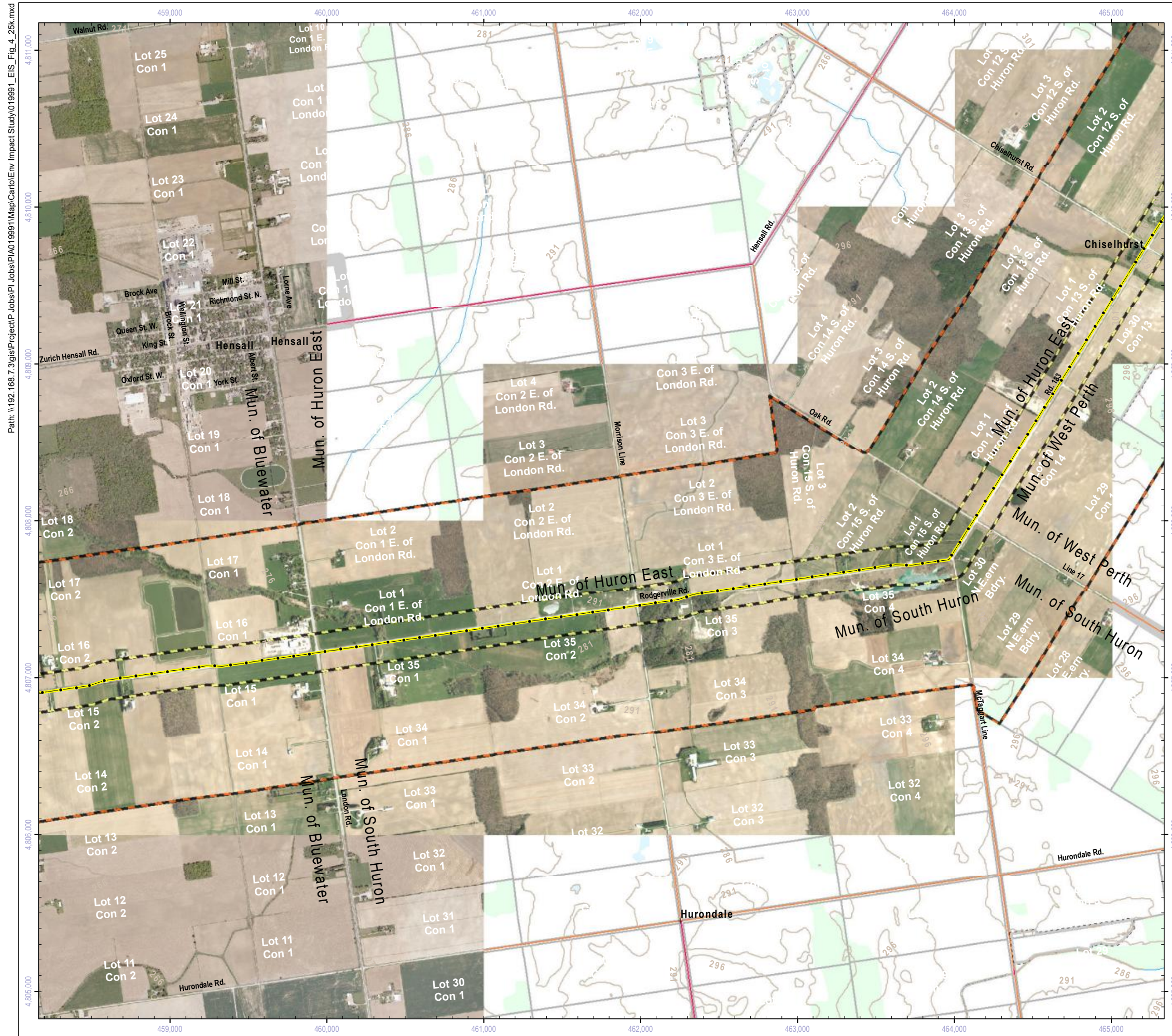
DATA SOURCES:

1. County of Huron (including Imagery: 2010)
2. Ministry of Natural Resources, © Queen's Printer for Ontario
3. Natural Resources Canada © Her Majesty the Queen in Right of Canada



Title
Grand Bend Wind Farm
Grand Bend Wind Limited Partnership
Environmental Impact Study
Significant Wildlife Habitat

Prepared	P. Stubbert	Checked	T. Radburn	Figure Number
Scale	1:25,000	Project	PIA019991	4p



Project Infrastructure

- Wind Turbine Location
- Collector Line
- Transmission Line
- Transformer Sub-Station or Switch Yard

Significant Wildlife Habitat

- Turtle Wintering Area
- Turtle Nesting Area
- Deer Wintering Yard
- Amphibian Breeding Habitat
- Bat Maternal Colonies
- Species of Conservation Concern
- 120m From Project Location
- Study Area
- Ecoregion 6E - 7E Division

NOTES:

- Reference the Figure 1 Key Map for location in the overall project area.

DATA SOURCES:

- County of Huron (including Imagery: 2010)
- Ministry of Natural Resources, © Queen's Printer for Ontario
- Natural Resources Canada © Her Majesty the Queen in Right of Canada

21 November 2012

Projection: UTM Zone 17
Datum: NAD 83

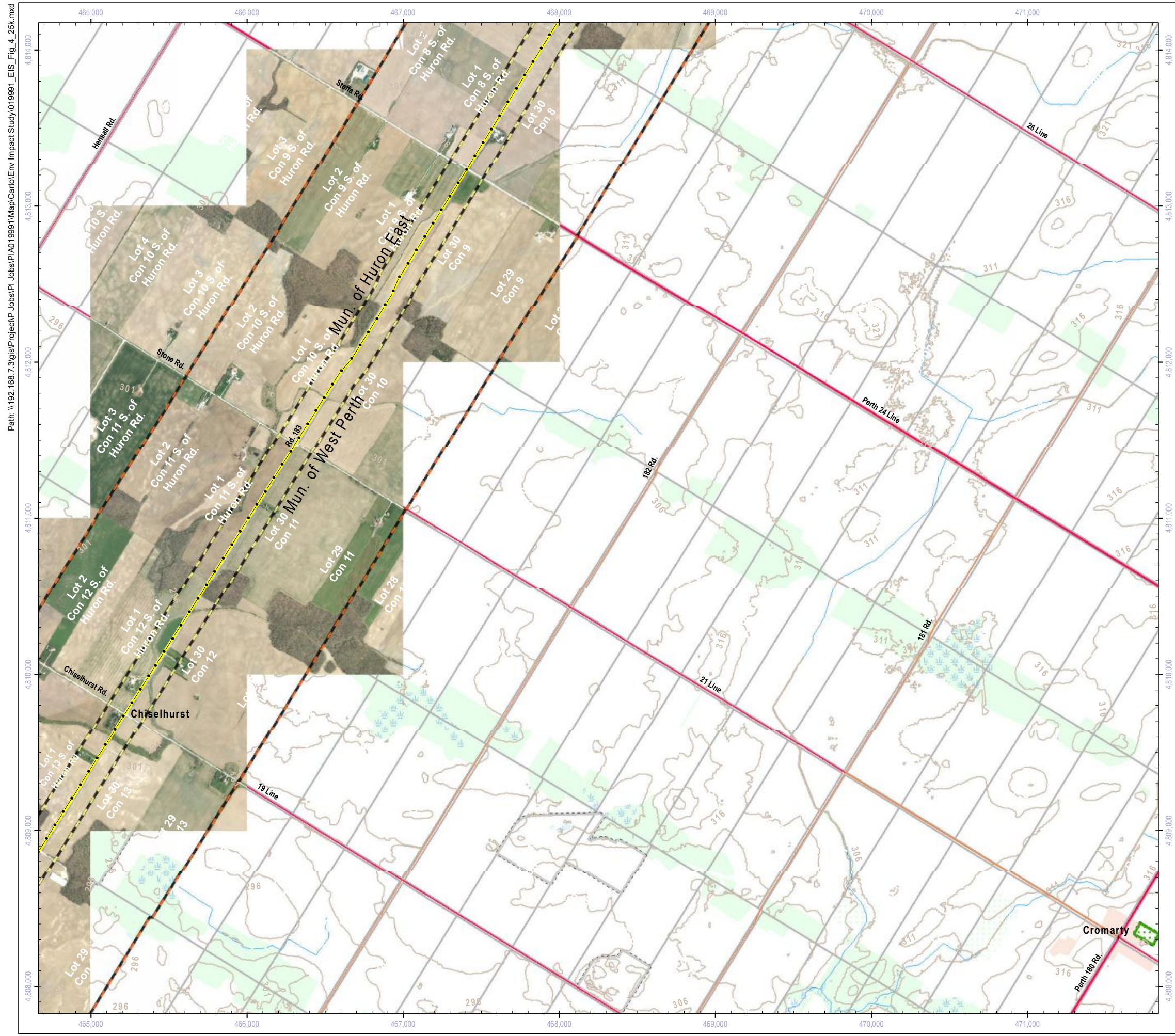
0 1,000 2,000
Meters

NEEGAN BURNSIDE

Title

**Grand Bend Wind Farm
Grand Bend Wind Limited Partnership
Environmental Impact Study
Significant Wildlife Habitat**

Prepared	P. Stubbert	Checked	T. Radburn	Figure Number
Scale	1:25,000	Project	PIA019991	4q



Project Infrastructure

- Wind Turbine Location
- Collector Line
- Transmission Line
- Transformer Sub-Station or Switch Yard

Significant Wildlife Habitat

- Turtle Wintering Area
- Turtle Nesting Area
- Deer Wintering Yard
- Amphibian Breeding Habitat
- Bat Maternal Colonies
- Species of Conservation Concern
- 120m From Project Location
- Study Area
- Ecoregion 6E - 7E Division

NOTES:

- Reference the Figure 1 Key Map for location in the overall project area.

DATA SOURCES:

- County of Huron (including Imagery: 2010)
- Ministry of Natural Resources, © Queen's Printer for Ontario
- Natural Resources Canada © Her Majesty the Queen in Right of Canada

21 November 2012

Projection: UTM Zone 17
Datum: NAD 83



Title

**Grand Bend Wind Farm
Grand Bend Wind Limited Partnership
Environmental Impact Study
Significant Wildlife Habitat**

Prepared	P. Stubbert	Checked	T. Radburn	Figure Number
Scale	1:25,000	Project	PIA019991	4r



Project Infrastructure

- Wind Turbine Location
- Collector Line
- Transmission Line
- Transformer Sub-Station or Switch Yard

Significant Wildlife Habitat

- Turtle Wintering Area
- Turtle Nesting Area
- Deer Wintering Yard
- Amphibian Breeding Habitat
- Bat Maternal Colonies
- Species of Conservation Concern
- 120m From Project Location
- Study Area
- Ecoregion 6E - 7E Division

NOTES:

- Reference the Figure 1 Key Map for location in the overall project area.

DATA SOURCES:

- County of Huron (including Imagery: 2010)
- Ministry of Natural Resources, © Queen's Printer for Ontario
- Natural Resources Canada © Her Majesty the Queen in Right of Canada

21 November 2012

Projection: UTM Zone 17
Datum: NAD 83

Meters



Title

**Grand Bend Wind Farm
Grand Bend Wind Limited Partnership
Environmental Impact Study
Significant Wildlife Habitat**

Prepared	P. Stubbert	Checked	T. Radburn	Figure Number
Scale	1:25,000	Project	PIA019991	4s

Path: \\192.168.7.3\gis\Project\PIA019991\Map\Carto\Env Impact Study\019991_EIS_Fig_4_25k.mxd