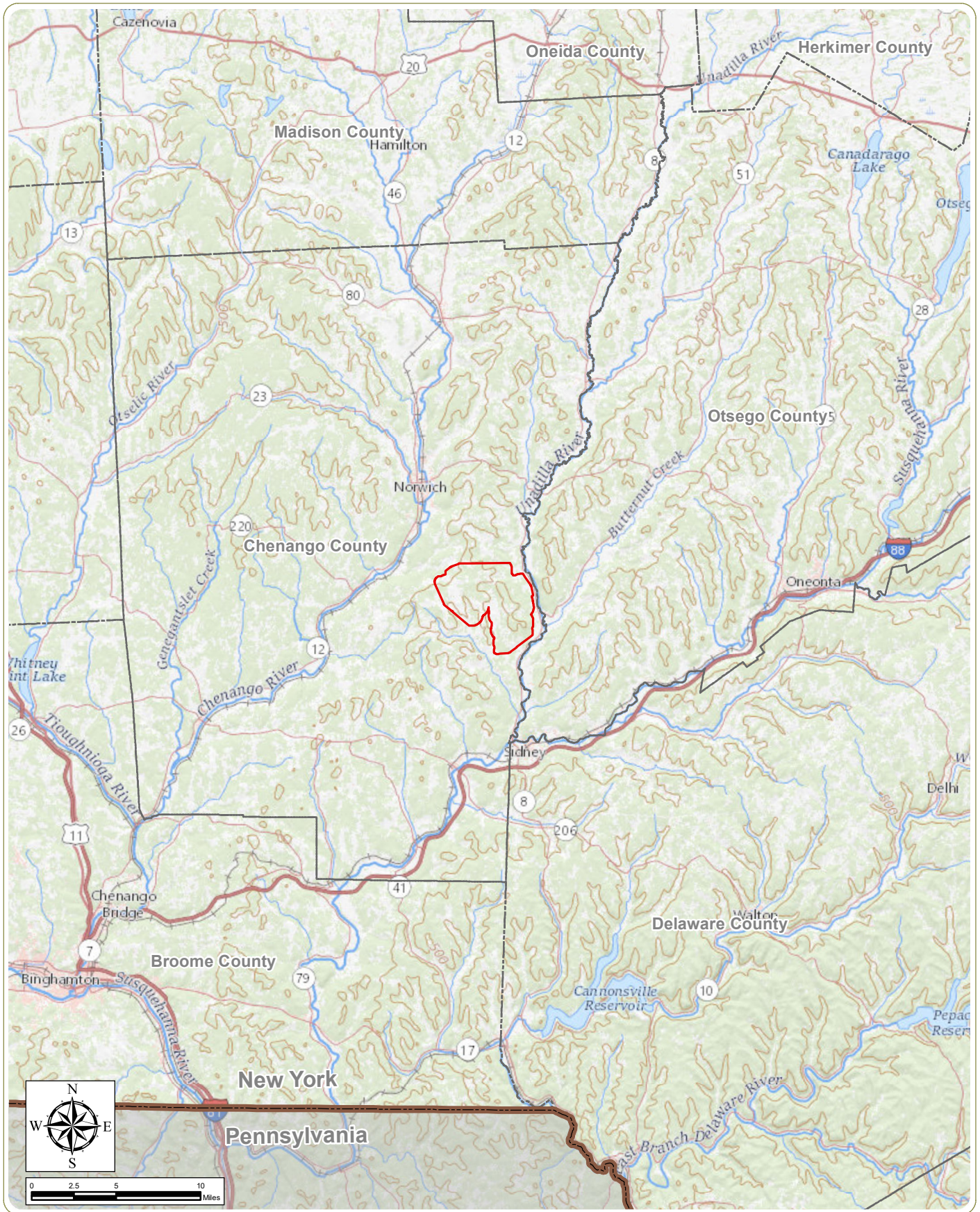



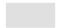


Figures

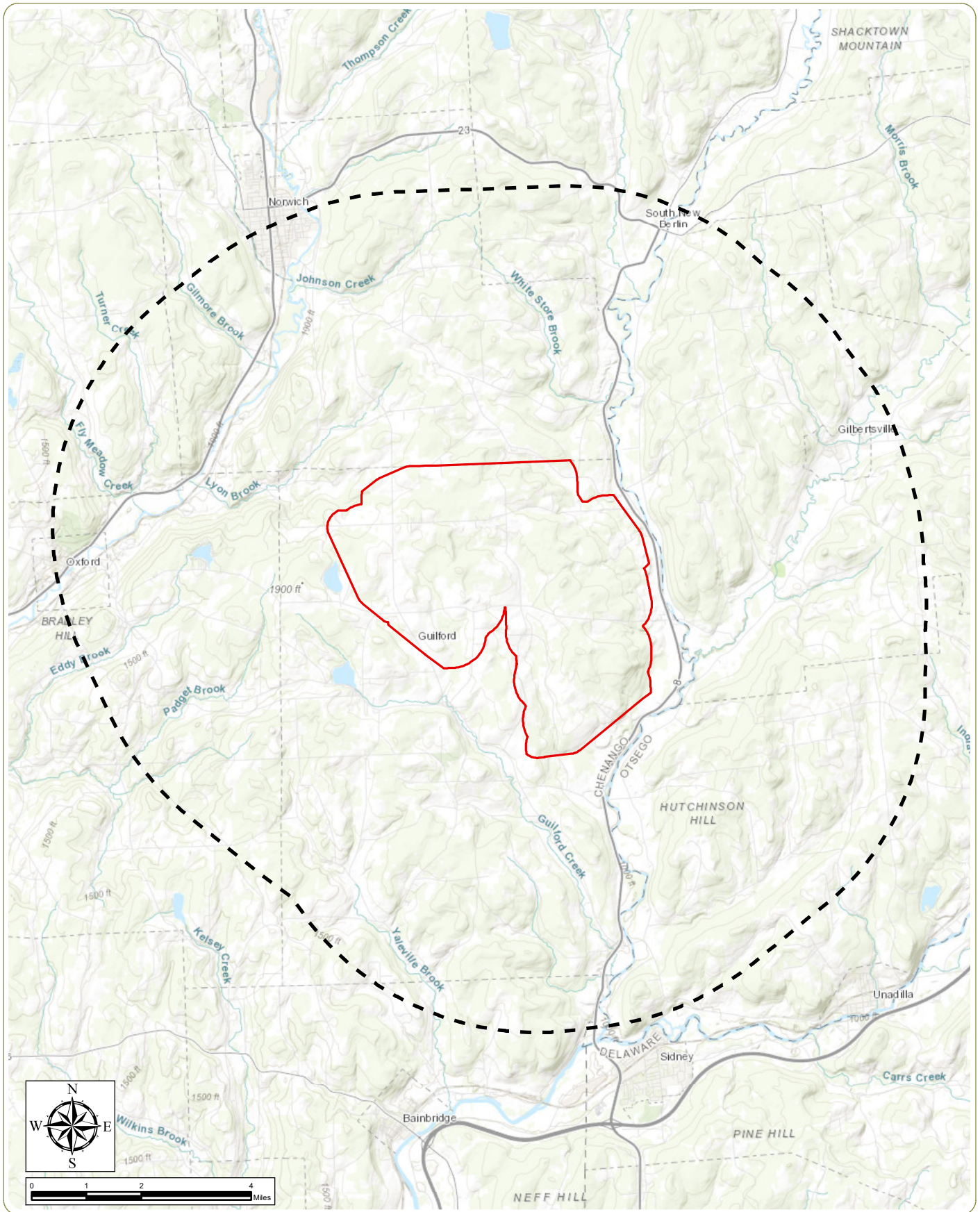


High Bridge Wind Project
 Town of Guilford, Chenango County, New York
Preliminary Scoping Statement
Figure 1. Regional Facility Location

Notes: 1. Basemap: "USGS TNM Topo Base Map" displayed via the USGS Topo Map Server. 2. This map was generated in ArcMap on January 22, 2019. 3. This is a color graphic. Reproduction in grayscale may misrepresent the data.

-  Facility Site
-  State Boundary
-  County Boundary
-  Pennsylvania State Mask







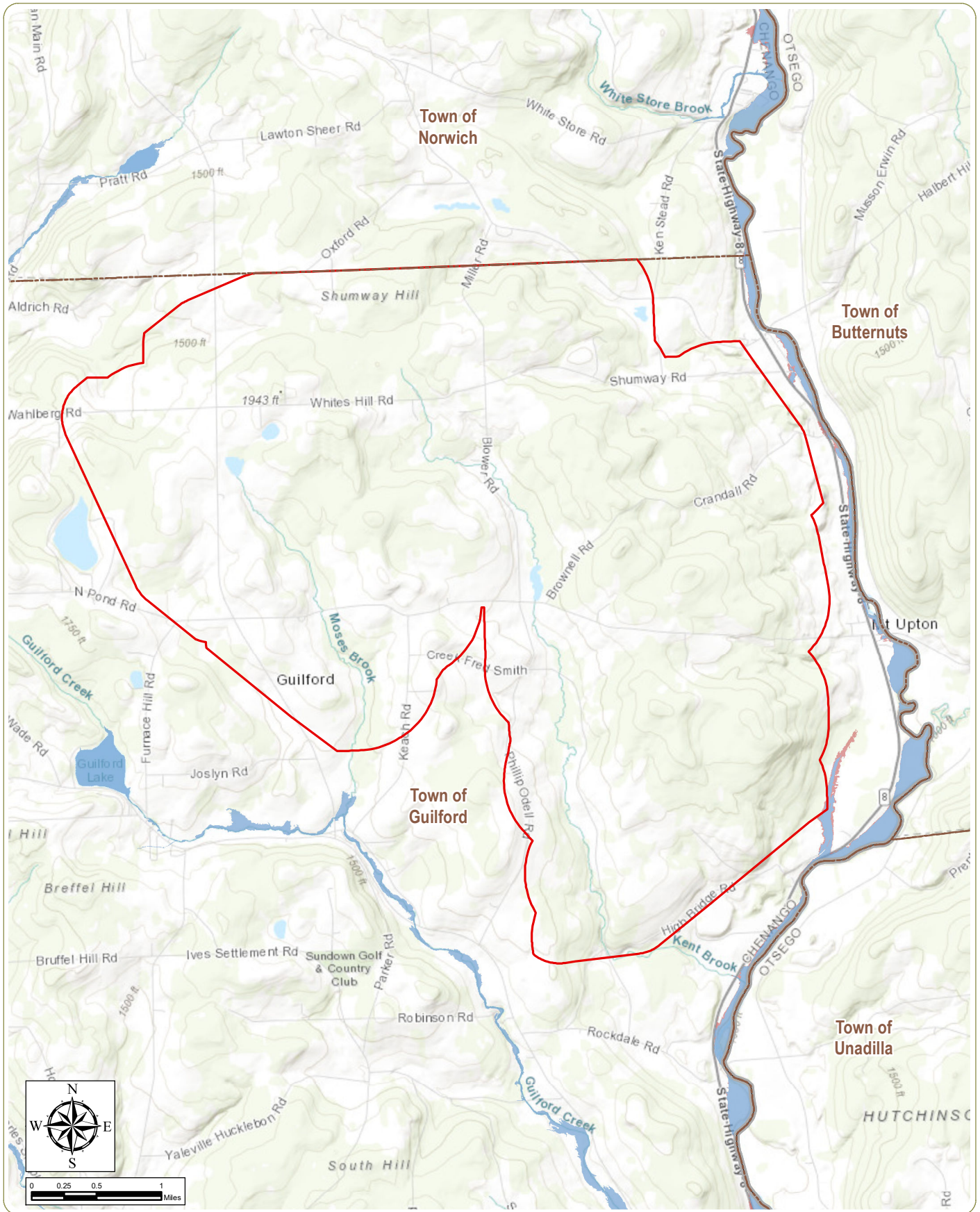
High Bridge Wind Project
 Town of Guilford, Chenango County, New York
Preliminary Scoping Statement

Figure 2. Facility Site and 5-mile Study Area

Notes: 1. Basemap: ESRI ArcGIS Online "World Topographic Map" map service.r. 2. This map was generated in ArcMap on January 22, 2019. 3. This is a color graphic. Reproduction in grayscale may misrepresent the data.

 5-Mile Study Area
 Facility Site



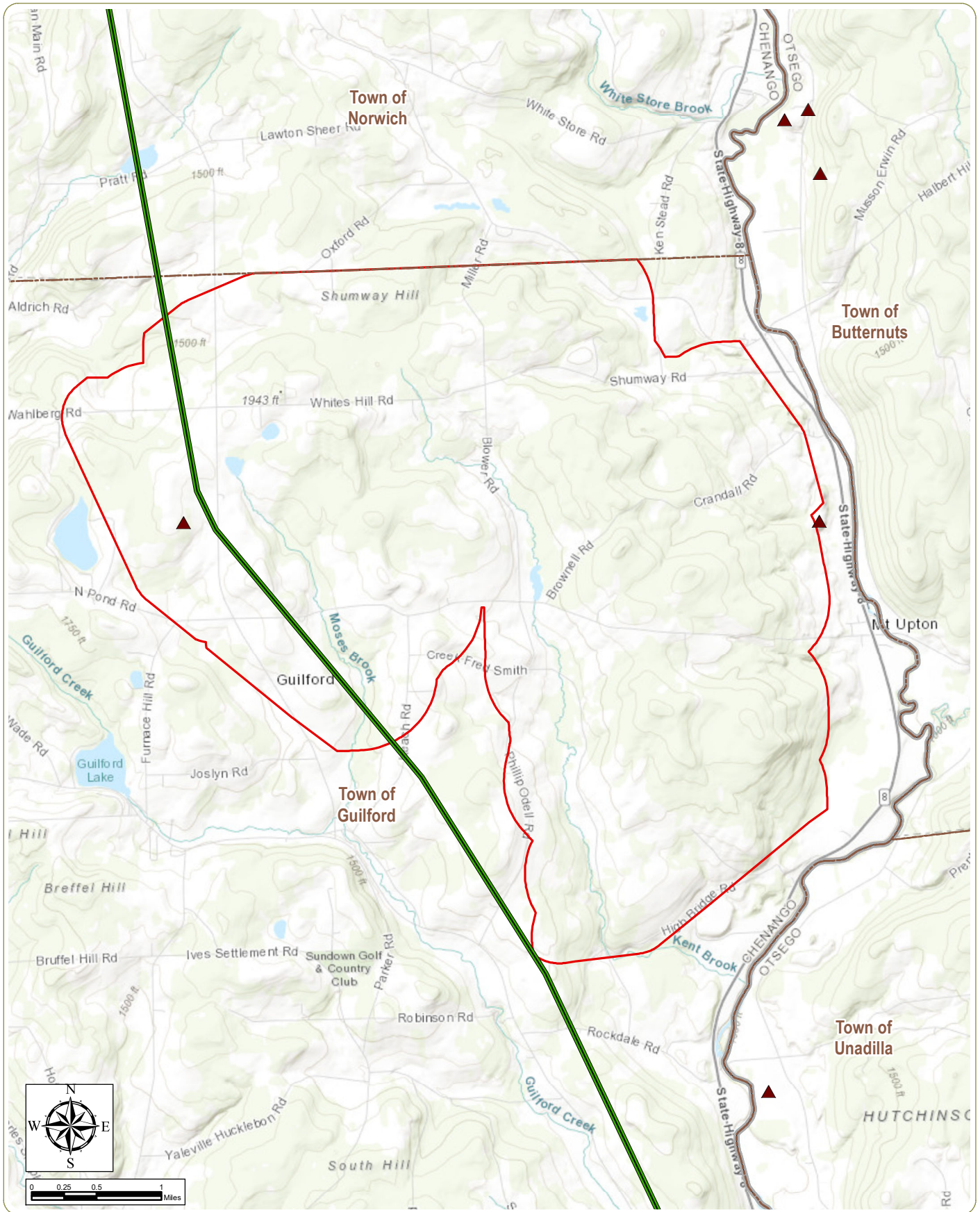


High Bridge Wind Project
 Town of Guilford, Chenango County, New York
Preliminary Scoping Statement
Figure 3. FEMA Floodplains

Notes: 1. Basemap: ESRI ArcGIS Online "World Topographic Map" map service.. 2. This map was generated in ArcMap on January 23, 2019. 3. This is a color graphic. Reproduction in grayscale may misrepresent the data.

- 100-Year Flood Plain
- 500-Year Flood Plain
- Town Boundary
- County Boundary
- Facility Site



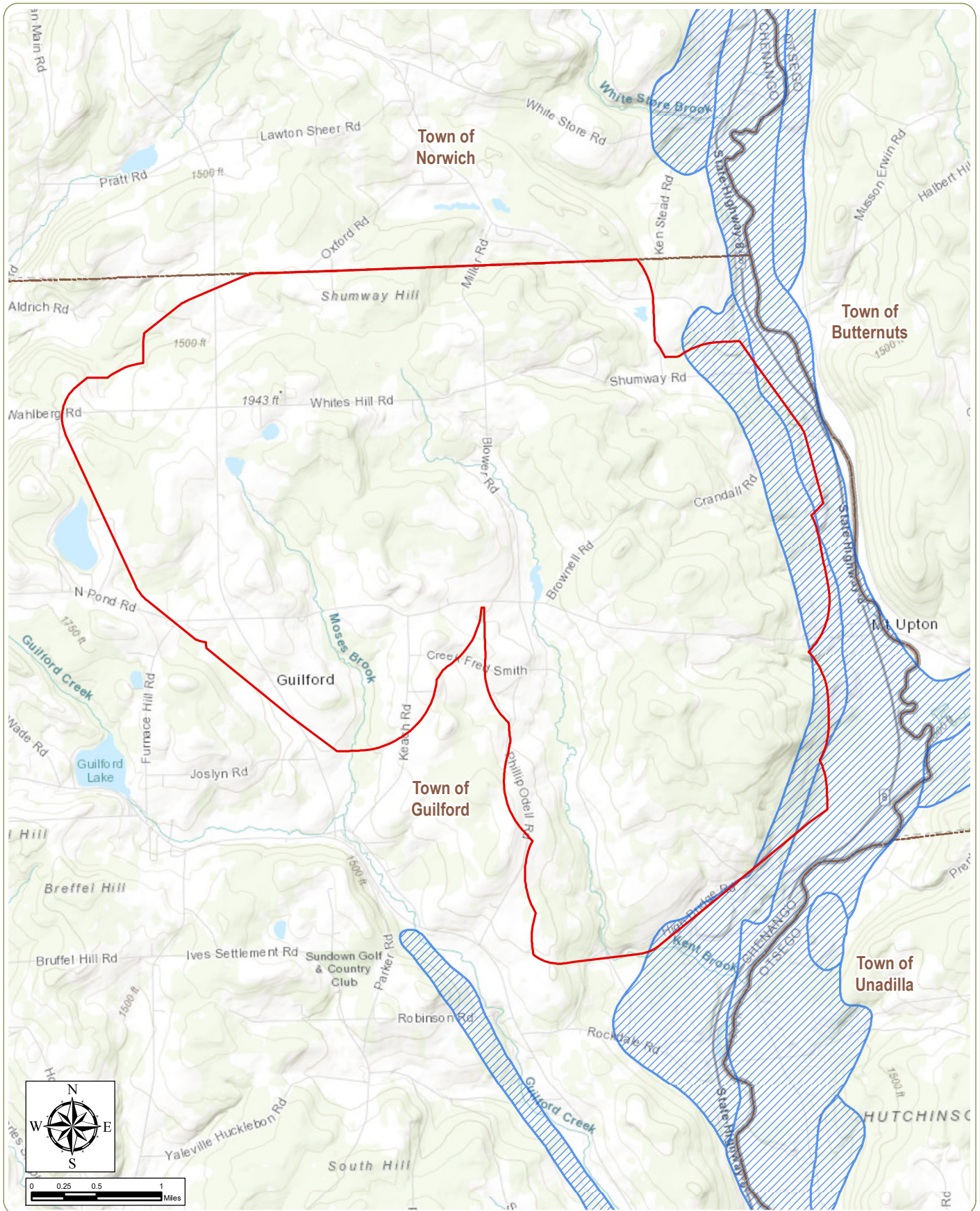


High Bridge Wind Project
 Town of Guilford, Chenango County, New York
Preliminary Scoping Statement
Figure 4. Mines and Transmission Lines

Notes: 1. Basemap: "USGS TNM Topo Base Map" displayed via the USGS Topo Map Server. 2. This map was generated in ArcMap on January 22, 2019. 3. This is a color graphic. Reproduction in grayscale may misrepresent the data.





- ▲ Mine
- Transmission Line
- - - Town Boundary
- ▭ County Boundary
- ▭ Facility Site



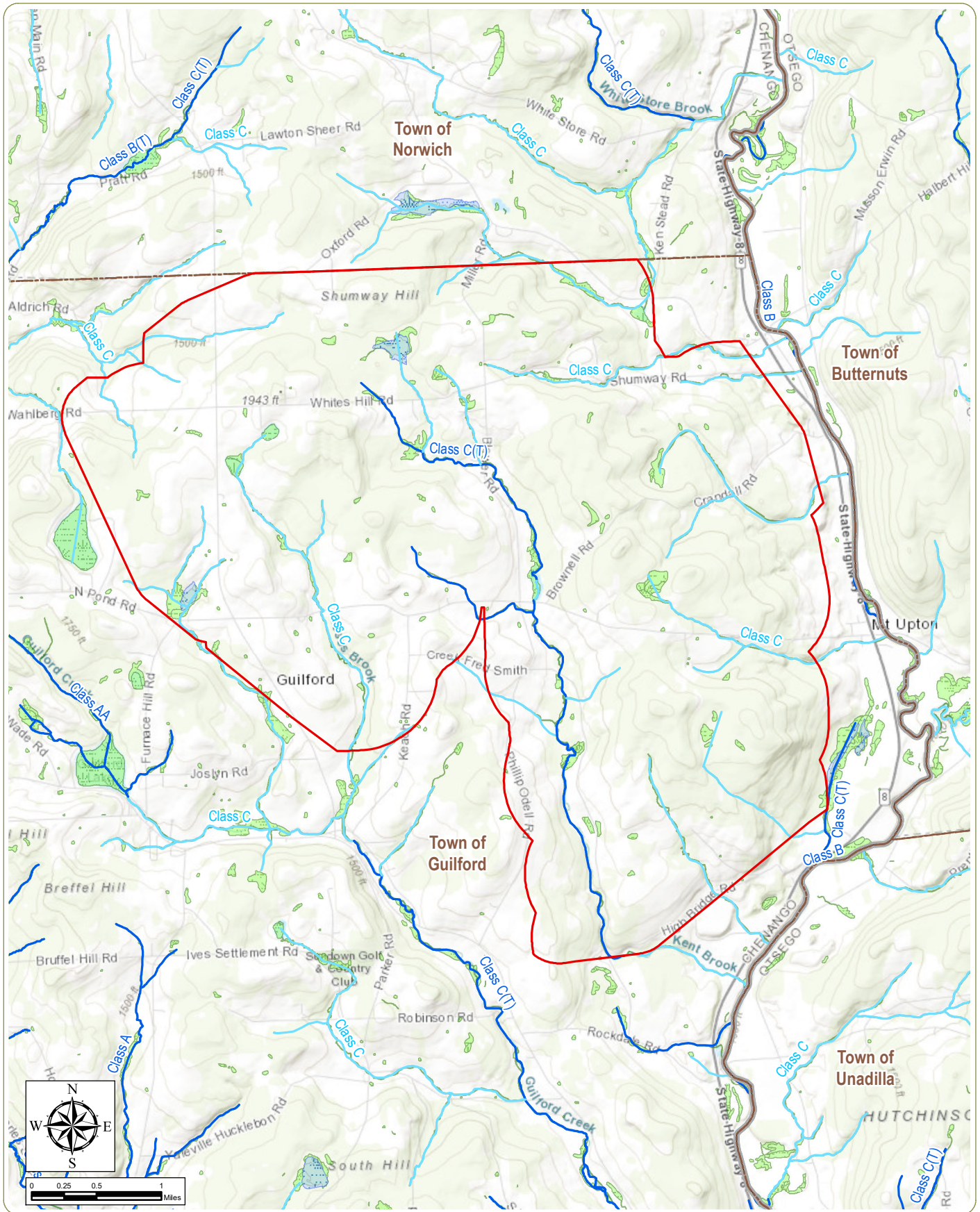


High Bridge Wind Project
 Town of Guilford, Chenango County, New York
Preliminary Scoping Statement
Figure 5. Groundwater Aquifers

Notes: 1. Basemap: ESRI ArcGIS Online "World Topographic Map" map service. 2. This map was generated in ArcMap on January 23, 2019. 3. This is a color graphic. Reproduction in grayscale may misrepresent the data.

-  Surficial Aquifer
-  Town Boundary
-  County Boundary
-  Facility Site



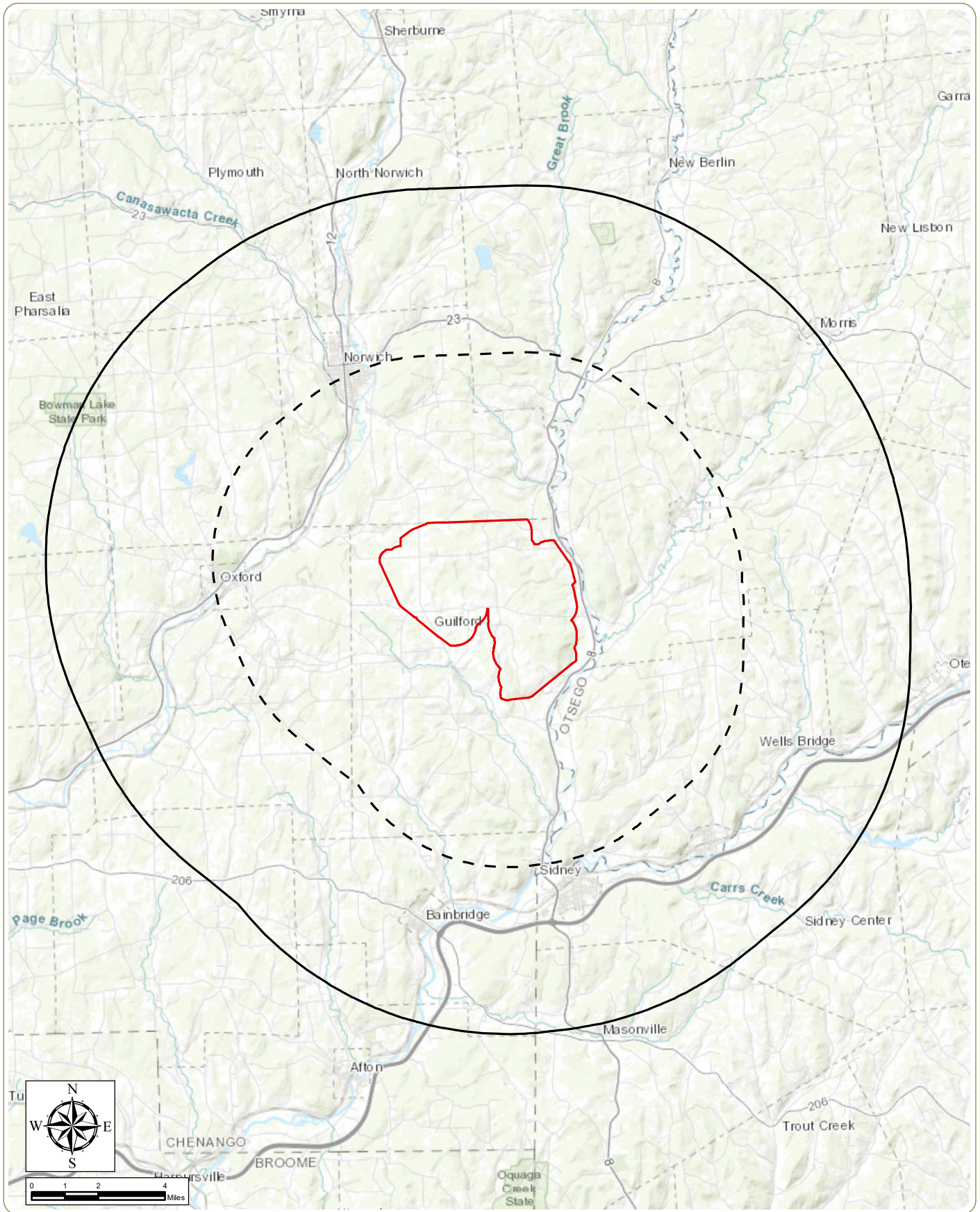


High Bridge Wind Project
 Town of Guilford, Chenango County, New York
Preliminary Scoping Statement
Figure 6. Mapped Wetlands and Streams

Notes: 1. Basemap: ESRI ArcGIS Online "World Topographic Map" map service. 2. This map was generated in ArcMap on January 23, 2019. 3. This is a color graphic. Reproduction in grayscale may misrepresent the data.

- NYSDEC Mapped Protected Stream
- NYSDEC Mapped Unprotected Stream
- NYSDEC Mapped Wetland
- Town Boundary
- County Boundary
- Facility Site
- NWI Mapped Wetland

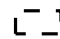
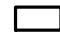





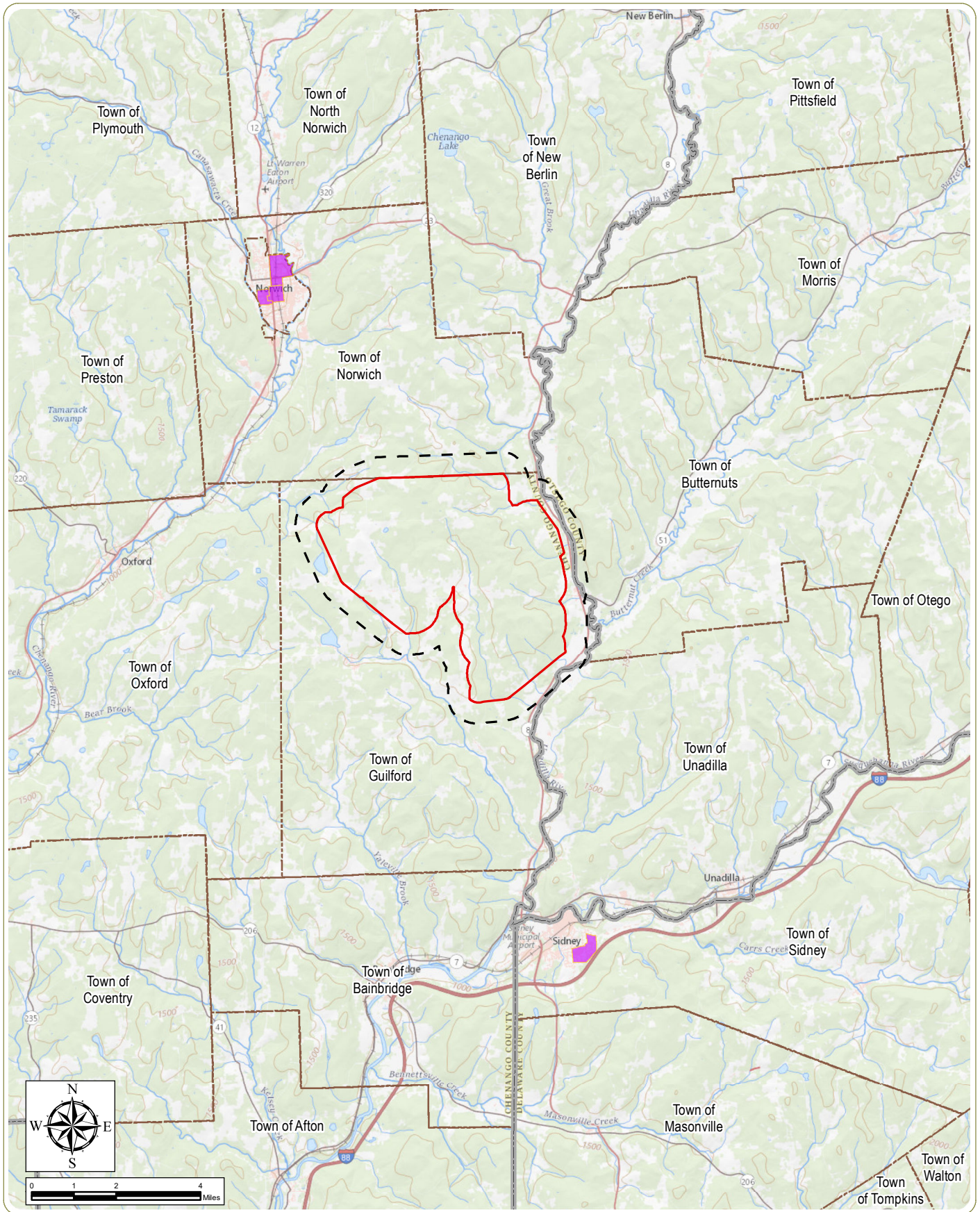
High Bridge Wind Project
 Town of Guilford, Chenango County, New York
Preliminary Scoping Statement

Figure 7. Preliminary Visual Study Area

Notes: 1. Basemap: ESRI ArcGIS Online "World Topographic Map" map service. 2. This map was generated in ArcMap on January 22, 2019. 3. This is a color graphic. Reproduction in grayscale may misrepresent the data.

-  5-Mile Boundary
-  10-Mile Boundary
-  Facility Site





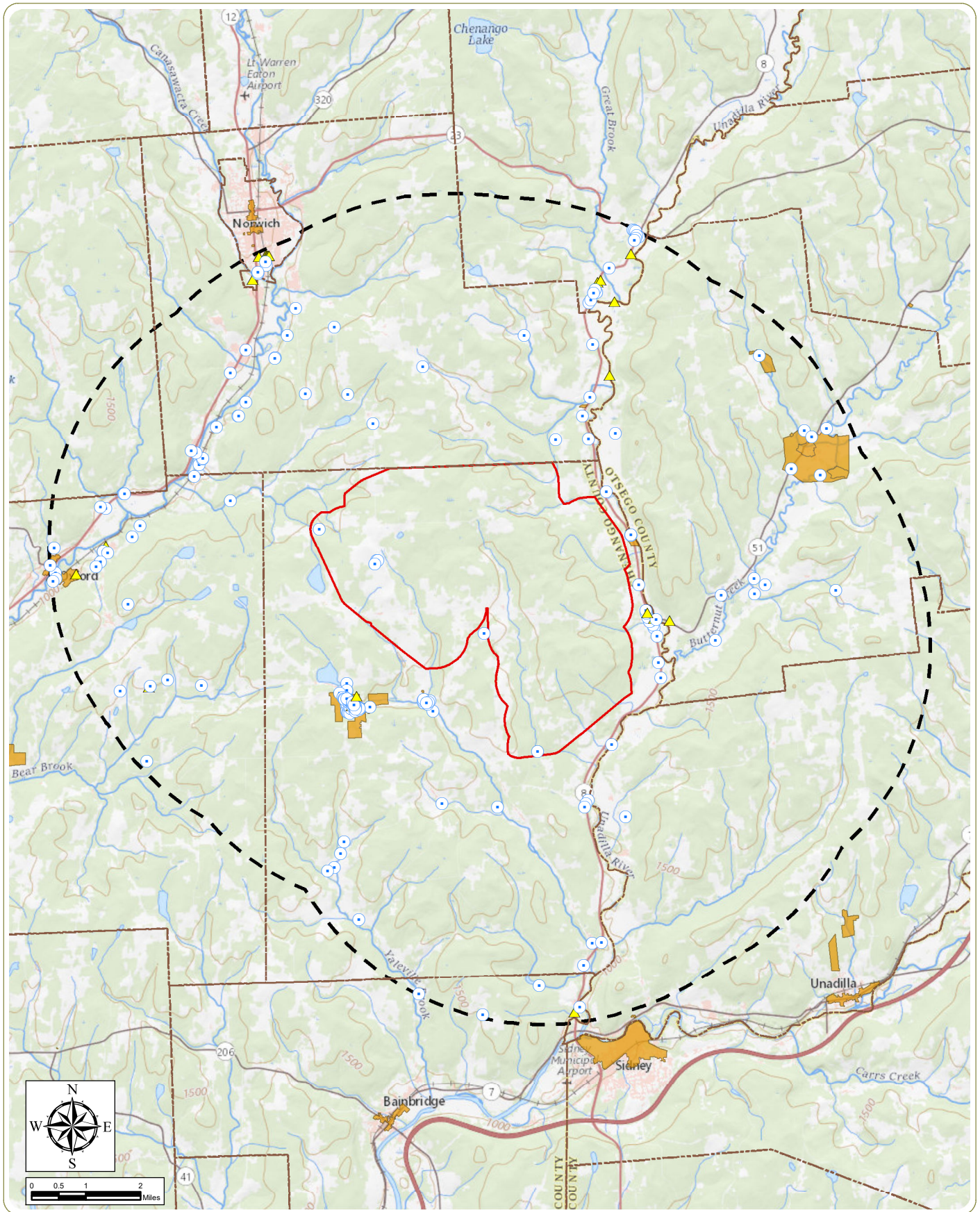
High Bridge Wind Project
 Town of Guilford, Chenango County, New York
Preliminary Scoping Statement

Figure 8. Environmental Justice Areas

Notes: 1. Basemap: "USGS TNM Topo Base Map" displayed via the USGS Topo Map Server. 2. This map was generated in ArcMap on January 22, 2019. 3. This is a color graphic. Reproduction in grayscale may misrepresent the data.

- 0.5-Mile Environmental Justice Study Area
- Potential Environmental Justice Area
- Town Boundary
- County Boundary
- Facility Site





High Bridge Wind Project
 Town of Guilford, Chenango County, New York
Preliminary Scoping Statement
Figure 9: Mapped Cultural Resources

Notes: 1. Basemap: "USGS TNM Topo Base Map" displayed via the USGS Topo Map Server. 2. This map was generated in ArcMap on January 14, 2019. 3. This is a color graphic. Reproduction in grayscale may misrepresent the data.

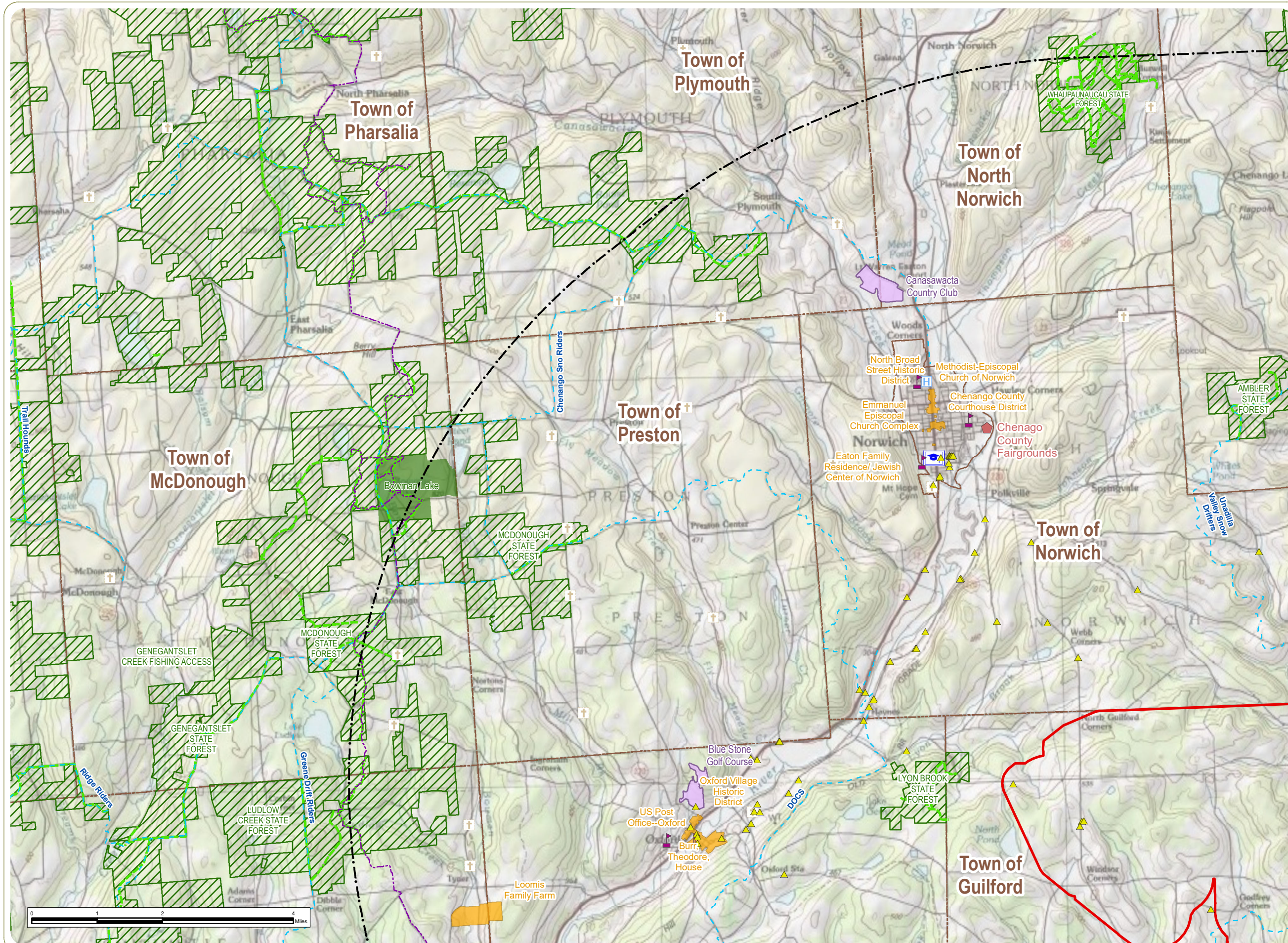
- ▲ NRHP-Eligible Resource (NYSOPRHP Determined)
- NRHP Eligibility Undetermined
- NRHP-Listed Site
- Town Boundary
- 5-mile Study Area
- Facility Site

High Bridge Wind Project

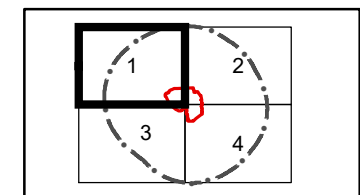
Town of Guilford, Chenango County, New York

Preliminary Scoping Statement

Figure 10: Sensitive Sites Sheet 1 of 4



- NRHP-Eligible Resources
- Public School
- Cemetery
- Hospital
- College
- Fairgrounds
- Snowmobile Trail
- Finger Lakes Trail
- Trails on State Land
- State Park
- Golf Course
- NRHP-Listed Site
- NYSDEC Land
- Town Boundary
- County Boundary
- Visual Study Area (10-mile Boundary)
- Facility Site



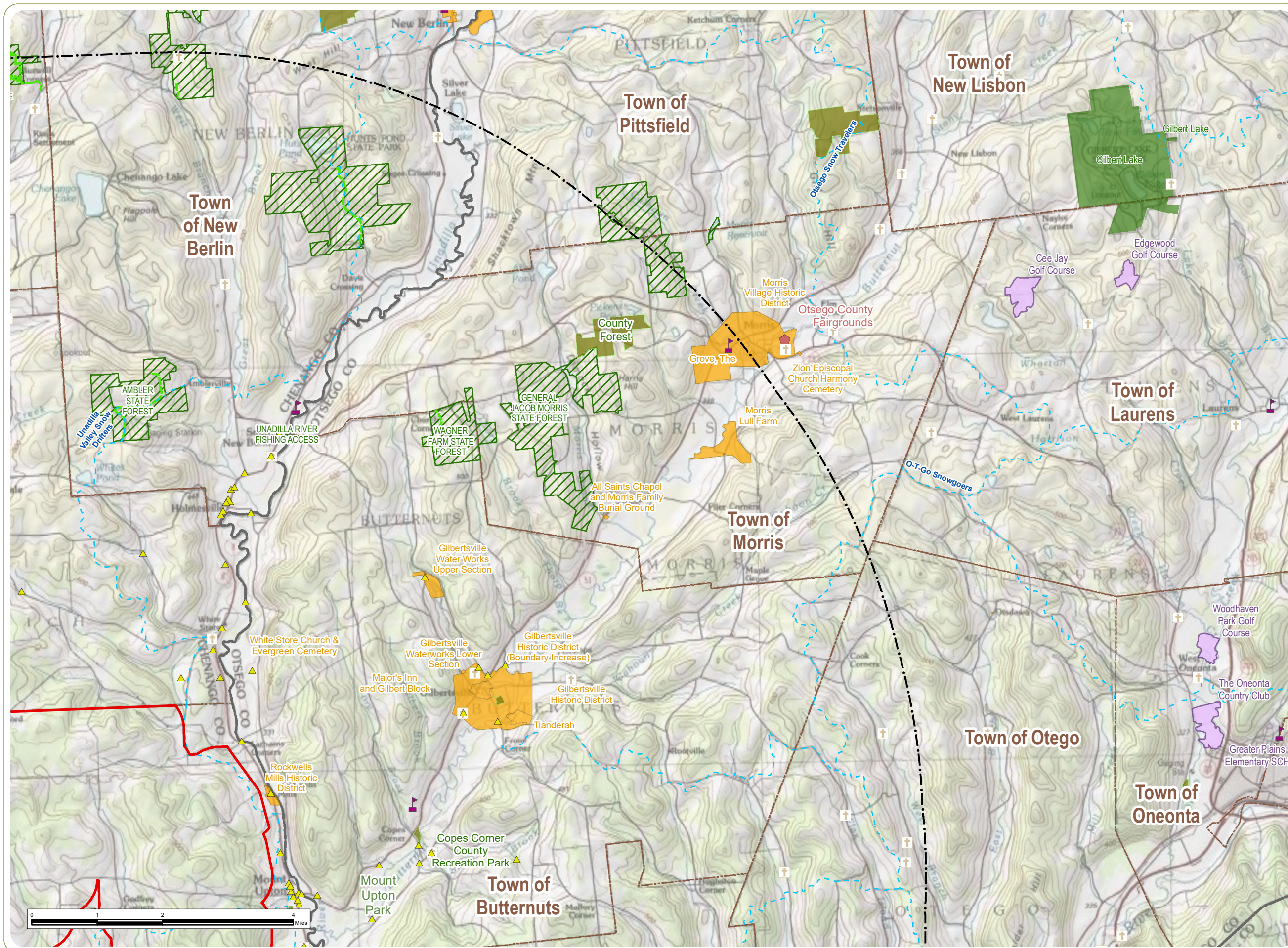
Notes: 1. Basemap: ESRI ArcGIS Online "USA Topo Maps" map service.. 2. This map was generated in ArcMap on January 22, 2019. 3. This is a color graphic. Reproduction in grayscale may misrepresent the data.

High Bridge Wind Project

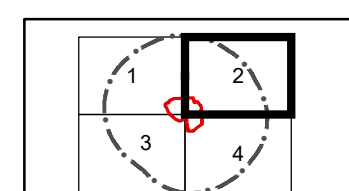
Town of Guilford, Chenango County, New York

Preliminary Scoping Statement

Figure 10: Sensitive Sites Sheet 2 of 4



- NRHP-Eligible Resources
- Public School
- Cemetery
- Fairgrounds
- Snowmobile Trail
- Trails on State Land
- State Park
- Golf Course
- Local Recreation
- NRHP-Listed Site
- NYSDEC Land
- Town Boundary
- County Boundary
- Visual Study Area (10-mile Boundary)
- Facility Site



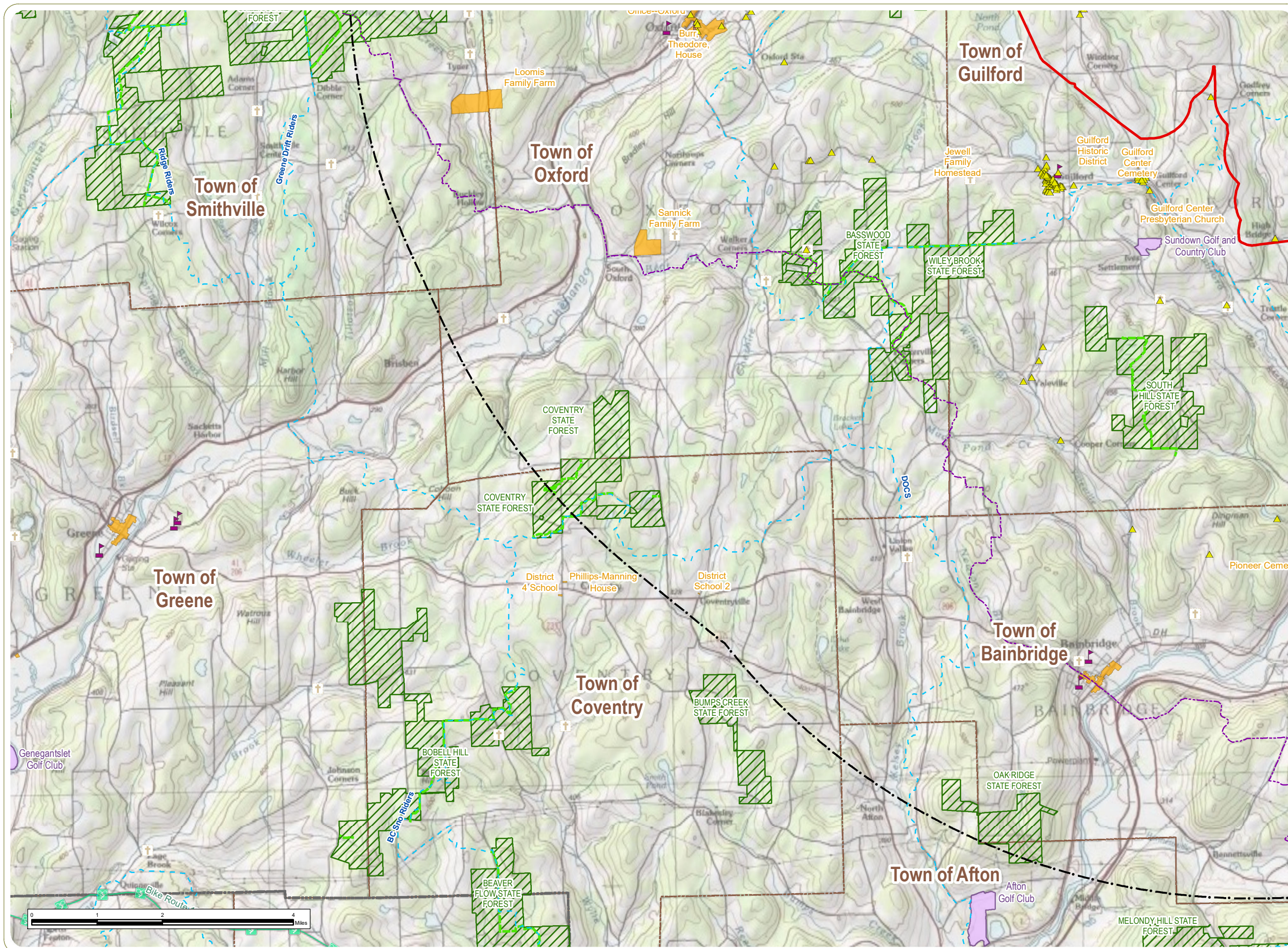
Notes: 1. Basemap: ESRI ArcGIS Online "USA Topo Maps" map service. 2. This map was generated in ArcMap on January 22, 2019. 3. This is a color graphic. Reproduction in grayscale may misrepresent the data.

High Bridge Wind Project

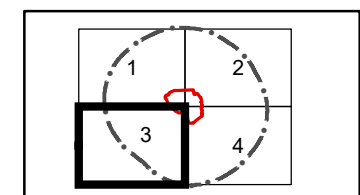
Town of Guilford, Chenango County, New York

Preliminary Scoping Statement

Figure 10: Sensitive Sites Sheet 3 of 4



- NRHP-Eligible Resources
- Public School
- Cemetery
- Snowmobile Trail
- Finger Lakes Trail
- Trails on State Land
- Bike Route
- Golf Course
- NRHP-Listed Site
- NYSDEC Land
- Town Boundary
- County Boundary
- Visual Study Area (10-mile Boundary)
- Facility Site



Notes: 1. Basemap: ESRI ArcGIS Online "USA Topo Maps" map service.. 2. This map was generated in ArcMap on January 22, 2019. 3. This is a color graphic. Reproduction in grayscale may misrepresent the data.

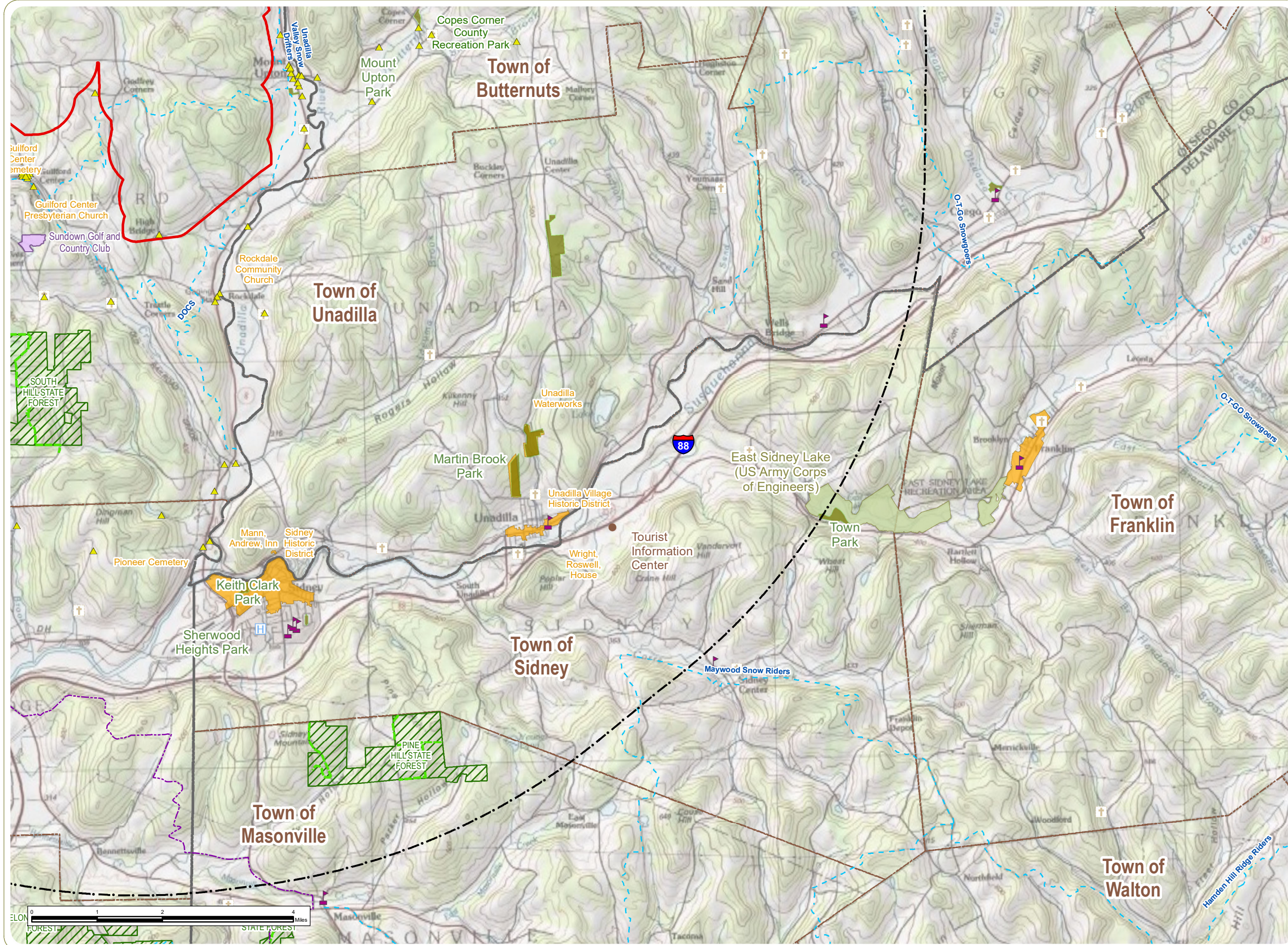


High Bridge Wind Project

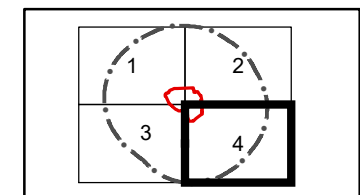
Town of Guilford, Chenango County, New York

Preliminary Scoping Statement

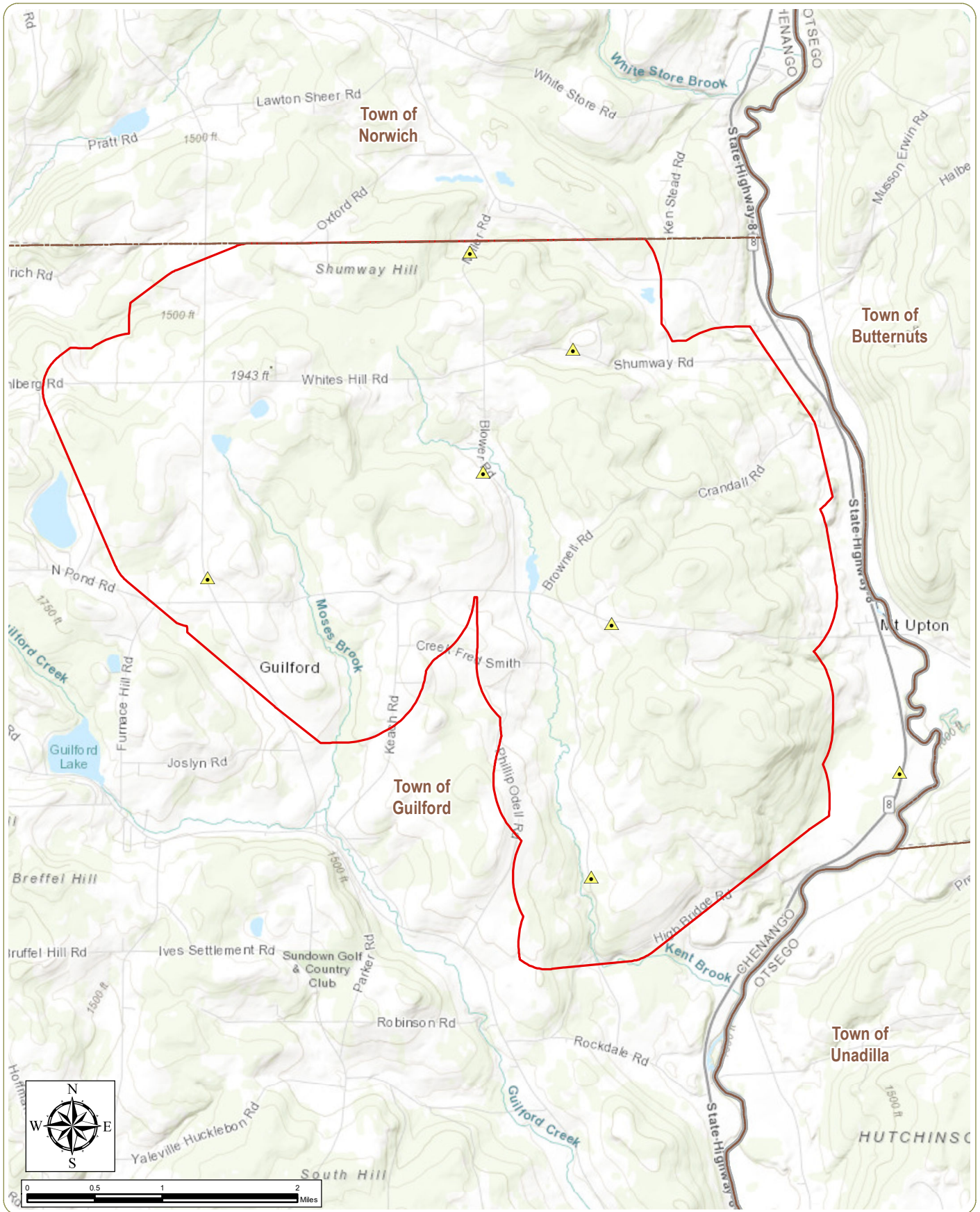
Figure 10: Sensitive Sites Sheet 4 of 4



- NRHP-Eligible Resources
- Public School
- Cemetery
- Hospital
- Tourist Information Kiosk
- Snowmobile Trail
- Finger Lakes Trail
- Trails on State Land
- Golf Course
- Local Recreation
- Federal Recreation
- NRHP-Listed Site
- NYSDEC Land
- Town Boundary
- County Boundary
- Visual Study Area (10-mile Boundary)
- Facility Site



Notes: 1. Basemap: ESRI ArcGIS Online "USA Topo Maps" map service.. 2. This map was generated in ArcMap on January 22, 2019. 3. This is a color graphic. Reproduction in grayscale may misrepresent the data.



High Bridge Wind Project
 Town of Guilford, Chenango County, New York
Preliminary Scoping Statement
Figure 11. Sound Monitoring Locations

Notes: 1. Basemap: "USGS TNM Topo Base Map" displayed via the USGS Topo Map Server. 2. This map was generated in ArcMap on January 23, 2019. 3. This is a color graphic. Reproduction in grayscale may misrepresent the data.

-  Sound Monitoring Location
-  Town Boundary
-  County Boundary
-  Facility Site

