



**NORTHLAND
POWER**

Long Lake Solar Project Water Body Environmental Impact Study

October 18, 2012



Northland Power Inc.
on behalf of
Northland Power Solar
Long Lake L.P.
Toronto, Ontario

Water Body
Environmental Impact Study

Long Lake Solar Project

H334844-0000-07-124-0300

Rev. 1

October 18, 2012

Disclaimer

This report has been prepared by or on behalf of Northland Power Inc. for submission to the Ontario Ministry of the Environment as part of the Renewable Energy Approval process. The content of this report is not intended for the use of, nor is it intended to be relied upon by, any other person. Neither Northland Power Inc. nor any of its directors, officers, employees, agents or consultants has any liability whatsoever for any loss, damage or injury suffered by any third party arising out of, or in connection with, their use of this report.

Project Report

October 18, 2012

**Northland Power Inc.
Long Lake Solar Project**

Water Body Environmental Impact Study

Table of Contents

1. Introduction	5
1.1 Renewable Energy Approval Legislative Requirements	5
1.1.1 Records Review Report	5
1.1.2 Site Investigation Report	5
1.1.3 Environmental Impact Study Report.....	6
1.2 Background Information on Waterbodies	9
1.3 Environmental Impact Study Format	9
2. Methodology	9
3. Project Components and Activities	10
3.1 Construction	10
3.2 Operation	11
3.3 Decommissioning	11
4. Potential Negative Environmental Effects and Proposed Mitigation Measures	12
4.1 Surface Water Runoff	12
4.1.1 Construction Phase.....	13
4.1.1.1 Land Grading and Ditching	13
4.1.1.2 Soil Compaction.....	14
4.1.1.3 Vegetation Removal	14
4.1.2 Operations Phase	15
4.1.2.1 Long-Term Changes in Land Grading and Ditches	15
4.1.2.2 Impervious or Less Pervious Surfaces.....	15
4.1.2.3 Changes in Vegetation.....	16
4.1.3 Decommissioning Phase	17
4.1.3.1 Long-Term Changes in Land Grading.....	17
4.1.3.2 Changes in Vegetation.....	17
4.2 Surface Water Quality	17
4.2.1 Construction Phase.....	17
4.2.1.1 Increased Erosion and Sedimentation.....	18
4.2.1.2 Dust Generation	19
4.2.1.3 Accidental Spills.....	20
4.2.1.4 Accidental Spills of Concrete.....	21
4.2.2 Operations Phase	21

4.2.2.1	Erosion and Sedimentation From the Project Area	22
4.2.2.2	Maintenance Activities	22
4.2.2.3	Accidental Spills	22
4.2.3	Decommissioning Phase	22
4.2.3.1	Erosion and Sedimentation	23
4.2.3.2	Accidental Spills	23
4.3	Groundwater	23
4.3.1	Construction Phase	23
4.3.1.1	Effects on Groundwater Due to Project Excavations	23
4.3.1.2	Accidental Spills	24
4.3.2	Operations Phase	24
4.3.2.1	Accidental Spills	24
4.3.3	Decommissioning Phase	24
4.4	Aquatic Biota and Habitat	25
5.	Environmental Effects Monitoring Requirements	25
6.	Construction Plan Report	29
7.	Summary and Conclusions	29
8.	References	30
Appendix A	Site Layout	

List of Tables

Table 3.1	General Description of Construction Activities (From Hatch Ltd., 2012d)	10
Table 5.1	Summary of Environmental Effects Monitoring Requirements with Respect to Waterbodies	27

List of Figures

Figure 1.1	Water Body Site Investigation Results	7
------------	---	---

Blank back

1. Introduction

Northland Power Solar Long Lake L.P. (hereinafter referred to as “Northland”) is proposing to develop a Class 3 10-megawatt (MW) ground mounted solar photovoltaic (Solar PV) facility in the unorganized Township of Calder. This Project, known as the Long Lake Solar Project, is hereafter referred to as “Long Lake” or the “Project.”

The Project location is approximately 123 hectares (ha) in size and located on Lots 2 and 3, in the unorganized Township of Calder. The Project location is situated on Clute, Concession Road 8 (shown in Figure 1.1).

As stated in Sections 39 and 40 of Ontario Regulation (O. Reg.) 359/09 *Renewable Energy Approvals Under Part V.0.1 of the Act*, (herein referred to as the “REA Regulation”), an Environmental Impact Study (EIS) is required for all waterbodies determined to be within a specified setback in order to obtain a Renewable Energy Approval (REA). The EIS identifies the potential negative environmental effects, documents the proposed mitigation measures, and describes the environmental effects monitoring plan for the waterbodies.

1.1 Renewable Energy Approval Legislative Requirements

Per Section 4 of the REA Regulation, ground-mounted solar facilities with a nameplate capacity greater than 12 kilowatts (kW) are classified as Class 3 solar facilities and require a REA.

The REA process requires the preparation of several reports with respect to waterbodies on and adjacent to the Project location, including the Records Review Report, Site Investigation Report and if necessary, the EIS. The legislative requirements for these reports are summarized in the following sections.

1.1.1 Records Review Report

Section 30 of the REA Regulation requires proponents of Class 3 solar projects to undertake a water body records review to identify “whether the project is

1. in a water body
2. within 120 m of the average annual high water mark of a lake, other than a lake trout lake that is at or above development capacity
3. within 300 m of the average annual high water mark of a lake trout lake that is at or above development capacity
4. within 120 m of the average annual high water mark of a permanent or intermittent stream, or
5. within 120 m of a seepage area.” (O. Reg. 359/09, s. 30, Table).

Subsection 30(2) of the REA Regulation requires the proponent to prepare a report “setting out a summary of the records searched and the results of the analysis” (O. Reg. 359/09). The Water Body Records Review Report (Hatch Ltd., 2012a) was prepared to meet these requirements.

1.1.2 Site Investigation Report

Section 31 of the REA Regulation requires proponents of Class 3 solar projects to undertake a water body site investigation for the purpose of determining

1. whether the results of the analysis summarized in the Water Body Records Review Report (Hatch Ltd., 2012a) prepared under Subsection 30(2) are correct or require correction, and identifying any required corrections
2. whether any additional waterbodies exist, other than those that were identified in the Water Body Records Review Report (Hatch Ltd., 2012a) prepared under Subsection 30(2)
3. the boundaries, located within 120 m of the project location, of any water body that was identified in the records review or the site investigation
4. the distance from the project location to the boundaries determined under Clause 3.

The Water Body Site Investigation Report (Hatch Ltd., 2012b) was prepared to meet these requirements.

1.1.3 Environmental Impact Study Report

Section 39(1) of the REA Regulation prohibits the construction, installation or expansion of any component of a solar project within the following locations:

- a lake or within 30 m of the average annual high water mark of a lake
- a permanent or intermittent stream or within 30 m of the average annual high water mark of a permanent or intermittent stream
- a seepage area or within 30 m of a seepage area.

However, Section 39(2) allows proponents to construct Project components other than solar panels or transformers (e.g., access roads or distribution lines) within the locations noted above, subject to the completion of an EIS to assess negative effects and required mitigation and monitoring measures.

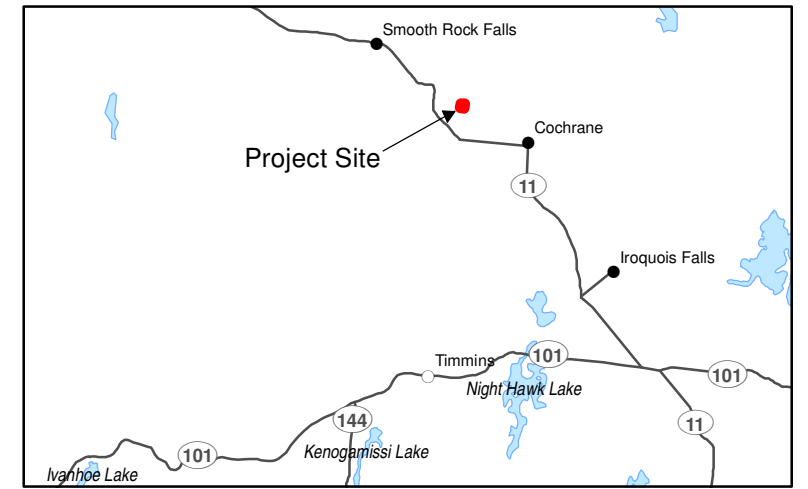
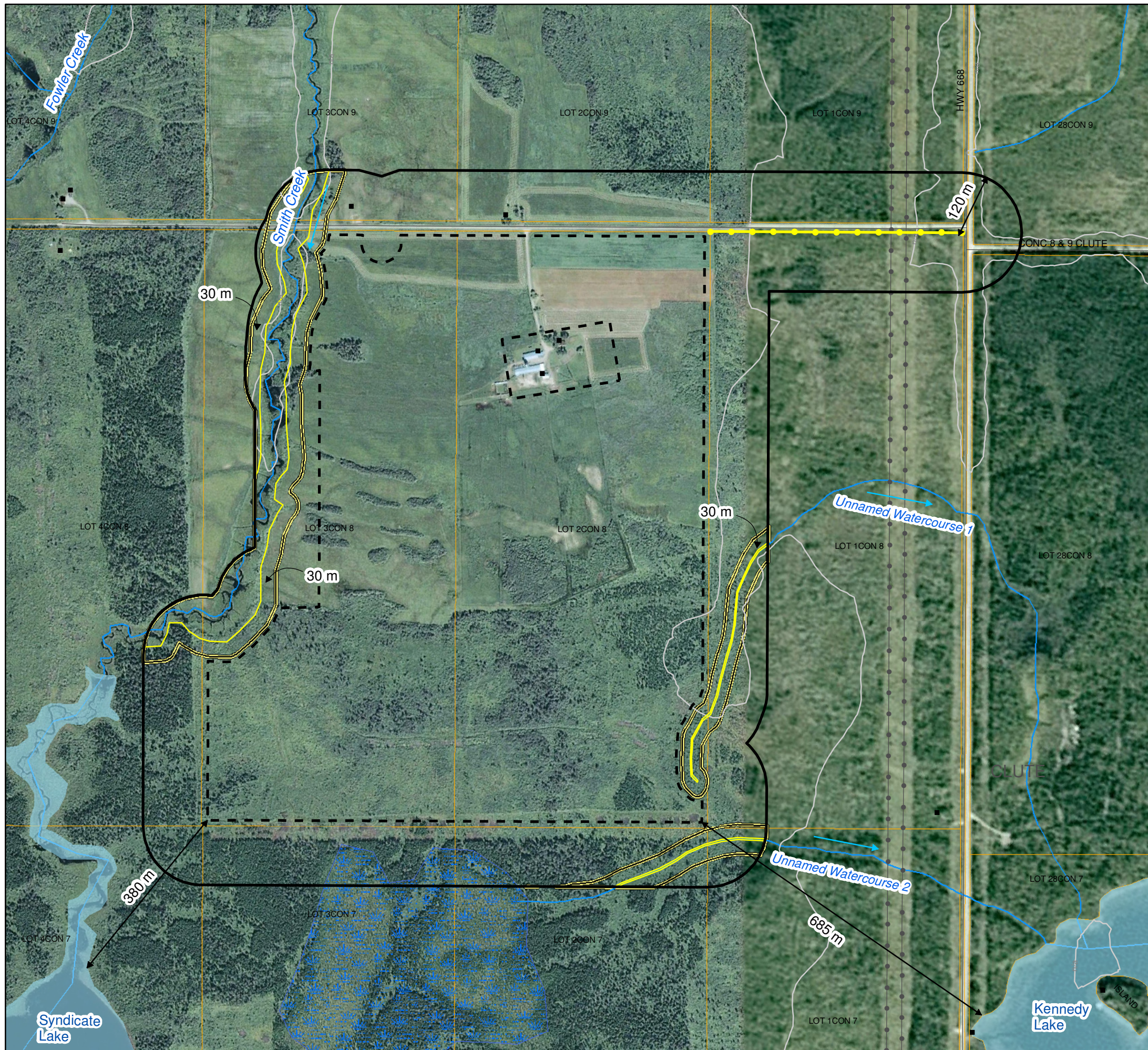
Section 40(1) of the REA Regulation prohibits construction, installation or expansion of any component of a solar project within the following locations:

- within 120 m of the average annual high water mark of a lake, other than a lake trout lake that is at or above development capacity
- within 300 m of the average annual high water mark of a lake trout lake that is at or above development capacity
- within 120 m of the high water mark of a permanent or intermittent stream
- within 120 m of a seepage area.

However, Section 40(2) allows proponents to construct Project components within the locations noted above, subject to the completion of an EIS.

Sections 39 and 40 of the REA Regulation indicate that the EIS report must

- identify and assess any negative environmental effects of the projects on the waterbodies and on land within 30 m of the water body
- identify mitigation measures in respect of any negative environmental effects



Legend

- Building
- Proposed Transmission Line
- Road
- Topographic Contour (5m interval)
- Watercourse
- 30 m from Average Annual High Water Mark
- Parcel
- Project Location
- 120 m from Project Location
- Waterbody
- Wetland Area

Notes:
 1. Produced by Hatch under licence from Ontario Ministry of Natural Resources, Copyright (c) Queens Printer 2011.
 2. Spatial referencing UTM NAD 83.
 3. Satellite imagery obtained from Google Earth Pro, captured 2004.
 4. Air photo obtained ... NOTE!

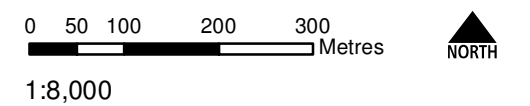


Figure 1.1
 Northland Power Inc.
Long Lake Solar Project
Water Body
Site Investigation Results



Blank back

- describe how the environmental effects monitoring plan in the Design and Operations Report (Hatch Ltd., 2012c) addresses any negative environmental effects
- describe how the Construction Plan Report (Hatch Ltd., 2012d) addresses any negative environmental effects.

This EIS has been prepared to address these requirements for the construction of Project components between 30 and 120 m from the waterbodies noted in the following section.

1.2 Background Information on Waterbodies

The Water Body Records Review Report (Hatch Ltd., 2012a) and Water Body Site Investigations Report (Hatch Ltd., 2012b) confirmed that the Project will be constructed between 30 and 120 m away from the average annual high water mark of Smith Creek (a tributary of Syndicate Lake) and two unnamed tributaries of Kennedy Lake (Unnamed Watercourse A and Unnamed Watercourse B). The average annual high water mark boundaries, as determined during the site investigation, and the proposed Project development area (i.e., the Project Location) are shown in Figure 1.1.

1.3 Environmental Impact Study Format

Section 1 of this EIS has identified the legislative requirements for an EIS under the REA Regulation and identified the reasons why an EIS is required for the Project. Section 2 summarizes the methodology that was used to prepare the EIS. Section 3 summarizes the activities associated with project construction, operation and decommissioning, as described in the Project Description Report (Hatch Ltd., 2012e). Section 4 identifies and assesses negative environmental effects and mitigation measures to prevent/minimize the potential effects. Section 5 describes the environmental effects monitoring plan from the Design and Operations Report (Hatch Ltd., 2012c) and Section 6 describes how the Construction Plan Report (Hatch Ltd., 2012d) addresses the potential negative environmental effects. Section 7 summarizes the results of the EIS. References are included in Section 8.

2. Methodology

The following steps outline the methodology that was used to prepare this EIS:

1. Documentation of Project components and activities during all Project phases, including construction, operations and decommissioning, and identification of temporal and spatial boundaries.
2. Background data collection on the waterbodies within 120 m of the Project location through the records review and site investigation processes.
3. Identification of the effects that are likely to occur on the environmental components as result of implementing the Project.
4. Development of mitigation measures to eliminate, alleviate or avoid the identified negative effects.
5. Design of an environmental effects monitoring program to confirm the predicted effects and the effectiveness of mitigation measures.

3. Project Components and Activities

The following sections briefly describe the construction, operation and decommissioning phases of the Project. The summary information is taken from the Project Description Report (Hatch Ltd., 2012e). More detailed information on the Project phases can be found in the Construction Plan Report (Hatch Ltd., 2012d), Design and Operations Report (Hatch Ltd., 2012c) and Decommissioning Plan Report (Hatch Ltd., 2012f). The Site Layout Plan from the Construction Plan Report is provided in Appendix A to show the detailed components of the facility, including solar panel, inverter, transformer and access road locations.

3.1 Construction

Construction is anticipated to occur over an approximately 6-month period, likely commencing in April 2013 with commissioning scheduled for late October 2013. The activities associated with construction are summarized in Table 3.1.

Table 3.1 General Description of Construction Activities (From Hatch Ltd., 2012d)

Activity	Description
Access Road Construction	Activities associated with construction of internal access roads will include <ul style="list-style-type: none"> • removal of topsoil and subsoil • placement of granular base (at least 30 cm) • installation of ditches and culverts • installation of sediment and erosion control features as necessary • replacement of topsoil on the temporary access roads if the roads are to be removed.
Site Preparation	Activities associated with the site preparation will include <ul style="list-style-type: none"> • consultation with the landowner to determine the locations of topsoil and subsoil stockpiles where topsoil is stripped. Note that the piles will not be within 30 m of waterbodies and drainage routes. • accumulation of uncut or shredded crops on the soil surface where topsoil is not stripped • removal of trees and shrubs as required [to occur, wherever possible, outside of breeding bird period (May through July)] • installation of sediment and erosion control features as necessary.
Installation of Support Structures	Activities associated with the installation of support structures will include <ul style="list-style-type: none"> • creation of drilled holes for the purposes of stabilizing the support structures of the solar arrays • construction of foundations and/or support structures beneath transformers, inverters and solar panels • installation of solar panels on fixed racking structures • inspection of foundation construction and of support structures prior to the installation of solar modules, and wiring.

Activity	Description
Underground Cable Installation	Activities associated with underground cable installation will include <ul style="list-style-type: none"> • installation of Direct Current (DC) wiring along the structural supports of the solar arrays. A network of underground DC cabling will be required at the termination point of the solar arrays to centrally located inverters which will then convert the electricity to alternating current (AC). • utilization of a simple trenching device to install the cables; whereby a slot will be opened, the cable will be laid, and the soil replaced.
Transmission Line Erection	Activities associated with transmission line erection will include <ul style="list-style-type: none"> • construction of an underground distribution line which transports the electricity from the inverters to the transformer • erection of a overhead transmission connection from the transformer to transport the generated power from the Project to the connection point • utilization of new or existing wooden poles.
Site Security	Activities associated with site security will include <ul style="list-style-type: none"> • installation of gate and fence. • installation of additional security measures (e.g., security cameras, motion sensor flood lighting) if deemed necessary.

3.2 Operation

The expected commercial operation date (COD) is October 2013. The facility will operate 365 d/yr when sufficient solar radiation exists to generate electricity. The facility will be remotely monitored with no regular on-site employees. Maintenance is anticipated to occur quarterly. Maintenance activities will involve checking the structures and interconnections and cleaning the photovoltaic panels, as necessary. Maintenance activities associated with maintaining the fence, if required, will be conducted from the Project side (i.e., within the fence). All maintenance materials such as hydraulic fluids, will be brought on site as required and no on-site storage will be made available. Rain and snowfall are anticipated to be sufficient for the cleaning of the panels. Should extra water be required it will be brought on site. The system does not produce waste of any type. All debris as a result of maintenance or cleaning will be removed from the site immediately by the contracted party. The Project will also be inspected whenever the power output is lower than anticipated as this would be indicative of a mechanical problem. The Project is expected to have a minimum lifespan of 20 years, the length of the Feed-in-Tariff (FIT) contract that has been obtained.

3.3 Decommissioning

Decommissioning would occur when the decision has been made that it is no longer economically feasible to continue operation or refurbish generating equipment. It is anticipated that decommissioning would not occur for at least 35 years unless a power purchase agreement cannot be secured after the 20-yr duration of the FIT contract that has been obtained.

All decommissioning and site restoration activities would adhere to the requirements of appropriate regulatory authorities and would be conducted in accordance with all applicable federal, provincial and municipal permits and other requirements. The decommissioning and restoration process comprises the following activities:

- removal of the fencing, scrap metal and cabling. Where possible, these materials will be recycled, with non-recyclables taken to an approved disposal site.
- removal of support structures and foundations unless the landowner requests otherwise. These materials will be recycled where possible.
- site cleanup and re-grading to original contours, and any damage to tile drainage system to be repaired/replaced.
- planting of leguminous crops to provide a rapid return of nutrients and soil structure.

Once the Project, other materials, and road network are removed from the site, and leguminous crops have been planted as identified above, the lands on the Project location will be used at the discretion of the landowner.

4. Potential Negative Environmental Effects and Proposed Mitigation Measures

This section describes the anticipated negative environmental effects on the watercourses and lands within 30 m that could occur as a result of construction, operation and decommissioning phases of the Project (as described in Section 3).

Potential negative effects are discussed under each environmental component associated with waterbodies and adjacent lands, where effects on the land could negatively affect the water body. Mitigation measures are proposed to minimize, eliminate or alleviate any negative effects. Relevant environmental components include

- surface water runoff (patterns and rates)
- surface water quality
- groundwater
- aquatic and riparian habitat and biota.

4.1 Surface Water Runoff

Surface water runoff occurs when snow melts and/or precipitation hits the ground and runs along the surface of the land, typically toward a watercourse or other stormwater conveyance feature.

Descriptors of runoff can include the pattern that runoff takes en route to its discharge to water features (i.e., the overland runoff routes) and the rate at which runoff leaves the land (e.g., the volume of runoff per unit area per unit time, such as $m^3/m^2/minute$).

Surface water runoff can interact with a number of other environmental components and biophysical processes occurring on land and in water. Examples include

- recharge of groundwater supplies due to infiltration into the land
- uptake of water by vegetation (either through the roots or by interception of precipitation on the plant)
- erosion of land due to changes in runoff patterns or rates

- alterations in watercourse hydrology
 - ◆ higher peak flows if surface water runoff rates increase (e.g., if more water leaves the land and enters the watercourse) or lower peak flows if runoff rates decrease (e.g., if more water infiltrates the land and is taken up by vegetation)
 - ◆ alterations in the rate of change in watercourse flows (e.g., flows increase at a higher rate if water runs off the land faster) including increase in ‘flashiness’ of watercourses
- alterations in watercourse geomorphology (e.g., channel conditions) due to changes in flows or water levels resulting in changes in sediment transport (bed and bank erosion or sediment deposition).

Surface water runoff can potentially be affected by a number of activities, including

- changes in land topography
- changes in infiltration to the land
- changes in vegetation surface water uptake via interception or in-ground uptake.

4.1.1 Construction Phase

Activities that could occur during the construction phase that would have the potential to affect surface water runoff patterns and rates include

- land grading and ditching
- soil compaction due to heavy equipment or stockpiling
- vegetation removal.

The potential negative effects and mitigation measures associated with these activities are discussed in the following sections.

4.1.1.1 Land Grading and Ditching

No major grading works are anticipated to be required to install solar panels throughout the majority of the Project location. Minor, localized soil grading may be required in some panel installation areas (if necessary) and for temporary laydown areas, inverter/transformer pads and access roads. This minor grading may locally alter runoff patterns compared to the existing diffuse runoff from the existing field. Any minor grading will take into consideration the current land grade and will try to replicate the present stormwater flow pattern. However, the size of the graded area will be very small relative to the size of the Project location, so no measurable effect on surface water runoff is anticipated to occur as a result of this grading.

Drainage features including ditching and cross culverts will be required to maintain site drainage across the access roads traversing the Project location (cross-culvert locations are shown on the Site Plan in Appendix A). Existing drainage is predominantly away from the main access road through the centre of the Project location, so only minimal drainage would enter ditching along these access roads. Therefore, these drainage features may serve to concentrate a minimal amount site runoff at discharge points, which, depending on site layout, will consist of areas adjacent to undisturbed agricultural fields or the roadside ditch network. Given the minimal amount of surface water runoff

anticipated to enter the ditch network, potential effects on surface water runoff at discharge locations are anticipated to be minimal, although some minor increase in runoff rates and flow vectors may occur.

In order to mitigate any potential negative effects, Northland is proposing to undertake a number of measures including the following.

- Runoff in the ditches will be slowed through the use of rock flow check dams and/or hay bales to promote minor ponding and water retention, as well as sedimentation to reduce turbidity in ditches.
- Ditches will be grassed to the extent possible to further retain water (via uptake in vegetation) and also reduce erosion potential.

The mitigation noted above will prevent negative effects on waterbodies.

4.1.1.2 *Soil Compaction*

Soil compaction may result from the use of heavy equipment (e.g., tracked bulldozers and backhoes), and stockpiling of heavy materials (e.g., soils). Soil compaction occurs when heavy equipment or material causes the soil particles to be pushed together, thereby increasing soil density and reducing the pore space within the soil structure (DeJong-Hughes et al, 2001). Excessive soil compaction can result in inhibited water infiltration due to decreased pore space within the soil structure (DeJong-Hughes et al, 2001). Decreased water infiltration into the soil could also potentially result in an increase in surface runoff.

Prior to site rehabilitation, disturbed areas will be visually monitored to assess if compaction has occurred, as noted by rutting or flattened areas beneath stockpile locations. Restoration efforts (e.g., discing or other soil loosening methods) will be undertaken as required to prevent long-term impacts due to excessive amounts of compaction. Soil compaction will likely occur in localized areas within the zone of disturbance during the short-term construction period. However, no significant long-term change in soil structure is anticipated following implementation of site restoration and associated mitigation to remediate significantly compacted areas, although minor amounts of compaction may persist in localized areas.

Therefore, no measurable change in surface water runoff is anticipated to occur due to minor, localized soil compaction occurring during the construction phase.

4.1.1.3 *Vegetation Removal*

The Project location currently consists of hayfields, white tailed deer pasture, and a woodland on and within 120 m of the Project location (see Figure 1.1). During construction, woody vegetation (shrubs and trees) within the woodland will be cleared within the Project location. All existing ground cover will be left in place in areas where no grading works are required. Removal of trees and shrubs will likely result in a minor increase in the rate and quantity of runoff from these areas of the Project location (due to less interception by the trees and shrubs). However, runoff from the wooded areas currently enters the swamp south of the Project location and this will continue to occur. Given the relatively small surface area that will be affected by vegetation removal and the minor increase in runoff volumes and rates due to tree removal, This minor increase in the volume of surface water runoff to the swamp is not anticipated to have any negative effect on the swamp.

No vegetation removal will be required within the 30 m setback adjacent to any of the waterbodies on or within 120 m of the Project location during the construction period. Therefore, this vegetation will remain undisturbed during construction and will continue to provide stormwater management control functions including slowing the velocity of surface water runoff and interception of precipitation and uptake in plants and roots. This will also assist in mitigating overall changes in surface water runoff from the Project location.

4.1.2 Operations Phase

Long-term site alterations associated with the operational phase of the Project that could potentially affect surface water runoff include

- long-term changes in land grading and ditches
- presence of impervious or less pervious surfaces
- changes in vegetation structure and density and periodic vegetation maintenance.

The potential negative effects and mitigation measures associated with these activities are discussed in the following sections.

4.1.2.1 Long-Term Changes in Land Grading and Ditches

As discussed in Section 4.1.1.1, the ditches and drainage conveyance features installed during the construction period will remain in place throughout the operations period. Mitigation measures also discussed in Section 4.1.1.1 (e.g., vegetated buffers adjacent to watercourses, flow retention features in ditches) will also remain in place for the duration of the operations phase. These measures are anticipated to be effective in preventing localized changes in surface water runoff from impacting the waterbodies adjacent to the Project location. Maintenance on these features will be undertaken as required.

4.1.2.2 Impervious or Less Pervious Surfaces

Inverter/Transformer Pads

Each of the inverter concrete pads and the main station transformer pad will be an impervious surface that will not allow infiltration of surface water into the soil. Surface precipitation landing on the pads will immediately run off to the adjacent ground surface. Therefore, the runoff from the area of the pad will be higher than would normally occur for the existing fields, since there will be no infiltration. However, the size of these impervious areas will be negligible compared to the overall size of the Project location. Once the runoff from the pad area enters the adjacent field areas, it will be subject to similar uptake, infiltration and retention properties as currently exist. Therefore, no overall effect on surface water runoff from the Project location is anticipated to occur as a result of these small concrete pads.

Solar Panels

Each of the solar panels will also be an impervious surface. Due to the tilt of the solar panels, all precipitation landing on the panel surface will run off the lower edge of the panel onto the ground. Therefore, discharge from each individual panel to the ground surface will be concentrated at the base of each panel. However, given that rows of panels will be separated from each other, panels effectively function as temporary interceptors of precipitation with only minor concentration of precipitation at the point where water runs off their surface. Once the water reaches the ground surface, there will be no impacts on surface drainage due to the presence of the panel and water will

either infiltrate the soil, be temporarily ponded in depressions, be taken up by vegetation or travel over land in surface drainage routes as per the existing drainage patterns. Therefore, the impervious panels will not have any effects on overall surface drainage (rate and quantity) from the Project location. Erosion potential is discussed in Section 4.2.2.1.

Access Roads

Access road surfaces, which will be comprised of granular material, may be less pervious than the existing fields. Therefore, more surface runoff per unit area may occur on the access roads compared to the existing conditions. This runoff will likely enter the ditches lining the access roads and drain towards the road side ditches. However, the mitigation noted in Section 4.1.1.1 will be sufficient to prevent any significant long-term effects due to this minor change in local runoff.

Parking Area

The long-term parking area will consist of granular materials, but permeability and associated infiltration capacity may be less than the existing fields in this location. Therefore, it is anticipated that a slightly higher rate of runoff will occur from the parking area compared to existing conditions. Runoff from the parking area will diffuse into the surrounding fields or into the roadside ditch; therefore, it is anticipated that any additional runoff due to the parking area will infiltrate or be otherwise retained through vegetation uptake. Therefore, no adverse effects on the hydrology of the waterbodies within 120 m of the Project location is anticipated to occur due to the less pervious parking area.

4.1.2.3 *Changes in Vegetation*

As noted in Section 4.1.1.3, existing vegetation on the Project location consists of hayfield, pasture and woodland. Areas in and around the solar panel arrays and within all area disturbed during construction will be planted with a low-growing, native ground cover of various grasses and forbs, which will comprise the long-term vegetation community on the site. Some change in the stormwater retention function of the Project location may occur due to removal of shrubs and trees in the woodland, which may intercept slightly more precipitation and decrease overland flow, but this is anticipated to be negligible. However, the long-term ground cover will be dense vegetation mix with similar stormwater management functions as the existing groundcover throughout the area. Therefore, stormwater runoff rates throughout the operational period are anticipated to remain similar to existing conditions since vegetation will remain similar. Therefore, no adverse effects on surface water runoff from the Project location is anticipated to occur due to long-term changes in vegetation community on the Project location.

Vegetation within the 30-m setback adjacent to Smith Creek will be allowed to grow naturally with no long-term management intervention, except where the area currently consists of hay. The areas with area will be periodically mowed to keep them in Hay. However, this mowing will not have any overall effect on the buffering function of the vegetation communities within the 30-m setback zone adjacent to Smith Creek. Project components will be located greater than 30 m away from the tributaries of Kennedy Lake (Unnamed Watercourse 1 and Unnamed Watercourse 2), and given that these waterbodies are located within the woodland, no change in stormwater management functions is anticipated.

4.1.3 Decommissioning Phase

Short-term activities and long-term site alterations associated with the decommissioning of the Project that could potentially affect surface water runoff include

- long-term changes in land grading
- changes in vegetation structure and density.

The potential negative effects and mitigation measures associated with these activities are discussed in the following sections.

4.1.3.1 Long-Term Changes in Land Grading

The decommissioning process will revert the Project location as close as possible back to the existing conditions or the condition desired by the landowner. For the purposes of this EIS, it has been assumed that fields will be restored to hay production and used as a white-tailed deer pasture. Access roads and ditches will be removed and grading will be conducted to restore the natural grades of the fields where they have been affected by Project features.

This is anticipated to restore existing surface water runoff patterns over the long term, with no negative effects on surface water runoff compared to existing conditions.

4.1.3.2 Changes in Vegetation

Decommissioning will result in the rehabilitation of the land to existing conditions with restoration of the fields to hay production. Rehabilitation of the existing vegetation on the site is not anticipated to have any adverse effects on surface water runoff.

4.2 Surface Water Quality

Surface water quality includes both the physical characteristics of the watercourse and any overland flow (e.g., clarity, turbidity, pH, temperature) and chemical characteristics (e.g., dissolved oxygen, metals, nutrients and other potentially hazardous contaminants). Surface water quality affects a number of other natural environmental components and biophysical processes in watercourses, including receiving waterbodies that can be located substantial distances from the water body where the initial change was effected. This includes

- adverse effects on aquatic biota (e.g., fish and benthic invertebrates)
- adverse effects on aquatic habitat (e.g., due to deposition of sediment from turbid water).

4.2.1 Construction Phase

Activities that could occur during the construction phase that would have the potential to affect surface water quality in ditches and nearby watercourses include

- increased erosion and sedimentation
- dust generation
- accidental spills of fuels
- accidental spills of concrete.

The potential negative effects and mitigation measures associated with these activities are discussed in the following sections.

4.2.1.1 *Increased Erosion and Sedimentation*

Disturbance of the Project location due to vegetation clearing, topsoil and subsoil stripping (if necessary), grading, use of heavy machinery, stockpiling and concentration of flow in drainage features (e.g., ditches) has the potential to increase soil erosion due to exposure of bare soil (not protected by vegetation) to the effects of surface water (e.g., rain, overland flow due to rain/snow melt). Erosion is defined as the process where individual soil particles are detached from the ground, whereas sedimentation is defined as the subsequent transport (by wind or water) and deposition of the detached soil particles. Erosion and sedimentation have the potential to affect surface water quality by resulting in higher levels of turbidity and possibly contaminants associated with the soil surface (e.g., pesticides due to previous agricultural activities) in receiving waterbodies.

In order to mitigate this potential, a conceptual erosion and sediment control (ESC) plan is proposed below which should be supplemented by an ESC drawing prepared by the proponent's engineer or contractor. Additional information on the sediment and erosion control plan is also provided in the Construction Plan Report (Hatch Ltd., 2012d).

Preventing erosion from occurring in the first place is the primary goal of the ESC plan and measures such as proper construction phasing, minimizing the size and duration of soil disturbance and exposure and revegetating or stabilization as soon as possible after disturbance are all identified as effective erosion control measures. Sediment control measures are the last line of defence and are implemented to ensure that eroded soil particles are not transported off the Project location or to watercourses. Sediment control measures include measures such as silt fence barriers to trap and retain sediments.

The main mitigation measures that will form the basis for the ESC plan will include the following:

- Minimize the size of the cleared and disturbed areas at the construction site. Install limit of work devices to prevent the contractor from operating outside the defined construction area (e.g., silt fences at the edge of the 30-m setback around the watercourses).
- Existing ground cover vegetation will be left on site, to the extent possible to minimize exposure of bare soils.
- Phase construction to minimize the time that soils are exposed.
- Limit vegetation removal to areas within the development footprint and solar panel buffer requirements. Limit of work devices should be installed outside the drip line of residual trees, where possible to prevent damage.
- An adequate supply of erosion control devices (e.g., geotextiles, revegetation materials) and sediment control devices (e.g., silt fence barriers) to be provided on site to control erosion and sedimentation and respond to unexpected events.
- Sediment control fencing may be installed along the periphery of the Project location where there is the potential for sedimentation off site and at the edge of the 30-m buffer area adjacent to the tributaries adjacent to the Project location as one of the first construction activities. These silt fence barriers should remain in place until construction is complete and site vegetation, and other long-term protection measures, are stabilized and adequate to prevent further erosion.

- Divert runoff from the temporary and permanent access roads or laydown areas through vegetated areas or into a properly designed and constructed drainage collection system to ensure that exposed soils are not eroded. Runoff velocities in ditches or other drainage routes, or along slopes, to be kept low via proper installation of flow velocity control measures such as enhanced vegetated swales or check dams, to minimize erosion potential. Runoff discharge locations to be protected with erosion resistant material, if required.
- Grade stockpiles to a stable angle as soon as possible after disturbance to eliminate potential slumping. Revegetation (if during the growing season) or some other means of stabilization (e.g., tarping) should occur for any disturbed surface that is to be left exposed for longer than 30 days.
- Revegetate or stabilize exposed sites as soon as possible after they have been disturbed, using quick growing grasses or other native vegetation species. Where revegetation is not possible, other erosion protection methods such as erosion matting may be used.
- Excavated erodible material stockpiles to be placed in suitable designated areas away from waterbodies (i.e., outside the 30-m buffer adjacent to waterbodies, away from drainage channels) and properly constructed silt fence barriers should be installed around the stockpiles to limit the transport of sediment.

Implementation of these mitigation measures is anticipated to be effective in minimizing soil erosion and off-site transport from the construction area, such that waterbodies are not negatively affected. Monitoring will be conducted throughout the construction period to ensure ESC measures are functioning as designed (see Section 5).

4.2.1.2 *Dust Generation*

Dust may be mobilized due to vehicular traffic and heavy machinery use, drilling and blasting (if necessary, although not anticipated) and soil moving activities. If unmitigated, excessive dust levels could adversely impact surface water quality and aquatic habitat if it were to be deposited in waterbodies.

However, it is not anticipated that dust generation will be a significant problem since the potential impacts can be substantially mitigated through the use of standard construction site best management practices and mitigation measures. In this regard, the document entitled "Best Practices for the Reduction of Air Emissions from Construction and Demolition Activities" (Cheminfo Services Inc., 2005) will be used as a guideline for contractors. Mitigation measures to be used, as required, to control dust include

- use of approved dust suppression (i.e., water or non-chloride based materials) on exposed areas including access roads, stockpiles and works/laydown areas as necessary
- hard surfacing (addition of coarse granular A material free of fine soil particles) of access roads or other high-traffic working areas
- phased construction, where possible, to limit the amount of time soils are exposed
- avoid earth-moving works during excessively windy weather. Stockpiles to be worked (e.g., loaded/unloaded) from the downwind side to minimize wind erosion.

- stockpiles and other disturbed areas to be stabilized as necessary (e.g., tarped, mulched, graded, revegetated or watered to create a hard surface crust) to reduce/prevent erosion and escape of fugitive dust.

Visual monitoring of dust generation will occur during the construction period and if dust is observed to be of concern, additional mitigation will be implemented. Given the mitigation and monitoring proposed, it is anticipated that dust generation will be relatively low in magnitude and limited in duration and geographical area, such that no negative effects on waterbodies occur as a result of dust.

4.2.1.3 *Accidental Spills*

Fuels, lubricants and other hazardous materials will be used on the construction site. Activities during the construction phase that could potentially result in transport of these materials to the watercourse, with subsequent negative impacts on water quality, include

- refuelling and maintenance
- use of equipment containing fuels, lubricants or other materials within, or in the vicinity of watercourse
- storage of hazardous materials.

There are a number of general mitigation practices to be followed by the contractor during construction to minimize the potential for negative environmental impacts associated with the scenarios above which could be caused by the storage, use and disposal of fuels, lubricants and other hazardous materials. These include the following:

- Establish designated refuelling and maintenance areas at least 30 m from waterbodies, drainage ditches, channels or other wet areas.
- Locate designated hazardous material storage areas at least 30 m away from waterbodies, for all hazardous materials to be stored outside. Storage areas should be above ground and enclosed by an impervious secondary containment structure (e.g., berm or container) capable of holding the entire volume of the stored material, as well as some additional volume of rainwater. The area should be equipped with a drain so that it can be cleared of any spilled material or accumulated rainwater, which would be disposed of in a suitable manner. Secondary containment areas should be monitored throughout the construction period to ensure their integrity.
- A barrier will be erected around the storage area to prevent accidental damage to containers.
- Machinery is to arrive on site in a clean condition and is to be maintained free of fluid leaks.
- An emergency spill kit will be kept on site in case of fluid leaks or spills from machinery.
- Provide adequate spill clean-up materials/equipment (e.g., absorbents) on site. The contractor must have a spill clean-up procedure/emergency contingency plan in place prior to commencement of work at the site. All site staff should be trained in implementation of the procedure.

Given this mitigation, no adverse effects on surface water quality due to use of fuels, lubricants and other hazardous materials during Project construction is anticipated to occur.

4.2.1.4 *Accidental Spills of Concrete*

Concrete will be used to construct the inverter and transformer pads and, depending on soil strength conditions, may also be used as ballast for the solar panel racking. Concrete will be brought on site by a ready-mix concrete supplier in concrete trucks and poured directly into the form for each transformer/inverter pad. If concrete ballast is required for the panel racking structures, it would likely consist of pre-fabricated structures brought to the site. No cement is anticipated to be stored or mixed on site.

Concrete, grout and associated materials (e.g., cement, mortars) typically have high pH values (i.e., highly basic or alkaline), which, if they enter a watercourse, could create adverse surface water quality conditions that are toxic to aquatic biota (Province of British Columbia, 2007).

Although the use of concrete during Project construction is relatively limited and will not occur within 30 m of any water body, mitigation measures are proposed to prevent negative effects. Therefore, in order to mitigate potential adverse effects due to concrete and cement use, the following mitigation measures are to be implemented:

- No alkaline cement products will be deposited directly or indirectly into or adjacent to any watercourse.
- Concrete truck rinsing will occur at a designated area at least 120 m from any waterbodies or drainage routes in a manner to contain the rinse water and concrete residue to prevent off-site transport.
- No cement is anticipated to be stored on site. However, if some cement bag storage is required, bags are to be stored indoors, where possible. If outdoor storage is required, cement bags should be covered with waterproof sheeting and raised off the ground (e.g., on wooden palates) to ensure no contact with surface water runoff. Impervious material will be placed under the elevating mechanism to collect any spills (e.g., due to ripped bags). Empty cement bags are to be collected as soon as possible after use and spills of cement or concrete cleaned up as appropriate.

Given this mitigation, no negative effects on surface water quality due to use of concrete during construction is anticipated to occur.

4.2.2 **Operations Phase**

Long-term site alterations associated with the operations phase that would have the potential to affect surface quality in nearby watercourses include

- erosion and sedimentation from the Project area
- maintenance activities such as panel cleaning
- accidental spills.

The potential negative effects and mitigation measures associated with these activities are discussed in the following sections.

4.2.2.1 *Erosion and Sedimentation From the Project Area*

Given the mitigation associated with long-term stormwater management on the site as discussed in Section 4.1.2, no erosion is anticipated to occur throughout the operations period. Precipitation running off each solar panel face will be concentrated at the point where it intercepts the ground surface and, therefore, could potentially have more erosive force than normal diffuse precipitation patterns. However, the dense ground cover vegetation beneath the solar panels will be sufficient to prevent erosion of the underlying soils due to this concentrated impact. Precipitation will then drain from the site in a similar manner as presently occurs. Therefore, no erosion is anticipated due to runoff from the solar panels.

General site monitoring will be conducted during the general site inspections throughout the life of the Project to determine if erosion is occurring on or adjacent to the site, including in the runoff area from the panels. Remediation would be undertaken as necessary to prevent any further erosion.

Given this mitigation and monitoring, no erosion and sedimentation and therefore no adverse effects on surface water quality are anticipated to occur during the operations period.

4.2.2.2 *Maintenance Activities*

As noted in Section 3.2, normal maintenance activities will include inspection of components and panel washing, if rainfall and snow are not sufficient to prevent dust build-up on the panel faces. Normal maintenance and inspection are not anticipated to have any negative effects on waterbodies. If extra water is required to be brought on site for panel cleaning purpose, it is anticipated that volumes will be relatively low and less than that which would occur during a normal precipitation event. No cleaning agents (e.g., detergents) will be used to clean panels. Therefore, no adverse effects on surface water quality are anticipated to occur due to maintenance activities.

4.2.2.3 *Accidental Spills*

Use of fuels, lubricants and other potentially hazardous materials during the operations phase will be limited to those materials brought on site during periodic maintenance activities. This would include fuel and other lubricants in maintenance vehicles that are used to maintain the solar facilities. All maintenance vehicles will be equipped with a spill kit and a spill contingency and response plan will be in place for the duration of the operational period. Given this mitigation, and the limited quantity of material on site and the limited frequency and duration that it will be on site, no adverse effects due to accidental spills are anticipated to occur.

The main transformer will contain a small volume of transformer oil that could potentially be transferred to waterbodies in the event of a leak. In order to mitigate this potential, a containment structure will be installed around the transformer. Therefore, in the event of a leak, spilled fluid will be contained within the concrete pad surrounding the transformer. It would then be removed and disposed of in accordance with regulatory requirements. More details on the proposed containment system are provided in the Design and Operations Report (Hatch Ltd., 2012c). No adverse effects on surface water are anticipated to occur due to presence of transformer oils on site.

4.2.3 *Decommissioning Phase*

Short-term activities and long-term site alterations associated with the decommissioning phase that would have the potential to affect surface quality in nearby watercourses include

- increased erosion and sedimentation from the facility
- accidental spills during decommissioning.

The potential negative effects and mitigation measures associated with these activities are discussed in the following sections.

4.2.3.1 *Erosion and Sedimentation*

Standard construction site erosion and sedimentation control measures will be installed during the decommissioning process, since heavy equipment may be needed, which will result in some vegetation and ground disturbance and therefore, exposure of bare soil. However, decommissioning is anticipated to be a relatively quick process with minimal amounts of ground disturbance required to remove panels and other features. Once the field is returned to its existing agricultural condition, erosion rates will be similar to existing conditions. Therefore, given the mitigation that will be implemented during decommissioning and the fact that the site will be restored to existing agricultural conditions, no negative effects on water quality are anticipated to occur as a result of sediment and erosion during decommissioning.

4.2.3.2 *Accidental Spills*

Equipment associated with the decommissioning process could potentially result in accidental spills and/or leaks. The mitigation noted in Section 4.2.1.3 for use during the construction process, would also be implemented during the decommissioning process. It is anticipated that this mitigation will be effective in preventing spills and minimizing the magnitude and extent of any small spills that do occur. Therefore, no adverse effects on surface water quality are anticipated to occur due to small leaks or spills during decommissioning.

4.3 **Groundwater**

Groundwater will likely be present in the subsoils underneath the site at various depths throughout the year. Groundwater is important to a number of natural environment components since it may provide base flow to watercourses, which in turn supports aquatic biota and habitat.

Impacts on groundwater could potentially occur due to excavations below the groundwater table (e.g., for transformer pad footings) or accidental spills during construction, operations or decommissioning. Those potential effects and associated mitigation are discussed by Project phase in the following sections.

Given the mitigation proposed in Section 4.1 to prevent any changes in soil structure that may affect infiltration (e.g., compaction), the Project is not anticipated to have any effect on groundwater recharge that may occur during precipitation or snow melt events.

4.3.1 **Construction Phase**

During construction, groundwater could potentially be affected by any project excavation if it is deep enough to intersect the groundwater table. Groundwater quality could also be affected by any spills that infiltrate the soil and enter the groundwater table. Potential negative effects and proposed mitigation measures are discussed in the following sections.

4.3.1.1 *Effects on Groundwater Due to Project Excavations*

The only project excavation anticipated to be potentially deep enough to intersect the groundwater table and where dewatering could potentially be required would be the excavations for transformer/

inverter pads. Should these excavations intersect the groundwater table, some pumping of groundwater may be required to keep the excavation area dry to facilitate construction and such pumping could potentially result in localized decrease in groundwater levels.

Any groundwater entering project excavations, as well as any accumulated precipitation, is to be pumped out of the excavated area, treated, if required to meet the Ministry of the Environment (MOE) water quality discharge criteria, and discharged to a vegetated buffer area.

Given the very small size of the excavations required for transformer/inverter pads and the limited duration that they will be exposed (2 weeks or less), it is not anticipated that pumping of groundwater at these sites will have any significant effect on the local groundwater table.

4.3.1.2 *Accidental Spills*

Mitigation proposed in Section 4.2.1.3 is anticipated to be effective in minimizing the potential for accidental spills and in the event of a spill, minimizing the magnitude of that spill. Accordingly, it is not anticipated that spills would be large enough to have any noticeable effect on groundwater supplies. However, if spills do occur, the spill response and contingency plan protocol will be implemented and this will involve notifying the MOE Spills Action Centre. If the spill is determined to have the potential to impact groundwater, remedial measures will be taken, such as excavating the soil that was contaminated by the spill, in order to prevent infiltration of contaminants into the groundwater table.

4.3.2 **Operations Phase**

During the operations phase, the only potential effect on groundwater would be due to accidental spills associated with maintenance activities and the presence of transformer oil.

4.3.2.1 *Accidental Spills*

Mitigation proposed in Section 4.2.2.3 is anticipated to be effective in minimizing the potential for accidental spills and in the event of a spill, minimizing the magnitude of that spill. Accordingly, it is not anticipated that spills would be large enough to have any noticeable effect on groundwater supplies. However, if spills do occur, the spill response and contingency plan protocol will be implemented and this will involve notifying the MOE Spills Action Centre. If the spill is determined to have the potential to impact groundwater, remedial measures will be taken, such as excavating the soil that was contaminated by the spill, in order to prevent infiltration of contaminants into the groundwater table.

A secondary containment structure will be installed around the main station transformer to contain transformer oils in the event of a leak. This will prevent transfer of these materials to nearby watercourses or the soil/groundwater.

4.3.3 **Decommissioning Phase**

Similarly, the only potential effect on groundwater during decommissioning would be due to accidental spills associated with decommissioning equipment (e.g., spills or leaks during equipment dismantling or from heavy equipment, vehicles or generators). However, given the mitigation proposed and the small volume of fluids that will actually be used on site, no negative effects on groundwater quality are anticipated to occur as a result of small accidental spills that may occur.

4.4 Aquatic Biota and Habitat

Aquatic biota (e.g., fish and benthic invertebrates) and their habitat in the waterbodies will not be directly affected by any Project component, since none of these will occur within 30 m of the average annual high water mark of the waterbodies and in some cases, this buffer width is substantially greater.

Aquatic biota and habitat could potentially be indirectly affected if changes in surface water runoff, surface water quality and groundwater quality or quantity were to occur as a result of any phase of the Project. However, the mitigation proposed in Sections 4.1, 4.2 and 4.3 is anticipated to be effective in preventing/minimizing negative effects associated with these other biophysical components of the environment, such that there are no adverse effects on aquatic biota and habitat within the tributaries. Given this, no specific mitigation measures, other than those noted in the above-mentioned sections, are required to prevent adverse effects to aquatic biota and habitat.

5. Environmental Effects Monitoring Requirements

As discussed in the Design and Operations Report (Hatch Ltd., 2012c), environmental effects monitoring is proposed in respect of any negative environmental effects that may result from engaging in the Project. As per the REA Regulation, the monitoring plan identifies

- performance objectives in respect of the negative environmental effects
- mitigation measures to assist in achieving the performance objectives
- a program for monitoring negative environmental effects for the duration of the time the Project is engaged in, including a contingency plan to be implemented if any mitigation measures fail.

For the purposes of this EIS report, the environmental effects monitoring measures with respect to negative effects on waterbodies and lands within 30 m of waterbodies have been reproduced here, in Table 5.1.

The monitoring proposed in Table 5.1 will serve to verify if mitigation measures are functioning as designed to meet performance objectives. If monitoring shows that performance objectives are not being met, the contingency measures documented in Table 5.1 will be used to ensure that remedial action is undertaken as necessary to meet the performance objectives.

Blank back

Table 5.1 Summary of Environmental Effects Monitoring Requirements with Respect to Waterbodies

Negative Effect	Mitigation Strategy	Performance Objective	Monitoring Plan				Contingency Measures	
			Methodology	Monitoring Locations	Frequency	Rationale		Reporting Requirements
Construction Phase								
Increases in surface water runoff from the construction site	Stormwater management measures including grassed swales, enhanced vegetated swales, ditch flow controls, and temporary construction measures as necessary (e.g., hay bales).	Minimize changes to surface water runoff conditions to drains.	Visual assessment of structural stability of mitigation measures and identification of unintended impacts.	Throughout construction site.	Once per week and during/ after storm events.	Visual monitoring will confirm that stormwater management measures remain as designed (e.g., rock flow check dams, straw bale flow checks, ditches, etc) and identify deficiencies.	Reported in monthly environmental monitoring report during construction.	Stormwater management measures will be remediated as necessary to ensure that they are functioning as designed. Alternate measures may be required and will be determined based on on-site issues and conditions.
Soil compaction due to heavy equipment use and stockpiling	Remediation of compaction following construction.	No significant compaction that would inhibit vegetative growth.	Visual monitoring for signs of compaction.	Throughout construction site.	Once after remediation.	Visual monitoring will identify areas requiring remediation.	At close-out of project.	Areas of compaction will be remediated as necessary to alleviate compaction (e.g., discing).
Erosion and sedimentation resulting in increased turbidity in site runoff	Erosion and sediment control measures.	No significant changes to surface water quality in watercourse.	Visual monitoring of sediment and erosion controls (e.g., silt fence barriers).	All ESC controls throughout work site.	Once per week and in advance and following major precipitation.	ESC measures to be monitored to ensure they are functioning as designed and in good working order to meet performance objectives.	Reported in monthly environmental monitoring report during construction.	Alternate ESC measures will be used as necessary to ensure required control.
Dust generation and off-site transport	Standard construction site best management practices to prevent fugitive dust (see Section 4.2.1.2).	Minimize fugitive dust from the construction site.	Visual monitoring of visible dust plumes during construction.	Throughout construction site.	Periodically during all construction activities.	Visual dust monitoring would identify if dust plumes are an issue and where their source may be.	Reported in monthly environmental monitoring report during construction.	Alternative dust control measures will be implemented as necessary to prevent/minimize dust generation.
Potential for adverse surface water and ground water quality due to accidental spills	Standard mitigation to prevent spills and minimize magnitude of spills that do occur (see Section 4.2.1.3).	No long-term environment effects due to spills.	Visual monitoring of spill prevention/mitigation measures.	Throughout construction site.	Once per week.	Spill prevent and control measures to be monitored to ensure they are functioning as designed and protocols are being implemented as specified in plans to meet performance objectives.	Reported in monthly environmental monitoring report during construction.	Spill contingency measures will be implemented as necessary in the event of a spill. Following spill event, response will be reviewed to determine if additional or altered response protocols are necessary to meet performance objectives.
Operations Phase								
Increases in surface water runoff from Project location	Stormwater management measures including grassed swales, and enhanced vegetated swales.	Minimize changes to surface water runoff conditions to drains.	Visual assessment of structural stability of mitigation measures and identification of unintended impacts.	Throughout Project location.	Twice per year during site inspections.	Visual monitoring will confirm that stormwater management measures are effective and identify deficiencies.	Reported in annual operational environmental monitoring report.	Stormwater management measures will be remediated as necessary to ensure that they are functioning as designed.
Erosion and sedimentation resulting in increased turbidity in site runoff	Vegetation to prevent erosion due to stormwater.	No long-term erosion from site over and above existing conditions.	Visual monitoring of Project area to identify areas of erosion (e.g., rills, gullies).	Throughout Project location.	Twice per year during site inspections.	Visual monitoring of erosion would identify potential areas of concern.	Reported in annual operational environmental monitoring report.	Erosion remediated as necessary to ensure no long erosion issues.
Potential for adverse surface water and ground water quality due to accidental spills	Standard mitigation to prevent spills and minimize magnitude of spills that do occur.	No long-term environment effects due to spills.	Visual monitoring of spill prevention/mitigation measures during maintenance activities.	Throughout Project location where maintenance occurs and at transformer locations.	Twice per year during site inspections.	Spill prevent and control measures to be monitored to ensure they are functioning as designed and protocols are being implemented as specified in plans to meet performance objectives.	Reported in annual operational environmental monitoring report.	Spill contingency measures will be implemented as necessary in the event of a spill. Following spill event, response will be reviewed to determine if additional or altered response protocols are necessary to meet performance objectives.
Decommissioning Phase								
Erosion and sedimentation resulting in increased turbidity in site runoff	Erosion and sediment control measures.	No significant changes to surface water quality in drains.	Visual monitoring of sediment and erosion controls (e.g., silt fence barriers).	All ESC controls throughout work site.	Once per week and in advance and following major precipitation and snow melt events.	ESC measures to be monitored to ensure they are functioning as designed and in good working order to meet performance objectives.	Reported in monthly environmental monitoring report during construction.	Alternate ESC measures will be used as necessary to ensure required control.

Negative Effect	Mitigation Strategy	Performance Objective	Monitoring Plan				Contingency Measures	
			Methodology	Monitoring Locations	Frequency	Rationale		Reporting Requirements
Potential for adverse surface water and ground water quality due to accidental spills	Standard mitigation to prevent spills and minimize magnitude of spills that do occur.	No long-term environment effects due to spills.	Visual monitoring of spill prevention/mitigation measures.	Throughout construction site.	Once per week.	Spill prevent and control measures to be monitored to ensure they are functioning as designed and protocols are being implemented as specified in plans to meet performance objectives.	Reported in environmental monitoring report during decommissioning.	Spill contingency measures will be implemented as necessary in the event of a spill. Following spill event, response will be reviewed to determine if additional or altered response protocols are necessary to meet performance objectives.

6. Construction Plan Report

The REA Regulation requires proponents of Class 3 solar projects to prepare a Construction Plan Report (CPR). The CPR is a stand-alone report (Hatch Ltd., 2012d) that will be included as part of the REA application.

The CPR details the construction and installation activities, location and timing of construction and installation activities, any negative environmental effects that result from construction activities within 300 m of the Project and mitigation measures for the identified negative environmental effects. The CPR addresses all potential effects of construction on waterbodies within 300 m of the Project location in a general manner. The mitigation proposed in the CPR with respect to preventing/ minimizing negative effects on waterbodies is the same as that was discussed in this EIS. Additional mitigation is proposed to address negative effects during construction not related to waterbodies and associated features. Therefore, the CPR and this EIS should be read in conjunction with each other, although all negative effects and mitigation requirements with respect to waterbodies are contained within this EIS and duplicated in the CPR.

7. Summary and Conclusions

As discussed in the Water Body Records Review Report (Hatch Ltd., 2012a) and Water Body Site Investigations Report (Hatch Ltd., 2012b), some components of the Project will be located within 30 to 120 m of Smiths Creek and Unnamed Watercourses 1 and 2, both of which are tributaries of Kennedy Lake.

This EIS has been prepared to identify potential negative effects that all phases of the Project may have on this water body and lands within 30 m of the average annual high water mark. Potential negative effects are associated with

- alterations in surface water runoff due to
 - ◆ changes in topography associated with land grading and ditching
 - ◆ soil compaction during construction
 - ◆ changes in vegetation structure and density
 - ◆ increase in impervious and less pervious surfaces
- alterations in surface water quality due to
 - ◆ erosion and sediment from Project location
 - ◆ dust generation during construction
 - ◆ accidental spills during construction, operations and decommissioning
 - ◆ use of concrete during construction

- alterations in groundwater levels and quality due to
 - ◆ project excavations below the groundwater table during construction
 - ◆ accidental spills during construction, operations and decommissioning
- adverse effects on aquatic biota and habitat due to
 - ◆ indirect effects due to alterations in other environmental components and biophysical processes.

Mitigation measures have been proposed to prevent these effects from occurring or minimize the magnitude, extent, duration and frequency in the event that they do occur. The primary mitigation measure that will prevent adverse effects on the water body is adherence to the 30-m setback requirement. Monitoring measures have been proposed to confirm that mitigation measures are having the intended effect and that performance objectives are being met.

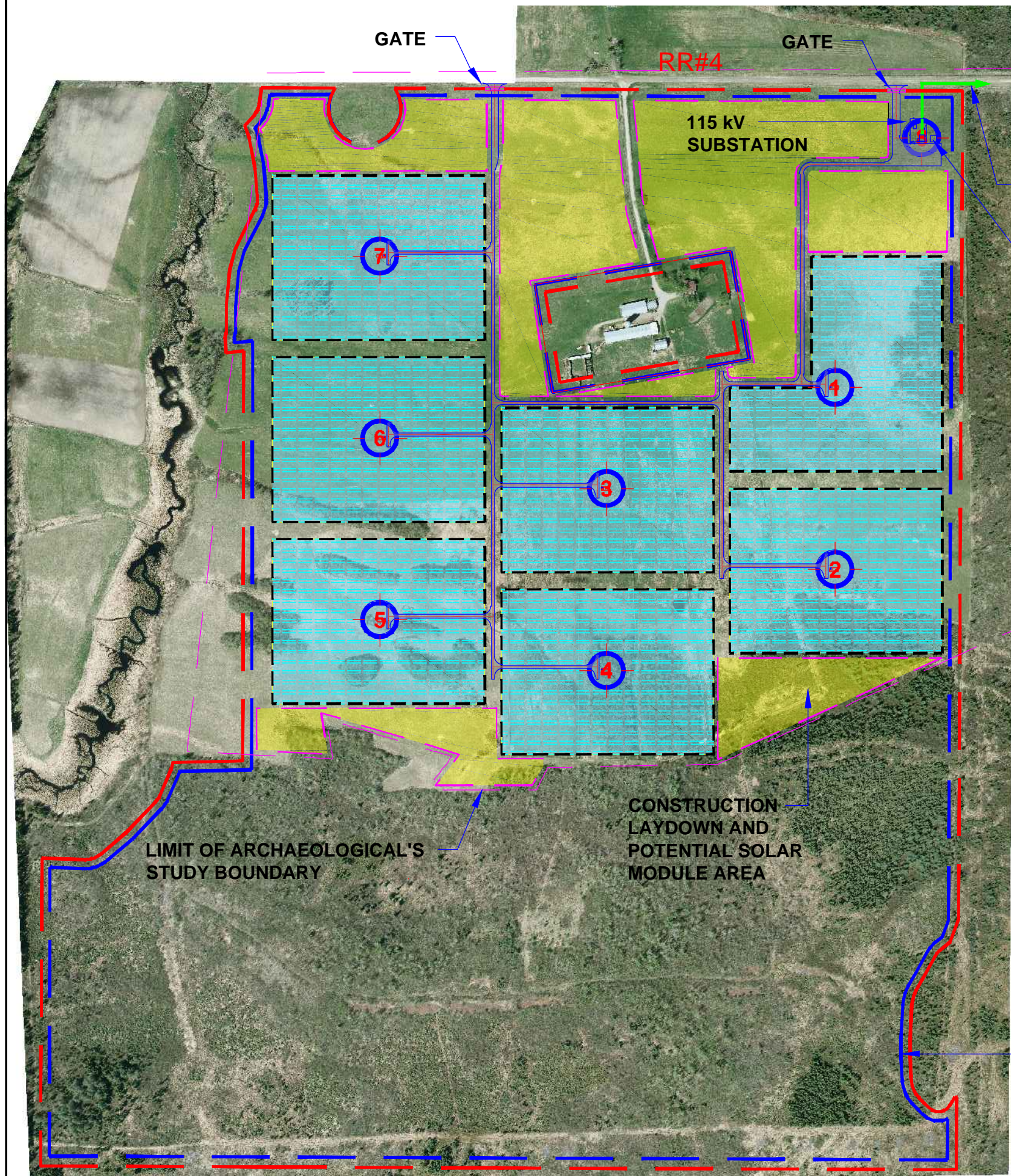
Overall, while the Project will result in some changes to the natural environment, no negative effects on the waterbodies are anticipated to occur following implementation of the mitigation and monitoring measures proposed in this EIS.

8. References

- Cheminfo Services Inc. 2005. Best Practices for the Reduction of Air Emissions From Construction and Demolition Activities. Prepared for Environment Canada. March 2005. 49 pp.
- DeJong-Hughes, J., J. F. Moncreif, W. B. Vorhees, and J. B. Swan. 2001. Soil Compaction Causes, Effects and Control. Regents of the University of Minnesota. Available on-line at <http://www.extension.umn.edu/distribution/cropsystems/DC3115.html>. Accessed November 28, 2007.
- Hatch Ltd. 2012a. Long Lake Solar Project – Water Body Records Review Report. Prepared for Northland Power Inc.
- Hatch Ltd. 2012b. Long Lake Solar Project – Water Body Site Investigation Report. Prepared for Northland Power Inc.
- Hatch Ltd. 2012c. Long Lake Solar Project – Design and Operations Report. Prepared for Northland Power Inc.
- Hatch Ltd. 2012d. Long Lake Solar Project – Construction Plan Report. Prepared for Northland Power Inc.
- Hatch Ltd. 2012e. Long Lake Solar Project – Project Description Report. Prepared for Northland Power Inc.
- Hatch Ltd. 2012f. Long Lake Solar Project – Decommissioning Plan Report. Prepared for Northland Power Inc.
- Province of British Columbia. 2007. Interim Standards and Best Practices for Instream Work, Appendix IV: Concrete Work. On-line at <http://www.env.gov.bc.ca/wld/BMP/concrete.html>. Accessed February 20, 2009.

Appendix A

Site Layout









TO 115 kV CONNECTION POINT
 APROX. 875 METERS
 (49.145303, -81.274923)

115 kV
 O.H. LINE

MAINTENANCE
 BUILDING

LEGEND:

-  GRAVEL ACCESS ROAD
-  OVERHEAD 115 kV LINE
-  PROPERTY BOUNDARY / FENCE LINE
-  AVAILABLE AREA BOUNDARY
-  CONSTRUCTION LAYDOWN AND POTENTIAL SOLAR MODULES AREA
-  INVERTER'S TRANSFORMER & SUBSTATION'S TRANSFORMER

INVERTER'S TRANSFORMER (UTM Co-ordinate)		
17 U	X (m E)	Y (m N)
P1	479487.24	5443342.60
P2	479487.24	5443141.00
P3	479233.84	5443230.60
P4	479233.84	5443029.00
P5	478982.46	5443085.00
P6	478982.46	5443286.60
P7	478982.46	5443488.20

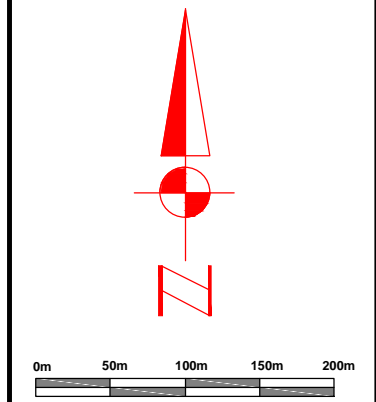
115 kV SUBSTATIONS TRANSFORMER (UTM Co-ordinate)		
17 U	X (m E)	Y (m N)
P8	479583.51	5443619.44

LIMIT OF ARCHAEOLOGICAL'S
 STUDY BOUNDARY

CONSTRUCTION
 LAYDOWN AND
 POTENTIAL SOLAR
 MODULE AREA

AVAILABLE AREA
 BOUNDARY

REVISIONS			
NO	DATE	SYMBOL	REMARKS
P0	MAY 2012		ISSUED FOR NOISE MODELING



STAMP	
-------	--

THIS DRAWING IS THE PROPERTY OF COGENERATION Associates Limited AND IS LOANED UPON CONDITION THAT IS NOT TO BE REPRODUCED OR COPIED IN WHOLE OR IN PART, OR USED FOR FURNISHING INFORMATION TO OTHERS, OR FOR ANY OTHER PURPOSE DETRIMENTAL TO THE INTEREST OF COGENERATION Associates Limited, AND WILL BE RETURNED UPON REQUEST



PROJECT
**NORTHLAND POWER SOLAR
 LONG LAKE**

DRAWN BY	TIEN PHAM	VERIFIED BY	
SCALE	N.T.S.	VERIFIED BY	
DATE	MAY 2012	APPROVED BY	
ISSUED FOR TENDER			

TITLE
**SOLAR FARM PROJECT
 SITE PLAN**
 DRAWING No. **SP-01 (LONG LAKE)** Rev.P0

**PRELIMINARY LAYOUT
 NOT FOR CONSTRUCTION**

