

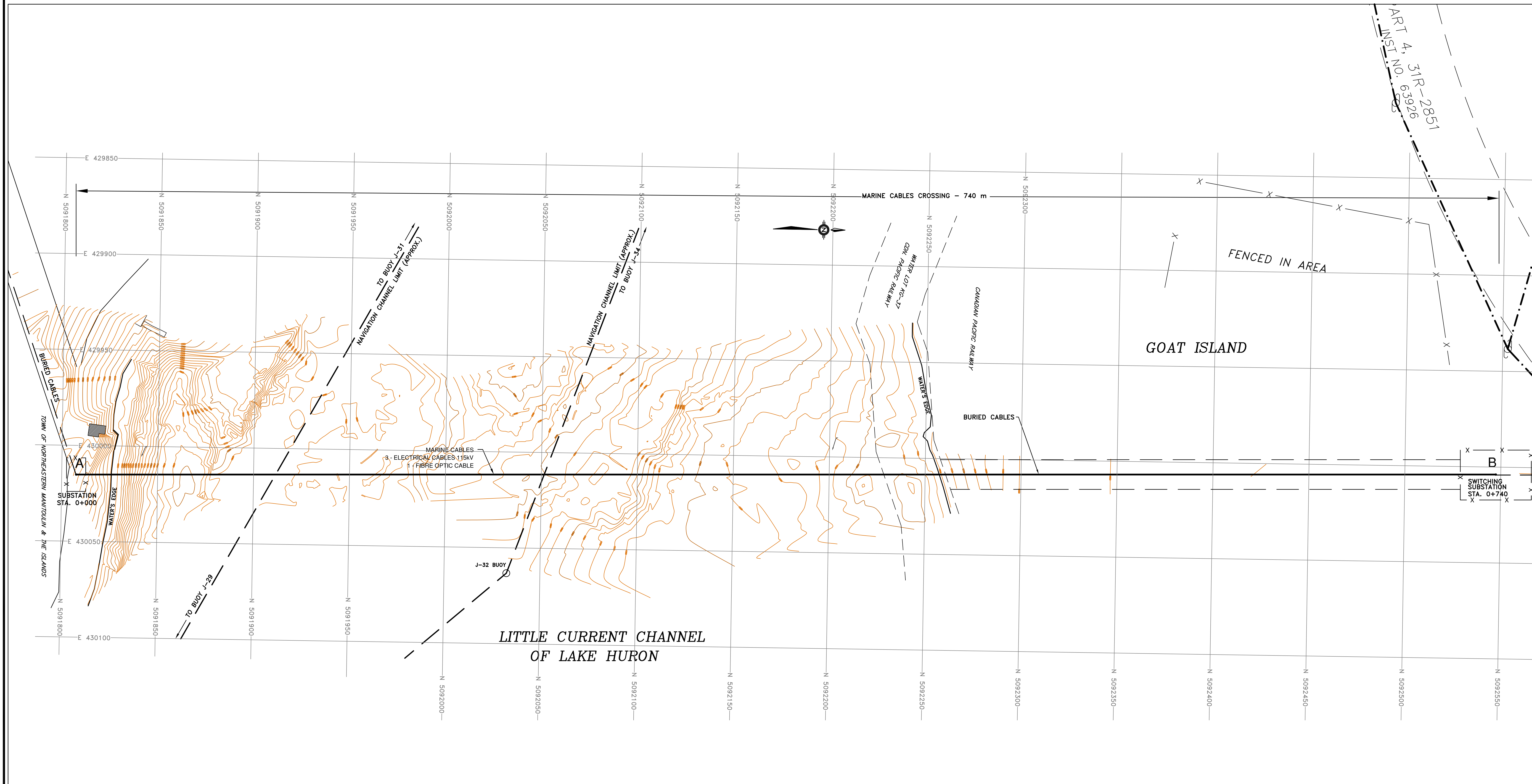
McLean's Mountain Wind Limited Partnership

Exhibit E

Tab 1

Schedule 4

DESIGN SPECIFICATIONS AND OPERATIONAL DATA: SUBMARINE CABLE
GENERAL PLAN AND PROFILE



NOTES :

1. HORIZONTAL COORDINATES SHOWN HEREON ARE BASED ON NAD 83 UTM COORDINATE SYSTEM.
2. ELEVATIONS, SOUNDINGS AND CONTOURS SHOWN HEREON ARE RELATED TO I.G.L.D. 1985 CHART DATUM (176.0 m).
3. SITE SURVEY CONDUCTED ON JUNE 24-25, 2009 BY KEATLEY SURVEYING LTD.
4. NAVIGATION CHART No. 2207 PRODUCED BY CDN HYDROGRAPHIC SERVICES APPLIES TO CROSSING SITE.
5. TOPOGRAPHIC O.B.M. MAP No. 20 17 4200 50900 AND No. 20 17 4300 50900 APPLIES TO CROSSING SITE.

COORDINATES			
PT	NORTHING	EASTING	LONG
A	5091807.83	430014.80	81°-54'-12" W
B	5092547.42	430003.87	81°-54'-13" W

GENERAL NOTES
 THIS DOCUMENT HAS BEEN PREPARED BASED IN PART UPON INFORMATION FURNISHED BY OTHERS. CONSULTANT CANNOT ASSURE THE ACCURACY OF INFORMATION BY OTHERS AND THIS IS NOT RESPONSIBLE FOR THE ACCURACY OF THIS DOCUMENT, OR FOR ANY ERROR OR OMISSION THAT MAY HAVE BEEN INCORPORATED INTO IT AS A RESULT. THOSE RELYING ON THIS DOCUMENT ARE ADVISED TO OBTAIN INDEPENDENT VERIFICATION OF ITS ACCURACY BEFORE APPLYING IT FOR ANY PURPOSE.

DRAFT

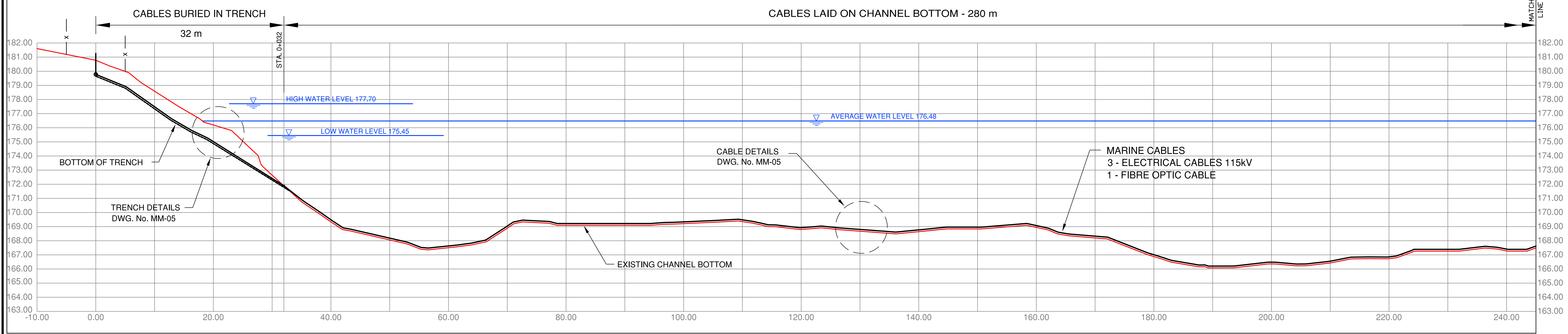
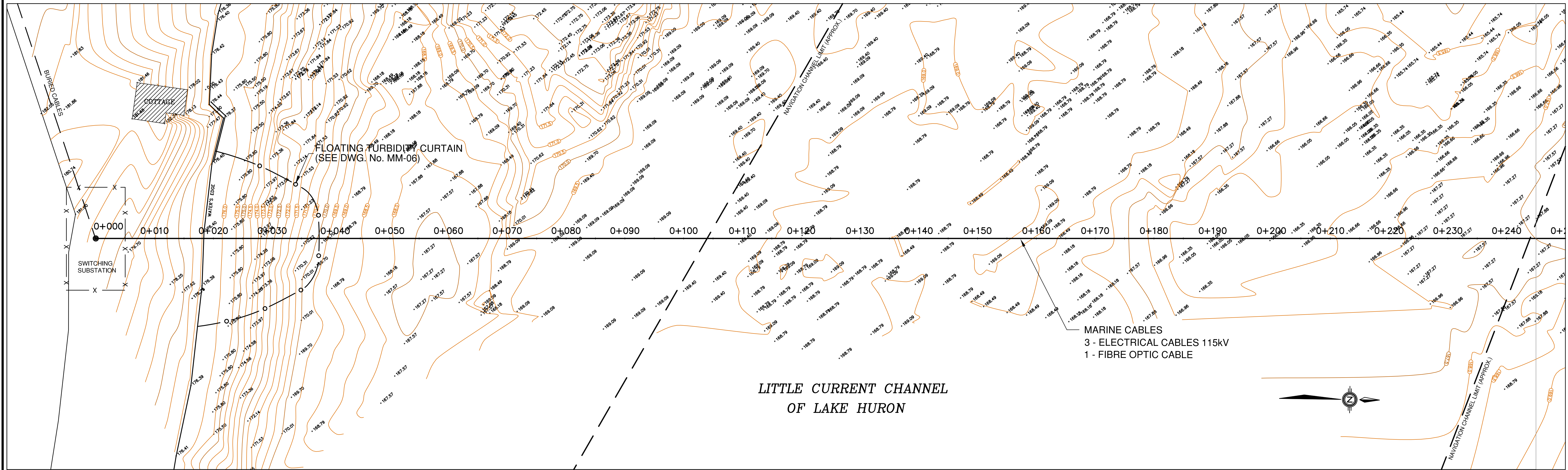
CONSULTANT:	WHITE H.B. WHITE CANADA CORP.		
MARINE CONSULTANT:	C.B. FAIRN & ASSOCIATES LTD.		
NO.	REVISIONS	DATE	APPROVED
	ISSUED FOR PERMIT	MAR 2010	
	ISSUED FOR COMMENTS	JUL 2011	

**McLEAN'S MOUNTAIN WIND FARM
 MARINE CABLE CROSSING**

GENERAL PLAN

**NORTHLAND
 POWER INC.**

SCALE HOR. 1:600	VERT. ---	DRAWING No. MM-01
DESIGN C.B.F.	DRAWN P.J.P.	REV. No.
REVIEWED C.B.F.	DATE JULY 2011	



STATION	GROUND ELEVATION	CABLES INVERT	BOTTOM OF TRENCH (approximate)
0+000	180.8	179.8	179.7
0+010	178.7	177.5	177.4
0+020	176.2	175.0	174.9
0+030	172.7	172.4	172.4
0+032	172.4	172.4	172.4
0+040	169.3	169.3	169.3
0+050	168.0	168.0	168.0
0+060	167.5	167.5	167.5
0+070	169.0	169.0	169.0
0+080	169.1	169.1	169.1
0+090	169.1	169.1	169.1
0+100	169.2	169.2	169.2
0+110	169.4	169.4	169.4
0+120	168.9	168.9	168.9
0+130	168.7	168.7	168.7
0+140	168.6	168.6	168.6
0+150	169.0	169.0	169.0
0+160	169.0	169.0	169.0
0+170	168.2	168.2	168.2
0+180	166.9	166.9	166.9
0+190	166.1	166.1	166.1
0+200	166.3	166.3	166.3
0+210	166.4	166.4	166.4
0+220	166.8	166.8	166.8
0+230	167.3	167.3	167.3
0+240	167.3	167.3	167.3
0+250			

GENERAL NOTES

THIS DOCUMENT HAS BEEN PREPARED BASED IN PART UPON INFORMATION FURNISHED BY OTHERS. CONSULTANT CANNOT ASSURE THE ACCURACY OF INFORMATION BY OTHERS AND THIS IS NOT RESPONSIBLE FOR THE ACCURACY OF THIS DOCUMENT, OR FOR ANY ERROR OR OMISSION THAT MAY HAVE BEEN INCORPORATED INTO IT AS A RESULT. THOSE RELYING ON THIS DOCUMENT ARE ADVISED TO OBTAIN INDEPENDENT VERIFICATION OF ITS ACCURACY BEFORE APPLYING IT FOR ANY PURPOSE.

DRAFT

CONSULTANT:
WHITE
H.B. WHITE CANADA CORP.

MARINE CONSULTANT:
C.B. FAIRN & ASSOCIATES LTD.

NO.	REVISIONS	DATE	APPROVED
1	ISSUED FOR PERMIT	MAR 2010	
2	ISSUED FOR COMMENTS	JUL 2011	

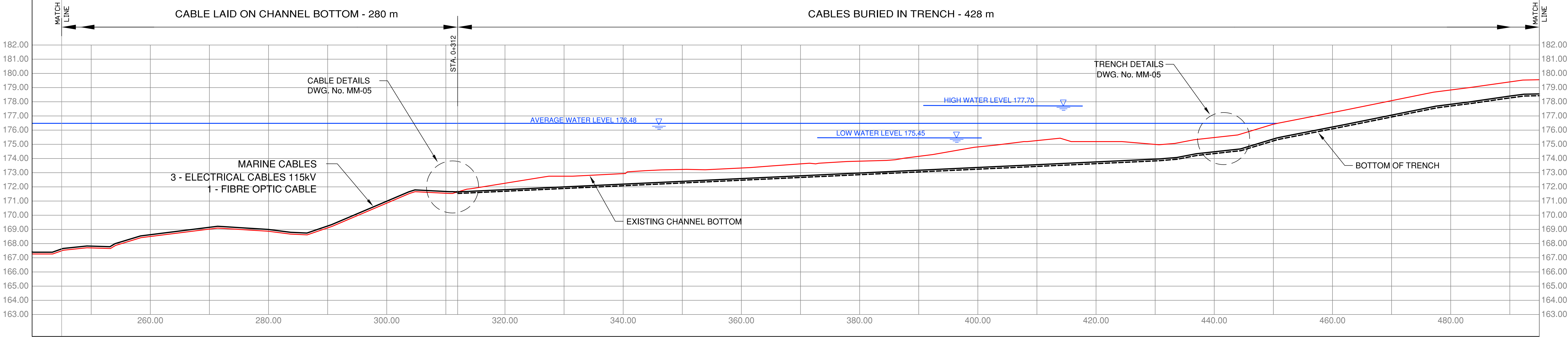
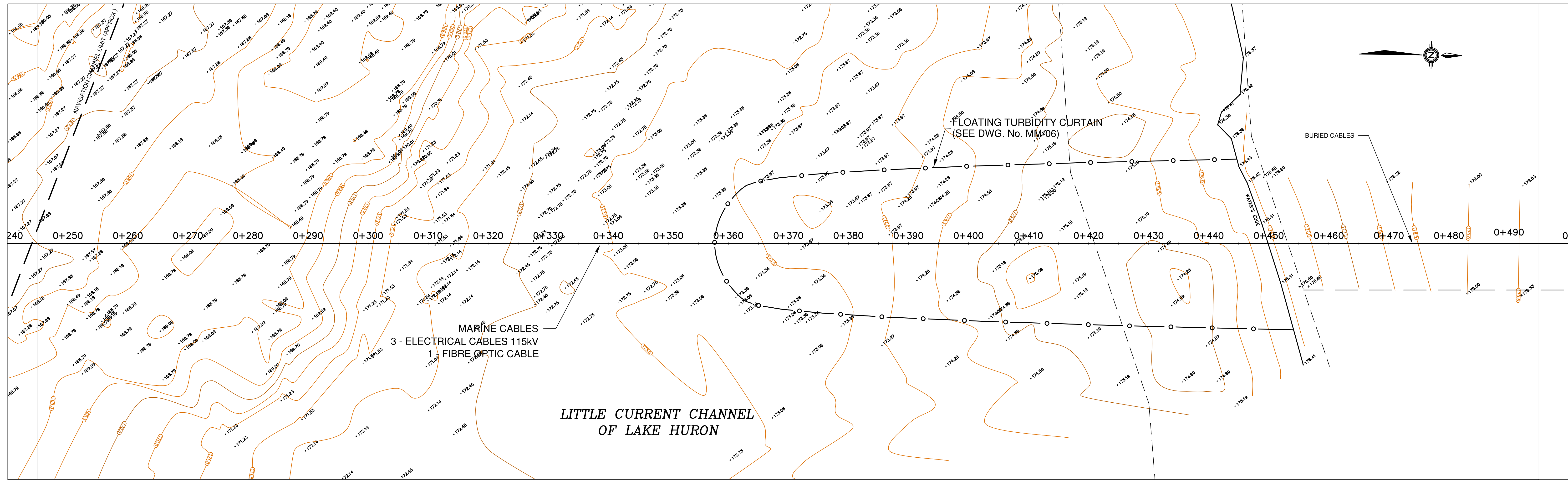
McLEAN'S MOUNTAIN WIND FARM
MARINE CABLE CROSSING

PLAN AND PROFILE
STA. 0+000 TO STA. 0+250

NORTHLAND POWER INC.

SCALE HOR. 1:300 VERT. 1:125
DESIGN C.B.F. DRAWN P.J.P.
REVIEWED C.B.F. DATE JULY 2011

DRAWING No. **MM-02**
REV. No.



STATION	GROUND ELEVATION	CABLES INVERT	BOTTOM OF TRENCH (approximate)
0+250	167.7	167.7	167.7
0+260	168.5	168.5	168.5
0+270	169.0	169.0	169.0
0+280	168.9	168.9	168.9
0+290	169.1	169.1	169.1
0+300	170.8	170.8	170.8
0+310	171.5	171.5	171.5
0+312	171.5	171.5	171.5
0+320	171.3	171.3	171.2
0+330	171.7	171.7	171.6
0+340	172.0	172.0	171.9
0+350	172.3	172.3	172.2
0+360	173.3	173.3	172.2
0+370	173.6	173.6	173.5
0+380	173.8	173.8	173.5
0+390	174.2	174.2	173.6
0+400	174.8	174.8	173.7
0+410	175.3	175.3	173.8
0+420	175.2	175.2	173.8
0+430	175.0	175.0	173.9
0+440	175.5	175.5	174.4
0+450	176.4	176.4	175.3
0+460	177.3	177.3	176.2
0+470	178.1	178.1	177.0
0+480	178.8	178.8	177.7
0+490	179.4	179.4	178.3
0+500			

GENERAL NOTES

THIS DOCUMENT HAS BEEN PREPARED BASED IN PART UPON INFORMATION FURNISHED BY OTHERS. CONSULTANT CANNOT ASSURE THE ACCURACY OF INFORMATION BY OTHERS AND THIS IS NOT RESPONSIBLE FOR THE ACCURACY OF THIS DOCUMENT, OR FOR ANY ERROR OR OMISSION THAT MAY HAVE BEEN INCORPORATED INTO IT AS A RESULT. THOSE RELYING ON THIS DOCUMENT ARE ADVISED TO OBTAIN INDEPENDENT VERIFICATION OF ITS ACCURACY BEFORE APPLYING IT FOR ANY PURPOSE.

DRAFT

CONSULTANT:
WHITE H.B. WHITE CANADA CORP.
 MARINE CONSULTANT:
C.B. FAIRN & ASSOCIATES LTD.

NO.	REVISIONS	DATE	APPROVED
1	ISSUED FOR PERMIT	MAR 2010	
2	ISSUED FOR COMMENTS	JUL 2011	

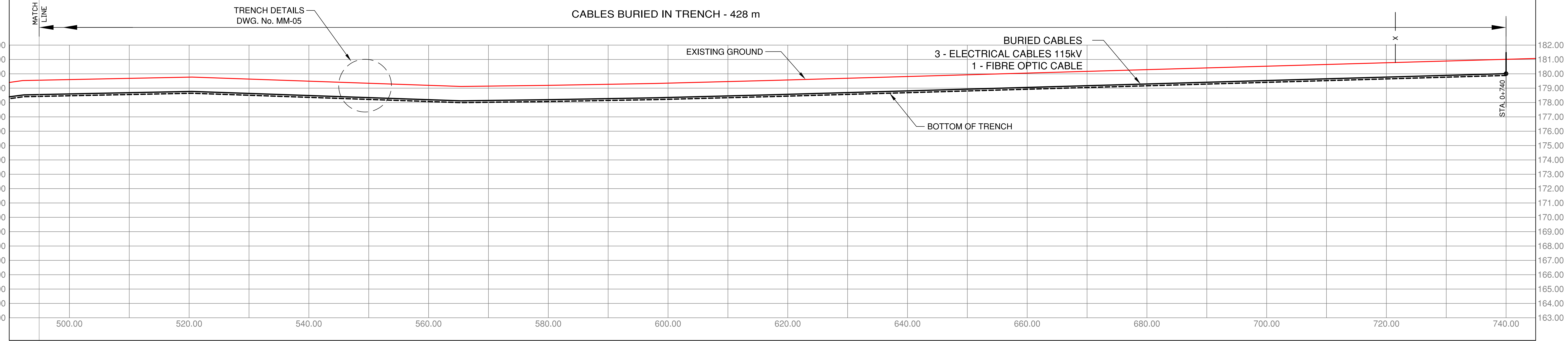
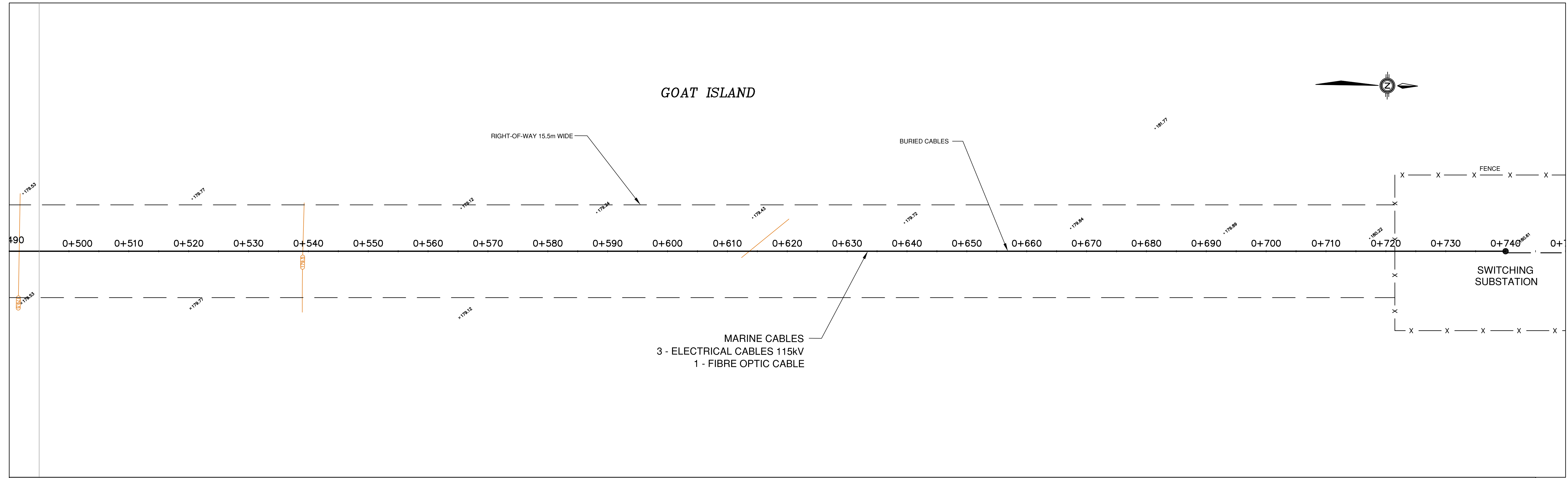
**McLEAN'S MOUNTAIN WIND FARM
 MARINE CABLE CROSSING**

PLAN AND PROFILE
 STA. 0+250 TO STA. 0+500

NORTHLAND POWER INC.

SCALE HOR. **1:300** VERT. **1:125** DRAWING No. **MM-03**
 DESIGN **C.B.F.** DRAWN **P.J.P.** REV. No.
 REVIEWED **C.B.F.** DATE **JULY 2011**

GOAT ISLAND



STATION	GROUND ELEVATION	CABLES INVERT	BOTTOM OF TRENCH (approximate)
0+500	179.6	178.6	178.5
0+510	179.7	178.7	178.6
0+520	179.8	178.8	178.7
0+530	179.6	178.6	178.5
0+540	179.5	178.5	178.4
0+550	179.7	178.7	178.6
0+560	179.2	178.2	178.1
0+570	179.1	178.1	178.0
0+580	179.2	178.2	178.1
0+590	179.3	178.3	178.2
0+600	179.4	178.4	178.3
0+610	179.5	178.5	178.4
0+620	179.6	178.6	178.5
0+630	179.7	178.7	178.6
0+640	179.8	178.8	178.7
0+650	179.9	178.9	178.8
0+660	180.1	179.1	179.0
0+670	180.2	179.2	179.1
0+680	180.3	179.3	179.2
0+690	180.4	179.4	179.3
0+700	180.5	179.5	179.4
0+710	180.7	179.7	179.6
0+720	180.8	179.8	179.7
0+730	180.9	179.9	179.8
0+740	181.0	180.0	179.9

GENERAL NOTES

THIS DOCUMENT HAS BEEN PREPARED BASED IN PART UPON INFORMATION FURNISHED BY OTHERS. CONSULTANT CANNOT ASSURE THE ACCURACY OF INFORMATION BY OTHERS AND THUS IS NOT RESPONSIBLE FOR THE ACCURACY OF THIS DOCUMENT, OR FOR ANY ERROR OR OMISSION THAT MAY HAVE BEEN INCORPORATED INTO IT AS A RESULT. THOSE RELYING ON THIS DOCUMENT ARE ADVISED TO OBTAIN INDEPENDENT VERIFICATION OF ITS ACCURACY BEFORE APPLYING IT FOR ANY PURPOSE.

DRAFT

CONSULTANT:
WHITE H.B. WHITE CANADA CORP.

MARINE CONSULTANT:
C.B. FAIRN & ASSOCIATES LTD.

NO.	REVISIONS	DATE	APPROVED
1	ISSUED FOR PERMIT	MAR 2010	
2	ISSUED FOR COMMENTS	JUL 2011	

**McLEAN'S MOUNTAIN WIND FARM
MARINE CABLE CROSSING**

PLAN AND PROFILE
STA. 0+250 TO STA. 0+500

NORTHLAND POWER INC.

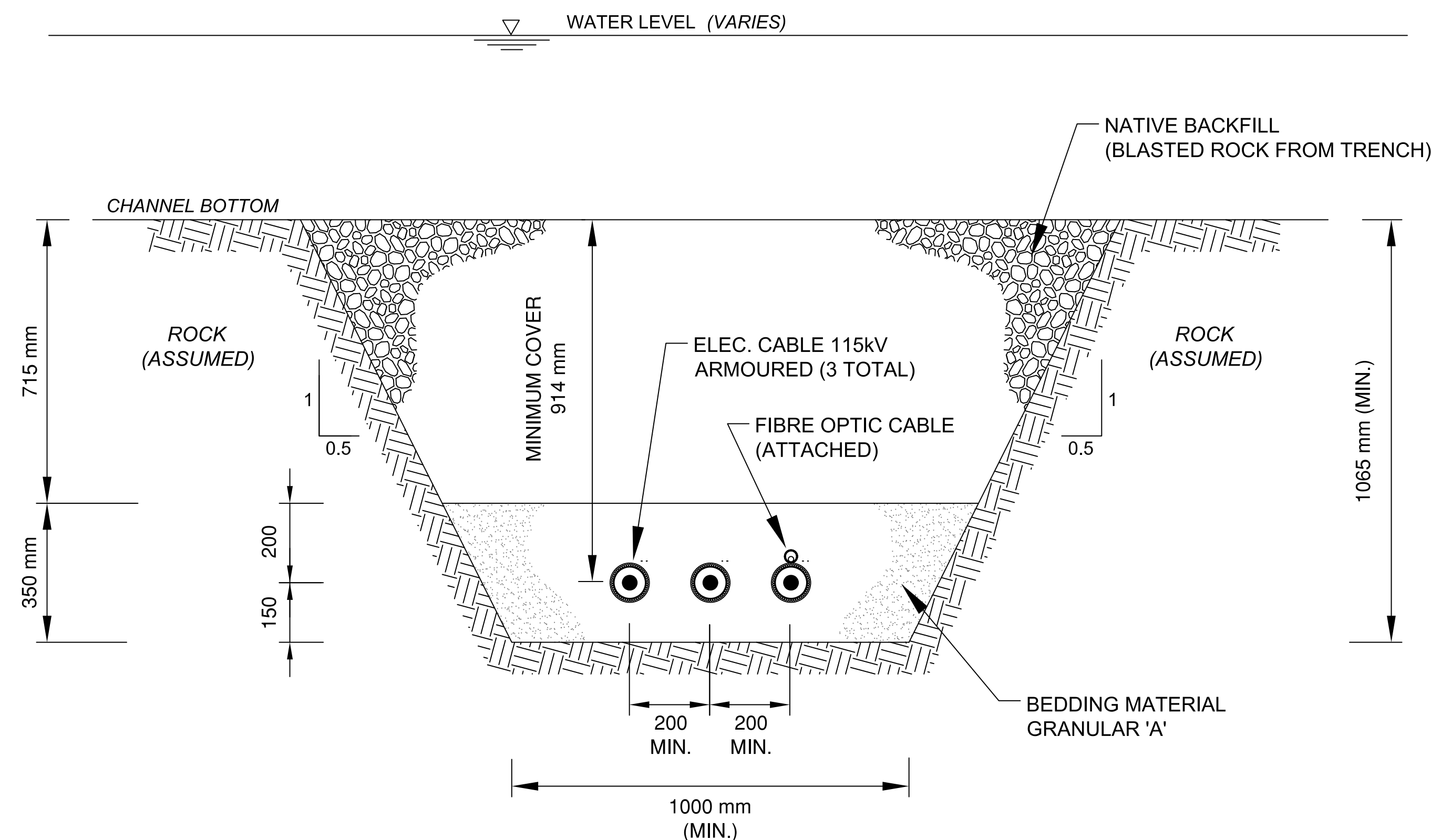
SCALE HOR. 1:300 VERT. 1:125

DESIGN C.B.F. DRAWN P.J.P.

REVIEWED C.B.F. DATE JULY 2011

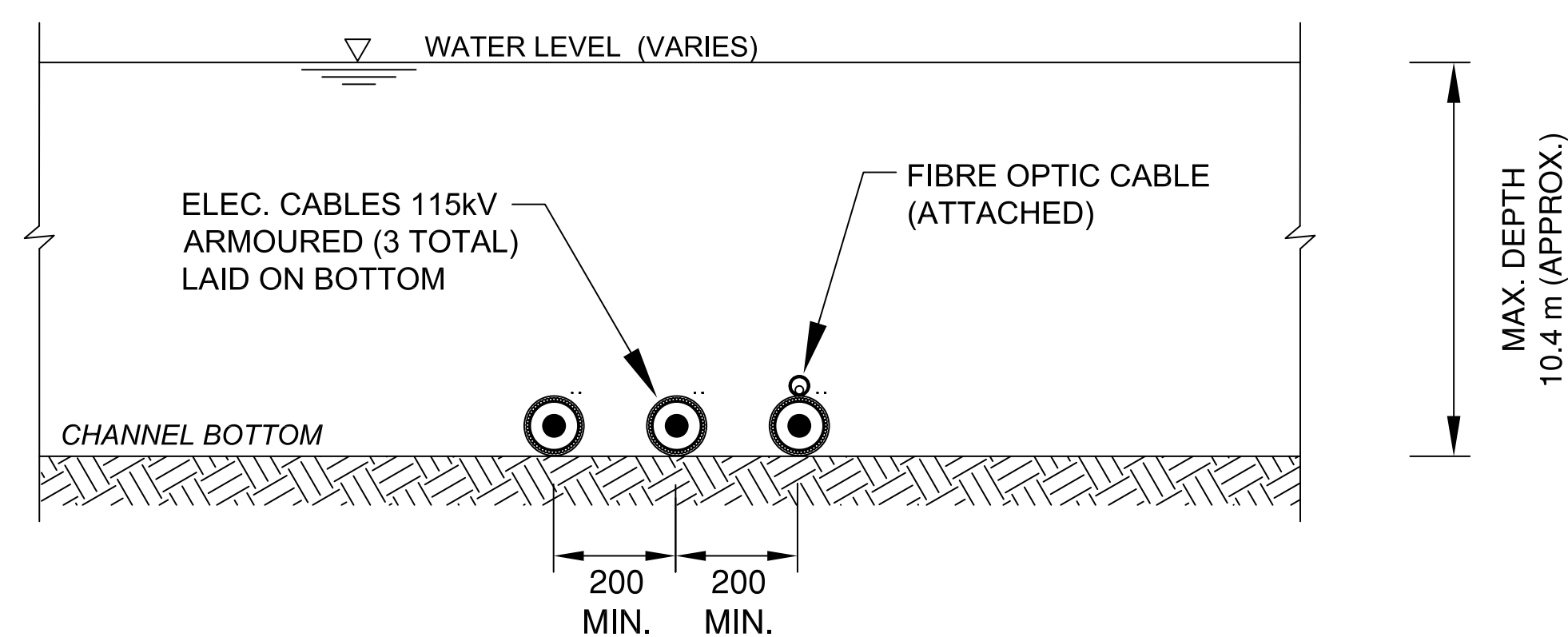
DRAWING No. **MM-04**

REV. No.



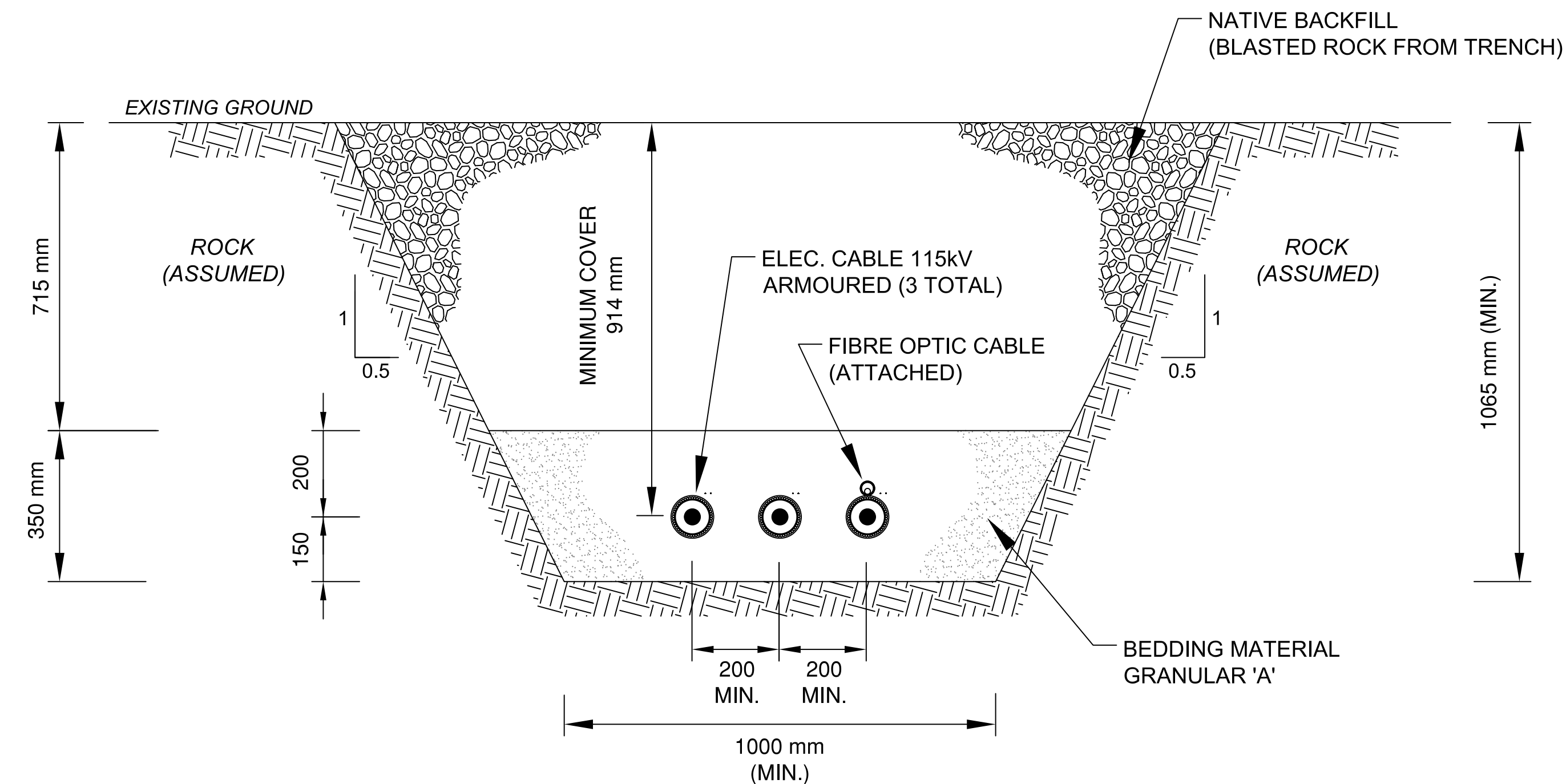
TYPICAL SECTION - MARINE TRENCH

STA. 0+000 TO STA. 0+032
 STA. 0+323 TO STA. 0+490±
 N.T.S.



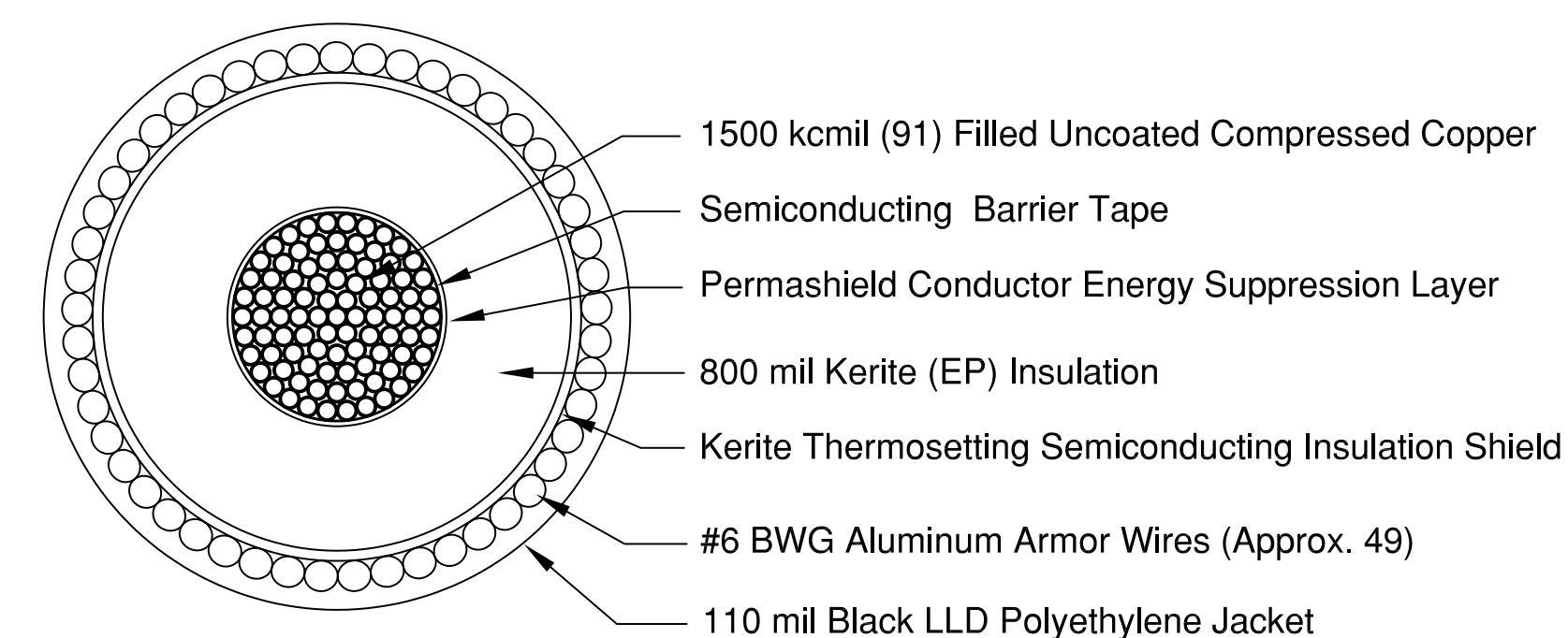
TYPICAL SECTION - CABLES ON LAKE BOTTOM

STA. 0+032 TO STA. 0+323
 N.T.S.



TYPICAL SECTION - ON-SHORE TRENCH

STA. 0+490± TO STA. 0+740
 N.T.S.



WEIGHT IN AIR (APPROX.) = 11.025 lbs/ft
 WEIGHT IN WATER (APPROX.) = 5.87 lbs/ft

ELEC. CABLE 115 kV - DETAILS (TYP.)

KERITE CATALOG No. 195G95-J8100 OR EQUIVALENT

Component	Description	Diameter	
Conductor	1500 kcmil (91) Copper	1.38"	35.1 mm
Barrier Tape	Semiconducting Fabric Tape	1.39"	35.3 mm
Permashield	Energy Suppression Layer	1.45"	36.8 mm
Insulation	Kerite EP (800 mil)	3.10"	78.7 mm
Semicon	Kerite Thermoset Shield	3.24"	82.3 mm
Wire Shield	#6 BWG AL Wires. (49)	3.65"	92.7 mm
Jacket	Black Polyethylene (110 mil)	3.89"	98.8 mm

GENERAL NOTES
 THIS DOCUMENT HAS BEEN PREPARED BASED IN PART UPON INFORMATION FURNISHED BY OTHERS. CONSULTANT CANNOT ASSURE THE ACCURACY OF INFORMATION BY OTHERS AND THIS IS NOT RESPONSIBLE FOR THE ACCURACY OF THIS DOCUMENT, OR FOR ANY ERROR OR OMISSION THAT MAY HAVE BEEN INCORPORATED INTO IT AS A RESULT. THOSE RELYING ON THIS DOCUMENT ARE ADVISED TO OBTAIN INDEPENDENT VERIFICATION OF ITS ACCURACY BEFORE APPLYING IT FOR ANY PURPOSE.

DRAFT

CONSULTANT:

H.B. WHITE CANADA CORP.
 MARINE CONSULTANT:

C.B. FAIRN & ASSOCIATES LTD.

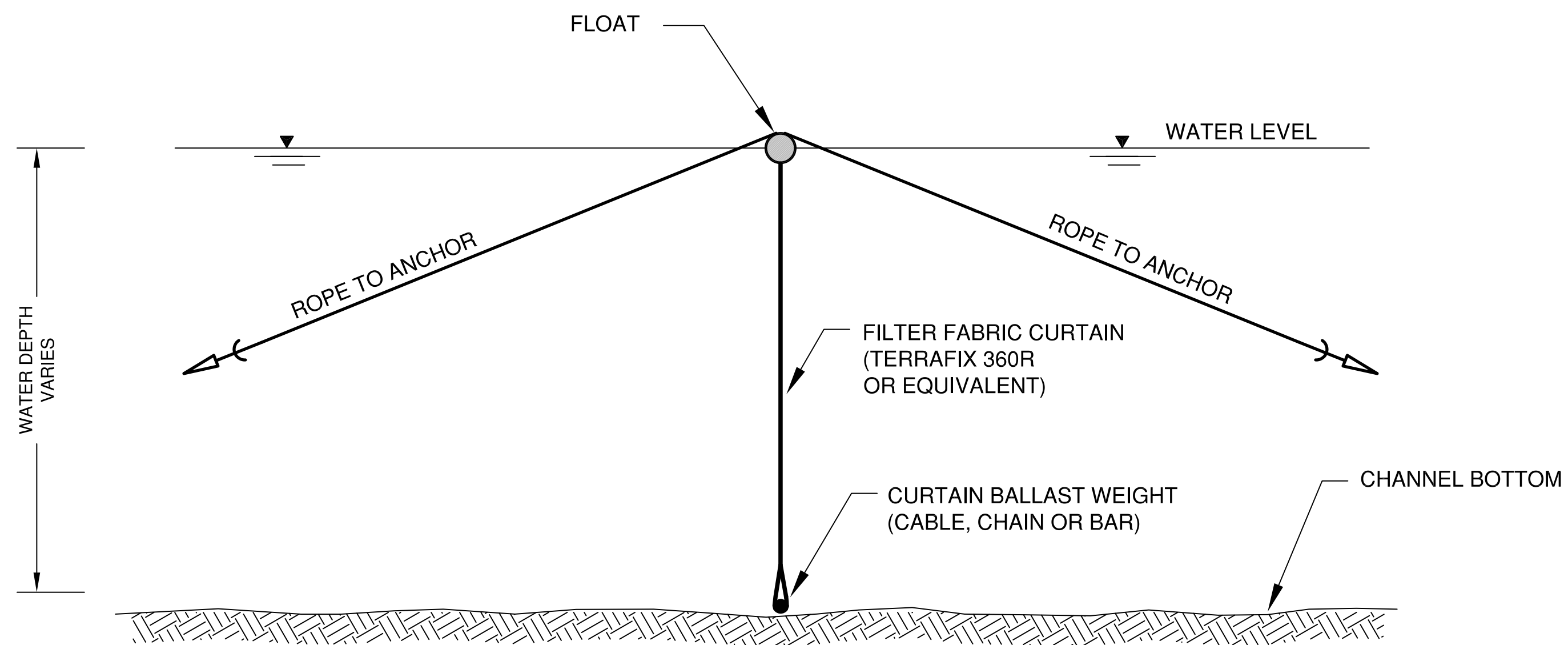
NO.	REVISIONS	DATE	APPROVED
	ISSUED FOR PERMIT	MAR 2010	
	ISSUED FOR COMMENTS	JUL 2011	

**McLEAN'S MOUNTAIN WIND FARM
 MARINE CABLE CROSSING**

TYPICAL SECTIONS &
 CABLE DETAILS

NORTHLAND POWER INC.

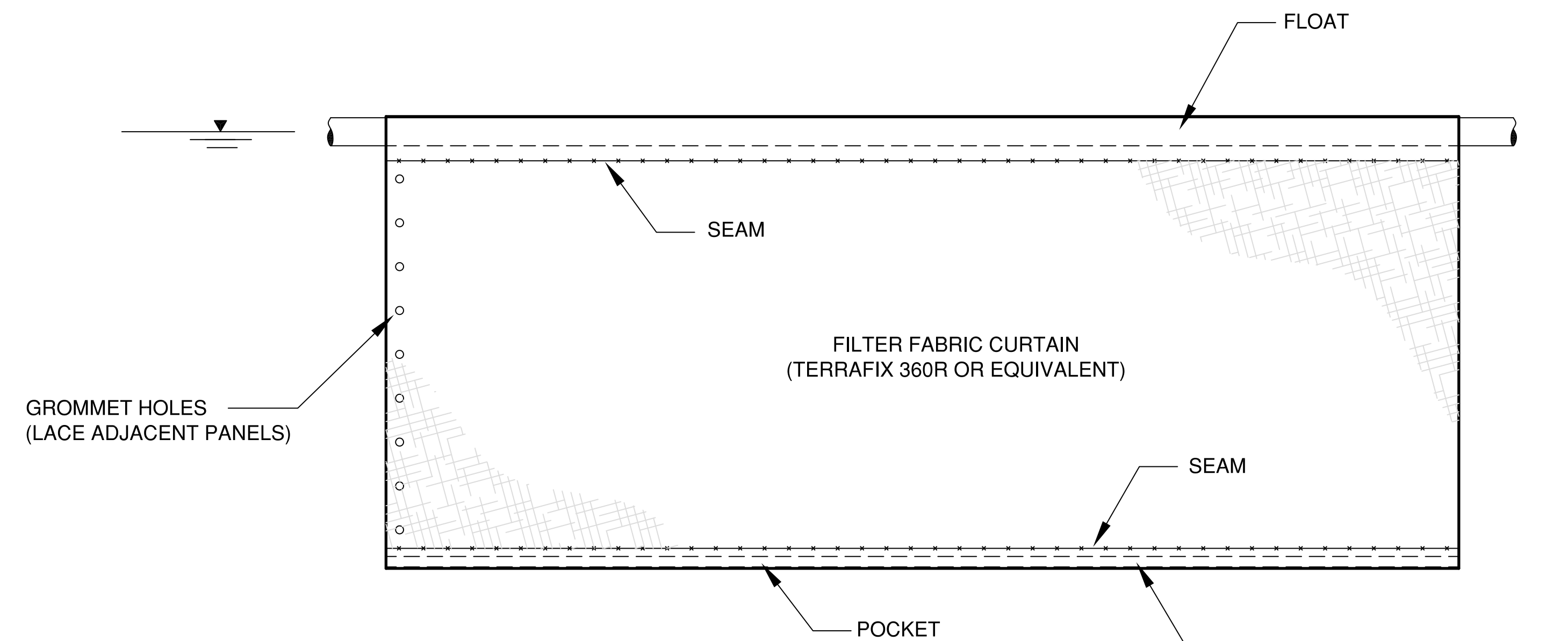
SCALE HOR.	VERT.	DRAWING No.
DESIGN C.B.F.	DRAWN P.J.P.	MM-05
REVIEWED C.B.F.	DATE JULY 2011	REV. No.



NOTE: TURBIDITY CURTAIN TO BE ADJUSTABLE TO SUIT WATER DEPTHS.

SECTION - TURBIDITY CURTAIN (TYP.)

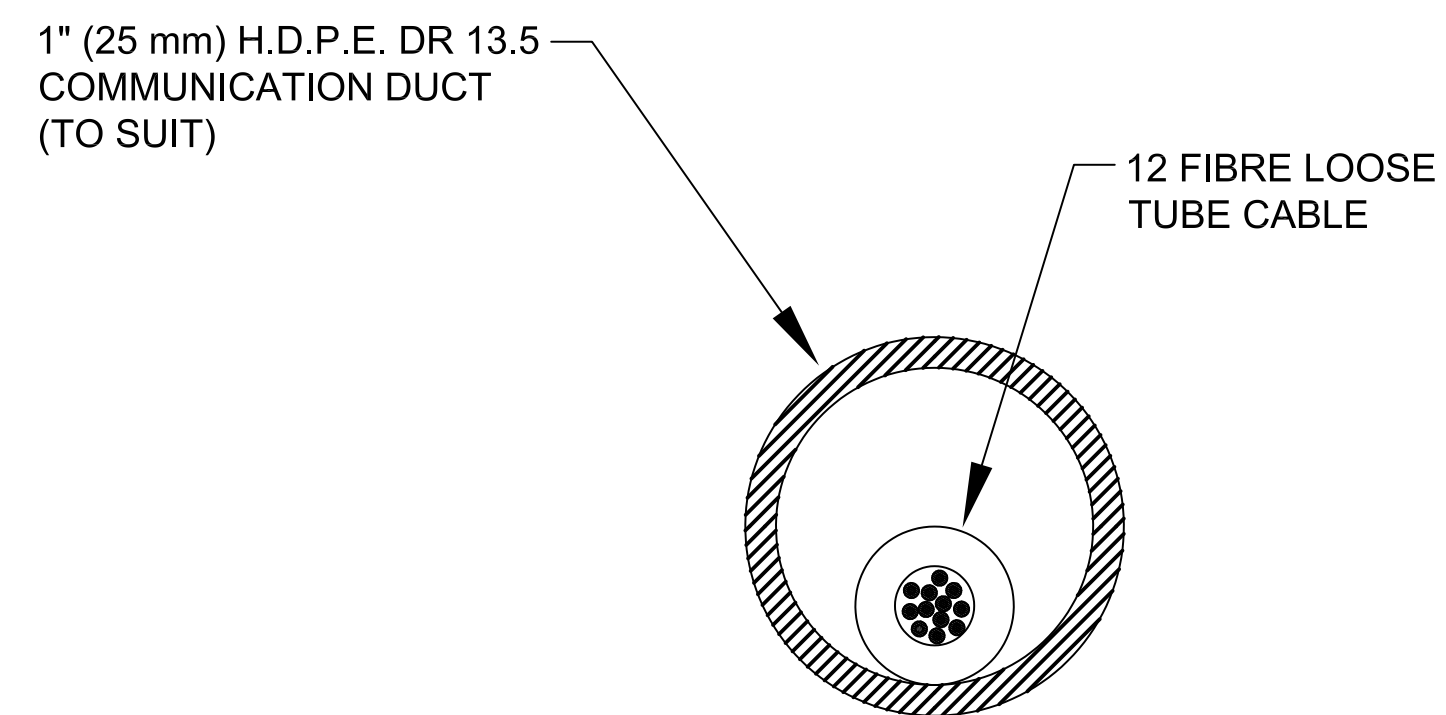
N.T.S.



NOTE: MINIMUM OVERLAP 100 mm FOR CONNECTING CURTAIN SECTIONS.

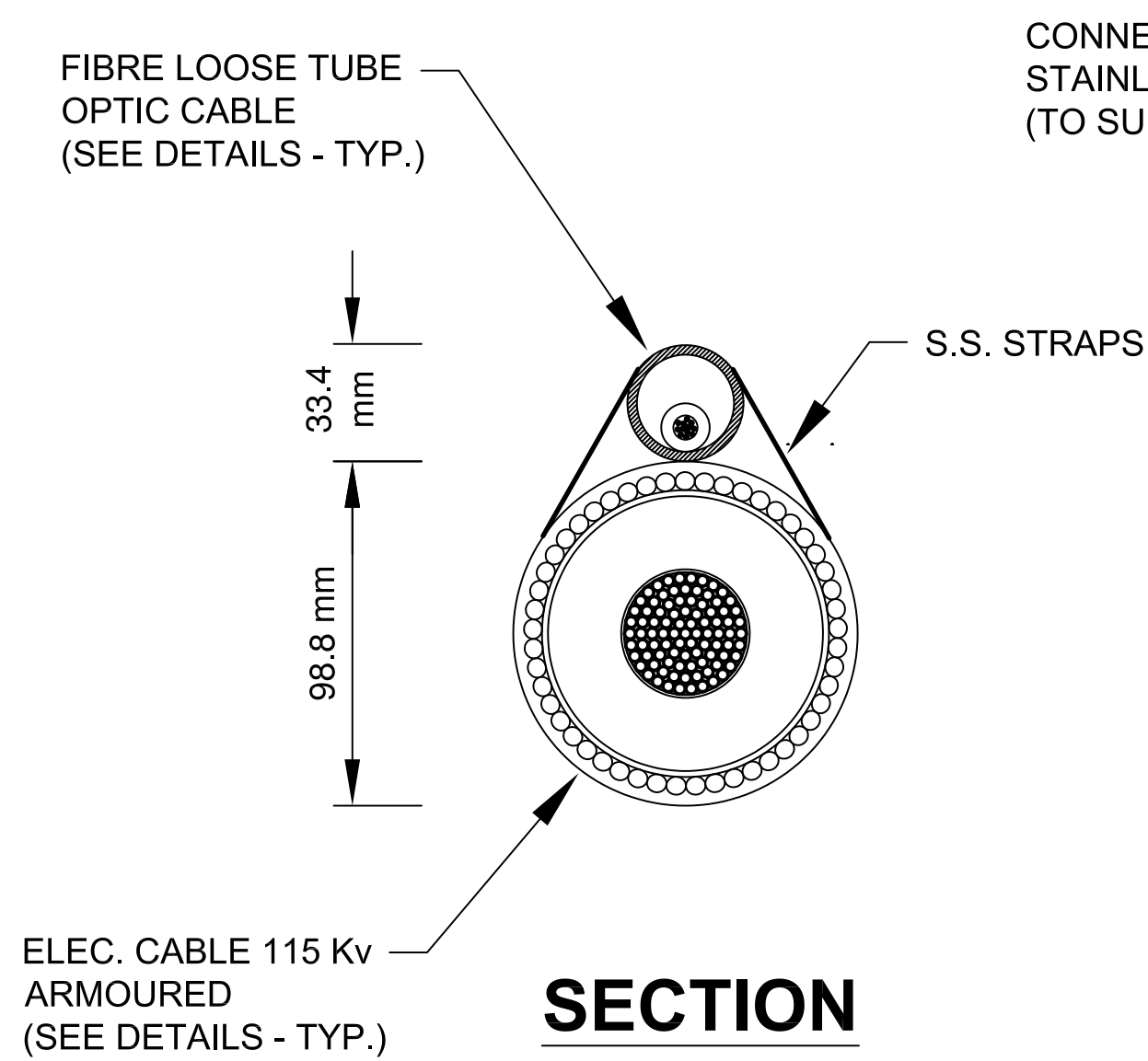
ELEVATION - TURBIDITY CURTAIN (TYP.)

N.T.S.

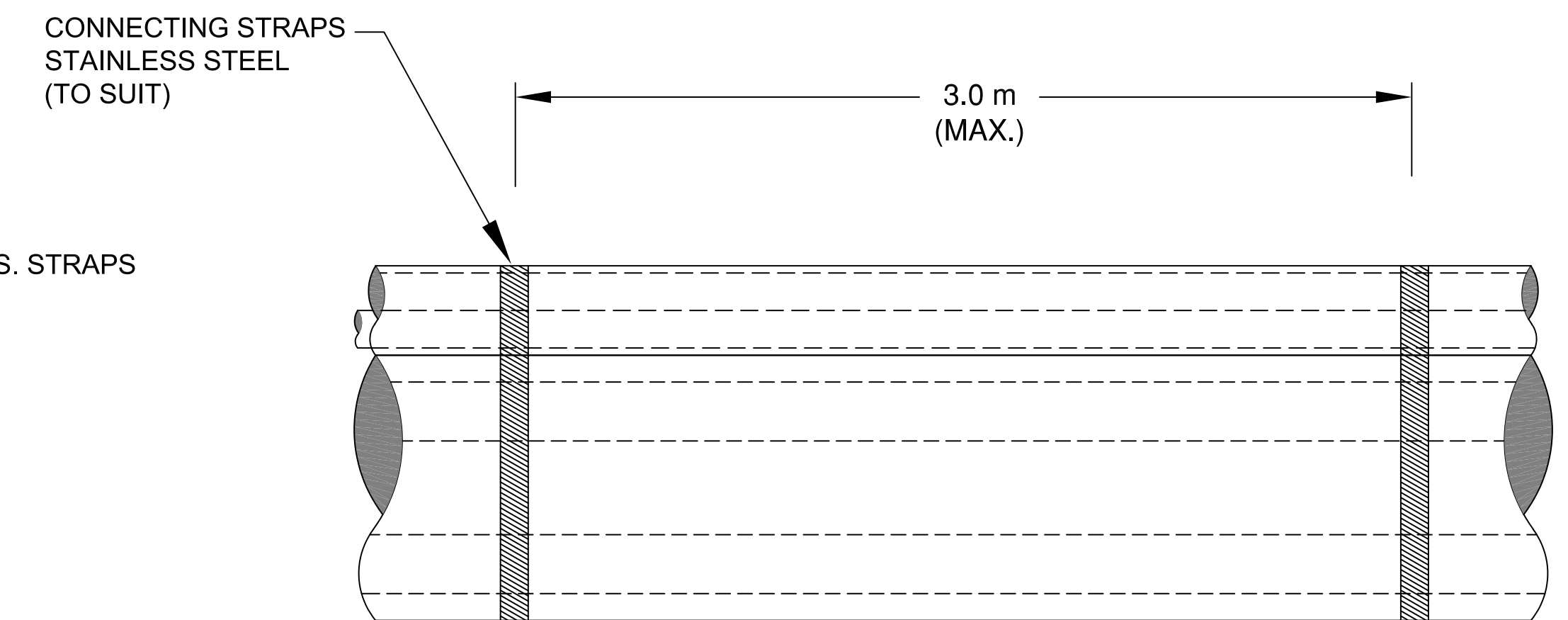


FIBRE OPTIC CABLE - DETAILS (TYP.)

N.T.S.



SECTION



ELEVATION

ELECTRICAL CABLE WITH FIBRE OPTIC CABLE

N.T.S.

GENERAL NOTES

THIS DOCUMENT HAS BEEN PREPARED BASED IN PART UPON INFORMATION FURNISHED BY OTHERS. CONSULTANT CANNOT ASSURE THE ACCURACY OF INFORMATION BY OTHERS AND THIS IS NOT RESPONSIBLE FOR THE ACCURACY OF THIS DOCUMENT, OR FOR ANY ERROR OR OMISSION THAT MAY HAVE BEEN INCORPORATED INTO IT AS A RESULT. THOSE RELYING ON THIS DOCUMENT ARE ADVISED TO OBTAIN INDEPENDENT VERIFICATION OF ITS ACCURACY BEFORE APPLYING IT FOR ANY PURPOSE.

DRAFT

CONSULTANT:



MARINE CONSULTANT:



NO.	REVISIONS	DATE	APPROVED
	ISSUED FOR PERMIT	MAR 2010	
	ISSUED FOR COMMENTS	JUL 2011	

McLEAN'S MOUNTAIN WIND FARM
MARINE CABLE CROSSING

CABLE DETAILS &
TURBIDITY CURTAINS



**NORTHLAND
POWER INC.**

SCALE HOR.	VERT.	DRAWING No.
DESIGN	C.B.F.	DRAWN P.J.P.
REVIEWED	C.B.F.	DATE JULY 2011
		REV. No.
		MM-06